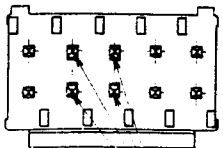
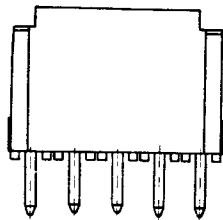
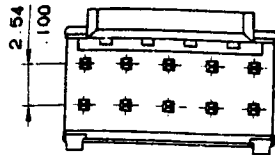
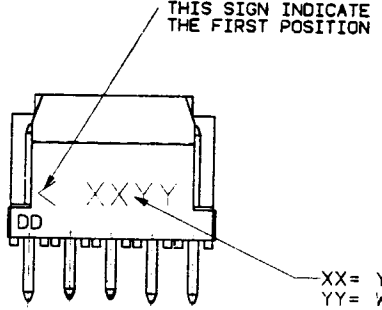
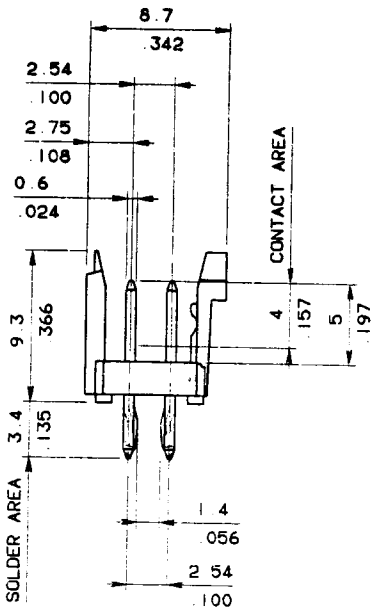


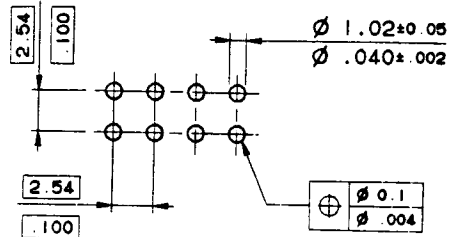
PRODUCT NUMBER	SIZE
89809-305	2x5



PINS WITH KINKED LEGS



XX= YEAR CODE
YY= WEEK NUMBER



RECOMMENDED HOLE PATTERN

- NOTES :
- 1 - MATERIAL BODY THERMOPLASTIC POLYESTER 30% GLASSFILLED COLOUR BLUE, FLAME RETARDANT PER UL-94 VO.
 - MATERIAL PIN PHOSPHOR BRONZE 3/4 HARD.
 - 2 - MIN. PUSH-OUT FORCE TERMINAL IN BOTH DIRECTIONS: 22 NEWTONS.

89809-305 0.75 μm Au MIN OVER 1.3 μm Ni MIN Snpb OVER Ni
 300 μm CONTACT AREA PLATING EXPLANATION SOLDER TAIL

CUSTOMER COPY FOR REFERENCE ONLY

Surface ISO 1302	Tolerances ISO 406 ISO 1101	Scale 5:1	Material code SEE NOTE 1
Product number 89809-305		Title DX HEADER WITH SPECIAL LATCHING	
Date Dr 90 11 29 J L CORDIER Chr 90 11 29 M RENAUD Appd 90 11 29 J N P Z		Drawing number 89809	
 DU PONT ELECTRONICS		Rev 1th Sheet 213 1 of 1 Release N° F 00729 FORMAT A2	