

Tous droits strictement reserves. Reproduction ou communication a des tiers interdite sous quelque forme que ce soit sans autorisation ecrite du proprietaire. Propriete de c. FCI. Droits de reproduction FCI.

All rights strictly reserved. Reproduction or issue to third parties in any form whatever is not permitted without written authority from the proprietor. Property of FCI. Copyright FCI.

PRODUCT NO.	MOUNTING STYLE	COLOR	SOLDER-TAIL STYLE	BOARD LOCATOR	STAND-OFF	MOUNTING SUPPORT	PAGE	APPLICATION DRAWING
92856-000/000LF	TOP-MOUNT	BLACK	THRU-HOLE, R/A	NO	NO	NO	2	REFER TO TA-946 FOR BOARD LAYOUT
92856-040/040LF					2 mm	2 mm	4	
92856-010/040LF					4 mm	4 mm	16	
92856-020/020LF					5 mm	5 mm	6	
92856-080/080LF					2 mm	NO	14	
92856-090/090LF					5 mm		15	
92856-001/001LF					SMT, STAGGERED (DOUBLE-ROW)	YES	8	
92856-002/002LF					SMT, IN-LINE (SINGLE-ROW)		10	
92856-003/003LF					THRU-HOLE, R/A		12	
92856-500/500LF	BOTTOM-MOUNT	NATURAL	THRU-HOLE, R/A	NO	NO	NO	3	
92856-540/540LF					2 mm	2 mm	5	
92856-510/510LF					4 mm	4 mm	17	
92856-520/520LF					5 mm	5 mm	7	
92856-501/501LF					SMT, STAGGERED (DOUBLE-ROW)	YES	9	
92856-502/502LF					SMT, IN-LINE (SINGLE-ROW)		11	
92856-503/503LF					THRU-HOLE, R/A		13	

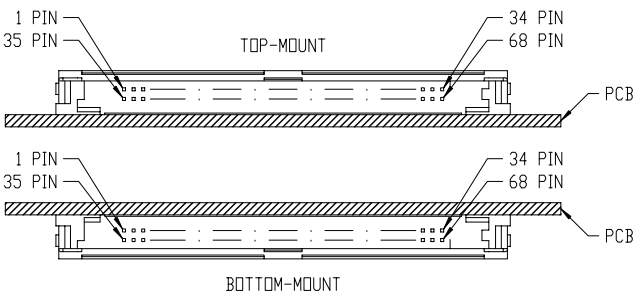


FIG. A MOUNTING STYLE

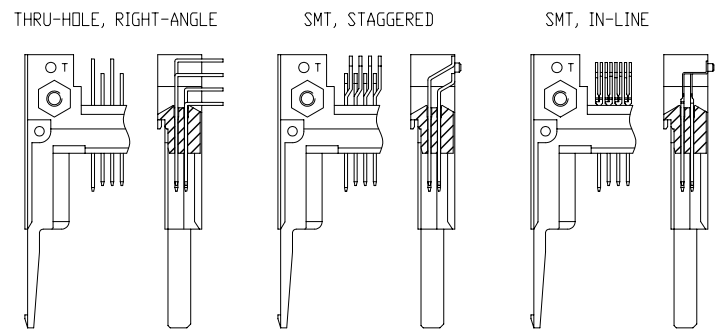
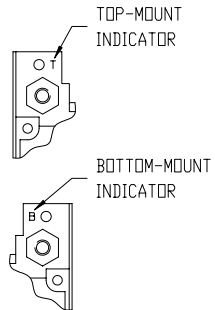


FIG. B SOLDER-TAIL STYLE

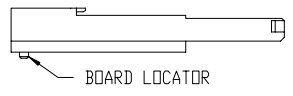


FIG. C BOARD LOCATOR

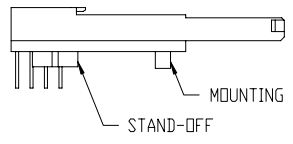


FIG. D STAND-OFF & MOUNTING SUPPORT

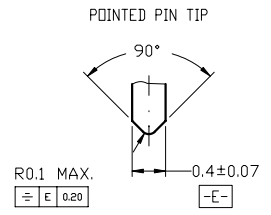
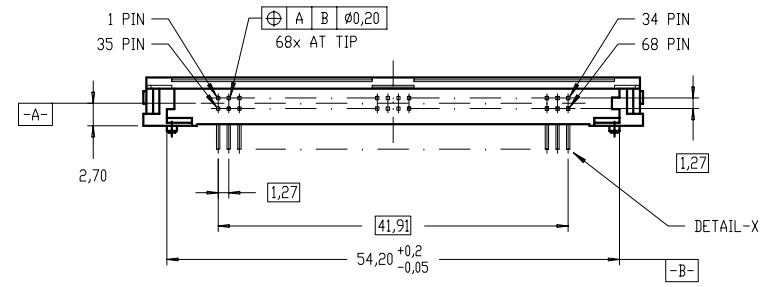
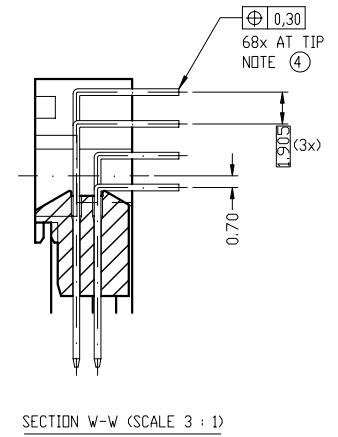
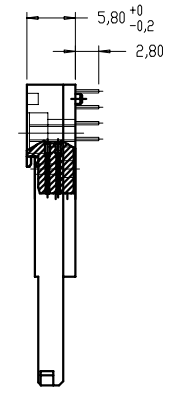
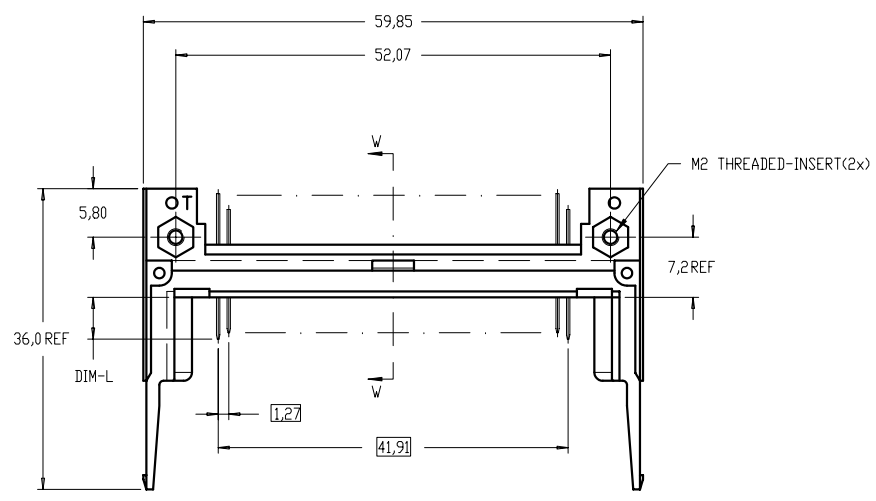
mat'l. code				tolerances unless otherwise specified				CUSTOMER COPY			 www.fciconnect.com								
ltr	ecn no	dr	date	linear	±.3			projection	title 68P EJECTOR HEADER ASSEMBLY FOR PCMCIA/JEIDA TYPE-I/II/III HEADER ASSEMBLY										
E	N04-0105	WB	11/26/04	angles	0° ±2°				product family PCMCIA code NT										
				dr	WB JIANG	11/26/04		← MM →	size dwg no										
				enrg	WB JIANG	11/26/04		scale	A 92856 sheet 1 of 17										
				chr	WB JIANG	11/26/04		N.T.S.											
				appd	JASON ZHOU	11/26/04													
sheet index	revision sheet	E	E	E	E	E	E	E	E	E	E	E	E	E	E	E	E	E	E
		1	2	3	4	5	6	7	8	9	10	11	12	13	14	15	16	17	

Tous droits strictement reserves. Reproduction ou communication a des tiers interdite sous quelque forme que ce soit sans autorisation ecrite du proprietaire. Propriete de c FCI. Droits de reproduction FCI.

FCI

All rights strictly reserved. Reproduction or issue to third parties in any form whatever is not permitted without written authority from the proprietor. Property of FCI. Copyright FCI.

PRODUCT NO.	MOUNTING STYLE	COLOR	SOLDER-TAIL STYLE	STAND-OFF	MOUNTING SUPPORT	BOARD LOCATOR
92856-000/000LF	TOP-MOUNT	BLACK	THRU-HOLE, R/A	NO	NO	NO



NOTES :

- SEE TA-946 FOR PCB LAYOUT.
- MATERIAL :
PLASTIC : LCP UL94V-0
PIN : PHOSPHOR BRONZE
- FINISH (PIN) :
UNDER-PLATING : 0.5 um MIN. Ni
CONTACT AREA : 0.1 um Au OVER 0.5 um MIN. Pd-Ni
SOLDER AREA : 2.5um MIN. Sn-Pb
- TRUE POSITION IS A FREE GRID TO THE PIN PATTERN ITSELF.
- IF LEAD FREE P/N THE HOUSING WILL WITHSTAND EXPOSURE TO 260°C PEAK TEMPERATURE FOR 10 SECONDS IN A WAVE SOLDER APPLICATION WITH A 1.00MM MINIMUM THICK CIRCUIT BOARD.
- LEAD FREE PRODUCT MEETS EUROPEAN UNION DIRECTIVES AND OTHER COUNTRY REGULATIONS AS DISCRIBLED IN GS-22-008
- IF LEAD FREE P/N. PACKAGING MEETS GS-14-920 SPECIFICATION

PIN NO.	36 , 67	1 , 17 , 34 35 , 51 , 68	OTHERS
DIM-L	3,50 ± 0,10	5,00 ± 0,10	4,25 ± 0,10

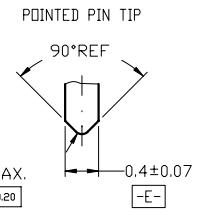
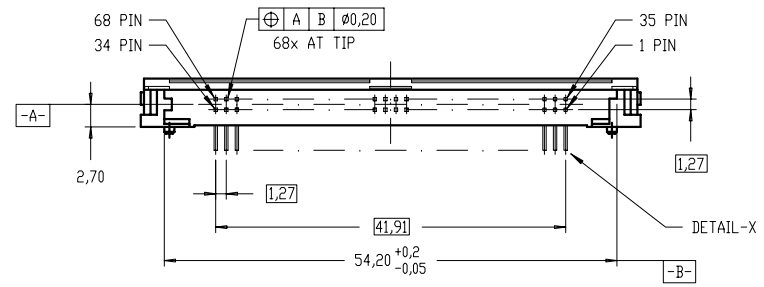
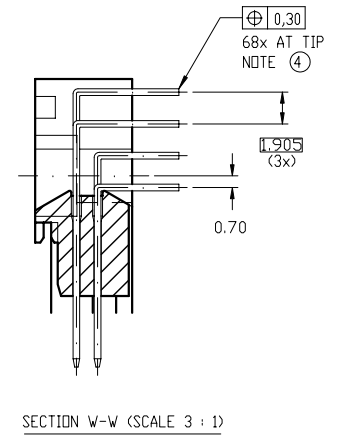
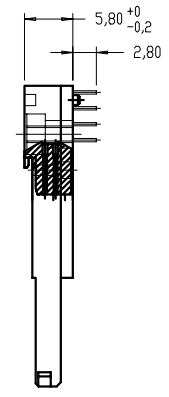
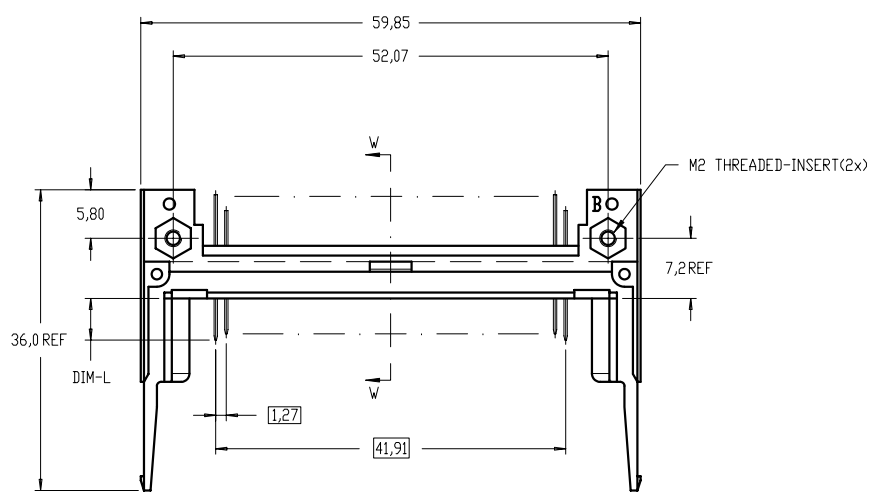
mat'l. code				tolerances unless otherwise specified		CUSTOMER COPY		 www.fciconnect.com	
ltr	ecn no	dr	date	linear	±.3	projection	title 68P EJECTOR HEADER ASSEMBLY FOR PCMCIA/JEIDA TYPE-I/II/III HEADER ASSEMBLY		
E				angles	0° ±2°	 MM	product family	PCMCIA	code
				dr	WB JIANG 11/26/04	scale	size		NT
				engr	WB JIANG 11/26/04	N.T.S.	92856		sheet
				chr	WB JIANG 11/26/04	A			2 of
				appd	JASON ZHOU 11/26/04				
sheet index	revision sheet								

Tous droits strictement reserves. Reproduction ou communication a des tiers interdite sous quelque forme que ce soit sans autorisation ecrite du proprietaire. Propriete de c FCI. Droits de reproduction FCI.

FCI

All rights strictly reserved. Reproduction or issue to third parties in any form whatever is not permitted without written authority from the proprietor. Property of FCI. Copyright FCI.

PRODUCT NO.	MOUNTING STYLE	COLOR	SOLDER-TAIL STYLE	STAND-OFF	MOUNTING SUPPRT	BOARD LOCATOR
92856-500/500LF	BOTTOM-MOUNT	NATURAL	THRU-HOLE, R/A	NO	NO	NO



NOTES :

- SEE TA-946 FOR PCB LAYOUT.
- MATERIAL :
PLASTIC : LCP UL94V-0
PIN : PHOSPHOR BRONZE
- FINISH (PIN) :
UNDER-PLATING : 0.5 um MIN. NI
CONTACT AREA : 0.1 um Au OVER 0.5 um MIN. Pd-Ni
SOLDER AREA (TIN LEAD OPTION): 2.5um MIN. Sn-Pb
SOLDER AREA (LEAD FREE OPTION): 2.5um MIN. PURE TIN
- TRUE POSITION IS A FREE GRID TO THE PIN PATTERN ITSELF.
- IF LEAD FREE P/N. THE HOUSING WILL WITHSTAND EXPOSURE TO 260°C PEAK TEMPERATURE FOR 10 SECONDS IN A WAVE SOLDER APPLICATION WITH A 1.00MM MINIMUM THICK CIRCUIT BOARD.
- LEAD FREE PRODUCT MEETS EUROPEAN UNION DIRECTIVES AND OTHER COUNTRY REGULATIONS AS DISCRIBLED IN GS-22-008
- IF LEAD FREE P/N. PACKAGING MEETS GS-14-920 SPECIFICATION

PIN NO.	36 , 67	1 , 17 , 34 35 , 51 , 68	OTHERS
DIM-L	3,50 ± 0,10	5,00 ± 0,10	4,25 ± 0,10

mat'l. code				tolerances unless otherwise specified		CUSTOMER COPY		 www.fciconnect.com	
ltr	ecn no	dr	date	linear	±.3	projection	title 68P EJECTOR HEADER ASSEMBLY FOR PCMCIA/JEIDA TYPE-I/II/III HEADER ASSEMBLY		
E				angles	0° ±2°	 MM	product family	PCMCIA	code
				dr	WB JIANG 11/26/04	 N.T.S.	size	dwg no	NT
				enrg	WB JIANG 11/26/04	A	92856		sheet
				chr	WB JIANG 11/26/04				3 of
				appd	JASON ZHOU 11/26/04				
sheet index	revision sheet								

A

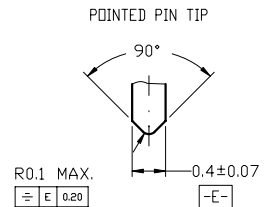
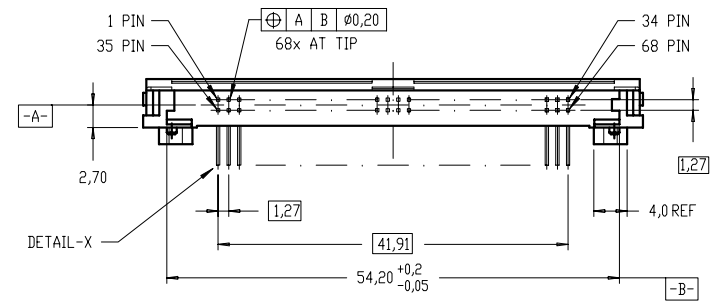
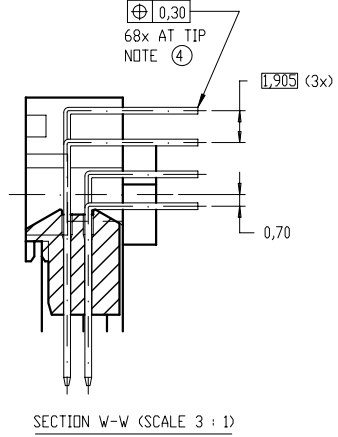
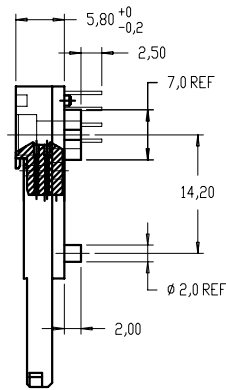
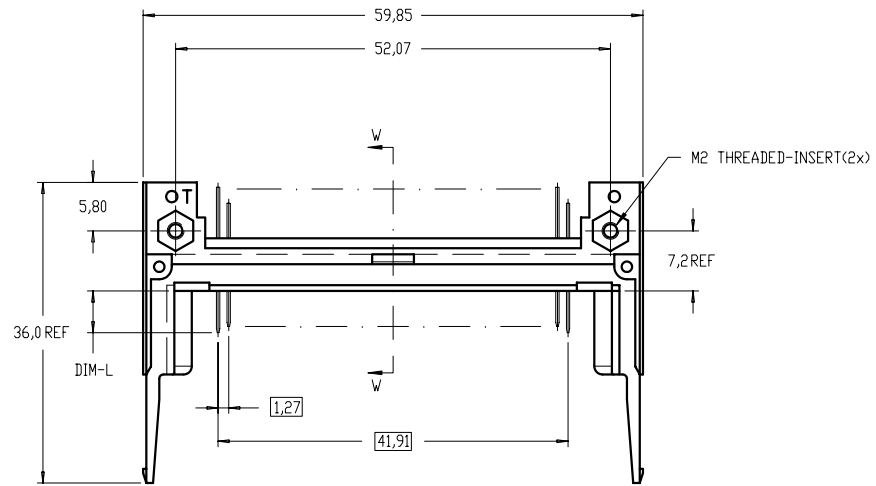
B

Tous droits strictement reserves. Reproduction ou communication a des tiers interdite sous quelque forme que ce soit sans autorisation ecrite du proprietaire. Propriete de c FCI. Droits de reproduction FCI.

FCI

All rights strictly reserved. Reproduction or issue to third parties in any form whatever is not permitted without written authority from the proprietor. Property of FCI. Copyright FCI.

PRODUCT NO.	MOUNTING STYLE	COLOR	SOLDER-TAIL STYLE	STAND-OFF	MOUNTING SUPPRT	BOARD LOCATOR
92856-040/040LF	TOP-MOUNT	BLACK	THRU-HOLE, R/A	2 mm	2 mm	NO



DETAIL-X (SCALE 15 : 1)

NOTES :

- SEE TA-946 FOR PCB LAYOUT.
- MATERIAL :
PLASTIC : LCP UL94V-0
PIN : PHOSPHOR BRONZE
- FINISH (PIN) :
UNDER-PLATING : 0.5 um MIN. Ni
CONTACT AREA : 0.1 um Au OVER 0.5 um MIN. Pd-Ni
SOLDER AREA (TIN LEAD OPTION): 2.5um MIN. Sn-Pb
SOLDER AREA (LEAD FREE OPTION): 2.5um MIN. PURE TIN
- TRUE POSITION IS A FREE GRID TO THE PIN PATTERN ITSELF.
- IF LEAD FREE P/N. THE HOUSING WILL WITHSTAND EXPOSURE TO 260°C PEAK TEMPERATURE FOR 10 SECONDS IN A WAVE SOLDER APPLICATION WITH A 1.00MM MINIMUM THICK CIRCUIT BOARD.
- LEAD FREE PRODUCT MEETS EUROPEAN UNION DIRECTIVES AND OTHER COUNTRY REGULATIONS AS DISCRIBLED IN GS-22-008
- IF LEAD FREE P/N. PACKAGING MEETS GS-14-920 SPECIFICATION

PIN NO.	36 , 67	1 , 17 , 34 35 , 51 , 68	OTHERS
DIM-L	3,50 ± 0,10	5,00 ± 0,10	4,25 ± 0,10

mat'l. code		tolerances unless otherwise specified		CUSTOMER COPY	 www.fciconnect.com
ltr	ecn no	dr	date	linear	
E				angles	
				dr	MM
				enrg	← MM →
				chr	scale
				appd	N.T.S.
sheet index	revision sheet				A

title	68P EJECTOR HEADER ASSEMBLY FOR PCMCIA/JEIDA TYPE-I/II/III HEADER ASSEMBLY	
product family	PCMCIA	code
size	dwg no	NT
	92856	sheet 4 of

A

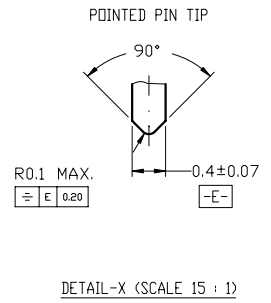
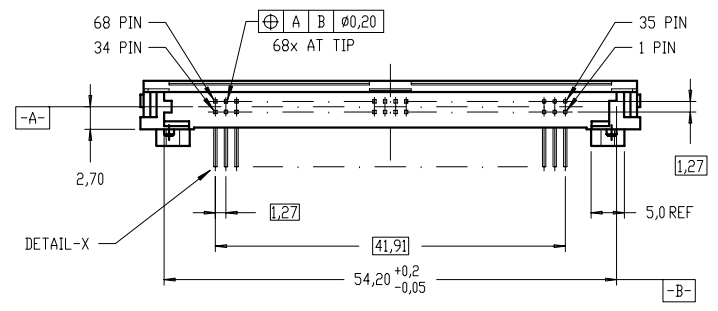
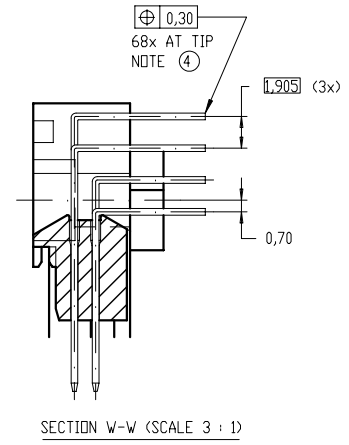
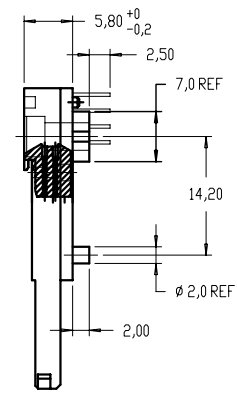
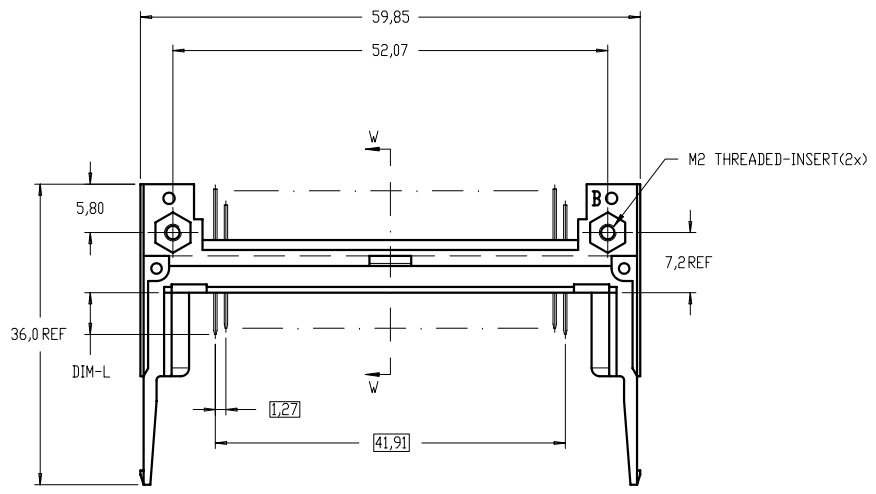
B

Tous droits strictement reserves. Reproduction ou communication a des tiers interdite sous quelque forme que ce soit sans autorisation ecrite du proprietaire. Propriete de c. FCI. Droits de reproduction FCI.

FCI

All rights strictly reserved. Reproduction or issue to third parties in any form whatever is not permitted without written authority from the proprietor. Property of FCI. Copyright FCI.

PRODUCT NO.	MOUNTING STYLE	COLOR	SOLDER-TAIL STYLE	STAND-OFF	MOUNTING SUPPRT	BOARD LOCATOR
92856-540/540LF	BOTTOM-MOUNT	NATURAL	THRU-HOLE, R/A	2 mm	2 mm	NO



NOTES :

- SEE TA-946 FOR PCB LAYOUT.
- MATERIAL :
PLASTIC : LCP UL94V-0
PIN : PHOSPHOR BRONZE
- FINISH (PIN) :
UNDER-PLATING : 0.5 um MIN. NI
CONTACT AREA : 0.1 um Au OVER 0.5 um MIN. Pd-Ni
SOLDER AREA (TIN LEAD OPTION): 2.5um MIN. Sn-Pb
SOLDER AREA (LEAD FREE OPTION): 2.5um MIN. PURE TIN
- TRUE POSITION IS A FREE GRID TO THE PIN PATTERN ITSELF.
- IF LEAD FREE P/N. THE HOUSING WILL WITHSTAND EXPOSURE TO 260°C PEAK TEMPERATURE FOR 10 SECONDS IN A WAVE SOLDER APPLICATION WITH A 1.00MM MINIMUM THICK CIRCUIT BOARD.
- LEAD FREE PRODUCT MEETS EUROPEAN UNION DIRECTIVES AND OTHER COUNTRY REGULATIONS AS DESCRIBED IN GS-22-008
- IF LEAD FREE P/N. PACKAGING MEETS GS-14-920 SPECIFICATION

PIN NO.	36 , 67	1 , 17 , 34 35 , 51 , 68	OTHERS
DIM-L	3,50 ± 0,10	5,00 ± 0,10	4,25 ± 0,10

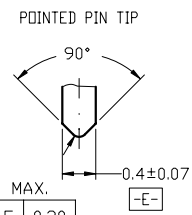
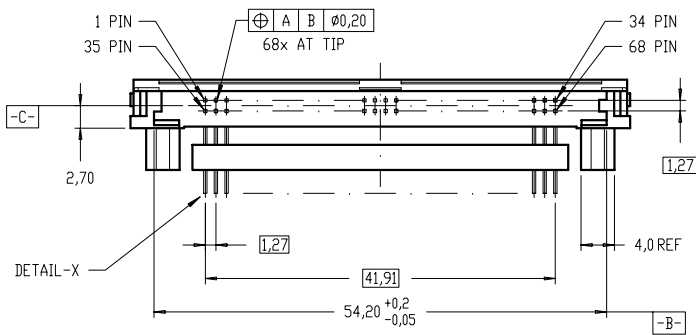
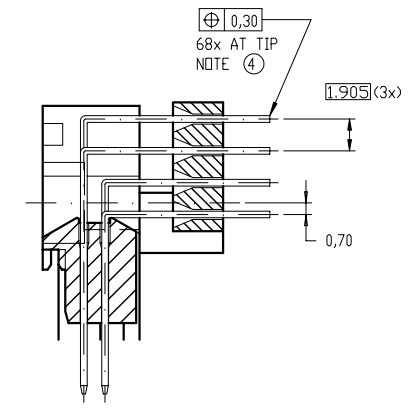
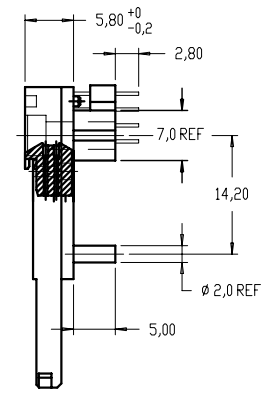
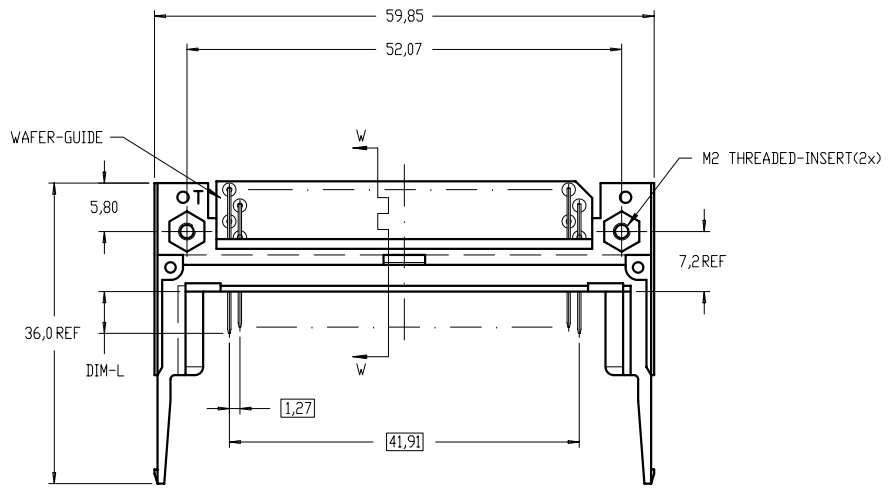
mat'l. code				tolerances unless otherwise specified		CUSTOMER COPY		 www.fciconnect.com	
ltr	ecn no	dr	date	linear	±.3		projection	title 68P EJECTOR HEADER ASSEMBLY FOR PCMCIA/JEIDA TYPE-I/II/III HEADER ASSEMBLY	
E					angles	0° ±2°		product family PCMCIA code NT	
				dr	WB JIANG	11/26/04	 MM scale N.T.S.	size dwg no	
				enrg	WB JIANG	11/26/04		92856	
				chr	WB JIANG	11/26/04		sheet 5 of	
				appd	JASON ZHOU	11/26/04			
sheet index	revision sheet								

Tous droits strictement reserves. Reproduction ou communication a des tiers interdite sous quelque forme que ce soit sans autorisation écrite du propriétaire. Propriete de c FCI. Droits de reproduction FCI.

FCI

All rights strictly reserved. Reproduction or issue to third parties in any form whatever is not permitted without written authority from the proprietor. Property of FCI. Copyright FCI.

PRODUCT NO.	MOUNTING STYLE	COLOR	SOLDER-TAIL STYLE	STAND-OFF	MOUNTING SUPPORT	BOARD LOCATOR
92856-020/020LF	TOP-MOUNT	BLACK	THRU-HOLE, R/A	5 mm	5 mm	NO



- NOTES :
- SEE TA-946 FOR PCB LAYOUT.
 - MATERIAL :
PLASTIC : LCP UL94V-0
PIN : PHOSPHOR BRONZE
 - FINISH (PIN) :
UNDER-PLATING : 0.5 um MIN. Ni
CONTACT AREA : 0.1 um Au OVER 0.5 um MIN. Pd-Ni
SOLDER AREA (TIN LEAD OPTION) : 2.5um MIN. Sn-Pb
SOLDER AREA(LEAD FREE OPTION) : 2.5um MIN. PURE TIN
 - IF LEAD FREE P/N. THE HOUSING WILL WITHSTAND EXPOSURE TO 260°C PEAK TEMPERATURE FOR 10 SECONDS IN A WAVE SOLDER APPLICATION WITH A 1.00MM MINIMUM THICK CIRCUIT BOARD.
 - LEAD FREE PRODUCT MEETS EUROPEAN UNION DIRECTIVES AND OTHER COUNTRY REGULATIONS AS DISCRIBLED IN GS-22-008
 - IF LEAD FREE P/N. PACKAGING MEETS GS-14-920 SPECIFICATION

PIN NO.	36 , 67	1 , 17 , 34 35 , 51 , 68	OTHERS
DIM-L	3,50 ± 0,10	5,00 ± 0,10	4,25 ± 0,10

mat'l. code		tolerances unless otherwise specified		CUSTOMER COPY	 www.fciconnect.com
ltr	ecn no	dr	date	projection	
E				linear ±.3	title 68P EJECTOR HEADER ASSEMBLY FOR PCMCIA/JEIDA TYPE-I/II/III HEADER ASSEMBLY
				angles 0° ±2°	product family PCMCIA code NT
		dr	WB JIANG 11/26/04	MM	size dwg no
		enrg	WB JIANG 11/26/04	scale N.T.S.	92856
		chr	WB JIANG 11/26/04		sheet 6 of
		appd	JASON ZHOU 11/26/04		
sheet index	revision sheet				

Tous droits strictement reserves. Reproduction ou communication a des tiers interdite sous quelque forme que ce soit sans autorisation écrite du propriétaire. Propriete de c FCI. Droits de reproduction FCI.

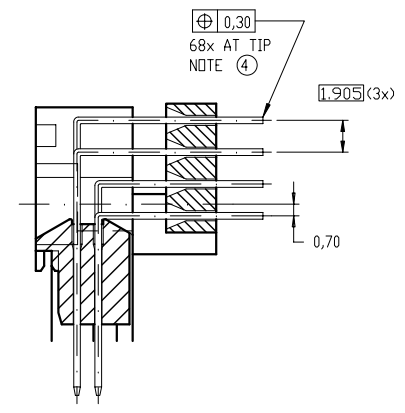
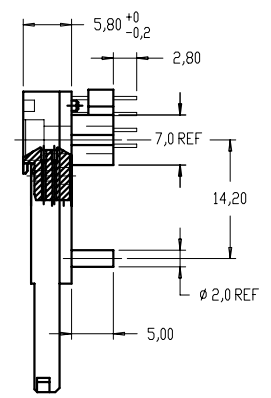
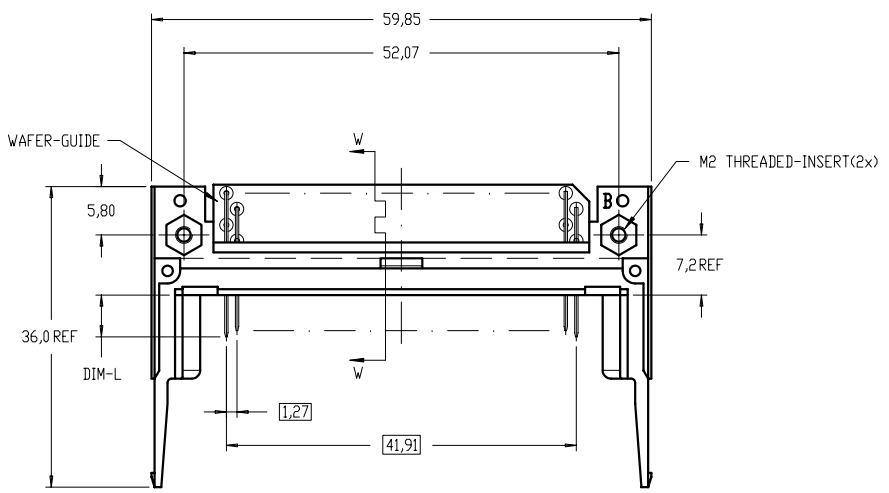
FCI

All rights strictly reserved. Reproduction or issue to third parties in any form whatever is not permitted without written authority from the proprietor. Property of FCI. Copyright FCI.

A

B

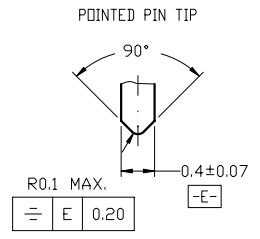
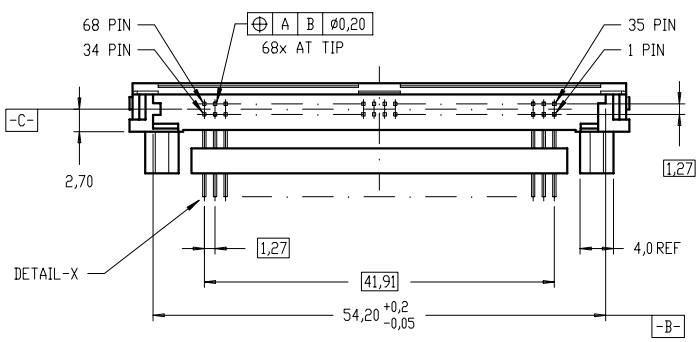
PRODUCT NO.	MOUNTING STYLE	COLOR	SOLDER-TAIL STYLE	STAND-OFF	MOUNTING SUPPORT	BOARD LOCATOR
92856-520/520LF	BOTTOM-MOUNT	NATURAL	THRU-HOLE, R/A	5 mm	5 mm	NO



SECTION A-A (SCALE 3 : 1)

NOTES :

- SEE TA-946 FOR PCB LAYOUT.
- MATERIAL :
PLASTIC : LCP UL94V-0
PIN : PHOSPHOR BRONZE
- FINISH (PIN) :
UNDER-PLATING : 0.5 um MIN. Ni
CONTACT AREA : 0.1 um Au OVER 0.5 um MIN. Pd-Ni
SOLDER AREA (TIN LEAD OPTION): 2.5um MIN. Sn-Pb
SOLDER AREA (LEAD FREE OPTION): 2.5um MIN. PURE TIN
- TRUE POSITION IS A FREE GRID TO THE PIN PATTERN ITSELF.
- IF LEAD FREE P/N. THE HOUSING WILL WITHSTAND EXPOSURE TO 260°C PEAK TEMPERATURE FOR 10 SECONDS IN A WAVE SOLDER APPLICATION WITH A 1.00MM MINIMUM THICK CIRCUIT BOARD.
- LEAD FREE PRODUCT MEETS EUROPEAN UNION DIRECTIVES AND OTHER COUNTRY REGULATIONS AS DISCRIBLED IN GS-22-008
- IF LEAD FREE P/N. PACKAGING MEETS GS-14-920 SPECIFICATION



DETAIL-X (SCALE 15 : 1)

PIN NO.	36 , 67	1 , 17 , 34 35 , 51 , 68	OTHERS
DIM-L	3,50 ± 0,10	5,00 ± 0,10	4,25 ± 0,10

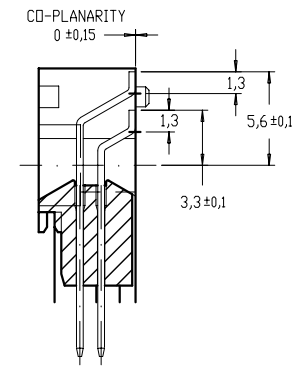
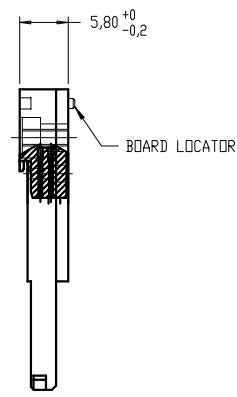
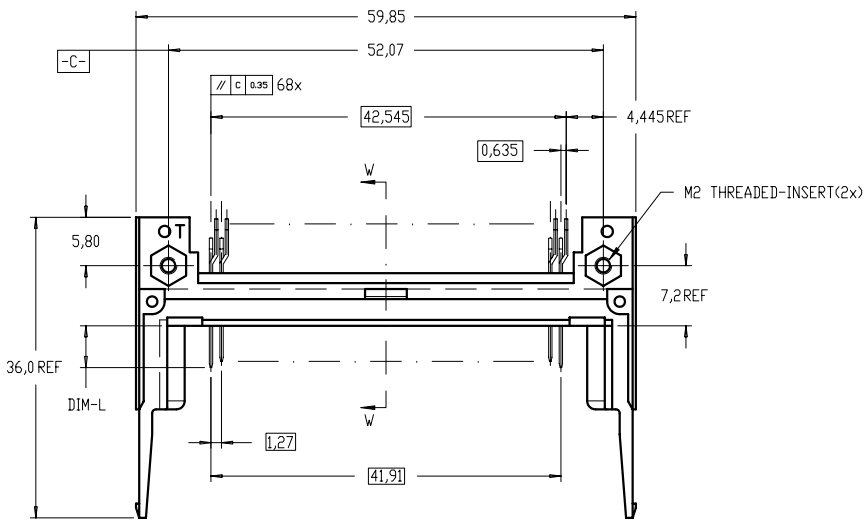
mat'l. code		tolerances unless otherwise specified		CUSTOMER COPY	 www.fciconnect.com
ltr	ecn no	dr	date	linear	
E				linear	±.3
				angles	0° ±2°
		dr	WB JIANG 11/26/04	MM	product family PCMCIA
		enrg	WB JIANG 11/26/04	scale	size dwg no
		chr	WB JIANG 11/26/04	N.T.S.	A
		appd	JASON ZHOU 11/26/04		92856
sheet index	revision sheet				code NT
					sheet 7 of

Tous droits strictement reserves. Reproduction ou communication a des tiers interdite sous quelque forme que ce soit sans autorisation ecrite du proprietaire. Propriete de c FCI. Droits de reproduction FCI.

FCI

All rights strictly reserved. Reproduction or issue to third parties in any form whatsoever is not permitted without written authority from the proprietor. Property of FCI. Copyright FCI.

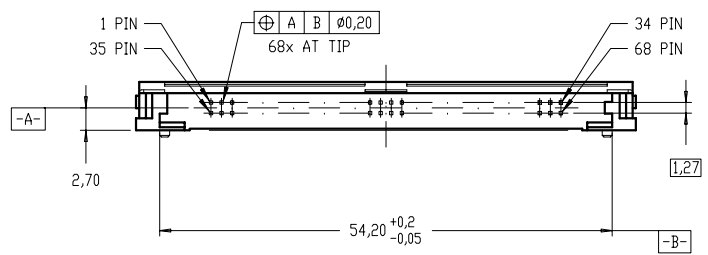
PRODUCT NO.	MOUNTING STYLE	COLOR	SOLDER-TAIL STYLE	STAND-OFF	MOUNTING SUPPORT	BOARD LOCATOR
92856-001/001LF	TOP-MOUNT	BLACK	SMT, STAGGERED (DOUBLE-ROW)	NO	NO	YES



SECTION W-W (SCALE 3 : 1)

NOTES :

- SEE TA-946 FOR PCB LAYOUT.
- MATERIAL :
PLASTIC : LCP UL94V-0
PIN : PHOSPHOR BRONZE
- FINISH (PIN) :
UNDER-PLATING : 0.5 um MIN. Ni
CONTACT AREA : 0.1 um Au OVER 0.5 um MIN. Pd-Ni
SOLDER AREA (TIN LEAD OPTION): 2.5um MIN. Sn-Pb
SOLDER AREA (LEAD FREE OPTION): 2.5um MIN. PURE TIN
- IF LEAD FREE P/N. THE HOUSING WILL WITHSTAND EXPOSURE TO 260°C PEAK TEMPERATURE FOR 40 SECONDS IN A CONVECTION, INFRA-RED OR VAPOR PHASE REFLOW OVEN.
- LEAD FREE PRODUCT MEETS EUROPEAN UNION DIRECTIVES AND OTHER COUNTRY REGULATIONS AS DISCRIBLED IN GS-22-008
- IF LEAD FREE P/N. PACKAGING MEETS GS-14-920 SPECIFICATION



PIN NO.	36 , 67	1 , 17 , 34 35 , 51 , 68	OTHERS
DIM-L	3,50 ± 0,10	5,00 ± 0,10	4,25 ± 0,10

mat'l. code				tolerances unless otherwise specified		CUSTOMER COPY	 www.fciconnect.com	
ltr	ecn no	dr	date	linear	±.3	projection	title 68P EJECTOR HEADER ASSEMBLY FOR PCMCIA/JEIDA TYPE-I/II/III HEADER ASSEMBLY	
E				angles	0° ±2°	 MM	product family	PCMCIA
				dr	WB JIANG 11/26/04	scale	size	dwg no
				enrg	WB JIANG 11/26/04	N.T.S.	A	92856
				chr	WB JIANG 11/26/04			code
				appd	JASON ZHOU 11/26/04			NT
sheet index	revision sheet							sheet 8 of

Tous droits strictement reserves. Reproduction ou communication a des tiers interdite sous quelque forme que ce soit sans autorisation écrite du propriétaire. Propriete de c FCI. Droits de reproduction FCI.

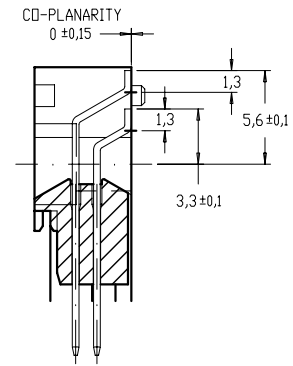
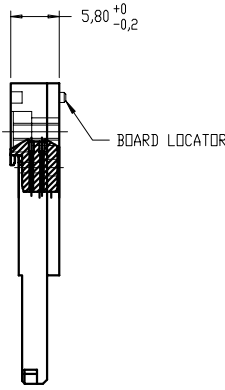
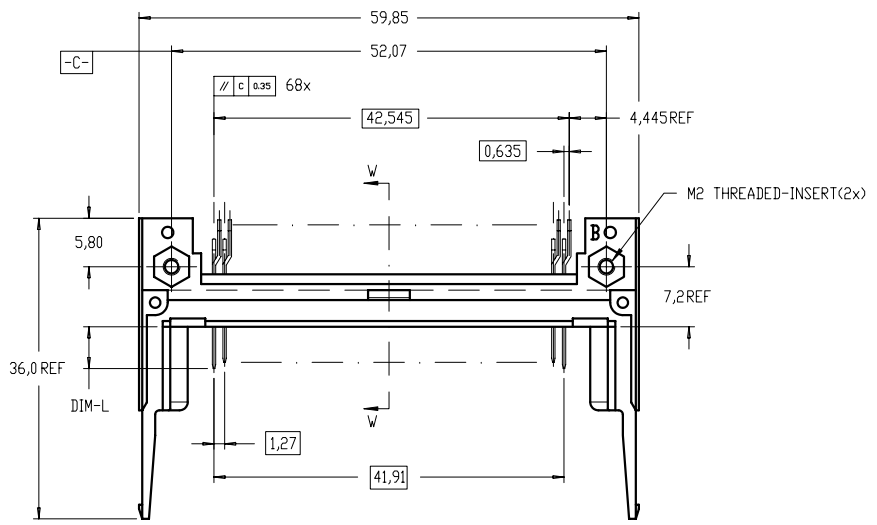
FCI

All rights strictly reserved. Reproduction or issue to third parties in any form whatsoever is not permitted without written authority from the proprietor. Property of FCI. Copyright FCI.

A

B

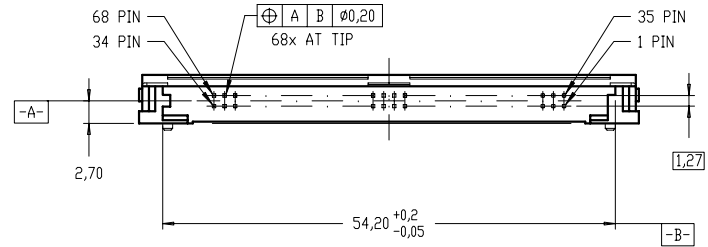
PRODUCT NO.	MOUNTING STYLE	COLOR	SOLDER-TAIL STYLE	STAND-OFF	MOUNTING SUPPORT	BOARD LOCATOR
92856-501/501LF	BOTTOM-MOUNT	NATURAL	SMT, STAGGERED (DOUBLE-ROW)	NO	NO	YES



SECTION W-W (SCALE 3 : 1)

NOTES :

- SEE TA-946 FOR PCB LAYOUT.
- MATERIAL :
PLASTIC : LCP UL94V-0
PIN : PHOSPHOR BRONZE
- FINISH (PIN) :
UNDER-PLATING : 0.5 um MIN. Ni
CONTACT AREA : 0.1 um Au OVER 0.5 um MIN. Pd-Ni
SOLDER AREA (TIN LEAD OPTION): 2.5um MIN. Sn-Pb
SOLDER AREA (LEAD FREE OPTION): 2.5um MIN. PURE TIN
- IF LEAD FREE P/N. THE HOUSING WILL WITHSTAND EXPOSURE TO 260°C PEAK TEMPERATURE FOR 40 SECONDS IN A CONVECTION, INFRA-RED OR VAPOR PHASE REFLOW OVEN.
- LEAD FREE PRODUCT MEETS EUROPEAN UNION DIRECTIVES AND OTHER COUNTRY REGULATIONS AS DISCRIBLED IN GS-22-008
- IF LEAD FREE P/N. PACKAGING MEETS GS-14-920 SPECIFICATION



PIN NO.	36 , 67	1 , 17 , 34 35 , 51 , 68	OTHERS
DIM-L	3,50 ± 0,10	5,00 ± 0,10	4,25 ± 0,10

mat'l. code		tolerances unless otherwise specified		CUSTOMER COPY	 www.fciconnect.com
ltr	ecn no	dr	date	linear	
E				±.3	
				angles	0° ±2'
		dr	WB JIANG	11/26/04	 MM scale N.T.S.
		enrg	WB JIANG	11/26/04	
		chr	WB JIANG	11/26/04	
		appd	JASON ZHOU	11/26/04	
sheet index	revision sheet				title 68P EJECTOR HEADER ASSEMBLY FOR PCMCIA/JEIDA TYPE-I/II/III HEADER ASSEMBLY product family PCMCIA size dwg no 92856 code NT sheet 09 of

1 | 2

3 |

4

ACAD

PDM: Rev:E

STATUS: Released 2526 Printed: Feb 20, 2010

A

B

Tous droits strictement reserves. Reproduction ou communication a des tiers interdite sous quelque forme que ce soit sans autorisation écrite du propriétaire. Propriete de c FCI. Droits de reproduction FCI.

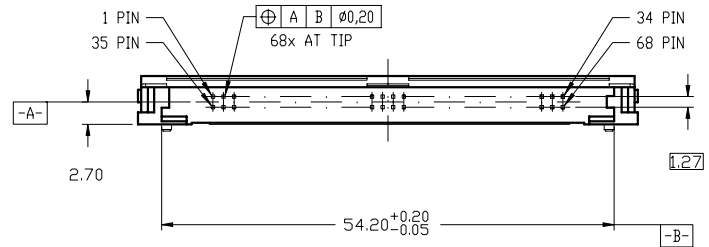
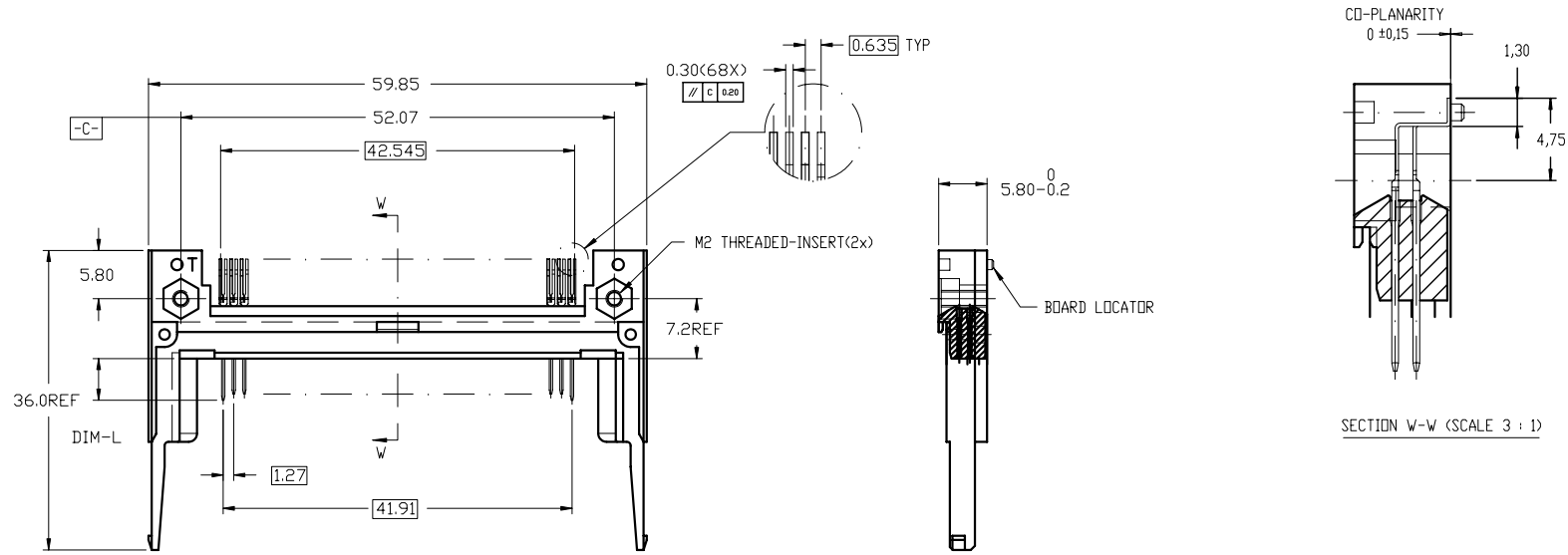
FCI

All rights strictly reserved. Reproduction or issue to third parties in any form whatsoever is not permitted without written authority from the proprietor. Property of FCI. Copyright FCI.

A

B

PRODUCT NO.	MOUNTING STYLE	COLOR	SOLDER-TAIL STYLE	STAND-OFF	MOUNTING SUPPORT	BOARD LOCATOR
92856-002/002LF	TOP-MOUNT	BLACK	SMT IN-LINE (SINGLE-ROW)	NO	NO	YES



NOTES :

- SEE TA-946 FOR PCB LAYOUT.
- MATERIAL :
PLASTIC : LCP UL94V-0
PIN : PHOSPHOR BRONZE
- FINISH (PIN) :
UNDER-PLATING : 0.5 um MIN. Ni
CONTACT AREA : 0.1 um Au OVER 0.5 um MIN. Pd-Ni
SOLDER AREA (TIN LEAD OPTION): 2.5um MIN. Sn-Pb
SOLDER AREA(LEAD FREE OPTION) : 2.5um MIN. PURE TIN
- IF LEAD FREE P/N. THE HOUSING WILL WITHSTAND EXPOSURE TO 260°C PEAK TEMPERATURE FOR 40 SECONDS IN A CONVECTION, INFRA-RED OR VAPOR PHASE REFLOW OVEN.
- LEAD FREE PRODUCT MEETS EUROPEAN UNION DIRECTIVES AND OTHER COUNTRY REGULATIONS AS DISCRIBLED IN GS-22-008
- IF LEAD FREE P/N. PACKAGING MEETS GS-14-920 SPECIFICATION

PIN NO.	36 , 67	1 , 17 , 34 35 , 51 , 68	OTHERS
DIM-L	3,50 ± 0,10	5,00 ± 0,10	4,25 ± 0,10

mat'l. code		tolerances unless otherwise specified		CUSTOMER COPY	 www.fciconnect.com
ltr	ecn no	dr	date	linear	
E				angles	
				dr	MM
				enr	←
				chr	→
				appd	scale
					N.T.S.
sheet index	revision sheet			title 68P EJECTOR HEADER ASSEMBLY FOR PCMCIA/JEIDA TYPE-I/II/III HEADER ASSEMBLY product family PCMCIA code NT size dwg no 92856 sheet 10 of	

1 | 2

3 |

4

ACAD

PDM: Rev:E

STATUS: Released 25 Feb 20, 2010

Tous droits strictement reserves. Reproduction ou communication a des tiers interdite sous quelque forme que ce soit sans autorisation écrite du propriétaire. Propriete de c FCI. Droits de reproduction FCI.

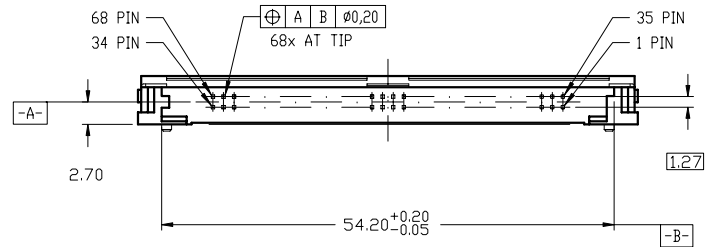
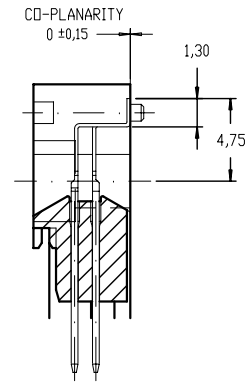
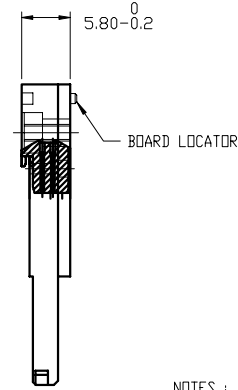
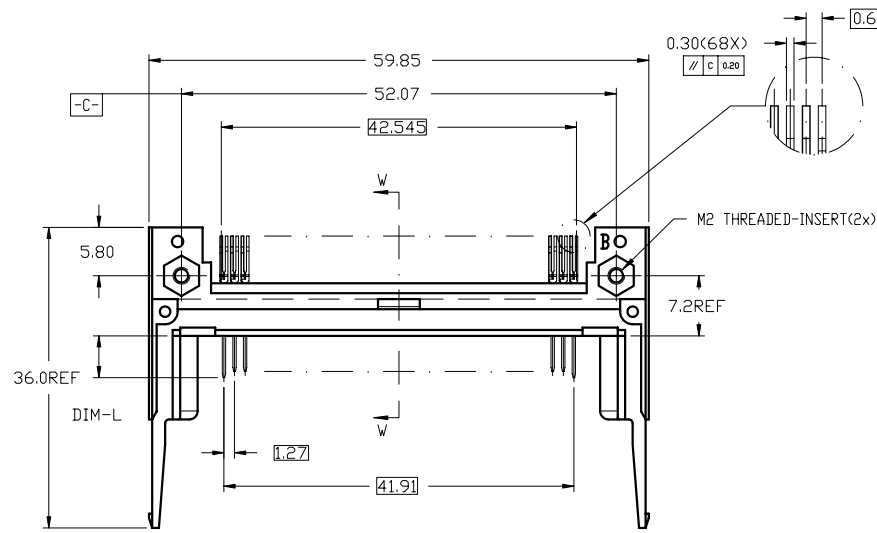
FCI

All rights strictly reserved. Reproduction or issue to third parties in any form whatever is not permitted without written authority from the proprietor. Property of FCI. Copyright FCI.

A

B

PRODUCT NO.	MOUNTING STYLE	COLOR	SOLDER-TAIL STYLE	STAND-OFF	MOUNTING SUPPORT	BOARD LOCATOR
92856-502/502LF	BOTTOM-MOUNT	NATURAL	SMT IN-LINE (SINGLE-ROW)	NO	NO	YES



NOTES :

- SEE TA-946 FOR PCB LAYOUT.
- MATERIAL :
PLASTIC : LCP UL94V-0
PIN : PHOSPHOR BRONZE
- FINISH (PIN) :
UNDER-PLATING : 0.5 um MIN. Ni
CONTACT AREA : 0.1 um Au OVER 0.5 um MIN. Pd-Ni
SOLDER AREA (TIN LEAD OPTION) : 2.5um MIN. Sn-Pb
SOLDER AREA(LEAD FREE OPTION) : 2.5um MIN. PURE TIN
- IF LEAD FREE P/N. THE HOUSING WILL WITHSTAND EXPOSURE TO 260°C PEAK TEMPERATURE FOR 40 SECONDS IN A CONVECTION, INFRA-RED OR VAPOR PHASE REFLOW OVEN.
- LEAD FREE PRODUCT MEETS EUROPEAN UNION DIRECTIVES AND OTHER COUNTRY REGULATIONS AS DISCRIBED IN GS-22-008
- IF LEAD FREE P/N. PACKAGING MEETS GS-14-920 SPECIFICATION

PIN NO.	36 , 67	1 , 17 , 34 35 , 51 , 68	OTHERS
DIM-L	3,50 ± 0,10	5,00 ± 0,10	4,25 ± 0,10

mat'l. code		tolerances unless otherwise specified		CUSTOMER COPY	 www.fciconnect.com	
ltr	ecn no	dr	date	linear		projection
E				angles		title
				dr	MM	product family
				enrg		size
				chr		code
				appd		sheet
					N.T.S.	11 of
sheet index	revision sheet					

1 | 2

3 |

4

ACAD

PDM: Rev:E

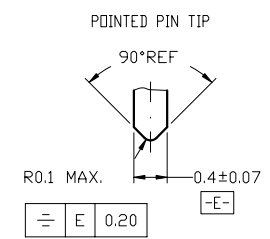
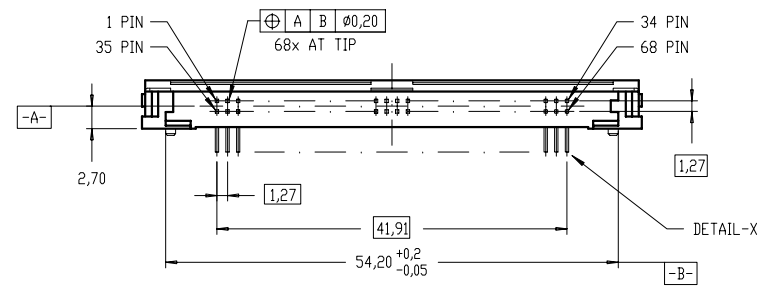
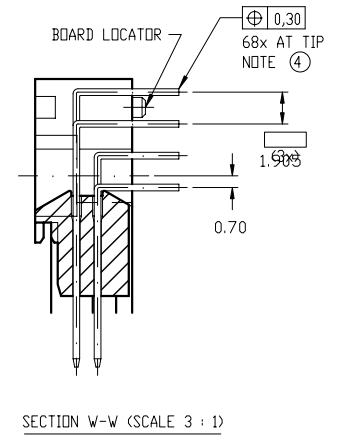
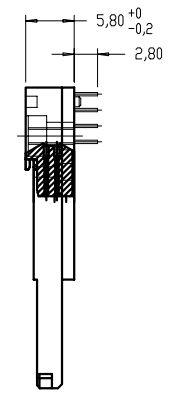
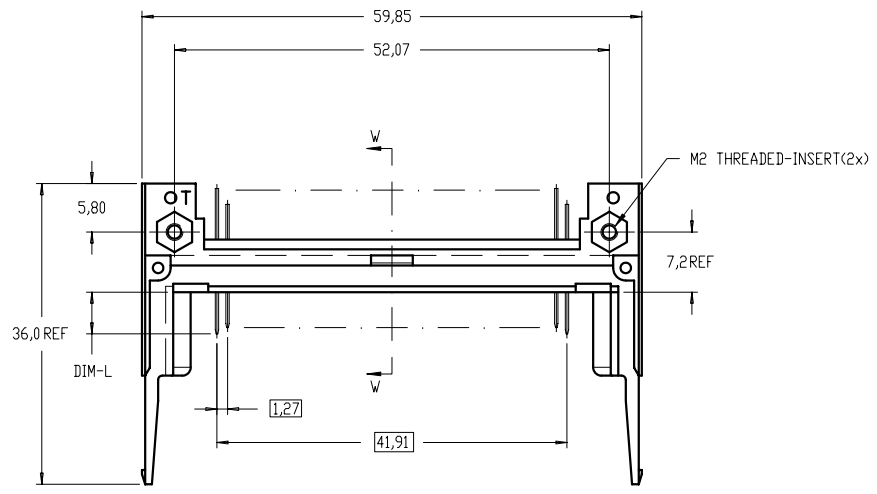
STATUS: Released 25 Feb 20, 2010

Tous droits strictement reserves. Reproduction ou communication a des tiers interdite sous quelque forme que ce soit sans autorisation écrite du propriétaire. Propriete de c FCI. Droits de reproduction FCI.

FCI

All rights strictly reserved. Reproduction or issue to third parties in any form whatever is not permitted without written authority from the proprietor. Property of FCI. Copyright FCI.

PRODUCT NO.	MOUNTING STYLE	COLOR	SOLDER-TAIL STYLE	STAND-OFF	MOUNTING SUPPORT	BOARD LOCATOR
92856-003/003LF	TOP-MOUNT	BLACK	THRU-HOLE, R/A	NO	NO	YES



- NOTES :
- SEE TA-946 FOR PCB LAYOUT.
 - MATERIAL :
PLASTIC : LCP UL94V-0
PIN : PHOSPHOR BRONZE
 - FINISH (PIN) :
UNDER-PLATING : 0,5 um MIN. NI
CONTACT AREA : 0,1 um Au OVER 0,5 um MIN. Pd-NI
SOLDER AREA (TIN LEAD OPTION): 2,5um MIN. Sn-Pb
SOLDER AREA (LEAD FREE OPTION): 2,5um MIN. PURE TIN
 - TRUE POSITION IS A FREE GRID TO THE PIN PATTERN ITSELF.
 - IF LEAD FREE P/N. THE HOUSING WILL WITHSTAND EXPOSURE TO 260°C PEAK TEMPERATURE FOR 10 SECONDS IN A WAVE SOLDER APPLICATION WITH A 1,00MM MINIMUM THICK CIRCUIT BOARD.
 - LEAD FREE PRODUCT MEETS EUROPEAN UNION DIRECTIVES AND OTHER COUNTRY REGULATIONS AS DISCRIBED IN GS-22-008
 - IF LEAD FREE P/N. PACKAGING MEETS GS-14-920 SPECIFICATION

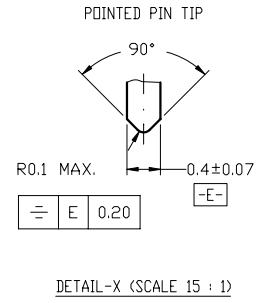
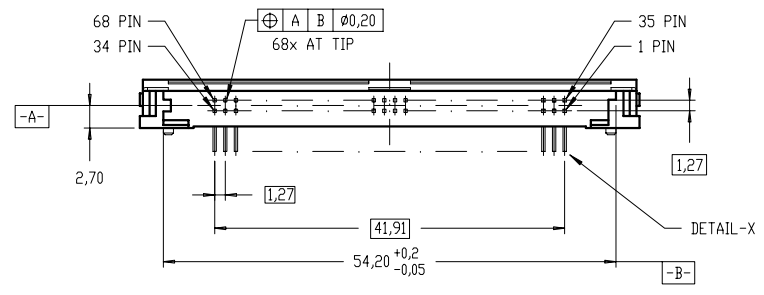
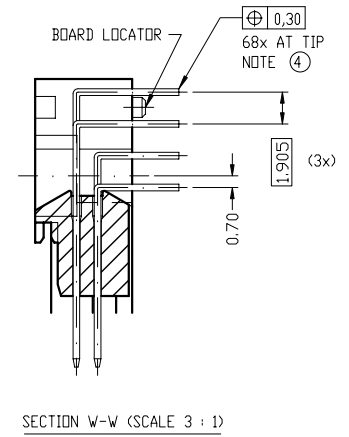
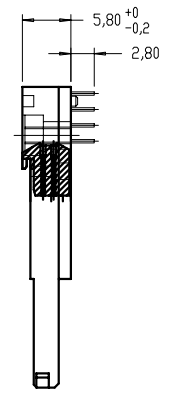
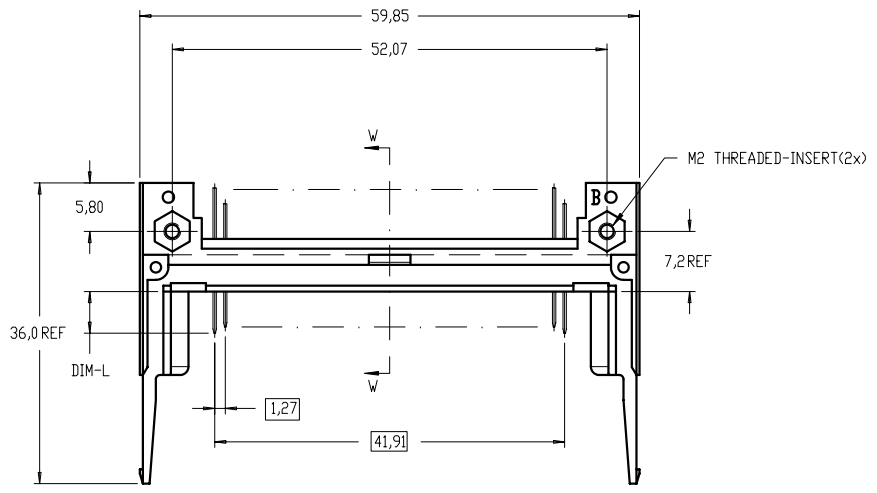
PIN NO.	36 , 67	1 , 17 , 34 35 , 51 , 68	OTHERS
DIM-L	3,50 ± 0,10	5,00 ± 0,10	4,25 ± 0,10

mat'l. code				tolerances unless otherwise specified		CUSTOMER COPY		 www.fciconnect.com	
ltr	ecn no	dr	date	linear	±.3	projection	title 68P EJECTOR HEADER ASSEMBLY FOR PCMCIA/JEIDA TYPE-I/II/III HEADER ASSEMBLY		
E				angles	0° ±2'	 MM	product family	PCMCIA	code
				dr	WB JIANG 11/26/04	scale	size	dwg no	NT
				enrg	WB JIANG 11/26/04	N.T.S.	A	92856	sheet
				chr	WB JIANG 11/26/04				12 of
				appd	JASON ZHOU 11/26/04				
sheet index	revision sheet								

Tous droits strictement reserves. Reproduction ou communication a des tiers interdite sous quelque forme que ce soit sans autorisation écrite du propriétaire. Propriete de c FCI. Droits de reproduction FCI.

All rights strictly reserved. Reproduction or issue to third parties in any form whatever is not permitted without written authority from the proprietor. Property of FCI. Copyright FCI.

PRODUCT NO.	MOUNTING STYLE	COLOR	SOLDER-TAIL STYLE	STAND-OFF	MOUNTING SUPPORT	BOARD LOCATOR
92856-503/503LF	BOTTOM-MOUNT	NATURAL	THRU-HOLE, R/A	NO	NO	YES



NOTES :

- SEE TA-946 FOR PCB LAYOUT.
- MATERIAL :
PLASTIC : LCP UL94V-0
PIN : PHOSPHOR BRONZE
- FINISH (PIN) :
UNDER-PLATING : 0.5 um MIN. NI
CONTACT AREA : 0.1 um Au OVER 0.5 um MIN. Pd-Ni
SOLDER AREA (TIN LEAD OPTION): 2.5um MIN. Sn-Pb
SOLDER AREA (LEAD FREE OPTION): 2.5um MIN. PURE TIN
- TRUE POSITION IS A FREE GRID TO THE PIN PATTERN ITSELF.
- IF LEAD FREE P/N. THE HOUSING WILL WITHSTAND EXPOSURE TO 260°C PEAK TEMPERATURE FOR 10 SECONDS IN A WAVE SOLDER APPLICATION WITH A 1.00MM MINIMUM THICK CIRCUIT BOARD.
- LEAD FREE PRODUCT MEETS EUROPEAN UNION DIRECTIVES AND OTHER COUNTRY REGULATIONS AS DESCRIBED IN GS-22-008
- IF LEAD FREE P/N. PACKAGING MEETS GS-14-920 SPECIFICATION

PIN NO.	36 , 67	1 , 17 , 34 35 , 51 , 68	OTHERS
DIM-L	3,50 ± 0,10	5,00 ± 0,10	4,25 ± 0,10

mat'l. code				tolerances unless otherwise specified			CUSTOMER COPY		 www.fciconnect.com			
ltr	ecn no	dr	date	linear	±.3			projection	title 68P EJECTOR HEADER ASSEMBLY FOR PCMCIA/JEIDA TYPE-I/II/III HEADER ASSEMBLY			
E					angles	0° ±2'			 MM	product family PCMCIA	code NT	
				dr	WB JIANG	11/26/04		scale N.T.S.		A	92856	
				enrg	WB JIANG	11/26/04			size dwg no			sheet 13 of
				chr	WB JIANG	11/26/04						
				appd	JASON ZHOU	11/26/04						
sheet index	revision sheet											

Tous droits strictement reserves. Reproduction ou communication a des tiers interdite sous quelque forme que ce soit sans autorisation écrite du propriétaire. Propriete de c FCI. Droits de reproduction FCI.

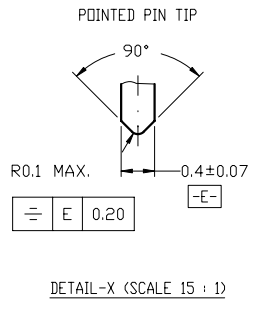
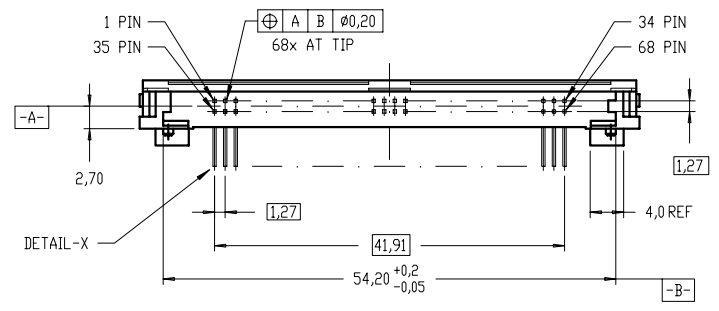
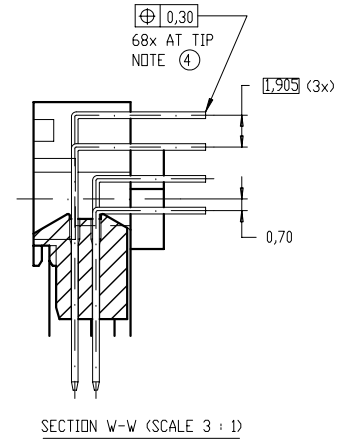
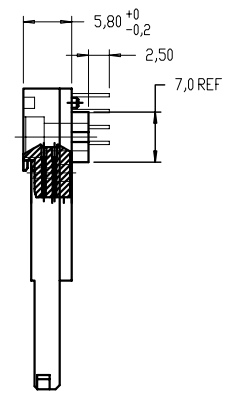
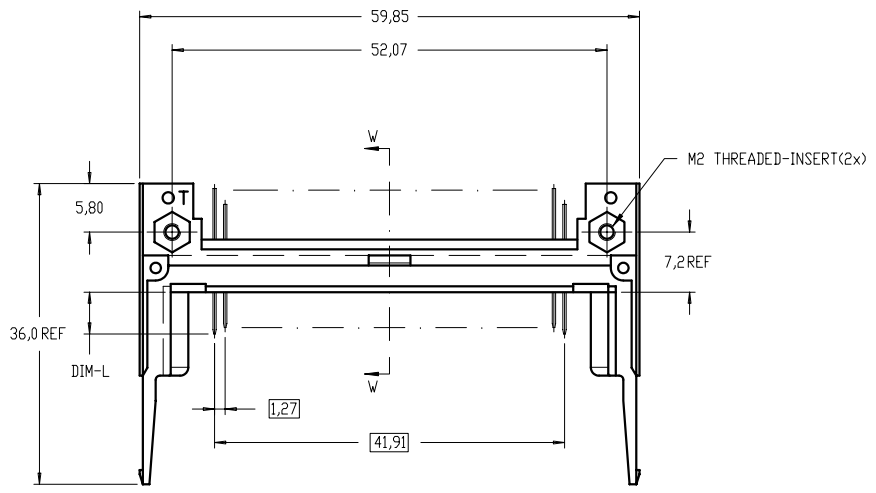
FCI

All rights strictly reserved. Reproduction or issue to third parties in any form whatever is not permitted without written authority from the proprietor. Property of FCI. Copyright FCI.

A

B

PRODUCT NO.	MOUNTING STYLE	COLOR	SOLDER-TAIL STYLE	STAND-OFF	MOUNTING SUPPORT	BOARD LOCATOR
92856-080/080LF	TOP-MOUNT	BLACK	THRU-HOLE, R/A	2 mm	NO	NO



NOTES :

- SEE TA-946 FOR PCB LAYOUT.
- MATERIAL :
PLASTIC : LCP UL94V-0
PIN : PHOSPHOR BRONZE
- FINISH (PIN) :
UNDER-PLATING : 0.5 um MIN. Ni
CONTACT AREA : 0.1 um Au OVER 0.5 um MIN. Pd-Ni
SOLDER AREA (TIN LEAD OPTION): 2.5um MIN. Sn-Pb
SOLDER AREA (LEAD FREE OPTION): 2.5um MIN. PURE TIN
- TRUE POSITION IS A FREE GRID TO THE PIN PATTERN ITSELF.
- IF LEAD FREE P/N. THE HOUSING WILL WITHSTAND EXPOSURE TO 260°C PEAK TEMPERATURE FOR 10 SECONDS IN A WAVE SOLDER APPLICATION WITH A 1.00MM MINIMUM THICK CIRCUIT BOARD.
- LEAD FREE PRODUCT MEETS EUROPEAN UNION DIRECTIVES AND OTHER COUNTRY REGULATIONS AS DISCRIBED IN GS-22-008
- IF LEAD FREE P/N. PACKAGING MEETS GS-14-920 SPECIFICATION

A

PIN NO.	36 , 67	1 , 17 , 34 35 , 51 , 68	OTHERS
DIM-L	3,50 ± 0,10	5,00 ± 0,10	4,25 ± 0,10

mat'l. code		tolerances unless otherwise specified		CUSTOMER COPY	 www.fciconnect.com
ltr	ecn no	dr	date	linear	
E				angles	
				dr	MM
				enr	←
				chr	→
				appd	scale
				JASON ZHOU	N.T.S.
sheet index	revision sheet				

title	68P EJECTOR HEADER ASSEMBLY FOR PCMCIA/JEIDA TYPE-I/II/III HEADER ASSEMBLY	
product family	PCMCIA	code
size	dwg no	NT
	92856	sheet 14 of

1 | 2

3 |

4

ACAD

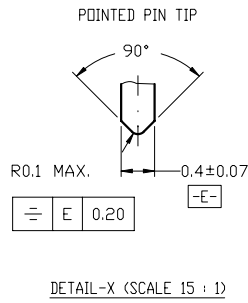
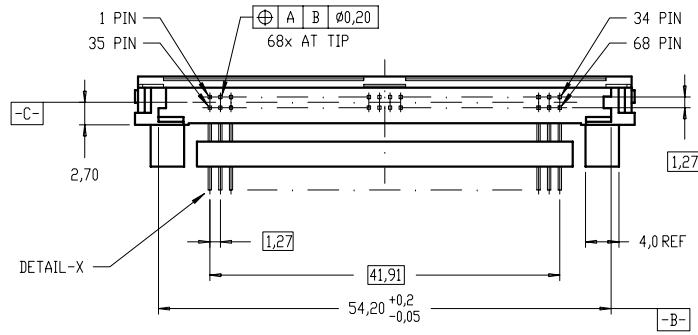
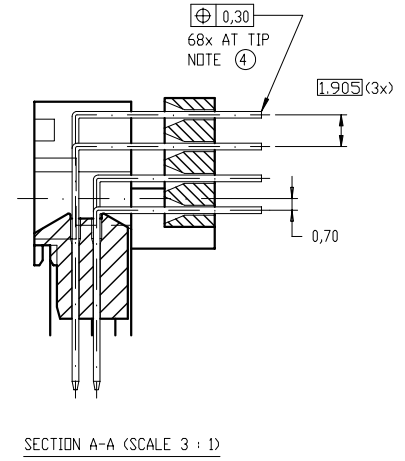
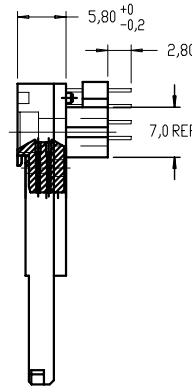
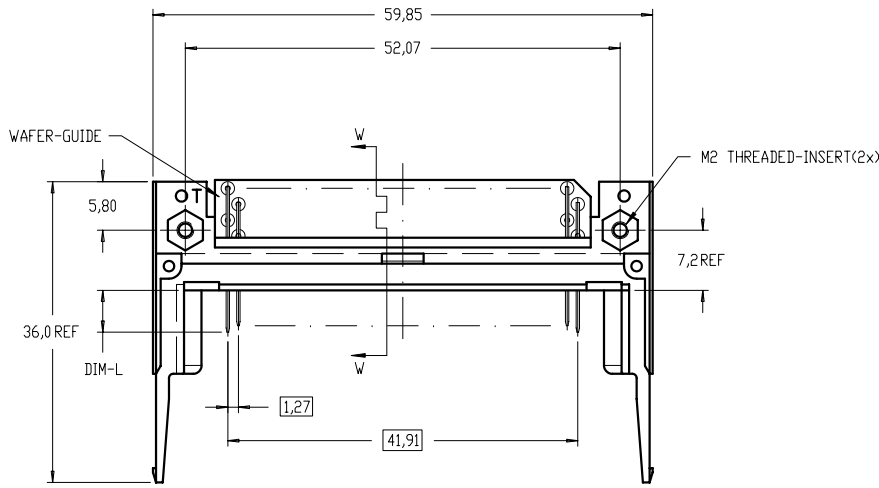
PDM: Rev:E

STATUS: Released 25 Feb 20, 2010

Tous droits strictement reserves. Reproduction ou communication a des tiers interdite sous quelque forme que ce soit sans autorisation ecrite du propriétaire. Propriete de c FCI. Droits de reproduction FCI.

All rights strictly reserved. Reproduction or issue to third parties in any form whatever is not permitted without written authority from the proprietor. Property of FCI. Copyright FCI.

PRODUCT NO.	MOUNTING STYLE	COLOR	SOLDER-TAIL STYLE	STAND-OFF	MOUNTING SUPPORT	BOARD LOCATOR
92856-020/020LF	TOP-MOUNT	BLACK	THRU-HOLE, R/A	5 mm	NO	NO



- NOTES :
- SEE TA-946 FOR PCB LAYOUT.
 - MATERIAL :
PLASTIC : LCP UL94V-0
PIN : PHOSPHOR BRONZE
 - FINISH (PIN) :
UNDER-PLATING : 0.5 um MIN. Ni
CONTACT AREA : 0.1 um Au OVER 0.5 um MIN. Pd-Ni
SOLDER AREA (TIN LEAD OPTION): 2.5um MIN. Sn-Pb
SOLDER AREA (LEAD FREE OPTION): 2.5um MIN. PURE TIN
 - TRUE POSITION IS A FREE GRID TO THE PIN PATTERN ITSELF.
 - IF LEAD FREE P/N. THE HOUSING WILL WITHSTAND EXPOSURE TO 260°C PEAK TEMPERATURE FOR 10 SECONDS IN A WAVE SOLDER APPLICATION WITH A 1.00MM MINIMUM THICK CIRCUIT BOARD.
 - LEAD FREE PRODUCT MEETS EUROPEAN UNION DIRECTIVES AND OTHER COUNTRY REGULATIONS AS DESCRIBED IN GS-22-008
 - IF LEAD FREE P/N. PACKAGING MEETS GS-14-920 SPECIFICATION

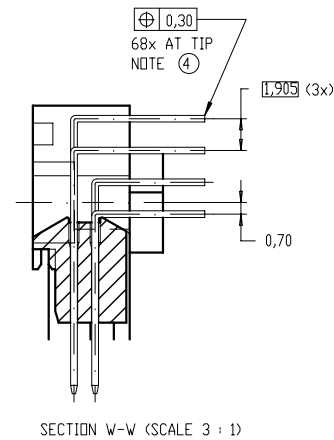
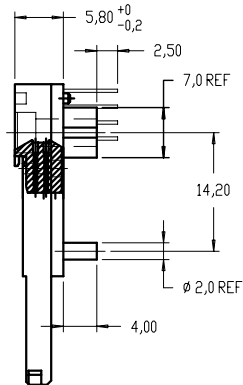
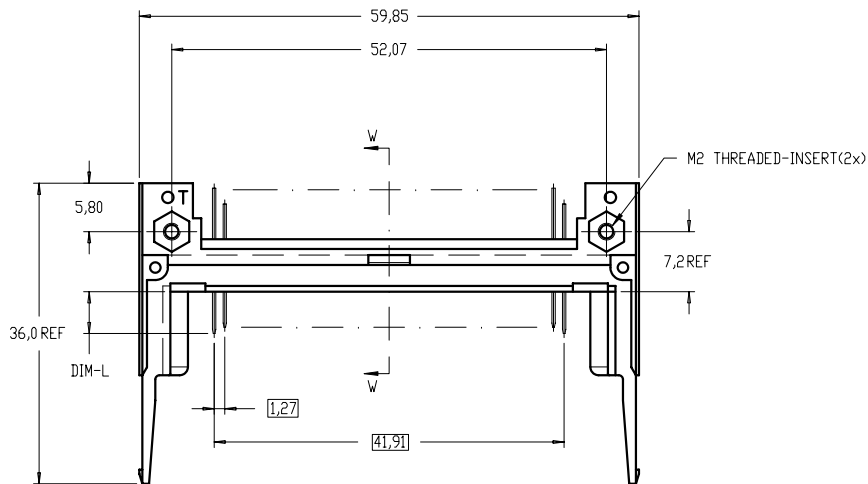
PIN NO.	36 , 67	1 , 17 , 34 35 , 51 , 68	OTHERS
DIM-L	3,50 ± 0,10	5,00 ± 0,10	4,25 ± 0,10

mat'l. code				tolerances unless otherwise specified		CUSTOMER COPY		 www.fciconnect.com	
ltr	ecn no	dr	date	linear	±.3	projection	title 68P EJECTOR HEADER ASSEMBLY FOR PCMCIA/JEIDA TYPE-I/II/III HEADER ASSEMBLY		
E				angles	0° ±2°	 MM	product family	PCMCIA	code
				dr	WB JIANG 11/26/04	scale	size	dwg no	NT
				enrg	WB JIANG 11/26/04	N.T.S.	A	92856	sheet
				chr	WB JIANG 11/26/04				15 of
				appd	JASON ZHOU 11/26/04				
sheet index	revision sheet								

Tous droits strictement reserves. Reproduction ou communication a des tiers interdite sous quelque forme que ce soit sans autorisation écrite du propriétaire. Propriete de c FCI. Droits de reproduction FCI.

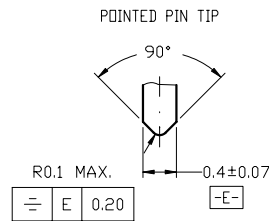
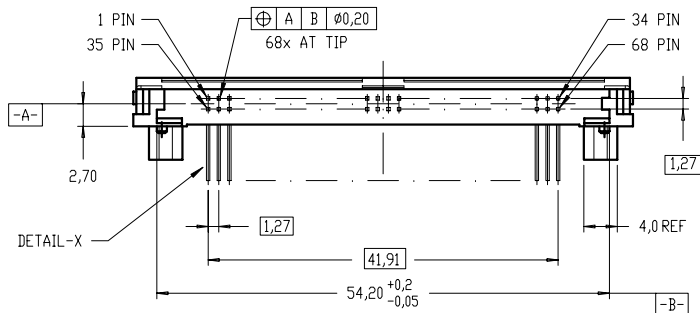
All rights strictly reserved. Reproduction or issue to third parties in any form whatever is not permitted without written authority from the proprietor. Property of FCI. Copyright FCI.

PRODUCT NO.	MOUNTING STYLE	COLOR	SOLDER-TAIL STYLE	STAND-OFF	MOUNTING SUPPORT	BOARD LOCATOR
92856-010/010LF	TOP-MOUNT	BLACK	THRU-HOLE, R/A	4 mm	4 mm	NO



NOTES :

- SEE TA-946 FOR PCB LAYOUT.
- MATERIAL :
PLASTIC : LCP UL94V-0
PIN : PHOSPHOR BRONZE
- FINISH (PIN) :
UNDER-PLATING : 0.5 um MIN. Ni
CONTACT AREA : 0.1 um Au OVER 0.5 um MIN. Pd-Ni
SOLDER AREA (TIN LEAD OPTION): 2.5um MIN. Sn-Pb
SOLDER AREA (LEAD FREE OPTION): 2.5um MIN. PURE TIN
- TRUE POSITION IS A FREE GRID TO THE PIN PATTERN ITSELF.
- IF LEAD FREE P/N. THE HOUSING WILL WITHSTAND EXPOSURE TO 260°C PEAK TEMPERATURE FOR 10 SECONDS IN A WAVE SOLDER APPLICATION WITH A 1.00MM MINIMUM THICK CIRCUIT BOARD.
- LEAD FREE PRODUCT MEETS EUROPEAN UNION DIRECTIVES AND OTHER COUNTRY REGULATIONS AS DISCRIBLED IN GS-22-008
- IF LEAD FREE P/N. PACKAGING MEETS GS-14-920 SPECIFICATION



DETAIL-X (SCALE 15 : 1)

PIN NO.	36 , 67	1 , 17 , 34 35 , 51 , 68	OTHERS
DIM-L	3,50 ± 0,10	5,00 ± 0,10	4,25 ± 0,10

mat'l. code				tolerances unless otherwise specified		CUSTOMER COPY		 www.fciconnect.com	
ltr	ecn no	dr	date	linear	±.3		projection	title 68P EJECTOR HEADER ASSEMBLY FOR PCMCIA/JEIDA TYPE-I/II/III HEADER ASSEMBLY	
E					angles	0° ±2'		product family PCMCIA code NT	
				dr	WB JIANG	11/26/04	 MM	size dwg no	
				enr	WB JIANG	11/26/04		A 92856	
				chr	WB JIANG	11/26/04		sheet 16 of	
				appd	JASON ZHOU	11/26/04		scale N.T.S.	
sheet index	revision sheet							cage code	

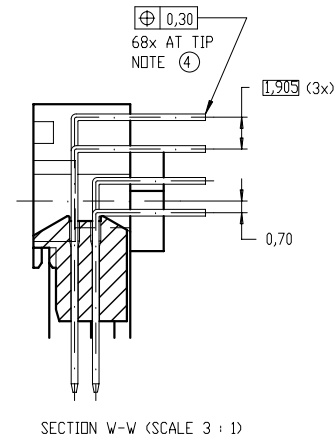
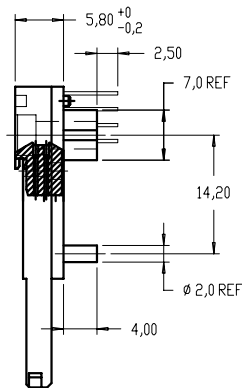
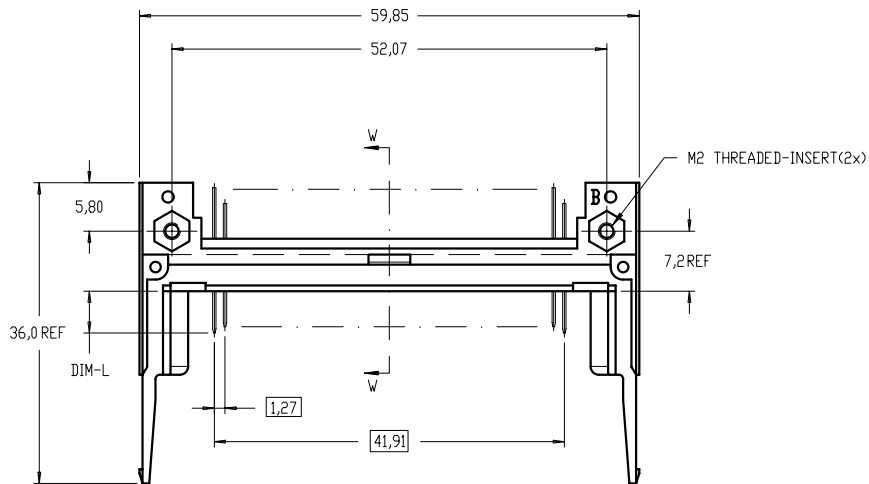
PDM: Rev:E

STATUS: Released 26 Printed: Feb 20, 2010

Tous droits strictement reserves. Reproduction ou communication a des tiers interdite sous quelque forme que ce soit sans autorisation ecrite du proprietaire. Propriete de c FCI. Droits de reproduction FCI.

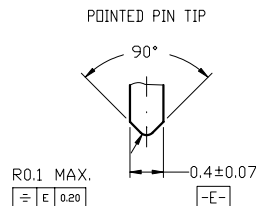
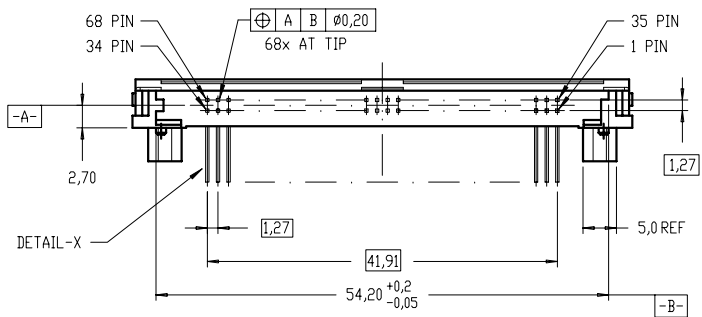
All rights strictly reserved. Reproduction or issue to third parties in any form whatever is not permitted without written authority from the proprietor. Property of FCI. Copyright FCI.

PRODUCT NO.	MOUNTING STYLE	COLOR	SOLDER-TAIL STYLE	STAND-OFF	MOUNTING SUPPORT	BOARD LOCATOR
92856-510/510LF	BOTTOM-MOUNT	NATURAL	THRU-HOLE, R/A	4 mm	4 mm	NO



NOTES :

- SEE TA-946 FOR PCB LAYOUT.
- MATERIAL :
PLASTIC : LCP UL94V-0
PIN : PHOSPHOR BRONZE
- FINISH (PIN) :
UNDER-PLATING : 0,5 µm MIN. Ni
CONTACT AREA : 0,1 µm Au OVER 0,5 µm MIN. Pd-Ni
SOLDER AREA (TIN LEAD OPTION): 2,5µm MIN. Sn-Pb
SOLDER AREA (LEAD FREE OPTION): 2,5µm MIN. PURE TIN
- TRUE POSITION IS A FREE GRID TO THE PIN PATTERN ITSELF.
- IF LEAD FREE P/N. THE HOUSING WILL WITHSTAND EXPOSURE TO 260°C PEAK TEMPERATURE FOR 10 SECONDS IN A WAVE SOLDER APPLICATION WITH A 1.00MM MINIMUM THICK CIRCUIT BOARD.
- LEAD FREE PRODUCT MEETS EUROPEAN UNION DIRECTIVES AND OTHER COUNTRY REGULATIONS AS DISCRIBLED IN GS-22-008
- IF LEAD FREE P/N. PACKAGING MEETS GS-14-920 SPECIFICATION



DETAIL-X (SCALE 15:1)

PIN NO.	36 , 67	1 , 17 , 34 35 , 51 , 68	OTHERS
DIM-L	3,50 ± 0,10	5,00 ± 0,10	4,25 ± 0,10

mat'l. code				tolerances unless otherwise specified		CUSTOMER COPY		 www.fciconnect.com	
ltr	ecn no	dr	date	linear	±.3		projection	title 68P EJECTOR HEADER ASSEMBLY FOR PCMCIA/JEIDA TYPE-I/II/III HEADER ASSEMBLY	
E					angles	0° ±2'		product family PCMCIA code NT	
				dr	WB JIANG	11/26/04	 N.T.S.	size dwg no	
				enr	WB JIANG	11/26/04		A 92856	
				chr	WB JIANG	11/26/04		sheet 17 of	
				appd	JASON ZHOU	11/26/04			
sheet index	revision sheet							cage code	

PDM: Rev:E

STATUS: Released
2006 Printed: Feb 20, 2010