


Single Phase Bridge (Power Modules), 25/35 A


GBPC...A

GBPC...W

FEATURES

- Universal, 3 way terminals: push-on, wrap around or solder
- High thermal conductivity package, electrically insulated case
- Positive polarity symbol molded on the plastic case
- Center hole fixing
- Glass passivated diode chips
- Excellent power/volume ratio
- Nickel plated terminals solderable using lead (Pb)-free solder; Solder Alloy Sn/Ag/Cu (SAC305); Solder temperature 260 to 275 °C
- Wire lead version available
- UL E300359 approved 
- RoHS compliant
- Designed and qualified for industrial and consumer level



PRODUCT SUMMARY

I_o	25/35 A
-------	---------

DESCRIPTION/APPLICATIONS

A range of extremely compact, encapsulated single phase bridge rectifiers offering efficient and reliable operation. They are intended for use in general purpose and instrumentation applications

MAJOR RATINGS AND CHARACTERISTICS

SYMBOL	CHARACTERISTICS	GBPC25	GBPC35	UNITS
I_o		25	35	A
	T_c	60	55	°C
I_{FSM}	50 Hz	400	475	A
	60 Hz	420	500	
I^2t	50 Hz	790	1130	A ² s
	60 Hz	725	1030	
V_{RRM}	Range	200 to 1200		V
T_J		- 55 to 150		°C

ELECTRICAL SPECIFICATIONS

VOLTAGE RATINGS					
TYPE NUMBER	VOLTAGE CODE	V_{RRM} , MAXIMUM REPETITIVE PEAK AC REVERSE VOLTAGE $T_J = T_J$ MAXIMUM V	V_{RSM} , MAXIMUM NON-REPETITIVE PEAK AC REVERSE VOLTAGE $T_J = T_J$ MAXIMUM V	I_{RRM} MAXIMUM AT RATED V_{RRM} $T_J = T_J$ MAXIMUM mA	I_{RRM} MAXIMUM DC REVERSE CURRENT AT $T_J = 125^\circ\text{C}$ μA
GBPC25/35..A ⁽¹⁾ GBPC25/35..W	02	200	275	2	500
	04	400	500		
	06	600	725		
	08	800	900		
	10	1000	1100		
	12	1200	1300		

Note

⁽¹⁾ See Ordering Information table at the end of datasheet

FORWARD CONDUCTION							
PARAMETER	SYMBOL	TEST CONDITIONS			GBPC25	GBPC35	UNITS
Maximum DC output current at case temperature	I_O	Resistive or inductive load			25	35	A
		Capacitive load			20	28	
					60	55	$^\circ\text{C}$
Maximum peak, one-cycle non-repetitive forward current	I_{FSM}	t = 10 ms	No voltage reappplied	Initial $T_J = T_J$ maximum	400	475	A
		t = 8.3 ms			420	500	
		t = 10 ms	100 % V_{RRM} reappplied		335	400	
		t = 8.3 ms			350	420	
Maximum I^2t for fusing	I^2t	t = 10 ms	No voltage reappplied		790	1130	A^2s
		t = 8.3 ms			725	1030	
		t = 10 ms	100 % V_{RRM} reappplied		560	800	
		t = 8.3 ms			512	730	
Maximum $I^2\sqrt{t}$ for fusing	$I^2\sqrt{t}$	I^2t for time $t_x = I^2\sqrt{t} \times \sqrt{t_x}$; $0.1 \leq t_x \leq 10$ ms, $V_{RRM} = 0$ V			7.9	11.3	$\text{kA}^2\sqrt{\text{s}}$
Low level of threshold voltage	$V_{F(TO)1}$	$(16.7\% \times \pi \times I_{F(AV)} < I < \pi \times I_{F(AV)})$, T_J maximum			0.76	0.77	V
High level of threshold voltage	$V_{F(TO)2}$	$(I > \pi \times I_{F(AV)})$, T_J maximum			0.89	0.92	
Low level forward slope resistance	r_{f1}	$(16.7\% \times \pi \times I_{F(AV)} < I < \pi \times I_{F(AV)})$, T_J maximum			8.2	4.852	$\text{m}\Omega$
High level forward slope resistance	r_{f2}	$(I > \pi \times I_{F(AV)})$, T_J maximum			6.8	3.867	
Maximum forward voltage drop	V_{FM}	$T_J = 25^\circ\text{C}$, $I_{FM} = I_{Favg}$ (arm)			1.1		V
Maximum DC reverse current	I_{RRM}	$T_J = 25^\circ\text{C}$, per diode at V_{RRM}			5.0		μA
RMS isolation voltage base plate	V_{INS}	f = 50 Hz, t = 1 s			2700		V



THERMAL AND MECHANICAL SPECIFICATIONS					
PARAMETER	SYMBOL	TEST CONDITIONS	GBPC25	GBPC35	UNITS
Junction and storage temperature range	T_J, T_{Stg}		- 55 to 150		°C
Maximum thermal resistance, junction to case per bridge	R_{thJC}	DC operation	1.7	1.4	K/W
Maximum thermal resistance, case to heatsink	R_{thCS}	Mounting surface, smooth, flat and greased	0.2		
Approximate weight			16		g
Mounting torque $\pm 10\%$		Bridge to heatsink	2.0		N · m (lbf · in)

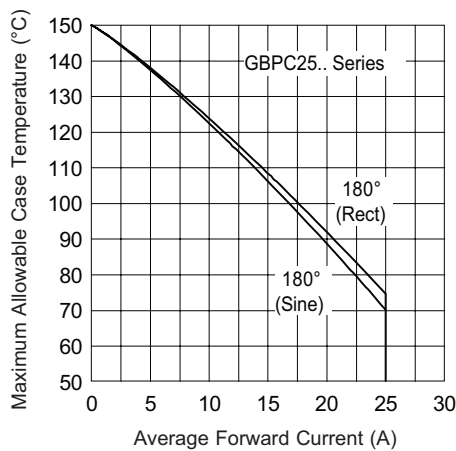


Fig. 1 - Current Ratings Characteristics

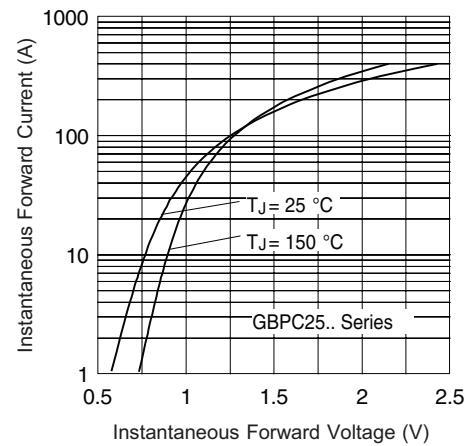


Fig. 2 - Forward Voltage Drop Characteristics

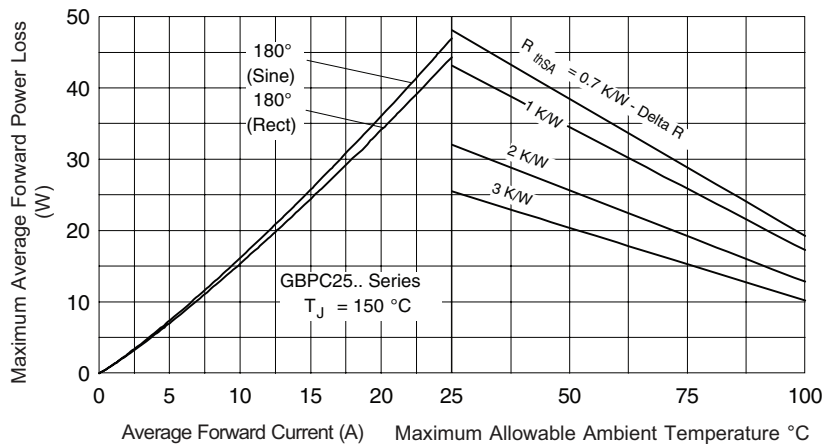


Fig. 3 - Total Power Loss Characteristics

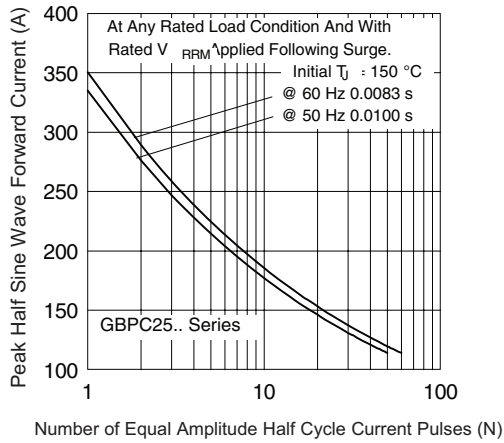


Fig. 4 - Maximum Non-Repetitive Surge Current

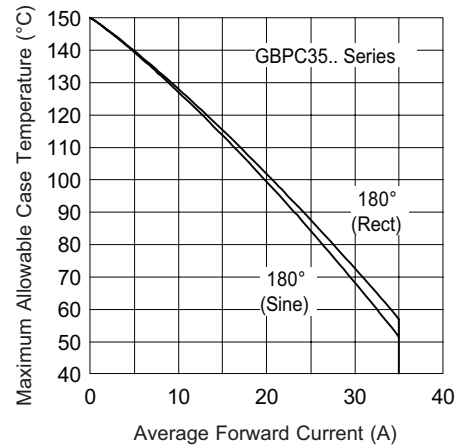


Fig. 6 - Current Ratings Characteristics

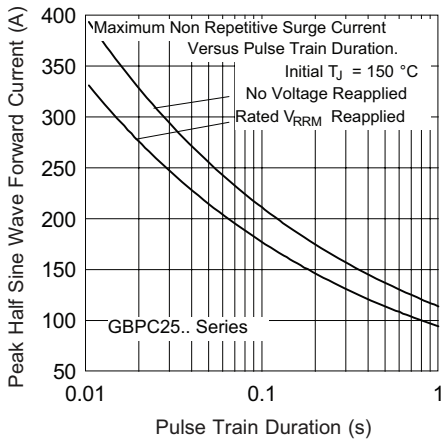


Fig. 5 - Maximum Non-Repetitive Surge Current

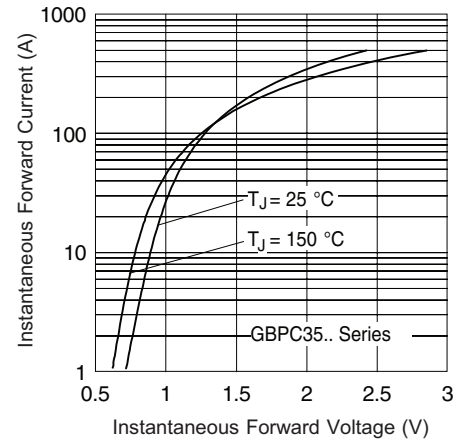


Fig. 7 - Forward Voltage Drop Characteristics

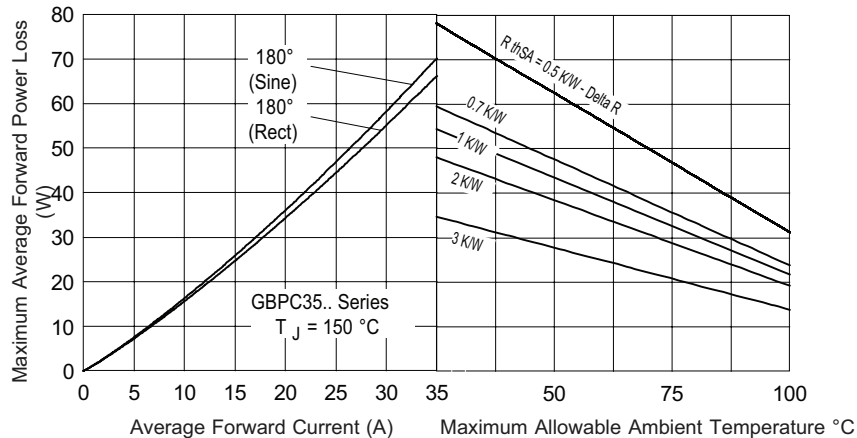


Fig. 8 - Total Power Loss Characteristics

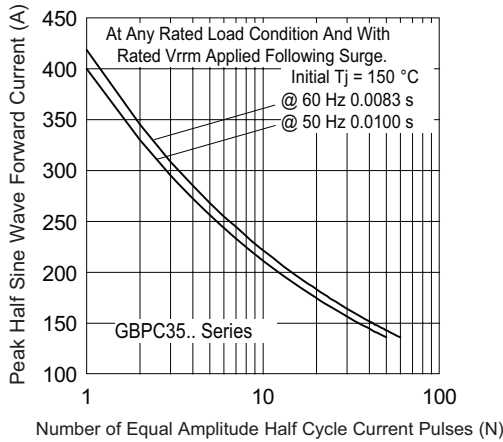


Fig. 9 - Maximum Non-Repetitive Surge Current

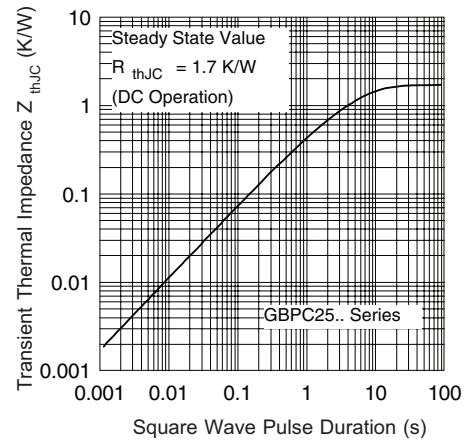
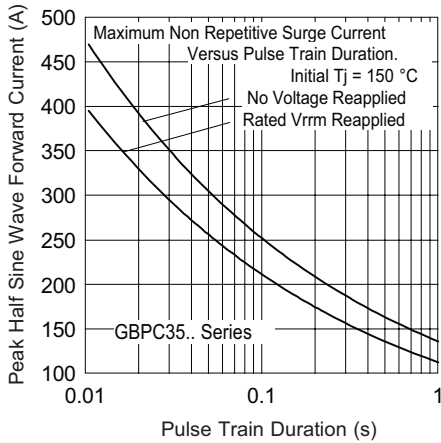
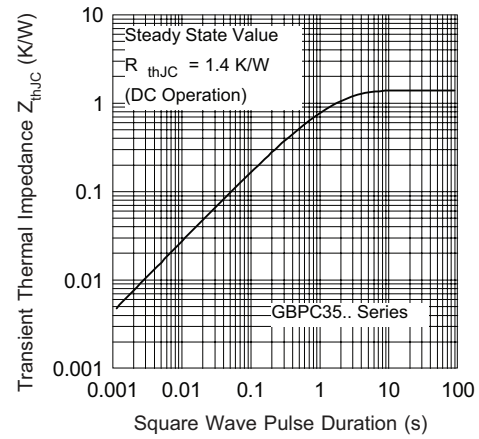

 Fig. 11 - Thermal Impedance Z_{thJC} Characteristic


Fig. 10 - Maximum Non-Repetitive Surge Current


 Fig. 12 - Thermal Impedance Z_{thJC} Characteristic

ORDERING INFORMATION TABLE

Device code	GBPC	35	12	A
	①	②	③	④

- ① - Circuit configuration:
Single phase bridge coding
- ② - Current rating code 25 = 25 A (average)
35 = 35 A (average)
- ③ - Voltage code x 100 = V_{RRM}
- ④ - Diode bridge rectifier:
 - A = Standard fast-on terminal
 - W = Wire lead

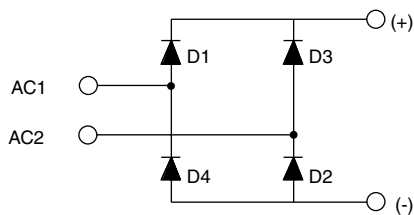
GBPC.. Series

Vishay High Power Products

Single Phase Bridge
(Power Modules), 25/35 A



CIRCUIT CONFIGURATION

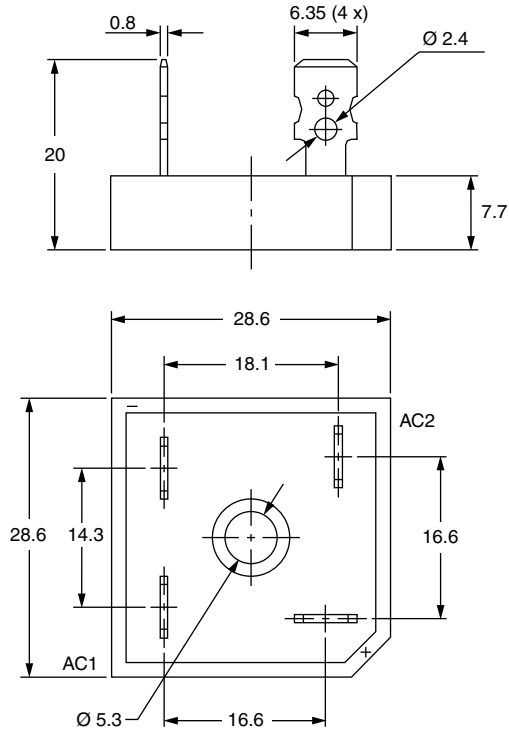


LINKS TO RELATED DOCUMENTS

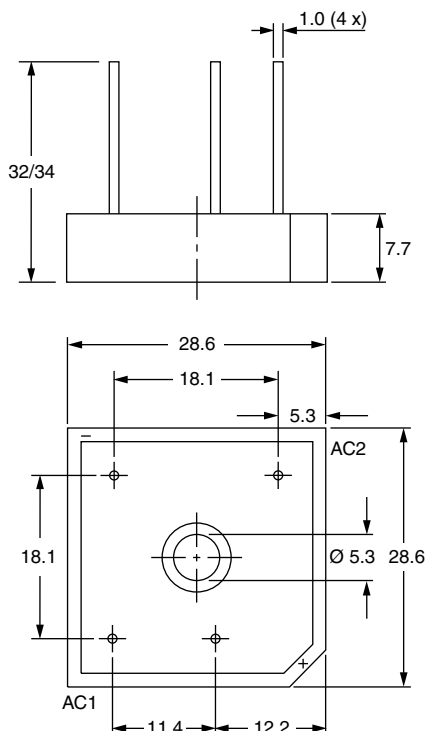
LINKS TO RELATED DOCUMENTS	
Dimensions	http://www.vishay.com/doc?95331

GBPC

DIMENSIONS FOR GBPC...A in millimeters



DIMENSIONS FOR GBPC...W in millimeters





Disclaimer

ALL PRODUCT, PRODUCT SPECIFICATIONS AND DATA ARE SUBJECT TO CHANGE WITHOUT NOTICE TO IMPROVE RELIABILITY, FUNCTION OR DESIGN OR OTHERWISE.

Vishay Intertechnology, Inc., its affiliates, agents, and employees, and all persons acting on its or their behalf (collectively, "Vishay"), disclaim any and all liability for any errors, inaccuracies or incompleteness contained in any datasheet or in any other disclosure relating to any product.

Vishay makes no warranty, representation or guarantee regarding the suitability of the products for any particular purpose or the continuing production of any product. To the maximum extent permitted by applicable law, Vishay disclaims (i) any and all liability arising out of the application or use of any product, (ii) any and all liability, including without limitation special, consequential or incidental damages, and (iii) any and all implied warranties, including warranties of fitness for particular purpose, non-infringement and merchantability.

Statements regarding the suitability of products for certain types of applications are based on Vishay's knowledge of typical requirements that are often placed on Vishay products in generic applications. Such statements are not binding statements about the suitability of products for a particular application. It is the customer's responsibility to validate that a particular product with the properties described in the product specification is suitable for use in a particular application. Parameters provided in datasheets and/or specifications may vary in different applications and performance may vary over time. All operating parameters, including typical parameters, must be validated for each customer application by the customer's technical experts. Product specifications do not expand or otherwise modify Vishay's terms and conditions of purchase, including but not limited to the warranty expressed therein.

Except as expressly indicated in writing, Vishay products are not designed for use in medical, life-saving, or life-sustaining applications or for any other application in which the failure of the Vishay product could result in personal injury or death. Customers using or selling Vishay products not expressly indicated for use in such applications do so at their own risk. Please contact authorized Vishay personnel to obtain written terms and conditions regarding products designed for such applications.

No license, express or implied, by estoppel or otherwise, to any intellectual property rights is granted by this document or by any conduct of Vishay. Product names and markings noted herein may be trademarks of their respective owners.

Material Category Policy

Vishay Intertechnology, Inc. hereby certifies that all its products that are identified as RoHS-Compliant fulfill the definitions and restrictions defined under Directive 2011/65/EU of The European Parliament and of the Council of June 8, 2011 on the restriction of the use of certain hazardous substances in electrical and electronic equipment (EEE) - recast, unless otherwise specified as non-compliant.

Please note that some Vishay documentation may still make reference to RoHS Directive 2002/95/EC. We confirm that all the products identified as being compliant to Directive 2002/95/EC conform to Directive 2011/65/EU.

Vishay Intertechnology, Inc. hereby certifies that all its products that are identified as Halogen-Free follow Halogen-Free requirements as per JEDEC JS709A standards. Please note that some Vishay documentation may still make reference to the IEC 61249-2-21 definition. We confirm that all the products identified as being compliant to IEC 61249-2-21 conform to JEDEC JS709A standards.