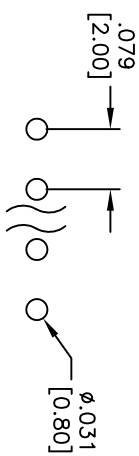
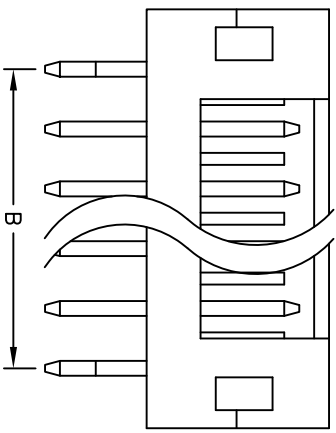
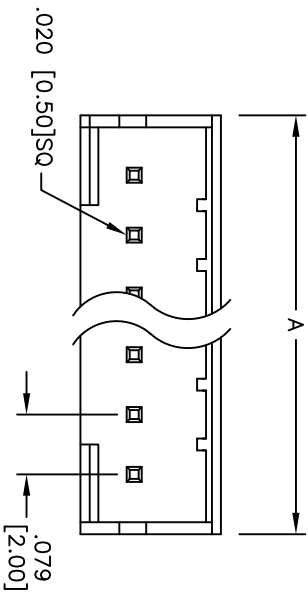
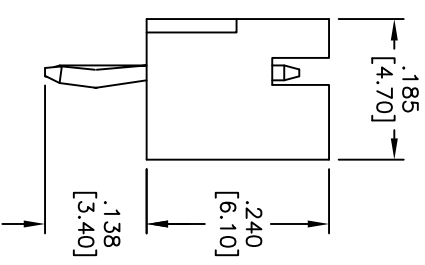


APPROVED: _____
 DATE: _____ TITLE: _____

Rev	AWO #	Description	Date	Appr
-		RELEASED	4/6/05	
A		REDRAWN	4/13/09	



RECOMMENDED PCB LAYOUT



SPECIFICATIONS:

Material: Nylon 66, rated UL 94V-0

Insulator color: Brown

Contacts: Brass

Plating:

Tin over Copper underplate overall

Electrical:

Operating voltage: 100 VAC max

Current rating: 1 Amp max

Contact resistance: 20 mohms max

Insulation resistance: 1,000 Mohms min @ 500 VDC

Dielectric withstanding voltage: 800 VAC for 1 minute

Temperature Rating:

Operating temperature: -25°C to +85°C

Environmental:

Lead free, RoHS compliant



Positions: 2 thru 15
 A = .079 [2.00] x No. of Positions + .079 [2.00]
 B = .079 [2.00] x No. of Spaces

UNLESS OTHERWISE SPECIFIED
 ALL DIMENSIONS ARE INCHES [MM]
 TOLERANCES: EXCEPT AS NOTED
 INCHES HOLE SIZE
 .X ± .10 ØXX ± .10
 .XX ± .020 ØXXX ± .015
 .XXX ± .015 ØXXXX ± .010

ADAM TECH
 909 Rahway Avenue, Union, NJ 07083
 Phone: 908-687-5000 Fax: 908-687-5710
 TITLE: .079 [2.00] SHROUNDED HEADER
 STRAIGHT, PCB

DRAWN	SS	4/6/05
CHECKED		
APPROVED		

SIZE	PART NO.	REV.
X	2SH-B-XX-TS	A
REF: S00099T	SCALE: NTS	SHEET 1 OF 1