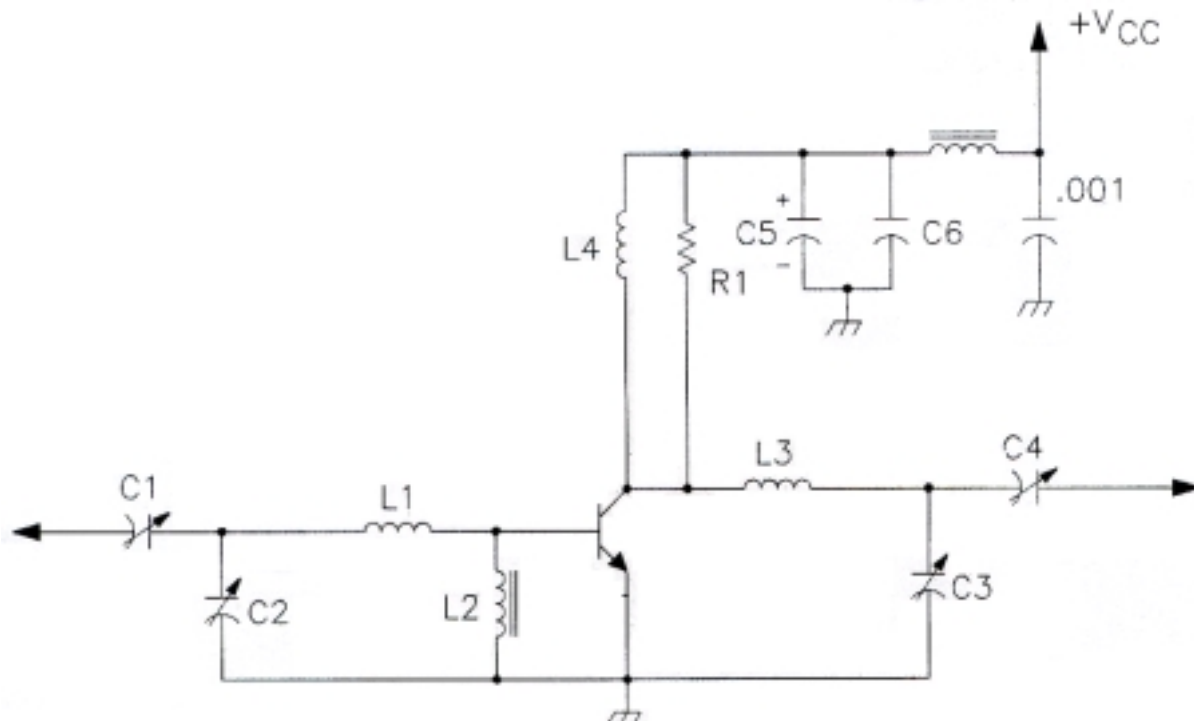




## TEST CIRCUIT



- |       |                                   |       |  |
|-------|-----------------------------------|-------|--|
| C1    | : 24 - 200pF Arco 425             | L1    | : 4 Turns, #16 AWG, Tinned, 0.40" I.D.                       |
| C2,C4 | : 50 - 380pF Arco 465             | L2,L5 | : 1 Turn, #22 AWG, Tinned, formed with VK-200 #4B Ferroxcube |
| C3    | : 9 - 180pF Arco 463              | L4    | : 17 Turns, #18 Enameled Wire Wrapped Around R1              |
| C5    | : 10 $\mu$ F, Electrolytic, 35Vdc | R1    | : 390 $\Omega$ Resistor (2 Watt)                             |
| C6    | : 0.01 $\mu$ F, 100V, Ceramic     |       |  |

## SAFE OPERATING AREA

