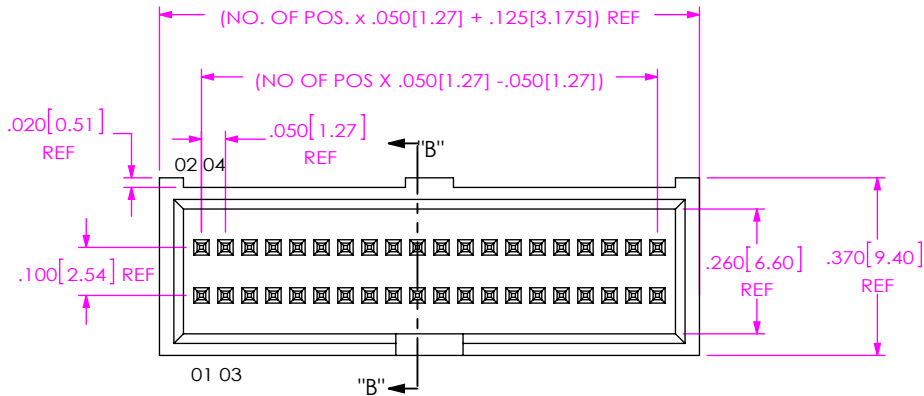


DO NOT SCALE FROM THIS PRINT

ZML-1XX-XX-XX-X-XXX-SM



NO OF POSITIONS
-05 THRU -50

ROW SPECIFICATION
-SM: SURFACE MOUNT

LEAD STYLE
SEE TABLE 2

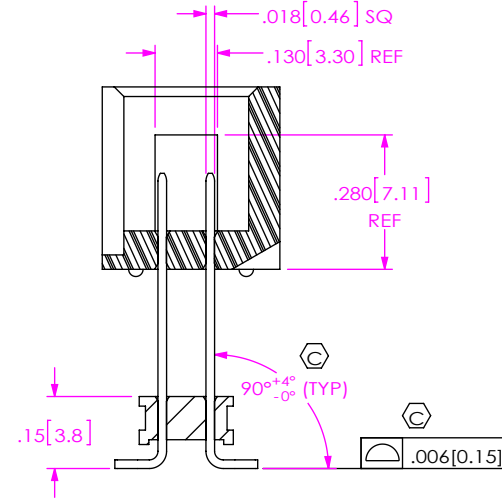
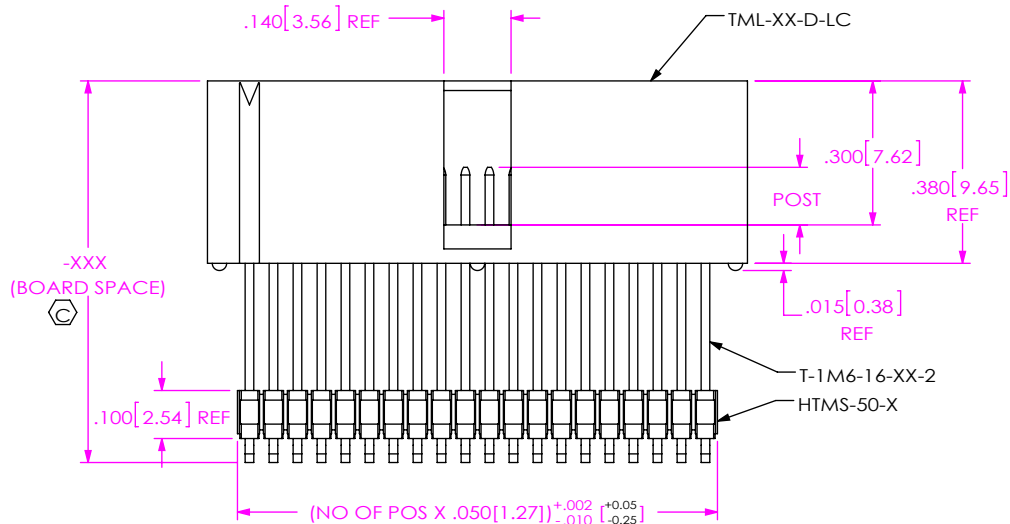
BOARD SPACE
-XXX= BOARD SPACE
-53 STYLE: .530 MIN, .795 MAX
-54 STYLE: .530 MIN, .685 MAX
*-55 STYLE: .530 MIN, .745 MAX

PLATING SPECIFICATION

- G: 10µ" GOLD IN CONTACT AREA, 3µ" GOLD ON TAIL
- T: MATTE TIN CONTACT AND TAIL
- S: 30µ" SELECTIVE GOLD IN CONTACT AREA, MATTE TIN ON TAIL
- H: 30µ" GOLD IN CONTACT AREA, 3µ" GOLD ON TAIL
- TM: MATTE TIN CONTACT AND TAIL
- SM: 30µ" SELECTIVE GOLD IN CONTACT AREA, MATTE TIN ON TAIL
- L: 10µ" LIGHT SELECTIVE GOLD ON CONTACT AREA, MATTE TIN ON TAIL

ROW SPECIFICATION
-D: DOUBLE
(USE TML-XX-D & HTMS-50-D)

* = NOT ENGINEERING APPROVED



SECTION "B"- "B"

TABLE 2

LEAD STYLE	POST
-53	.120 [3.05]
-54	.230 [5.84]
*-55	.170 [4.32]

NOTES:

1. TAILS TO BE SHEARED TO MEET DIMENSION SHOWN.
2. © REPRESENTS A CRITICAL DIMENSION.
3. FOR ADDED MECHANICAL STABILITY, SAMTEC RECOMMENDS MECHANICAL BOARD SPACERS BE USED IN APPLICATIONS WITH GOLD OR SELECTIVE GOLD PLATED CONNECTORS. CONTACT IPG@SAMTEC.COM FOR MORE INFORMATION.

UNLESS OTHERWISE SPECIFIED, DIMENSIONS ARE IN INCHES.
TOLERANCES ARE:
DECIMALS ANGLES
.XX: ±.01 [0.3] 2°
.XXX: ±.005 [0.13]
.XXXX: ±.0020 [0.051]

PROPRIETARY NOTE
THIS DOCUMENT CONTAINS CONFIDENTIAL AND PROPRIETARY INFORMATION AND ALL DESIGN, MANUFACTURING, REPRODUCTION, USE, PATENT RIGHTS AND SALES RIGHTS ARE EXPRESSLY RESERVED BY SAMTEC, INC. THIS DOCUMENT SHALL NOT BE DISCLOSED, IN WHOLE OR PART, TO ANY UNAUTHORIZED PERSON OR ENTITY NOR REPRODUCED, TRANSFERRED OR INCORPORATED IN ANY OTHER PROJECT IN ANY MANNER WITHOUT THE EXPRESS WRITTEN CONSENT OF SAMTEC, INC.



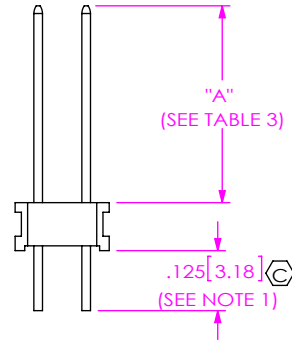
520 PARK EAST BLVD, NEW ALBANY, IN 47150
PHONE: 812-944-6733 FAX: 812-948-5047
e-Mail: info@SAMTEC.com code 55322

MATERIAL: DO NOT SCALE DRAWING SHEET SCALE: 5:2
INSULATOR: VECTRA E130, COLOR: BLACK
TERMINAL: PHOS BRONZE

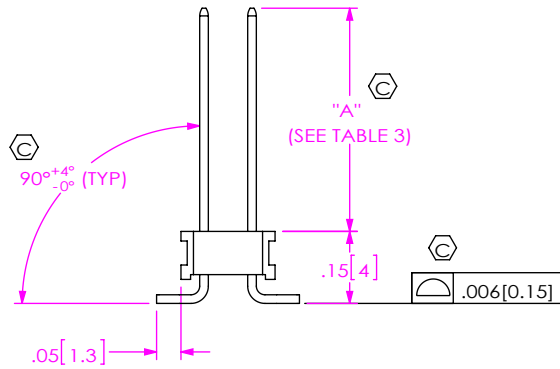
DESCRIPTION: .050 x .100 SMT SHROUDED HEADER
DWG. NO. ZML-1XX-XX-XX-X-XXX-SM

TABLE 3	
LEAD STYLE	"A"
-53	-XXX - .330[8.38]
-54	-XXX - .220[5.59]
*-55	-XXX - .280[7.11]

-XXX = BOARD SPACE

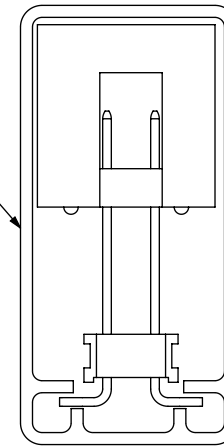


IN-PROCESS 1



IN-PROCESS 2

PT-1-24-03-60
USE 2 TP-29



PACKAGING VIEW

PROPRIETARY NOTE

THIS DOCUMENT CONTAINS CONFIDENTIAL AND PROPRIETARY INFORMATION AND ALL DESIGN, MANUFACTURING, REPRODUCTION, USE, PATENT RIGHTS AND SALES RIGHTS ARE EXPRESSLY RESERVED BY SAMTEC, INC. THIS DOCUMENT SHALL NOT BE DISCLOSED, IN WHOLE OR PART, TO ANY UNAUTHORIZED PERSON OR ENTITY NOR REPRODUCED, TRANSFERRED OR INCORPORATED IN ANY OTHER PROJECT IN ANY MANNER WITHOUT THE EXPRESS WRITTEN CONSENT OF SAMTEC, INC.

DO NOT SCALE DRAWING

SHEET SCALE: 5:2



520 PARK EAST BLVD, NEW ALBANY, IN 47150
PHONE: 812-944-6733 FAX: 812-948-5047
e-Mail info@SAMTEC.com code 55322

DESCRIPTION: .050 x .100 SMT SHROUDED HEADER

DWG. NO. ZML-1XX-XX-XX-X-XXX-SM

BY: DEAN P 03/28/1996 SHEET 2 OF 2