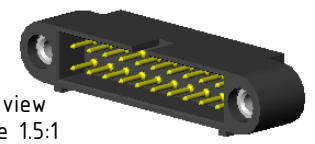
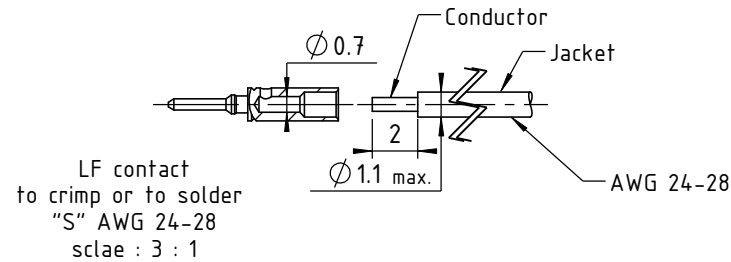
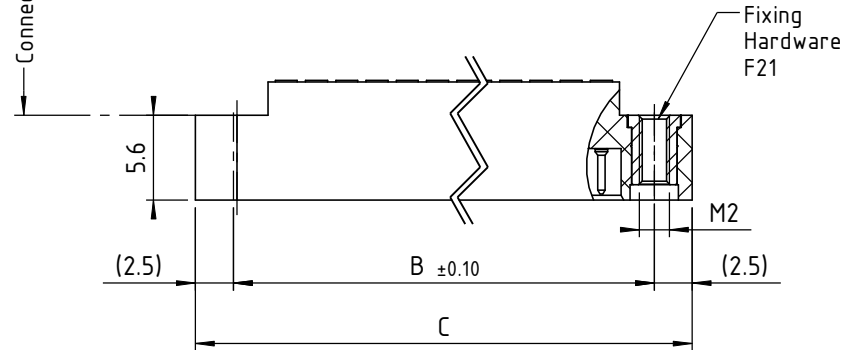
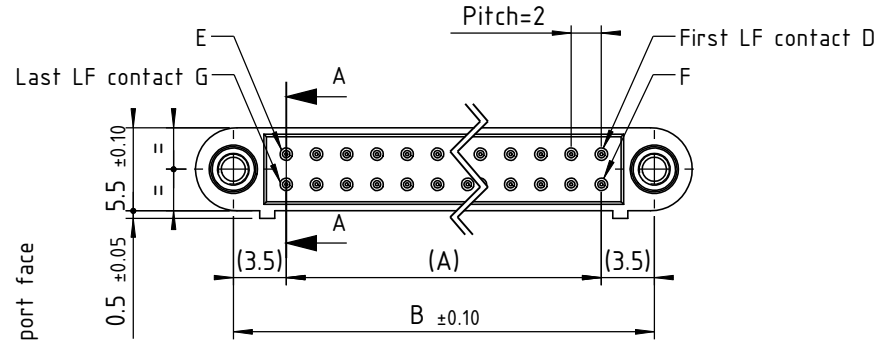
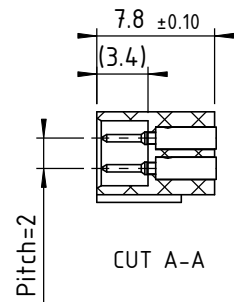


D C B A



TECHNICALS FEATURES

MATERIAL

INSULATOR : Special PPS (Polyphenylene Sulfide Fibreglass filled thermoplastic) UL 94-V0

- Radiation resistance
- No humidity absorption
- Oxygen free

Note : PPS characteristics are recognized for space applications

CRIMPING SIGNAL CONTACTS :

Male :
• Body Copper alloy / Ni + Au 1µ

FIXING HARDWARE :

- Jackscrew : Stainless steel

ELECTRICAL for LF Contacts

- All contacts 3 A max. @ 25°C
2.2 A max. @ 85°C
- Working voltage (sea level) Tested at 800 V DC
- Proof voltage Tested at 1200 V DC
- Contact resistance (initially) max. 10 mΩ
- Insulation resistance 1000 MΩ min

MECHANICAL for LF Contacts

- Mechanical operations 500 cycles min. up to 2500.
- Contact insertion and withdrawal force 2 N max. / 0.2 N min. per contact
- Contact retention in insulator 10 N min.
- Contact replacement in insulator 3 cycles

ENVIRONMENTAL

- Temperature range From -60°C to +260°C
- Vibration severity 0.75mm, 10 g RMS 6 hours long random with superimposed sinusoid. No intermittencies measured when using an H.S.L.I. (High Speed Logic Interrupt) detector with a trip threshold of 2 ns.
- Shock severity 100g for 6 ms
- Solvent resistance HcFc 141 bMGX (ATOCHEM) solvent
- Salt spray test 96 hrs
- Humidity test 56 days @ 90% humidity

Crimping following cable instruction ICLF01
Marking as referenced in the CMM catalogue pages 12 & 13

CONNECTOR SERIES 220 MALE

LF contacts number mm	Distance in mm between axes		Length in mm	LF contacts reference mark number			
	A	B		C	D	E	F
04	2	9	14	1	2	3	4
06	4	11	16	1	3	4	6
08	6	13	18	1	4	5	8
10	8	15	20	1	5	6	10
12	10	17	22	1	6	7	12
14	12	19	24	1	7	8	14
16	14	21	26	1	8	9	16
18	16	23	28	1	9	10	18
20	18	25	30	1	10	11	20
22	20	27	32	1	11	12	22
24	22	29	34	1	12	13	24
26	24	31	36	1	13	14	26
28	26	33	38	1	14	15	28
30	28	35	40	1	15	16	30
32	30	37	42	1	16	17	32
34	32	39	44	1	17	18	34
36	34	41	46	1	18	19	36
38	36	43	48	1	19	20	38
40	38	45	50	1	20	21	40
42	40	47	52	1	21	22	42
44	42	49	54	1	22	23	44
46	44	51	56	1	23	24	46
48	46	53	58	1	24	25	48
50	48	55	60	1	25	26	50
52	50	57	62	1	26	27	52
54	52	59	64	1	27	28	54
56	54	61	66	1	28	29	56
58	56	63	68	1	29	30	58
60	58	65	70	1	30	31	60

Tools recommended	
LF contacts insertion & withdrawal tool	P/N C12935
Recommended hand crimp tool	P/N MH800
Recommended positionner K 1692	P/N C12929
AWG24 crimp tool setting	Position 7
AWG26 & AWG28 crimp tool setting	Position 6

nicomatic
www.nicomatic.com
Mail : nicomatic@nicomatic.fr
Tel : +33 (0)4.50.36.13.85

2	21/09/09	G.C.	E.M.	D.Z.
Iss	Date	Drawn	Checked	Approved

Item : Connector CMM220 male to crimp AWG 24-28, nn LF contacts, F21

This document and drawings, sketches, and schematic drawings are the property of the NICOMATIC company, and no parts thereof may be reproduced and used without the written consent of the owner. Law dated 11.03.1902

Catalogue Reference : **221SnnF21**

	General tolerance ±0.2	Scale 2:1	Page 1/1
--	------------------------	-----------	----------



4

3

2

1

4

3

2

1

D A4