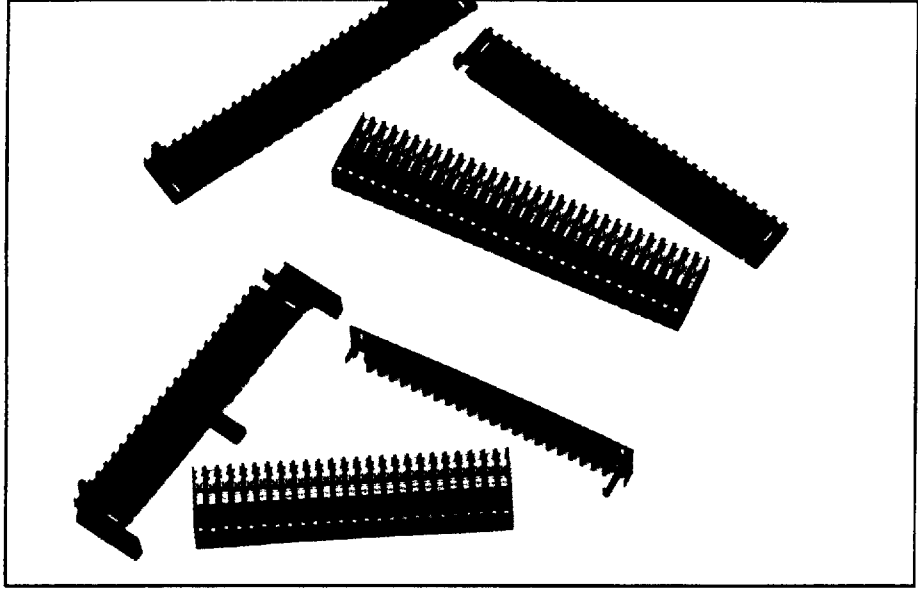


# Amphenol® discrete wire IDC receptacles – 216 series

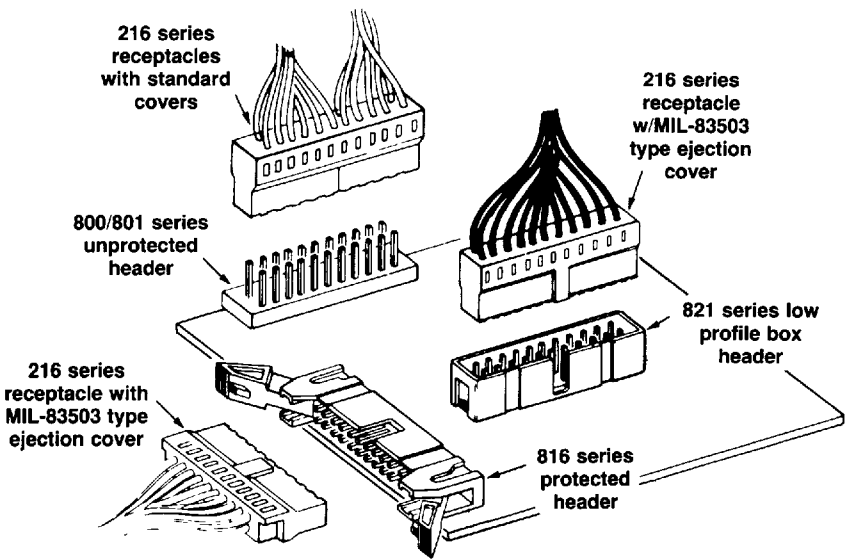


## description

Amphenol 216 series connectors feature preloaded discrete IDC receptacle contacts with an easy-to-use line of termination tooling that fulfills all production requirements. Fast, four-point solderless termination reduces risk of assembly error and ensures reliable connections.

Connector housings are end-to-end stackable and can be used within one pair of snap-on covers. This feature provides a variety of combinations to meet cable-to-board interconnection requirements.

## application examples



## benefits

- Preloaded IDC discrete receptacle contacts
- Duplex plated contacts
- Snap-on standard profile, and MIL-83503 type hermaphroditic covers
- End-to-end stackable
- Replaceable contacts

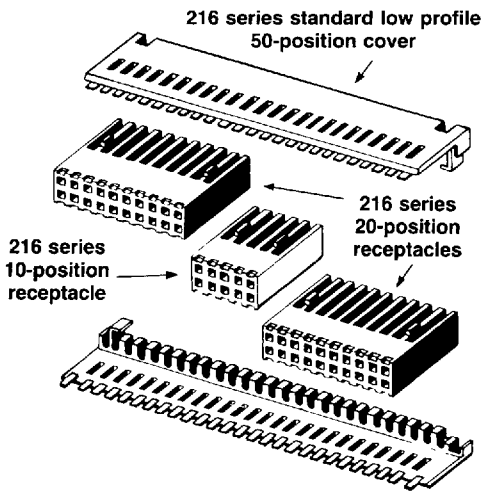
## characteristics

### Physical

Contact material: Copper alloy  
 Contact plating: gold over Nickel engagement area; Tin/Lead IDC area  
 Contact spacing: .100" typical  
 Housing and cover material: Glass-filled thermoplastic; UL 94V-O/UL 94-5V; black  
 Operating temperature: -55°C to +105°C (-67°F to +221°F)

### Electrical

Insulation resistance: 5000 megaohms min. initial  
 Dielectric withstanding voltage: 900V (RMS) at sea level  
 200V (RMS) at 70,000 ft.  
 Termination resistance: 0.015 ohms max. initial  
 0.020 ohms max. final  
 Current rating: 3 amps

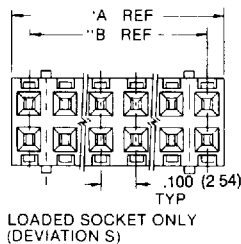


# Amphenol® discrete wire IDC receptacles – 216 series

## dimensions

(Loaded socket only)

Number of Contacts	Dimensions—inches (mm)	
	"A" Ref.	"B" Ref.
6	.298 (7,57)	.200 (5,08)
8	.398 (10,11)	.300 (7,62)
10	.498 (12,65)	.400 (10,16)
12	.598 (15,19)	.500 (12,70)
14	.698 (17,73)	.600 (15,24)
16	.798 (20,27)	.700 (17,78)
18	.898 (22,81)	.800 (20,32)
20	.998 (25,35)	.900 (22,86)
22	1.098 (27,89)	1.000 (25,40)
24	1.198 (30,43)	1.100 (27,94)
26	1.298 (32,97)	1.200 (30,48)
28	1.398 (35,51)	1.300 (33,02)
30	1.498 (38,05)	1.400 (35,56)
32	1.598 (40,59)	1.500 (38,10)
34	1.698 (43,13)	1.600 (40,64)
36	1.798 (45,67)	1.700 (43,18)
38	1.898 (48,21)	1.800 (45,72)
40	1.998 (50,75)	1.900 (48,26)
42	2.098 (53,29)	2.000 (50,80)
44	2.198 (55,83)	2.100 (53,34)
46	2.298 (58,37)	2.200 (55,88)
48	2.398 (60,91)	2.300 (58,42)
50	2.498 (63,45)	2.400 (60,96)
52	2.598 (65,99)	2.500 (63,50)
54	2.698 (68,53)	2.600 (66,04)
56	2.798 (71,07)	2.700 (68,58)
58	2.898 (73,61)	2.800 (71,12)
60	2.998 (76,15)	2.900 (73,66)
62	3.098 (78,69)	3.000 (76,20)
64	3.198 (81,23)	3.100 (78,74)
66	3.298 (83,77)	3.200 (81,28)
68	3.398 (86,31)	3.300 (83,82)
70	3.498 (88,85)	3.400 (86,36)
72	3.598 (91,39)	3.500 (88,90)



LOADED SOCKET ONLY  
(DEVIATION S)



## order information

Loaded socket only

**216 - A XXX S - XX X 00**

Mass termination sockets

Number of contacts

Deviations

Code Description  
**S** Consists of one loaded socket connector

### Contact Characteristics

Code AWG  
**A** 20-22  
**B** 24-26  
**C** 28-30

### Plating

Code Description  
**AF** Nickel underplate, 15μ inches Gold engagement area, Tin/Lead tails  
**AM** Nickel underplate, 30μ inches Gold engagement area, Tin/Lead tails

## accessories

Replacement Contacts (Loose)

**216 - 5XX - XX**

### Contact Characteristics

Code Description  
**00** 100 contacts for 20-22 gauge wire  
**01** 100 contacts for 24-26 gauge wire  
**02** 100 contacts for 28-30 gauge wire

### Plating

Code Description  
**01** Nickel underplate, 15μ inches Gold engagement area, Tin/Lead tails  
**02** Nickel underplate, 30μ inches Gold engagement area, Tin/Lead tails

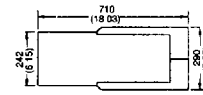
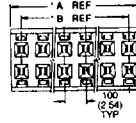
Blue type indicates standard, available product.

# Amphenol® discrete wire IDC receptacles with low profile covers — 216 series

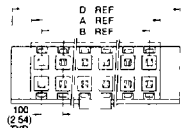
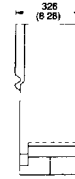
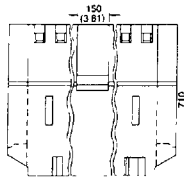
## dimensions

(Loaded socket with cover options)

Number of Contacts	Dimensions—inches (mm)		
	"A" Ref.	"B" Ref.	"D" Ref.
6	.298 (7,57)	.200 (5,08)	n/a
8	.398 (10,11)	.300 (7,62)	.590 (14,99)
10	.498 (12,65)	.400 (10,16)	.690 (17,53)
12	.598 (15,19)	.500 (12,70)	.790 (20,07)
14	.698 (17,73)	.600 (15,24)	.890 (22,61)
16	.798 (20,27)	.700 (17,78)	.990 (25,15)
18	.898 (22,81)	.800 (20,32)	1.090 (27,69)
20	.998 (25,35)	.900 (22,86)	1.190 (30,23)
22	1.098 (27,89)	1.000 (25,40)	1.290 (32,77)
24	1.198 (30,43)	1.100 (27,94)	1.390 (35,31)
26	1.298 (32,97)	1.200 (30,48)	1.490 (37,85)
28	1.398 (35,51)	1.300 (33,02)	1.590 (40,39)
30	1.490 (38,05)	1.400 (35,56)	1.690 (42,93)
32	1.598 (40,59)	1.500 (38,10)	1.790 (45,47)
34	1.698 (43,13)	1.600 (40,64)	1.890 (48,01)
36	1.798 (45,67)	1.700 (43,18)	1.990 (50,55)
38	1.898 (48,21)	1.800 (45,72)	2.090 (53,09)
40	1.998 (50,75)	1.900 (48,26)	2.190 (55,63)
42	2.098 (53,29)	2.000 (50,80)	2.290 (58,17)
44	2.198 (55,83)	2.100 (53,34)	2.390 (60,71)
46	2.298 (58,37)	2.200 (55,88)	2.490 (63,25)
48	2.398 (60,91)	2.300 (58,42)	2.590 (65,79)
50	2.498 (63,45)	2.400 (60,96)	2.690 (68,33)
52	2.598 (65,99)	2.500 (63,50)	2.790 (70,87)
54	2.698 (68,53)	2.600 (66,04)	2.890 (73,41)
56	2.798 (71,07)	2.700 (68,58)	2.990 (75,95)
58	2.898 (73,61)	2.800 (71,12)	3.090 (78,49)
60	2.998 (76,15)	2.900 (73,66)	3.190 (81,03)
62	3.098 (78,69)	3.000 (76,20)	3.290 (83,57)
64	3.198 (81,23)	3.100 (78,74)	3.390 (86,11)
66	3.298 (83,77)	3.200 (81,28)	3.490 (88,65)
68	3.398 (86,31)	3.300 (83,82)	3.590 (91,19)
70	3.498 (88,85)	3.400 (86,36)	3.690 (93,73)
72	3.598 (91,39)	3.500 (88,90)	3.790 (96,27)



LOADED SOCKET W/STANDARD COVERS (DEVIATION C)



LOADED SOCKET W/EJECTION COVER FOR USE WITH MIL-TYPE 83503 HEADER (DEVIATION E)

## order information

Loaded socket with cover options

**216 - A XXX X - XX X 00**

Mass termination sockets

Number of contacts

### Deviations

Code	Description
C	Consists of one loaded socket connector and a set of standard covers
E	Consists of one loaded socket connector and a set of ejection covers

### Plating

Code	Description
AF	Nickel underplate, 15µ inches. Gold engagement area, Tin/Lead tails
AM	Nickel underplate, 30µ inches. Gold engagement area, Tin/Lead tails

### Contact Characteristics

Code	AWG
A	20-22
B	24-26
C	28-30

## accessories

### Cover Options

**216 - 3XX - XX**

### Cover Characteristics

Code	Description
00	Standard Cover
01	Ejection Cover MIL-83503 Type

Number of positions

Blue type indicates standard, available product.