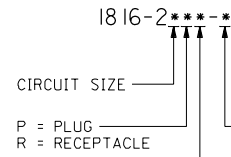


PLUG		RECEPTACLE	
ORDER NO	ENG NO	ORDER NO	ENG NO
03-09-2028	1816-2P	03-09-1028	1816-2R
03-09-7028	1816-2PBK	03-09-6028	1816-2RBK
03-09-7029	1816-2PBK-B		

**LEGEND:**

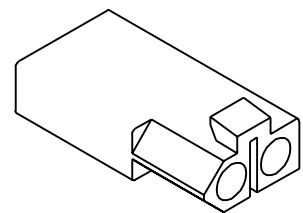
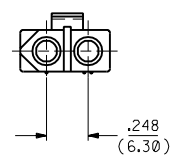
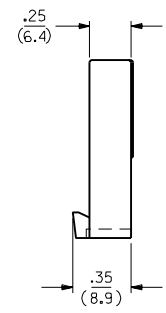
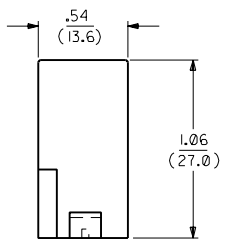
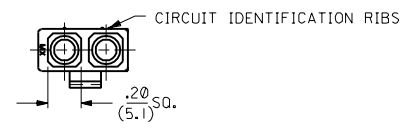


COLOR: \_\_\_\_\_  
 BLANK = NATURAL COLOR  
 AM = AMBER BK = BLACK BU = BLUE  
 BN = BROWN GY = GRAY GN = GREEN  
 OR = ORANGE RD = RED YW = YELLOW

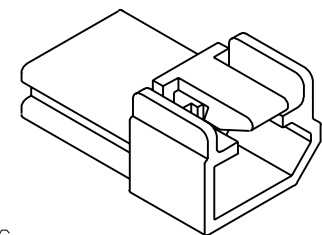
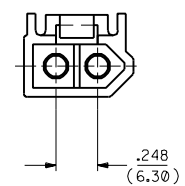
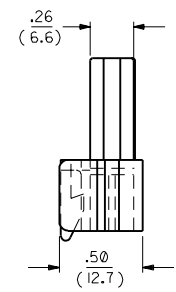
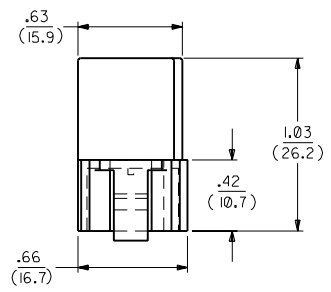
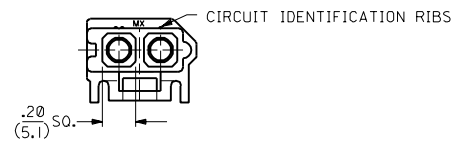
**NOTES:**

- MOLEX PRODUCT SPEC 02-09 APPLIES.
- FOR USE WITH MOLEX .093/(2.36) SERIES TERMINALS.

MATERIAL:  
 BLANK = NYLON 6/6, 94V-2, PER SMES-128-A-  
 B = NYLON 6/6, 94V-2, HEAT STABILIZED, PER SMES-128-O-1



RECEPTACLE



PLUG

C1	ADD RADII PER ECR U2 1817 GC 12/23/92	RW
C	REVISE PER ECR U2 1105 GC 7/29/92	RW
B1	REVISE PER ECR U2 0825 GC 5/28/92	RW
B	REVISED & REDRAWN ECR * U81903 KBW 9-29-88	

DIMENSIONS SHOWN METRIC (INCH)		UNLESS OTHERWISE SPECIFIED TOLERANCES: ANGULAR ± 1/2°		TITLE	
3 PLACE	± .010	---	---	.093/(2.36) HOUSINGS PLUG & RECEPTACLE	
2 PLACE	± .014	± 0.25	---	2 CIRCUIT, .248/(6.30)C	
1 PLACE	---	± 0.35	---	MOLEX INCORPORATED	
DRAFT WHERE APPLICABLE MUST REMAIN WITHIN DIMENSIONS				SHEET NO. DATE	
				1 OF 1 09/20/88	
PART NO. M18162 S84		DRAWING NO. SD-1816-2*		MFG. SH. REV. LTR. REVISIONS	
DRAWN BY: KBW		CHKD. BY: RAS		FILE NAME: M18162 S84	
APP'D. BY: RAS		SCALE: 2 : 1		DIV. SIZE: CP C	