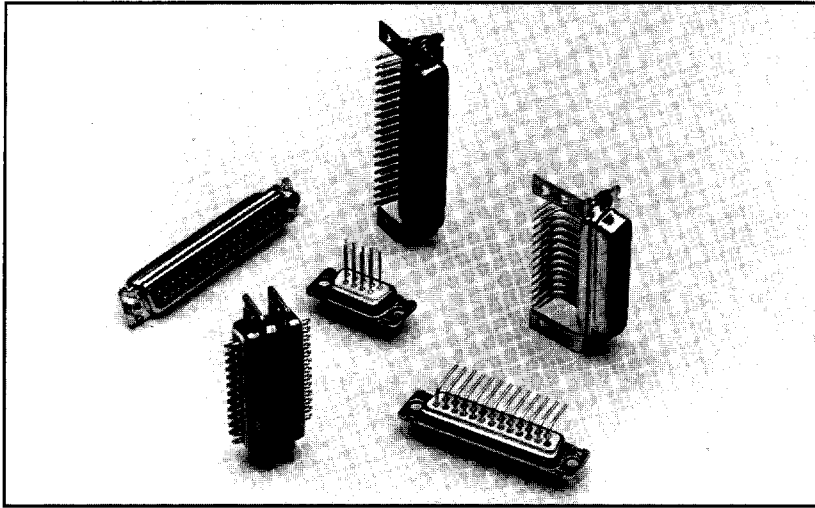


**AMPHENOL D-SUBMINIATURE  
FIXED MACHINED CONTACT INDUSTRIAL CONNECTOR**

**17D/117DF SERIES**



Amphenol's 17D and 117DF series fixed contact D-subminiature connector is suitable for commercial or industrial use. The machined contacts provide stability and reliability.

This series offers the broadest range of termination options in the Amphenol line.

Filter connectors are available - contact factory.

**SPECIFICATIONS:**

**Temperature Range:**  
-55° C to +105° C

**Voltage Rating:**  
300 V RMS to 50 Hz

**Current Rating:**  
7.5 amps

**Mating Cycles:**  
17D: 100 minimum  
117DF: 500 minimum

**Wire Size:**  
20 AWG

**Shells:**  
Steel/tin-plated, grounding indents on plug front shell or zinc/ yellow chromate

**Dielectric:**  
Two-piece black thermoplastic UL 94 VO

**Dielectric Withstanding Voltage:**  
> 1000 V RMS to 50 Hz

**Contacts:**  
17D: Male and female: screw-machined brass  
117DF: Male: screw-machined brass  
Female: screw-machined phosphor bronze

**Contact Plating:**  
Gold over nickel

**Insertion Force per Contact:**  
1.2 N < F < 2.5 N

**Contact Resistance:**  
< 5 milliohms

**Insulation Resistance:**  
> 5000 megaohms

**Contact Arrangements:**  
See page 65

**Panel Cutouts and Mounting:**  
See pages 63 - 64

**ORDERING INFORMATION:**

**17D - X - X - XX - X - XXXX**

Contact Plating	Shell Plating		
	Yellow Chromate	Tinned	Tinned & Indents*
.000010" gold over nickel	<b>17D</b>	77D	717D
.000020" gold over nickel	117DF	177DF	777DF

\*plug only

<b>Shell Size</b>	
E	(9 contacts)
A	(15 contacts)
B	(25 contacts)
C	(37 contacts)
D	(50 contacts)

<b>Code</b>	<b>Mounting Type</b>
Blank	.122 (3.1) dia. mounting holes
F	Float bushings (front or rear mount)
G	M3 rear clinch nut
H	#4-40 rear clinch nut

<b>Code</b>	<b>Contact Type</b>
P	Pin (male)
S	Socket (female)

<b>Code</b>	<b>Termination</b>
Blank	Solder cup
T	Straight board mount
U	<b>Straight board mount</b>
V	<b>Straight board mount</b>
OL2	Straight board mount
A	<b>Right angle board mount</b>
C	<b>Right angle board mount</b>
AJ3	Right angle board mount
AJ4	Right angle board mount
AM4	Right angle board mount
AM4B	Right angle board mount
1AON	Right angle board mount
1AMN	Right angle board mount
1APN	Right angle board mount
1ATN	Right angle board mount
1AUN	Right angle board mount
F179	<b>Wire wrap (2 wrap)</b>
F179A	<b>Wire wrap (3 wrap)</b>

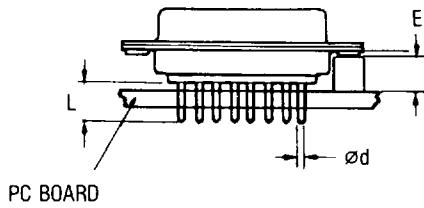
**Number of Contacts**  
9, 15, 25, 37, 50

*See next page for dimensions.*

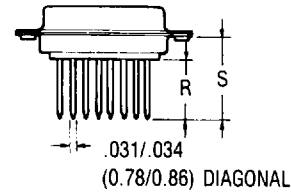
**AMPHENOL D-SUBMINIATURE  
FIXED MACHINED CONTACT INDUSTRIAL CONNECTOR**

**17D/117DF SERIES**

**Straight Printed Circuit Terminations**



**Wire Wrap Terminations**



Termination	Ø d	L	E
U	.024 (0.60)	.124 ( 3.2)	.185 (4.7)
V	.040 (1.02)	.093 (2.36)	.185 (4.7)
T	.024 (0.60)	.157 ( 4.0)	.185 (4.7)
OL2	.024 (0.60)	.217 ( 5.5)	.240 (6.1)

Termination Code	Number of Wraps	R	S
F179	2	.378 (9.6)	.591 (15)
F179A	3	.512 (13)	.709 (18)

Notes: Standoff "E" not included. Use OL2 termination if boardlock is required.

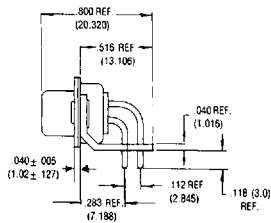
**Right Angle PC Board Terminations**

**Code**

**PC Tail Diameter inches (mm)**

**Mounting Options**

figure 1 .283 Footprint

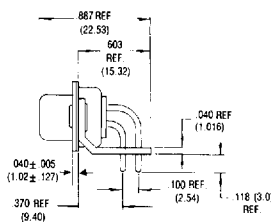


- A .040 (1.02)
- C .040 (1.02)
- AJ3 .040 (1.02)
- A4 .024 (0.60)
- AJ4 .024 (0.60)
- AM4 .024 (0.60)

with metal bracket  
without bracket  
with plastic bracket  
without bracket  
with plastic bracket  
with metal bracket

Note: .318" footprint also available in 617 Series (p. 10)

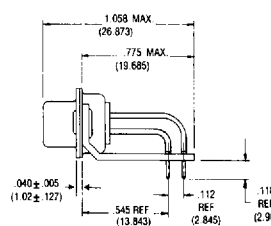
figure 2 .370 Footprint



- 1AON .024 (0.60)
- 1AMN .024 (0.60)
- 1APN .024 (0.60)
- 1ATN .024 (0.60)
- 1AUN .024 (0.60)

without bracket  
with riveted metal bracket  
with riveted plastic bracket  
with metal bracket and non-removable 4-40 front clinch nut  
with plastic bracket and non-removable 4-40 front clinch nut

figure 3 .545 Footprint

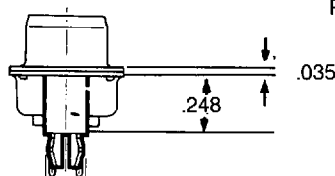


- AM4B .024 (0.60)

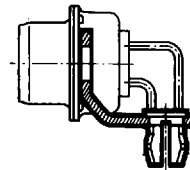
with metal bracket

Note: .590" footprint also available in 617 Series (p. 10)

**Grounding Tab/Boardlock Options**



**RM5** Add suffix (RM5) for boardlock/grounding tab for 4-40 clinch nut. This option is available only on straight PC board-mount connectors with tin-plated shells and OL2 terminations.  
Ex: 77DCH37S-OL2 (RM5)  
717DAH15P-OL2 (RM5)



**RM6** Add suffix (RM6) for boardlock/grounding tab for 4-40 clinch nut. This option is available only on right-angle PC board-mount connectors with tin-plated shells and metal brackets.  
Ex: 77DBH25SAM4 (RM6)  
717DBH25PAM4 (RM6)