

SPECIFICATIONS

Current Rating: 1A, AC,DC
 Voltage Rating: 150V AC,DC
 Pin Material: Brass, Gold Flash
 Contact Resistance: 30mΩ Max.
 Solder Tabs: Phosphor Bronze Gold Flash
 Wafer Material: Nylon 6T, UL94V-0
 Cap Material: Nylon 6T, UL94V-0 Beige
 Insulation Resistance: 500MΩ min.
 Withstanding: 500V AC/minute
 Temperature Range: -25°C ~ +85°C

Dimensions			
Pos	A	B	C
2	1.25	4.15	6.25
3	2.50	5.40	7.50
4	3.75	6.65	8.75
5	5.00	7.90	10.00
6	6.25	9.15	11.25
7	7.50	10.40	12.50
8	8.75	11.65	13.75
9	10.00	12.90	15.00
10	11.25	14.15	16.25
11	12.50	15.40	17.50
12	13.75	16.65	18.75
13	15.00	17.90	20.00
14	16.25	19.15	21.25
15	17.50	20.40	22.50

RoHS compliant

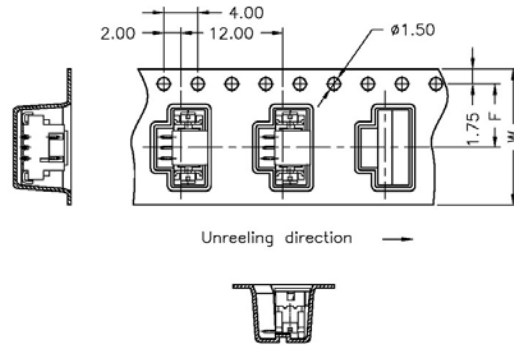
Rev.	Description	Date	Approved	Drawing	Name	Date
				Approved	Howard	06/29/06
				Checked	Lizzy	06/29/06
				Drawn	Tina	06/29/06
				0.0 ± 0.35	0.00 ± 0.20	Angles ± 3'
				UNIT: mm		

Central Components Manufacturing
 440 Lincoln Blvd., Middlesex, New Jersey 08846
 Phone 732 469-5720 888 288-5152 Fax 732 469-1919

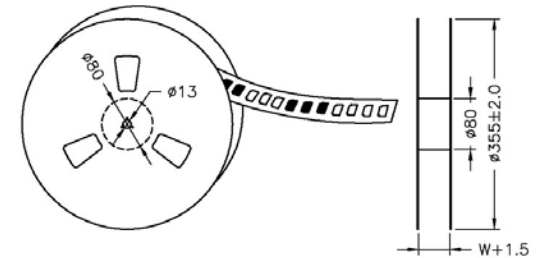
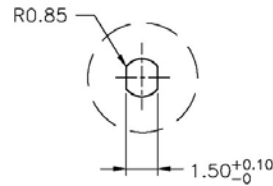
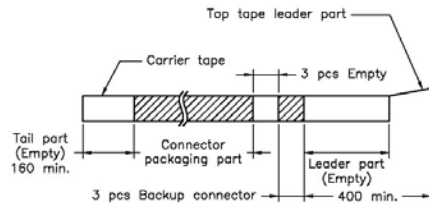
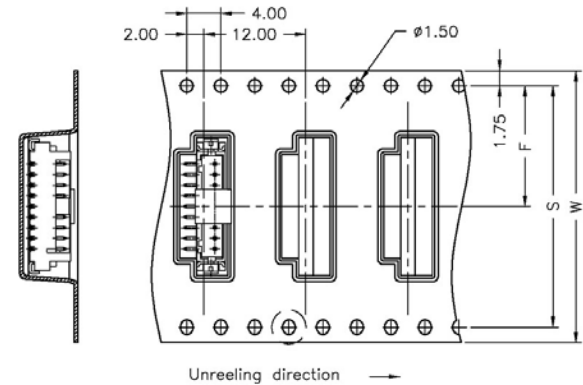
Part No.: **JS-J-1252WVS-XX**

Description: 1.25mm Pitch Single Row Wafer Surface Mount

02~08 Contacts



09~15 Contacts



Dimensions			
Contacts	W±0.3	F±0.1	S±0.1
02	16	7.50	
03	16	7.50	
04	24	11.50	
05	24	11.50	
06	24	11.50	
07	24	11.50	
08	24	11.50	
09	32	14.20	
10	32	14.50	28.40
11	32	14.20	28.40
12	32	14.20	28.40
13	32	14.20	28.40
14	44	20.20	40.40
15	44	20.20	40.40

Rev.	Description	Date	Approved	Drawing	Name	Date
				Approved	Howard	06/29/06
				Checked	Lizzy	06/29/06
				Drawn	Tina	06/29/06
				0.0 ± 0.35	0.00 ± 0.20	Angles ± 3'
				UNIT: mm		

Central Components Manufacturing
 440 Lincoln Blvd., Middlesex, New Jersey 08846
 Phone 732 469-5720 888 288-5152 Fax 732 469-1919

Part No.: **JS-J-1252WVS-XX**

Description: 1.25mm Pitch Single Row Wafer Surface Mount

