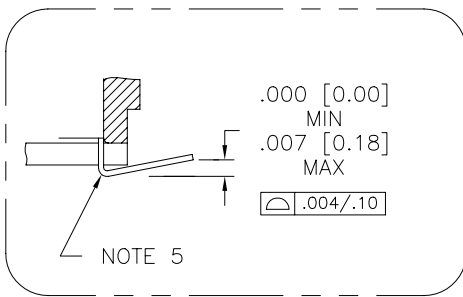
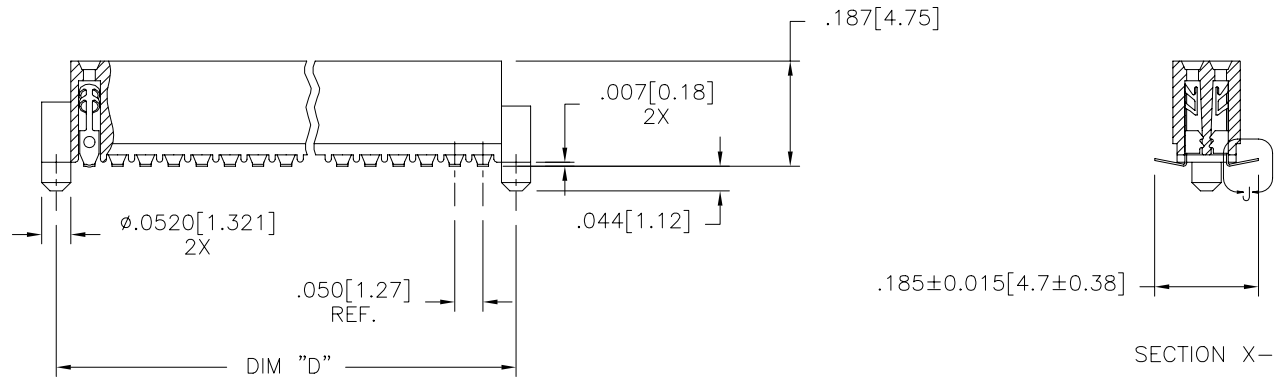
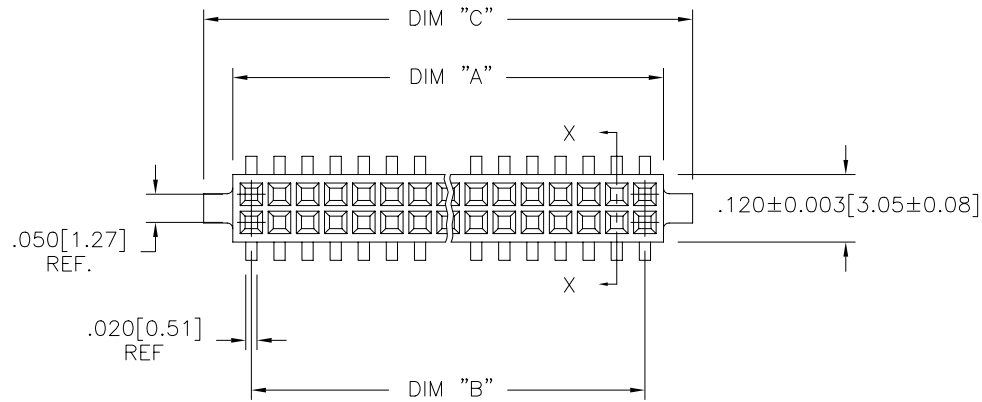


PRODUCT NUMBER  
SEE TABLE



|             |          |          |         |                                       |              |                  |       |  |  |
|-------------|----------|----------|---------|---------------------------------------|--------------|------------------|-------|--|--|
| mat'l. code |          | surface  |         | tolerance                             |              | projection       |       | product family                                       |  |
| -           |          | ISO 1302 |         | ISO 406<br>ISO 1101                   |              |                  |       | RIB CAGE   |  |
| ltr         | ecn no   | dr       | date    | tolerances unless otherwise specified |              |                  | title |  |  |
| AB          | V11674   | CRG      | 6/22/01 | angles                                | linear       | XX ±.01/.3       |       | INCH/MM  |  |
| AC          | M05-0084 | MHT      | 5/05/05 |                                       |              | xxx ±.005/.13    |       | .050cc VERT. CARD CONN.<br>SURF. MT. W/LOC. FEATURES |  |
| AD          | M06-0284 | AEA      | 7/27/06 | 0°±2'                                 |              | xxxx ±.0020/.050 |       | scale 3:1  |  |
| AE          | M07-0267 | MHT      | 6/08/07 | dr                                    | M. CLOUSER   | 5/25/91          |       | dwg no   |  |
| AF          | M07-0345 | AGS      | 7/26/07 | enrg                                  | B. BARUFFALO | 5/25/91          |       | sheet 1 of 4 size                                    |  |
| AG          | M09-0058 | CMR      | 4/06/09 | chr                                   | B. BARUFFALO | 5/25/91          |       | 87023 A3   |  |
| AH          | N10-0174 | YOH      | 6/17/10 | appd                                  | B. BARUFFALO | 5/25/91          |       | type Product Customer Drawing                        |  |
| sheet       | revision | AH       | AH      | AH                                    | AH           |                  |       |  |  |
| index       | sheet    | 1        | 2       | 3                                     | 4            |                  |       |  |  |

PRODUCT NO.  
87023 - XXX

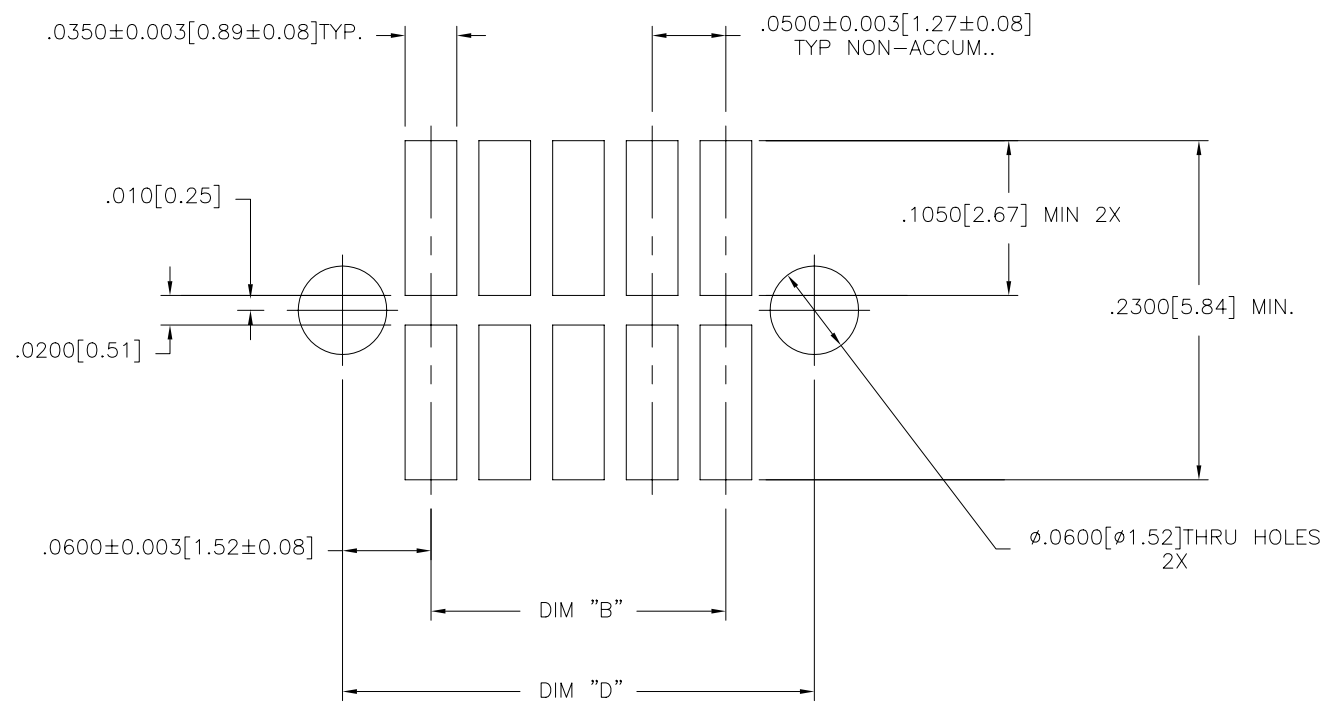
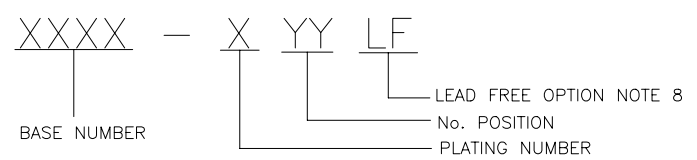


FIGURE A  
RECOMMENDED  
P.C.B. LAYOUT



|             |          |          |      |                                       |              |               |           |                |  |
|-------------|----------|----------|------|---------------------------------------|--------------|---------------|-----------|----------------|--|
| mat'l. code |          | surface  |      | tolerance                             |              | projection    |           | product family |  |
| -           |          | ISO 1302 |      | ISO 406<br>ISO 1101                   |              |               |           | RIB CAGE       |  |
| ltr         | ecn no   | dr       | date | tolerances unless otherwise specified |              |               |           |                |  |
| AH          |          |          |      | angles                                | linear       | XX ±.01/.3    | INCH/MM   |                | title  |
|             |          |          |      | 0°±2'                                 |              | XXX ±.005/.13 | scale 3:1 |                | .050cc VERT. CARD CONN.<br>SURF. MT. W/LOC. FEATURES |
|             |          |          |      | dr                                    | M. CLOUSER   | 5/25/91       |           |                | dwg no   |
|             |          |          |      | enr                                   | B. BARUFFALO | 5/25/91       |           |                | sheet 2 of 4   |
|             |          |          |      | chr                                   | B. BARUFFALO | 5/25/91       |           |                | size   |
|             |          |          |      | appd                                  | B. BARUFFALO | 5/25/91       |           |                | A3   |
| sheet       | revision |          |      |                                       |              |               |           |                | type   |
| index       | sheet    |          |      |                                       |              |               |           |                | Product Customer Drawing                             |

| PRODUCT NO.<br>NOTE 8 | SIZE   | DIM A        | DIM B       | DIM C        | DIM D         | SPECIAL<br>PACKAGING | TAPE<br>WIDTH<br>PITCH | PIECES<br>PER REEL |
|-----------------------|--------|--------------|-------------|--------------|---------------|----------------------|------------------------|--------------------|
| 87023-605             | 2 X 5  | .266/6.756   | .200/5.08   | .370/9.398   | .3200/8.128   | NOTE 6               | 24mm / 12mm            | 750                |
| -610                  | 2 X 10 | .516/13.106  | .450/11.43  | .620/15.748  | .5700/14.478  | NOTE 6               | 24mm / 12mm            | 750                |
| -615                  | 2 X 15 | .766/19.456  | .700/17.78  | .870/22.098  | .8200/20.828  | NOTE 6               | 44mm / 12mm            | 500                |
| -620                  | 2 X 20 | 1.016/25.806 | .950/24.13  | 1.120/28.448 | 1.0700/27.178 | NOTE 6 & 7           | 44mm / 12mm            | 500                |
| -625                  | 2 X 25 | 1.266/32.156 | 1.200/30.48 | 1.370/34.798 | 1.3200/33.528 | NOTE 6               | 56mm / 12mm            | 500                |
| -630                  | 2 X 30 | 1.516/38.506 | 1.450/36.83 | 1.620/41.148 | 1.5700/39.878 | NOTE 6 & 7           | 56mm / 12mm            | 500                |
| -635                  | 2 X 35 | 1.766/44.856 | 1.700/43.18 | 1.870/47.498 | 1.8200/46.228 | NOTE 6               | 72mm / 12mm            | 500                |
| -640                  | 2 X 40 | 2.016/51.206 | 1.950/49.53 | 2.120/53.848 | 2.0700/52.578 | NOTE 6 & 7           | 72mm / 12mm            | 500                |
| -645                  | 2 X 45 | 2.266/57.556 | 2.200/55.88 | 2.370/60.198 | 2.3200/58.928 | NOTE 6               | 72mm / 12mm            | 500                |
| -650                  | 2 X 50 | 2.516/63.906 | 2.450/62.23 | 2.620/66.548 | 2.5700/65.278 | NOTE 6               | 88mm / 12mm            | 500                |
| -905                  | 2 X 5  | .266/6.756   | .200/5.08   | .370/9.398   | .3200/8.128   | NO                   | ---                    | ---                |
| -910                  | 2 X 10 | .516/13.106  | .450/11.43  | .620/15.748  | .5700/14.478  | NO                   | ---                    | ---                |
| -915                  | 2 X 15 | .766/19.456  | .700/17.78  | .870/22.098  | .8200/20.828  | NO                   | ---                    | ---                |
| -920                  | 2 X 20 | 1.016/25.806 | .950/24.13  | 1.120/28.448 | 1.0700/27.178 | NO                   | ---                    | ---                |
| -925                  | 2 X 25 | 1.266/32.156 | 1.200/30.48 | 1.370/34.798 | 1.3200/33.528 | NO                   | ---                    | ---                |
| -930                  | 2 X 30 | 1.516/38.506 | 1.450/36.83 | 1.620/41.148 | 1.5700/39.878 | NO                   | ---                    | ---                |
| -935                  | 2 X 35 | 1.766/44.856 | 1.700/43.18 | 1.870/47.498 | 1.8200/46.228 | NO                   | ---                    | ---                |
| -940                  | 2 X 40 | 2.016/51.206 | 1.950/49.53 | 2.120/53.848 | 2.0700/52.578 | NO                   | ---                    | ---                |
| -945                  | 2 X 45 | 2.266/57.556 | 2.200/55.88 | 2.370/60.198 | 2.3200/58.928 | NO                   | ---                    | ---                |
| 87023-950             | 2 X 50 | 2.516/63.906 | 2.450/62.23 | 2.620/66.548 | 2.5700/65.278 | NO                   | ---                    | ---                |



NOTES:

- ① HOUSING MATERIAL:  
GLASS FILLED THERMOPLASTIC FLAME RETARDANT PER UL 94V-0  
COLOR: NATURAL
- ② TERMINAL MATERIAL: BeCu
- ③ TERMINAL PLATING:  
-6XXLF: 30u"/.76um MIN HARD GOLD OVER Ni ON CONTACT ZONES.  
100u"/2.54um MIN PURE TIN OVER Ni  
IN SOLDERING ZONES, OTHERWISE GOLD FLASH OR UNPLATED.  
  
-9XXLF: 60u"/1.52um MIN HARD GOLD ON CONTACT ZONES,  
100u"/2.54um MIN PURE TIN OVER Ni  
OVER Ni IN SOLDERING ZONES, OTHERWISE GOLD FLASH OR UNPLATED.
- 4 APPLICATION INFORMATION:  
A. RECOMMENDED MOUNTING PAD PATTERN IS SHOWN IN FIGURE "A".  
  
B. MATING PINS TO BE .0176/.447 TO .0181/.459 DIA.  
  
C. MATING PIN TIPS TO BE IN TRUE POSITION TO MATING GRID WITHIN .006/.15 DIA.  
  
D. SUGGESTED MATING PIN LENGTH .130/3.30 ±.010/.25.

- ⑤ LEAD TIPS TO BE ABOVE HEEL, UP TO .007/0.18 MAX. COPLANARITY TO BE MEASURED AT LOWEST POINT (HEEL).
- ⑥ ADD "TR" TO END OF DASH NUMBER FOR TAPE AND REEL PACKAGED WITH CAP. TOOLED ONLY FOR NOTED CONNECTORS.
- 7. ADD "CT" TO END OF DASH NUMBER FOR CONNECTOR WITH CAP FOR VACUUM PICKUP IN TUBE.
- ⑧ ADD LF SUFFIX AT THE END OF PART NUMBER FOR LEAD FREE OPTION.
- 9. THE HOUSING WILL WITHSTAND EXPOSURE TO 260°C PEAK TEMPERATURE FOR 20 SECONDS IN A CONVECTION, INFRA-RED OR VAPOR PHASE REFLOW OVEN. SEE APPLICATION NOTE/PROCEDURES IF THEY ARE AVAILABLE.
- ⑩ THIS PRODUCT MEETS EUROPEAN UNION DIRECTIVES AND OTHER COUNTRY REGULATION AS DESCRIBED IN GS-22-008.

|             |          |          |                     |                                       |  |
|-------------|----------|----------|---------------------|---------------------------------------|--|
| mat'l. code |          | surface  | tolerance           | projection                            | product family                                       |
| -           |          | ISO 1302 | ISO 406<br>ISO 1101 |                                       | RIB CAGE   |
| ltr         | ecn no   | dr       | date                | tolerances unless otherwise specified | title  |
| AH          |          |          |                     | XX ±.01/.3<br>XXX ±.005/.13<br>0±2'   | .050cc VERT. CARD CONN.<br>SURF. MT. W/LOC. FEATURES |
|             |          |          |                     | linear                                | INCH/MM  |
|             |          |          |                     | dr                                    | scale 3:1  |
|             |          |          |                     | enrg                                  | M. CLOUSER 5/25/91                                   |
|             |          |          |                     | chr                                   | B. BARUFFALO 5/25/91                                 |
|             |          |          |                     | appd                                  | B. BARUFFALO 5/25/91                                 |
| sheet       | revision |          |                     |                                       | dwg no   |
| index       | sheet    |          |                     |                                       | 87023  |
|             |          |          |                     |                                       | sheet 3 of 4   |
|             |          |          |                     |                                       | size A3  |
|             |          |          |                     |                                       | type Product Customer Drawing                        |



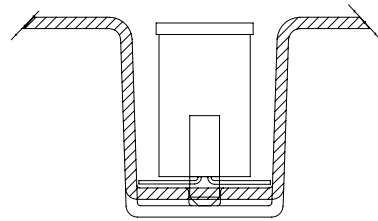
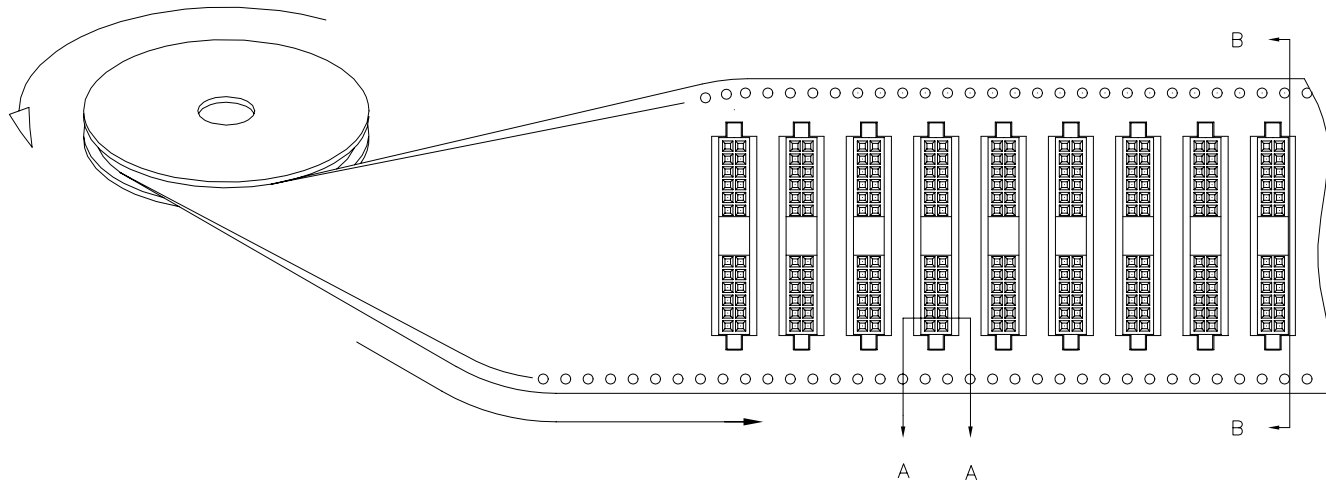
Copyright FCI

PRODUCT NUMBER  
SEE TABLE

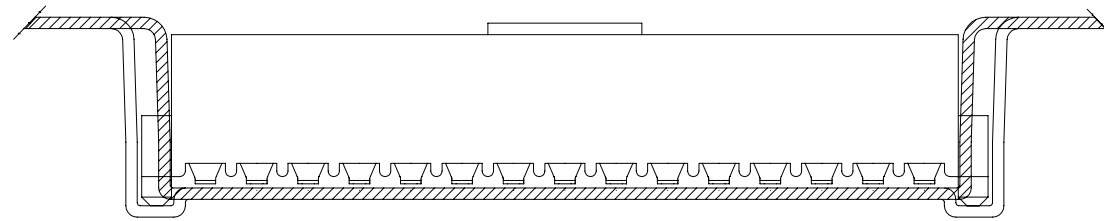
UNREELING  
DIRECTION

REFERENCE ONLY

TAPE WIDTH'S 32mm AND ABOVE HAS BOTH FEED TRACKS,  
BELOW 32mm HAS TOP FEED TRACK ONLY.



SECTION A-A



SECTION B-B

|             |          |          |      |                                       |              |               |           |                |  |
|-------------|----------|----------|------|---------------------------------------|--------------|---------------|-----------|----------------|--|
| mat'l. code |          | surface  |      | tolerance                             |              | projection    |           | product family |  |
| -           |          | ISO 1302 |      | ISO 406<br>ISO 1101                   |              |               |           | RIB CAGE       |  |
| ltr         | ecn no   | dr       | date | tolerances unless otherwise specified |              |               |           |                |  |
| AH          |          |          |      | angles                                | linear       | XX ±.01/.3    | INCH/MM   |                | title  |
|             |          |          |      | 0°±2'                                 |              | XXX ±.005/.13 | scale 3:1 |                | .050cc VERT. CARD CONN.<br>SURF. MT. W/LOC. FEATURES |
|             |          |          |      | dr                                    | M. CLOUSER   | 5/25/91       |           |                | dwg no   |
|             |          |          |      | enrg                                  | B. BARUFFALO | 5/25/91       |           |                | sheet 4 of 4   |
|             |          |          |      | chr                                   | B. BARUFFALO | 5/25/91       |           |                | size   |
|             |          |          |      | appd                                  | B. BARUFFALO | 5/25/91       |           |                | A3   |
| sheet       | revision |          |      |                                       |              |               |           |                | type   |
| index       | sheet    |          |      |                                       |              |               |           |                | Product Customer Drawing                             |

PDM: Rev:AH

STATUS:Released

Printed: Jun 26, 2010

FCJ  
FCIconnect.com

Copyright FCI