

D-SUB Connector

SPECIFICATIONS

Mechanical

Contact Mating Force: 3.1kg (6.5Lb) max.
Contact Unmating Force: 0.2kg (0.4Lb) min.
Contact Retention Force: 0.91kg (2.0Lb) min.

Electrical

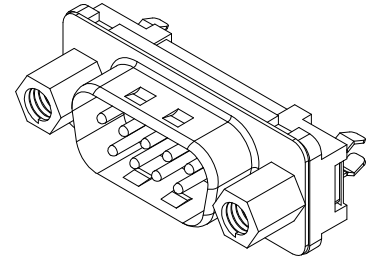
Current Rating: 2.0A
Contact Resistance: 35mW max.
Dielectric Withstanding Voltage: 1000V AC/1min min.
Insulation Resistance: 5000MW

Physical

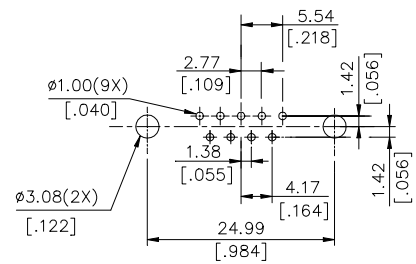
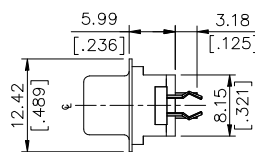
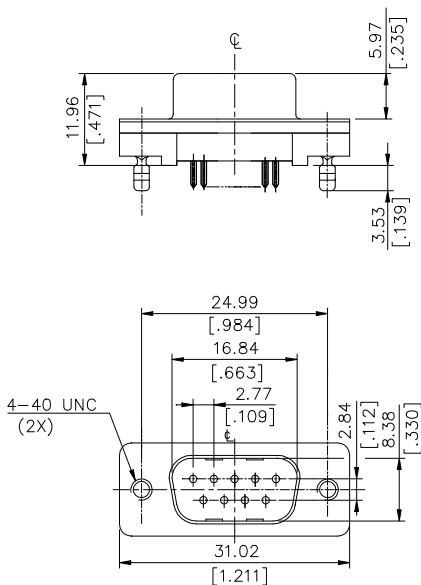
Housing: Thermoplastic, UL 94V-0 rated in Black Color
Contact: Copper alloy
Plating: See "ORDERING INFORMATION"
Solder Pad: Copper alloy
Operating Temperature: -55 to +105

DT Series

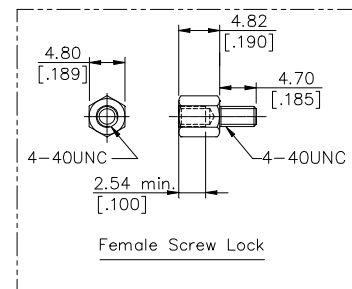
Vertical Type, T/H
2.77mm [.109"] Pitch
9 Pos.



DRAWING



RECOMMENDED P.C.B. LAYOUT



ORDERING INFORMATION

PRODUCT NO.: DT 0 0 1 1 * - H5A* - 4F

