

Ordering Information:

2547S $\frac{**}{1} \frac{**}{2} \frac{**}{3}$

RoHS COMPLIANT

1. No. of circuits(02 through 28)

2. Color:

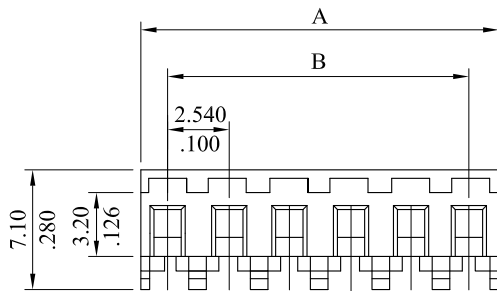
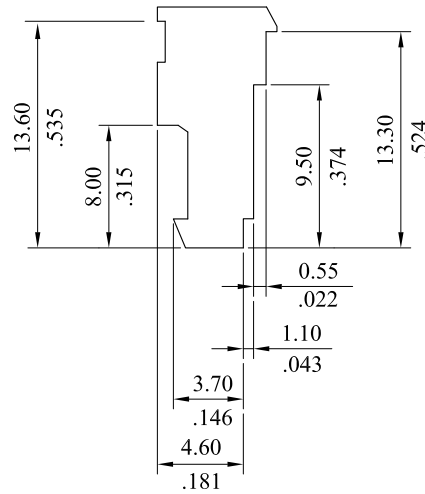
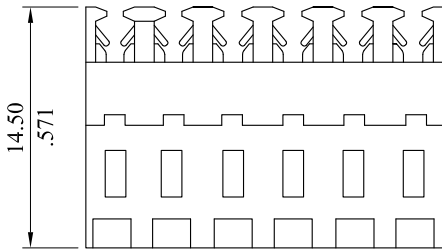
00=WHITE 30=RED
60=GREEN 70=BLUE

3. Wire Gauge:

22 = 22AWG 24 = 24AWG
26 = 26AWG 28 = 28AWG

Material:

* Insulator: Nylon 6/6,UL94V-2
* Contact: Brass



$A = 2.54(.100") \times \text{No.of circuits}$
 $B = 2.54(.100") \times \text{No.of spaces}$

E	ES101242			LEOCO CORPORATION	APPROVED:	PART NO.:				
D	ES071009				GENERAL TOLERANCES: (UNLESS SPECIFIED)	DATE:	2547S*****			
C	ES050907				CHECKED:	TITLE:				
B	ES050775				DATE:	2.54MM CEBTER MASS TERMINATED CONNECTORS				
A	DWG REL				DRAWN:	DRAWING NO.:				
REV.	ECO. NO.	CHG.	APP.		DATE:	254701S				
						UNITS	SCALE	SIZE	SHEET	REV.
				ANGULAR $\pm (1^\circ)$		$\frac{\text{mm}}{\text{inch}}$	2:1	A4	1/1	E