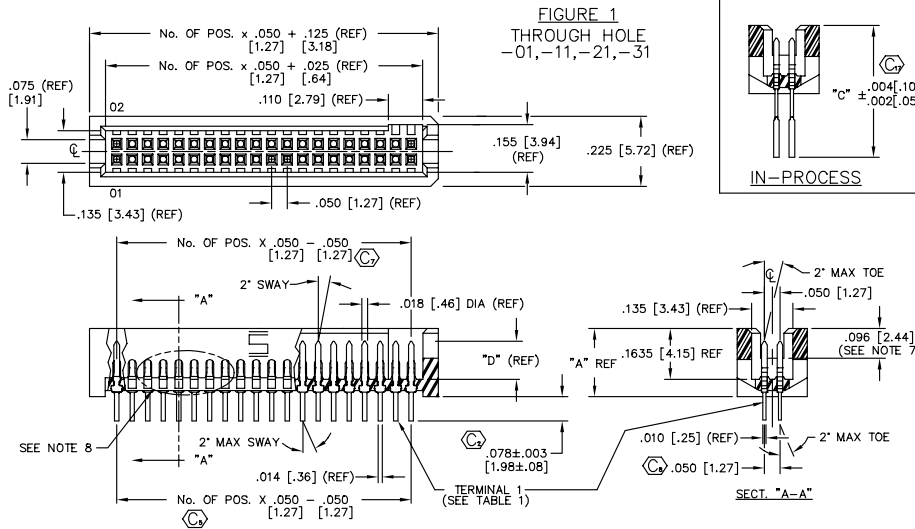


REV. CS



DO NOT SCALE PRINT

DIMENSIONS ARE IN INCHES		UNLESS OTHERWISE NOTED		TOLERANCES ARE:	TITLE:	DWG NO:
ONE PLACE DECIMALS ±.1 [2.54]		THREE PLACE DECIMALS ±.005 [.127]		ANGLES ±.2°	.050 x .050	TFM-1XX-XX-XXX-X-XX
TWO PLACE DECIMALS ±.01 [0.25]		FOUR PLACE DECIMALS ±.0020 [0.05]			TERMINAL STRIP	SHEET 1 OF 3

TFM-1XX-XX-XXX-X-XX

NO. OF POSITIONS

LEAD STYLE -01: (-5 THRU -50 ALL POSITIONS AVAILABLE)

LEAD STYLE -02: (-5 THRU -50 ALL POSITIONS AVAILABLE)

ALL OTHER LEAD STYLES: (-5 THRU -50 MULTIPLES OF 5)

LEAD STYLES -11, -12 POS 12, 16, 17 ALSO AVAILABLE

LEAD STYLES -21, -22, -31, -32 POS 12 & 13 ALSO AVAILABLE

LEAD STYLE

THROUGH HOLE SURFACE MOUNT

-01: (SEE FIG. 1) -02: (SEE FIG. 2)

-11: (SEE FIG. 1) -12: (SEE FIG. 2)

-21: (SEE FIG. 1) -22: (SEE FIG. 2)

-31: (SEE FIG. 1) -32: (SEE FIG. 2)

(SEE TABLE 1)

PLATING SPECIFICATION

-S: SELECTIVE

-L: LIGHT SELECTIVE

-F: FLASHED GOLD

-P: GOLD FLASHED PALLADIUM NICKEL

-G: GOLD

-H: HEAVY GOLD

-SM: SELECTIVE HEAVY GOLD, MATTE TIN TAIL

-LM: SELECTIVE LIGHT GOLD, MATTE TIN TAIL

-FM: FLASH SELECTIVE GOLD, MATTE TIN TAIL

-STL: SELECTIVE TIN LEAD

OPTIONS

-A: ALIGNMENT PIN (USE TFM-XX-D-XX-A, SEE TABLE 1) (SEE FIG. 8, SHEET 2) (NOT AVAILABLE FOR -RA)

-LC: LOCKING CLIP (USE LC-05-TM) (NOT AVAILABLE WITH -RA OPTION) (SEE FIG. 10, SHEET 2) (SEE NOTE 13)

-P: PICK AND PLACE PAD (USE PPP-04) (AVAILABLE IN ALL POSITIONS) (NOT AVAILABLE WITH -RA OPTION, SEE FIG. 7, SHEET 2)

-RA: RIGHT ANGLE (AVAILABLE ONLY IN LEAD STYLE: -01, SEE FIG. 5, SHEET 2)

-TR: TAPE AND REEL (SEE FIG. 4)

-SA: STAKED ALIGNMENT PIN (SEE FIG. 9, SHEET 2) (NOT AVAILABLE FOR -RA)

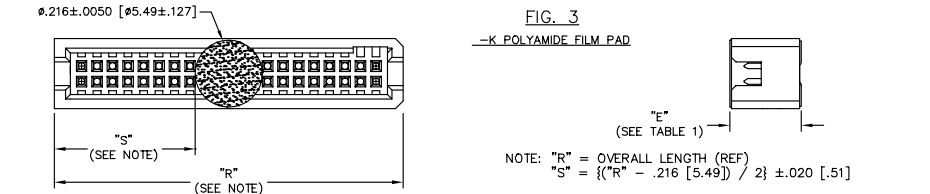
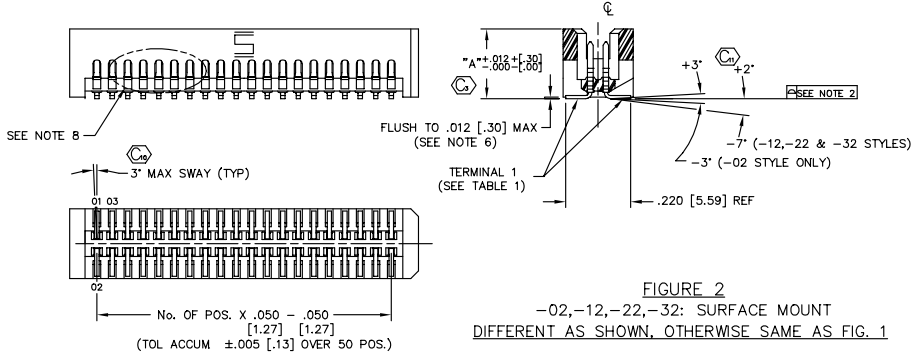
-K: POLYAMIDE FILM (SEE FIG. 3)

•-WT: WELD TABS (USE WT-25-04-T) (AVAILABLE ON -01 & -02 LEAD STYLES ONLY) (SEE FIG. 6, SHEET 2) (AVAILABLE ON -05, -07, -10, -15, -20, -25, & -30 POS ONLY) (AVAILABLE WITH -L & -S PLATING ONLY) (NOT AVAILABLE WITH -A, -LC, -RA, OR -SA OPTIONS)

BODY SPECIFICATION

-D: DOUBLE ROW

* = NOT RELEASED FOR PRODUCTION



- NOTES:
1. MINIMUM PUSHOUT FORCE TO BE 12 OUNCES.
 2. COPPLANARITY: .004 [.10]=POS 02 THRU 26 .006 [.15]=POS 27 THRU 50
 3. MANUFACTURING IN PROCESS DIMENSION DESIGNED TO ACHIEVE FINISHED ASSEMBLY.
 4. (C) REPRESENTS CRITICAL DIMENSION.
 5. [] DIMENSIONS ARE IN MILLIMETERS.
 6. MEASURED FROM BEND.
 7. DIMENSION CHANGED PER REVISION AD. CONTACT ENGINEERING FOR INFORMATION.
 8. SIDES OF PLASTIC BODIES ON ALL LEADSTYLES EXCEPT THE -01 & -02 WILL BE SOLID AND NOT RIBBED
 9. MEASURE FROM TIPS OF PIN.
 10. NOTE DELETED.
 11. .003 MAXIMUM TERMINAL BURR
 12. .005 MAXIMUM HEIGHT VARIATION BETWEEN ANY TWO PINS.
 13. MINIMUM LOCKING CLIP RETENTION TO BE 8 OZS.

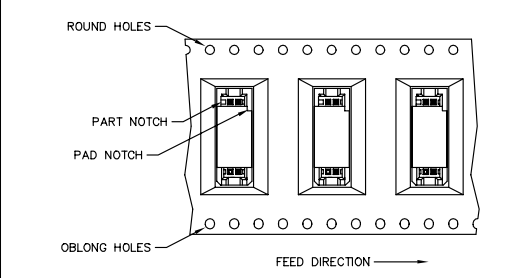


TABLE 1

LEAD STYLE	BODY	"A"	TERMINAL 1	"B"	TERMINAL 2	"C"	"D"	"E"
-01, -02	TFM-XX-D-01-X	.2200 [5.588]	T-1R16-01-XXX-2	.015 [.38]	-----	.427±.004 .002 [10.85±.10 .05]	.133 [3.38]	.230 [5.84]
			T-1R16-01-XXX-2					
-11, -12	TFM-XX-D-02-X	.2900 [7.366]	T-1R20-03-XXX	.030 [.76]	-----	.644±.004 .002 [16.36±.10 .05]	.130 [3.30]	.300 [7.62]
			T-1R20-03-XXX					
-21, -22	TFM-XX-D-03-X	.3600 [9.144]	T-1R20-04-XXX	.100 [2.54]	-----	.644±.004 .002 [16.36±.10 .05]	.130 [3.30]	.370 [2.00]
			T-1R20-04-XXX					
-31, -32	TFM-XX-D-04-X	.4350 [11.049]	T-1R20-02-XXX	.175 [4.45]	-----	.644±.004 .002 [16.36±.10 .05]	.130 [3.30]	.445 [11.30]
			T-1R20-02-XXX					
-01-RA	TFM-XX-D-01-X	.2200 [5.588]	T-1R16-02-XXX	.035 [.76]	T-1R16-03-XXX	-----	.133 [3.38]	.230 [5.84]

MATERIAL:

INSULATOR:
LIQUID CRYSTAL POLYMER
COLOR: BLACK

TERMINAL:
PHOSPHOR BRONZE

FIG. 4
-TR TAPE AND REEL

EXISPROD/ASSEMBLY/050
TFM-ASM

santec

520 PARK EAST BLVD., NEW ALBANY, INDIANA 47150
PHONE (812) 344-4733, P.O. BOX 1147
CODE 55322

MADE BY: KOLB 12-8-89 APPROVAL: []
CHECKED BY: MCCARTIN D.E.M. TFM-1XX-XX-XXX-X-XX
SHEET 1 OF 3

PROPRIETARY NOTE
THIS DOCUMENT CONTAINS INFORMATION OF A PROPRIETARY AND CONFIDENTIAL NATURE. IT IS THE PROPERTY OF SAMTEC CORPORATION AND IS NOT TO BE REPRODUCED OR TRANSMITTED IN ANY FORM OR BY ANY MEANS, ELECTRONIC OR MECHANICAL, INCLUDING PHOTOCOPYING, RECORDING, OR BY ANY INFORMATION STORAGE AND RETRIEVAL SYSTEM, WITHOUT THE WRITTEN CONSENT OF SAMTEC, INC.