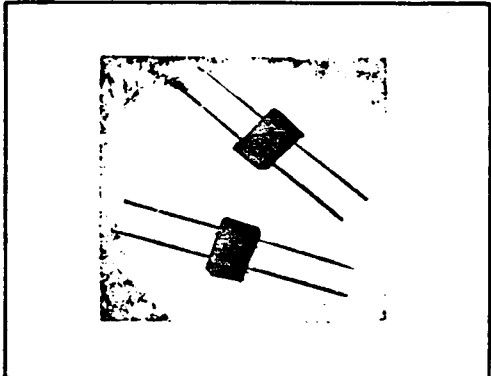


SDA 276

bridge rectifier assembly

X00088

- * PIV 50 TO 1000 VOLTS/AVERAGE OUTPUT CURRENT 1.5 A
- * PIV 1500 TO 3000 VOLTS/AVE. OUTPUT CURRENT 360mA
- * OPERATING AND STORAGE TEMPERATURE -55°C TO +150°C
- * ALSO AVAILABLE WITH "FAST" RECOVERY CHARACTERISTICS UP TO 1000 VOLTS
- * SUBMINIATURE DESIGN FOR PACKAGING VERSATILITY



SSDI introduces a new and complete series of Single Phase Bridge Rectifier Assemblies. These units are designed in special packages to provide maximum thermal conductivity and simple installation.

Consult your factory representative for engineering assistance.

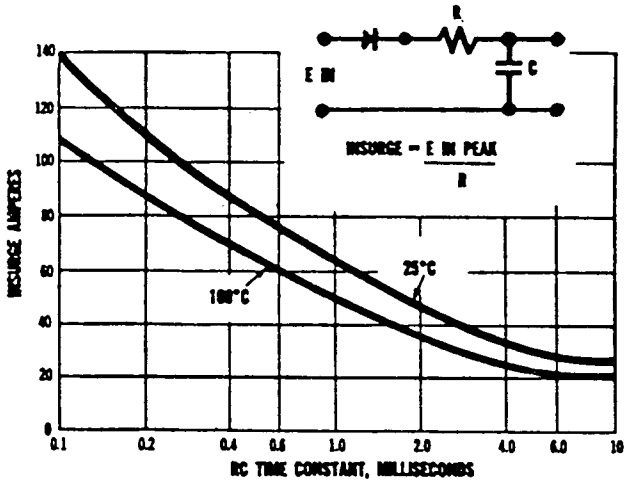
SEMTECH EQUIVALENT: SBR05 through SBR10
 UNITRODE EQUIVALENT: 673-1 through 673-12

SPECIFICATIONS SUBJECT TO CHANGE WITHOUT NOTICE.

Type	PIV per leg	Sine Wave RMS input Voltage Max.	Average DC Output Amps TC = (case temp.)		Peak 1 Cycle Forward Surge	VF Max per leg @ ADC 1.5A	Reverse Current (I _R Max. per leg. @ PIV)	
			55°C	100°C			25°C	100°C
			VOLTS	VOLTS			AMPS	AMPS
SDA276A	50	35	1.5	1.0	10	1.2	2	40
SDA276B	100	70	1.5	1.0	10	1.2	2	40
SDA276C	200	140	1.5	1.0	10	1.2	2	40
SDA276D	400	280	1.5	1.0	10	1.2	2	40
SDA276E	600	420	1.5	1.0	10	1.2	2	40
SDA276F	800	560	1.5	1.0	10	1.2	2	40
SDA276G	1000	700	1.5	1.0	10	1.2	2	40
SDA276H	1500	1050	.36	.24	2.5	3.5	2	40
SDA276J	2000	1400	.36	.24	2.5	3.5	2	40
SDA276K	2500	1750	.36	.24	2.5	3.5	2	40
SDA276L	3000	2100	.36	.24	2.5	3.5	2	40

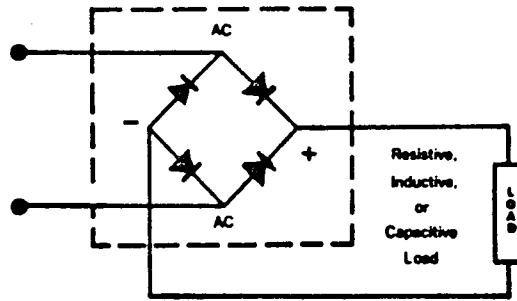
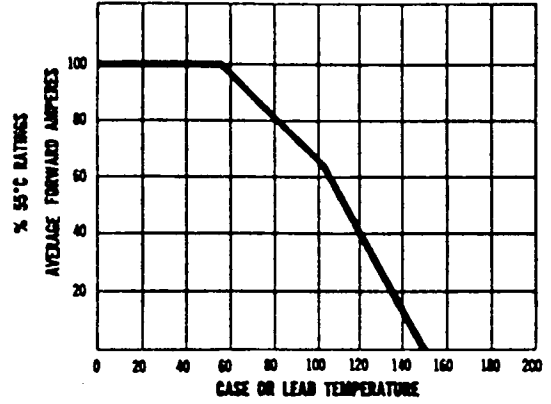


MAXIMUM RATINGS FOR CAPACITY LOADS

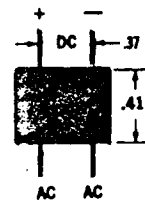
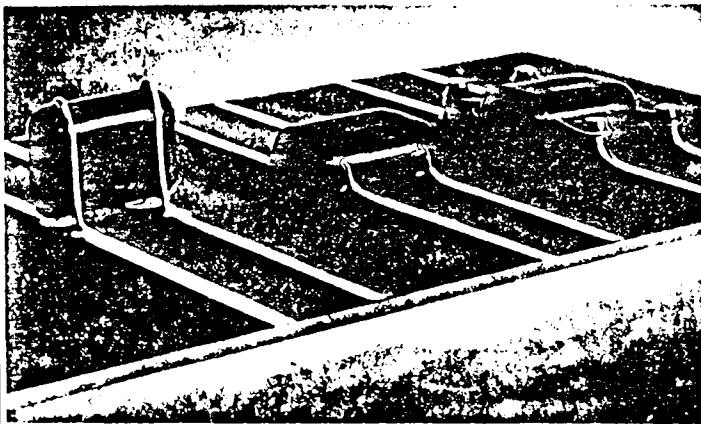


FOR FAST RECOVERY BRIDGES + 2

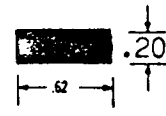
ALL BRIDGES
TEMPERATURE DERATING CURVE



Typical Bridge Circuit



Lead Spacing Measured Center to Center



Tolerance ± .030