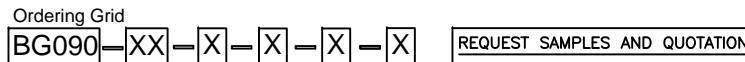
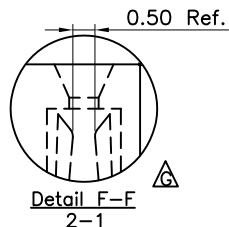
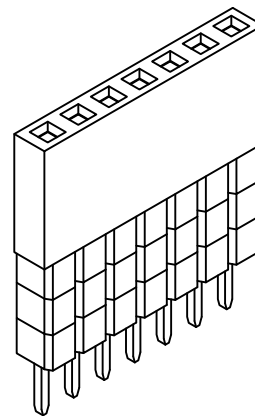
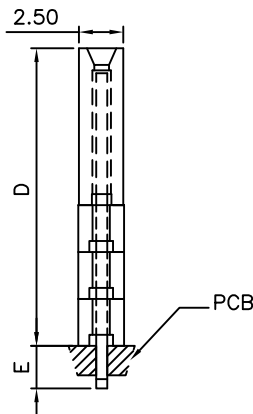
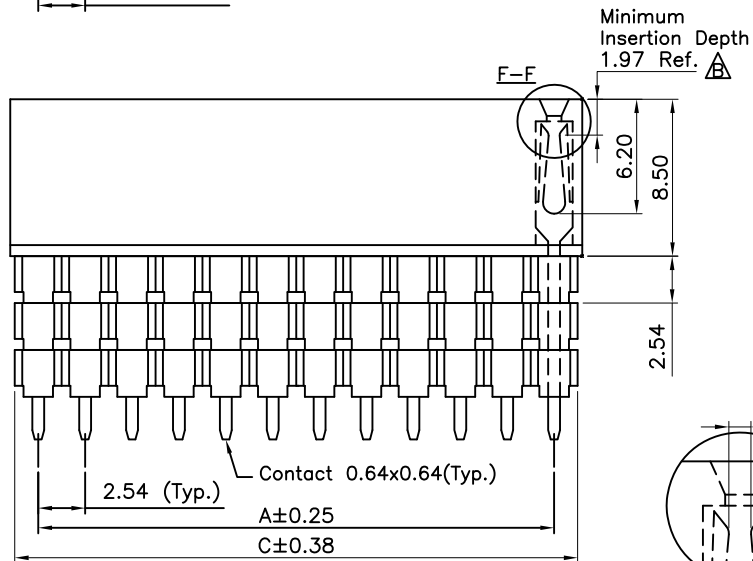
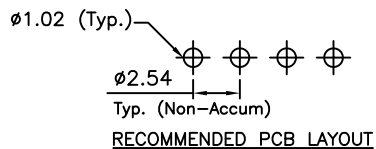
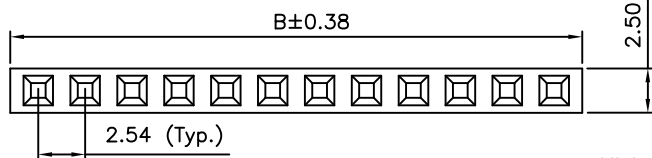


Global Connector Technology Ltd. - BG090: 2.54mm PITCH ELEVATED SOCKET, SINGLE ROW, THROUGH-HOLE, VERTICAL



No. of Contacts: 02 to 40
 Contact Plating:
 A = Gold Flash All Over
 B = Selective Gold Flash Contact Area/Tin On Tail
 C = Tin All Over
 G = 10µm Gold Contact Area/Tin On Tail
 I = 30µm Gold Contact Area/Tin On Tail
Standard = Gold Flash All Over

	DIM D	DIM E
A	11.05	3.00
B	11.05	7.35
E	11.05	12.2
C	13.59	4.85
L	13.59	9.65
D	16.13	2.30
G	16.13	7.10
H	18.67	4.60

Insulator Material:
 N = Nylon 6T (Standard)
 P = PBT
 L = LCP

Packing Options:
 D = Tube (Standard)
 E = Tube with Cap
 F = Tube with Film
 G = Plastic Box

CONTACTS	DIMENSIONS		
	A	B	C
02	2.54	5.58	5.08
03	5.08	8.12	7.62
04	7.62	10.66	10.16
05	10.16	13.20	12.70
06	12.70	15.74	15.24
07	15.24	18.28	17.78
08	17.78	20.82	20.32
09	20.32	23.36	22.86
10	22.86	25.90	25.40
11	25.40	28.44	27.94
12	27.94	30.98	30.48
13	30.48	33.52	33.02
14	33.02	36.06	35.56
15	35.56	38.60	38.10
16	38.10	41.14	40.64
17	40.64	43.68	43.18
18	43.18	46.22	45.72
19	45.72	48.76	48.26
20	48.26	50.80	50.80
21	50.80	53.84	53.34
22	53.34	56.38	55.88
23	55.88	58.92	58.42
24	58.42	61.46	60.96
25	60.96	64.00	63.50
26	63.50	66.54	66.04
27	66.04	69.08	68.58
28	68.58	71.62	71.12
29	71.12	74.16	73.66
30	73.66	76.70	76.20
31	76.20	79.24	78.74
32	78.74	81.78	81.28
33	81.28	84.32	83.82
34	83.82	86.86	86.36
35	86.36	89.40	88.90
36	88.90	91.94	91.44
37	91.44	94.48	93.98
38	93.98	97.02	96.52
39	96.52	99.56	99.06
40	99.06	102.10	101.60

FEATURES
 CHOICE OF FOOT LENGTH 可选脚的长度

SPECIFICATIONS 规格
 CURRENT RATING 电流额定值: 3 AMP
 INSULATOR RESISTANCE 绝缘电阻值: 5000 MEGOHMS MIN.
 CONTACT RESISTANCE 接触电阻值: 20 mOHMS MAX
 DIELECTRIC WITHSTANDING 耐电压: AC 600 V
 OPERATING TEMPERATURE 工作温度: -40°C TO +105°C
 CONTACT MATERIAL 端子物料: PHOSPHOR BRONZE
 INSULATOR MATERIAL 绝缘体物料:
 STANDARD 标准物料: POLYAMIDE 聚酰胺, NYLON 6T, UL 94-V0
 OPTIONS 可选物料: POLYESTER 聚酯, LCP, UL 94-V0
 OR POLYESTER 聚酯, PBT, UL94-V0

SOLDERING PROCESS 可焊性:
 NYLON 6T (STANDARD 标准物料) -
 IR REFLOW 回流焊: 260°C for 10 sec.
 WAVE 波峰焊: 230°C for 5-10 sec.
 MANUAL SOLDER 人工焊接: 350°C for 3-5 sec
 PBT (OPTION 可选物料) - MANUAL SOLDER 人工焊接: 330°C for 3-5 sec.
 (NOT SUITABLE FOR HI-TEMP PROCESS 不适合高温处理)
 LCP (OPTION 可选物料) -
 IR REFLOW 回流焊: 260°C for 10 sec.
 WAVE 波峰焊: 250°C for 5-10 sec.
 MANUAL SOLDER 人工焊接: 350°C for 3-5 sec

MATES WITH 配套之母座 (SUBJECT TO PIN LENGTH 在端子长度适合的条件下):
 BG020 BG030 BG035 BG055 BG060
 BG075 BG080

By	LYH	PN	CB	DR	SA	SA
DETAIL	DRAWING RELEASE	DIMENSION AMENDMENT	STANDARD INSULATOR MATERIAL CHANGED ORDER GRID AMENDMENT	PACKING OPTIONS CHANGED NO. OF CONTACTS CHANGED	CHANGE TO SOLDER TEMP. INFORMATION	CHANGE TO SPECIFICATION DETAILED VIEW ADDED
REV DATE	A 30/10/06	B 09/03/09	C 12/03/09	D 27/04/09	E 05/08/09	F 30/12/09 G 07/02/11



Tolerances (Except as noted)		Part Number:-	Date:-
Dimensions in mm		BG090	30 OCT 06
X. ± 0.30	X.* ± 5°	Description:- 2.54mm PITCH ELEVATED SOCKET, SINGLE ROW, THROUGH-HOLE, VERTICAL	
X.X ± 0.20	X.* ± 2°		
X.XX ± 0.15	XX.* ± 1°		
X.XXX ± 0.10	XXX.* ± 0.5°		
Third Angle Projection		© THIS DRAWING IS CONFIDENTIAL AND MUST NOT BE COPIED OR DISCLOSED WITHOUT WRITTEN CONSENT	

GCT

www.globalconnectortechology.com

Scale	Revision	Material	Drawn by	Sheet No.
NTS	G	See Note	LYH	E & OE 1/1