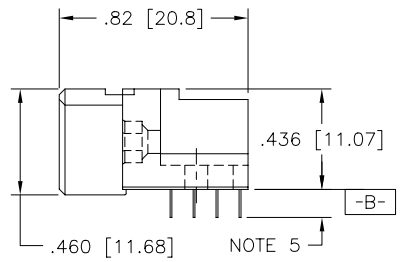
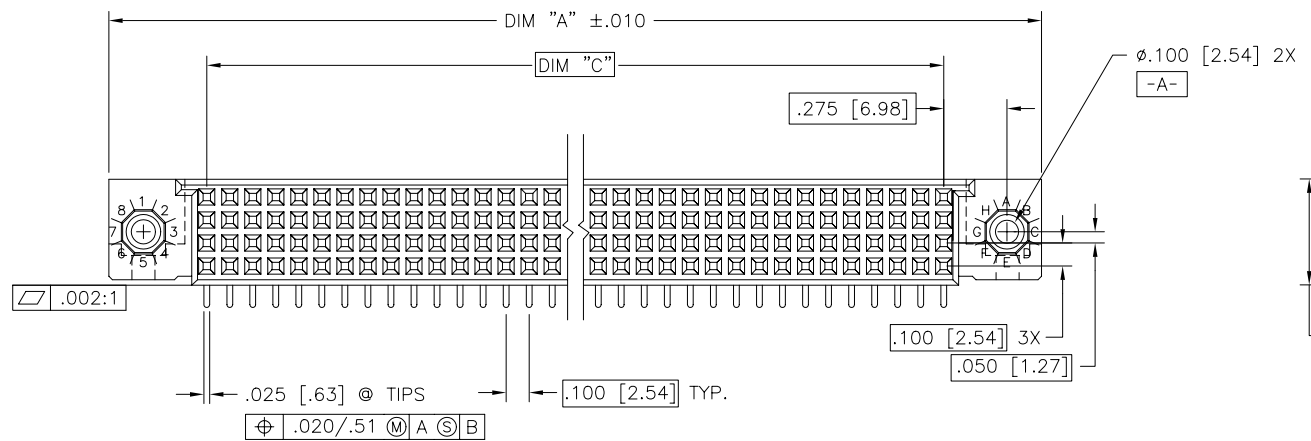
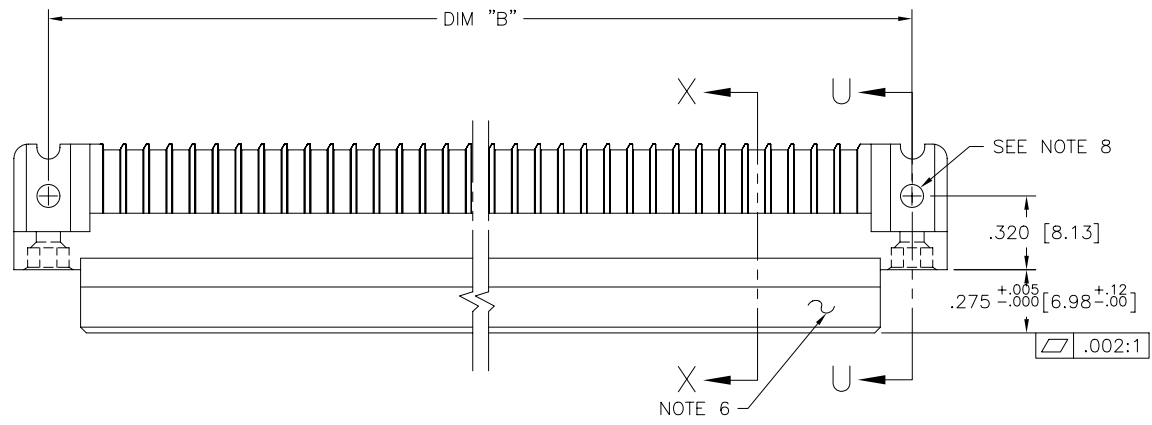




Copyright FCI

PRODUCT NUMBER
SEE NOTE 1



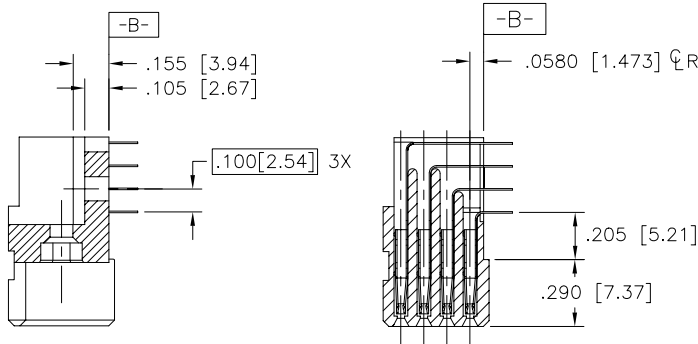
mat'l. code NOTE 3		surface ISO 1302 <input checked="" type="checkbox"/>		tolerance ISO 406 ISO 1101		projection 		product family HPC	
ltr	ecn	no	dr	date	tolerances unless otherwise specified		title		
D	v31616	SRS	10/26/93		angles	linear	4 ROW, R/A RECEPT. ASS'Y		
E	v32163	GIP	12/08/93				S.T., 0 G.P., HI-DURABILITY		
F	v70964	MSC	6/26/97		$\sigma \pm 2'$		scale 1:1		
G	v90117	SAR	1/28/99	dr	D, SHEAFFER	1/07/91	dwg no		
H	v00253	JWS	1/12/00	enr	S. CLARK	1/07/91	sheet 1 of 3 size		
J	v01354	LSS	6/22/00	chr	S. CLARK	1/07/91	50201 A3		
K	M06-0255	MNR	7/07/06	appd	S. CLARK	1/07/91	type Product Customer Drawing		
sheet	revision	K	K	K					
index	sheet	1	2	3					

form: A3

PRODUCT NUMBER	DIM.	LENGTH FORMULAS
SEE NOTE 1	DIM A	.100/2.54 X NO. OF COLUMNS + .75/19.1
	DIM B	.100/2.54 X NO. OF COLUMNS + .450/11.43
	DIM C	.100/2.54 X NO. OF COLUMNS - .100/2.54

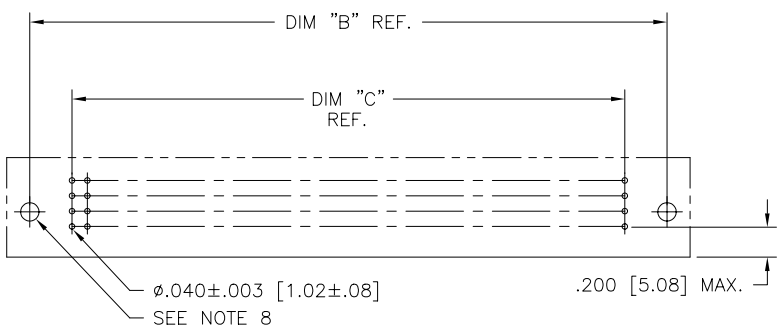
NOTES:

- PRODUCT NUMBERING CODE:
50201 - 7 YYY Z S
 - 7: SPECIAL FEATURES(NOTE 8)
 - YYY: TAIL LENGTH(NOTE 5)
 - Z: NO. OF POSITIONS(NOTE 2)
 - S: PLATING(NOTE 4)
 - S: BASE NUMBER
- THIS PRODUCT IS CONFIGURED IN SIZES OF 6 thru 80 COLUMNS IN INCREMENTS OF ONE.
i.e.: 6,7,8,9.....79,80.
- HOUSING MATERIAL: GLASS AND MINERAL FILLED HIGH TEMP THERMOPLASTIC FLAME RETARDANT PER UL 94 V-0
CONTACT MATERIAL: BeCu
- PLATING, CONTACT AREA:
7 = 60u"/1.52u GXT
ALL SOLDER TAILS TIN/LEAD
- TAIL LENGTH OPTIONS:
E = .125±.010 / 3.18±.25
F = .145±.010 / 3.68±.25
H = .180±.010 / 4.57±.25
- MANUFACTURER'S NAME, P/N AND LOT CODE TO APPEAR ON THIS SURFACE.
- FOR DOCUMENTATION MENU, SEE BUS-01-057.
- SPECIAL FEATURES: (SEE SHEET 3)
 - = IF CODE IS OMITTED FROM PRODUCT NO.; CONNECTOR IS PROVIDED AS SHOWN, NO SPECIAL FEATURES ARE SELECTED FOR P.C.B. ATTACHMENT IN A .120[3.05] MOUNTING HOLE.
 "A" = IF SPECIFIED, PRE-INSTALLED CLAW FOR P.C.B. ATTACHMENT IN A ϕ .100 MOUNTING HOLE. (AVAILABLE IN "E" TAIL LENGTH ONLY).
 "B" = IF SPECIFIED, PRE-INSTALLED CLAW FOR P.C.B. ATTACHMENT IN A ϕ .120 MOUNTING HOLE.
 "C" = IF SPECIFIED, MOLDED GUIDE PINS w/CLAW FOR P.C.B. ATTACHMENT IN A ϕ .120 MOUNTING HOLE.
- CLAW DIMENSION DETERMINED BY PCB. HOLE DIAMETER.



SECTION U-U
NO SPECIAL FEATURE

SECTION X-X



RECOMMENDED PCB LAYOUT
(ALL HOLES LOCATED ON .100 [2.54] GRID UNLESS OTHERWISE SPECIFIED)

mat'l. code		surface		tolerance		projection		product family		
-		ISO 1302 ✓		ISO 406		ISO 1101		HPC		
ltr	ecn	no	dr	date		tolerances unless otherwise specified		title		
K						angles linear		4 ROW, R/A RECEPT. ASS'Y		
						.xx ±.01/.3		S.T., 0 G.P., HI-DURABILITY		
						.xxx ±.005/.13		dwg no		
						.xxxx ±.0020/.051		sheet 2 of 3 size		
						scale 1:1		A3		
				dr		D. SHEAFFER		1/07/91		
				enrg		S. CLARK		1/07/91		
				chr		S. CLARK		1/07/91		
				appd		S. CLARK		1/07/91		
sheet	revision									
index	sheet									

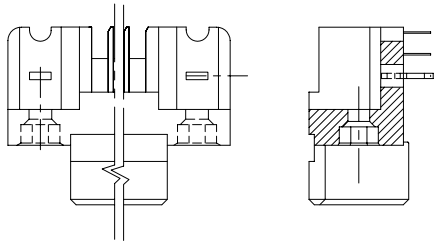


Copyright FCI

PRODUCT NUMBER

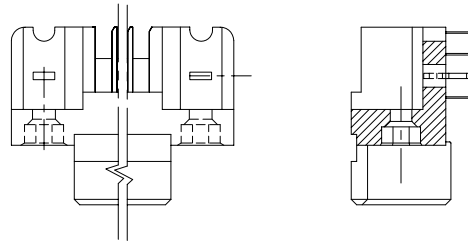
SEE SHEET 1

SPECIAL FEATURE OPTION A



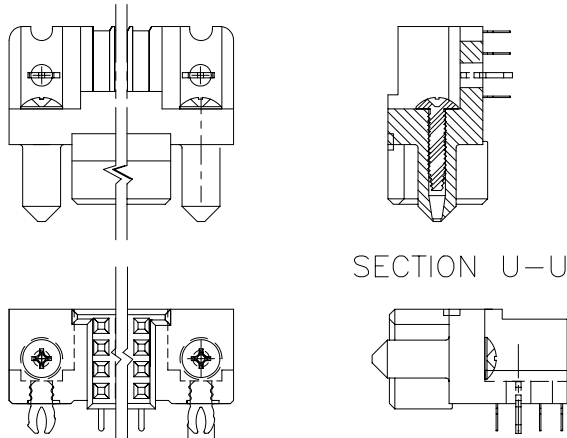
SECTION U-U
(FROM SOURCE DOCUMENT)

SPECIAL FEATURE OPTION B



SECTION U-U
(FROM SOURCE DOCUMENT)

SPECIAL FEATURE OPTION C



SECTION U-U

NOTE 9

mat'l. code		surface		tolerance		projection		product family	
-		ISO 1302 ✓		ISO 406 ISO 1101				HPC	
ltr	ecm	no	dr	date		tolerances unless otherwise specified		title	
K						.xx ±.01/.3 .xxx ±.005/.13 .xxxx ±.0020/.051		INCH/MM scale 1:1	
						angles linear $\sigma \pm 2^\circ$		4 ROW, R/A RECEPT. ASS'Y S.T., 0 G.P., HI-DURABILITY	
						dr D. SHEAFFER 1/07/91 engr S. CLARK 1/07/91 chr S. CLARK 1/07/91 appd S. CLARK 1/07/91		dwg no 50201 sheet 3 of 3 size A3	
sheet index		revision sheet						type Product Customer Drawing	