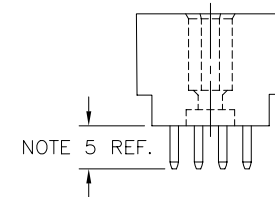
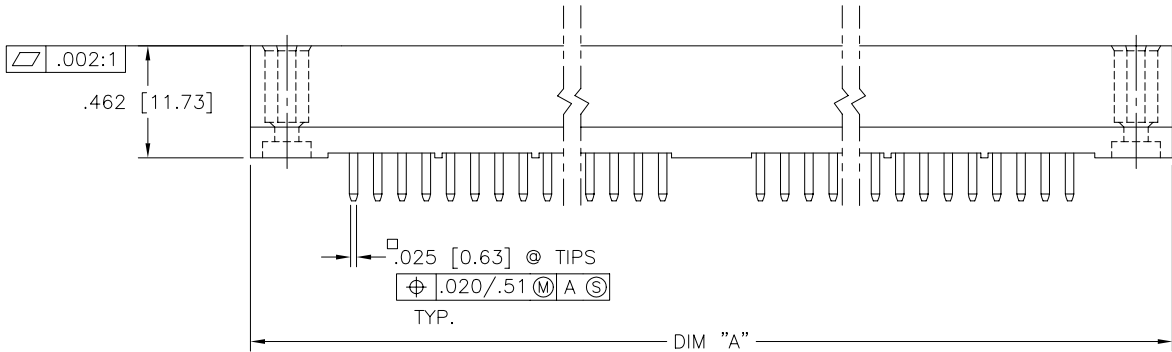
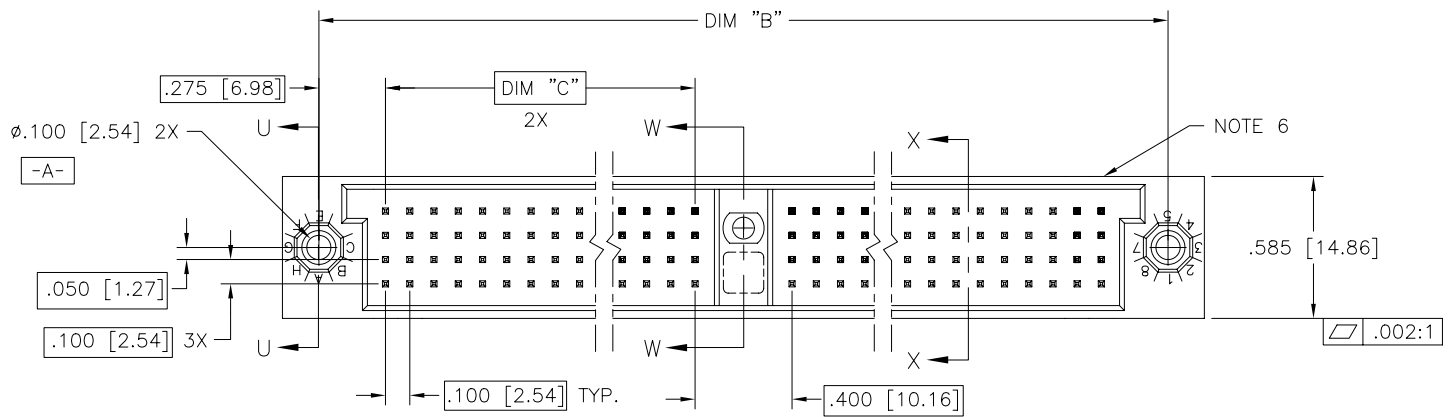




Copyright FCI

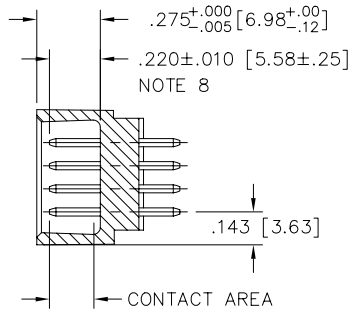
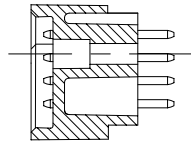
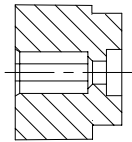
PRODUCT NUMBER  
SEE NOTE 1



mat'l. code NOTE 3		surface ISO 1302 ✓		tolerance ISO 406 ISO 1101		projection INCH/MM		product family HPC	
ltr		ecn no		date		tolerances unless otherwise specified		title	
A	v40730	PDP	4/11/94	angles	linear	.xx ±.01/.3	INCH/MM	4 ROW VERTICAL HEADER	
B	v40941	PDP	6/01/94			.xxx ±.005/.13		DUPLEX S.T.B. PINS, 1 G.P.	
C	v41072	GAH	7/05/94	σ±2'		.xxxx ±.0020/.051	scale 1:1	dwg no	
D	v50207	LSS	2/17/95	dr	P. PARSONS	4/12/94		sheet 1 of 2 size	
E	v90158	HTB	2/22/99	enfr	J. AFTON	4/11/94		50777 A3	
F	v00277	JWS	2/03/00	chr	G. PETERS	4/15/94		type Product Customer Drawing	
G	M06-0261	AEA	6/11/06	appd	S. CLARK	4/18/94			
sheet index	revision	G	G						
	sheet	1	2						

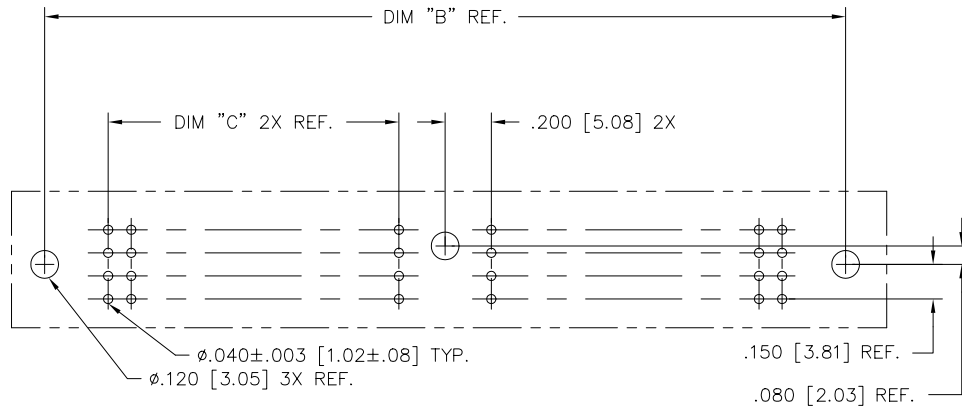
form: A3

PRODUCT NUMBER	DIM.	LENGTH FORMULAS
SEE NOTE 1	DIM "A"	.100/2.54 x NO. OF COLUMNS +1.050/26.67
	DIM "B"	.100/2.54 x NO. OF COLUMNS +.750/19.05
	DIM "C"	.100/2.54 x NO. OF COLUMNS DIVIDED BY 2 -.100/2.54



SECTION U-U SECTION W-W

SECTION X-X



RECOMMENDED PCB LAYOUT  
(ALL HOLES LOCATED ON .100/2.54 GRID  
UNLESS OTHERWISE SPECIFIED)

NOTES:

- ① PRODUCT NUMBERING CODE:  
50777 - X YYY Z  
TAIL LENGTH (NOTE 5)  
NO. OF POSITIONS (NOTE 2)  
PLATING (NOTE 4)  
BASE NUMBER

- PRODUCT NUMBERING CODE FOR  
SELECT LOAD PART NUMBERS:  
50777 - XYYYY  
SEQUENCE NUMBER  
ALWAYS 'XX'  
BASE NUMBER

- ② THIS PRODUCT IS CONFIGURED IN SIZES OF 20 thru 122  
COLUMNS IN INCREMENTS OF TWO.  
i.e.: 20,22,24,26,.....118,120,122.

- ③ HOUSING MATERIAL: GLASS AND MINERAL FILLED  
HIGH TEMP. THERMOPLASTIC. FLAME RETARDANT PER  
UL94V-0. COLOR: BLACK  
PIN MATERIAL: PHOS BRONZE

- ④ PLATING OPTIONS:

A = 50u" Ni UNDER ALL WITH 30u" Au ON CONTACT  
AREA, SnPb ON PCB INTERFACE AND Au FLASH  
ON ALL OTHER AREAS.

B = 50u" Ni UNDER ALL WITH 30u" GXT ON CONTACT  
AREA, SnPb ON PCB INTERFACE AND Au FLASH  
ON ALL OTHER AREAS.

- ⑤ TAIL LENGTH OPTIONS:

A = .177/4.5  
J = .120/3.05

- ⑥ MANUFACTURE'S NAME, PART NUMBER AND LOT CODE TO  
APPEAR ON THIS SURFACE PER BUS-12-108.

7. FOR DOCUMENTATION MENU, SEE BUS-01-057.

- ⑧ REFERENCE 50811 FOR F.M.L.B. AVAILABLE OPTIONS  
AND WORKSHEET.

mat'l. code		surface		tolerance		projection		product family	
-		ISO 1302 ✓		ISO 406		ISO 1101		HPC	
ltr		ecn no dr		date		tolerances unless otherwise specified		title	
G						.xx ±.01/.3 .xxx ±.005/.13 σ±2' .xxxx ±.0020/.051		4 ROW VERTICAL HEADER DUPLEX S.T.B. PINS, 1 G.P.	
						INCH/MM		dwg no	
						scale 1:1		sheet 2 of 2 size	
		dr		P. PARSONS		4/12/94		50777	
		enr		J. AFTON		4/11/94		A3	
		chr		G. PETERS		4/15/94		type	
		appd		S. CLARK		4/18/94		Product Customer Drawing	
sheet index		revision sheet							