

*** 1007 Series ***

RoHS COMPLIANT

Material:

* Insulator: Thermalplastic PA46 UL94V-0

* Terminal: Phosphor bronze C5191

Electrical:

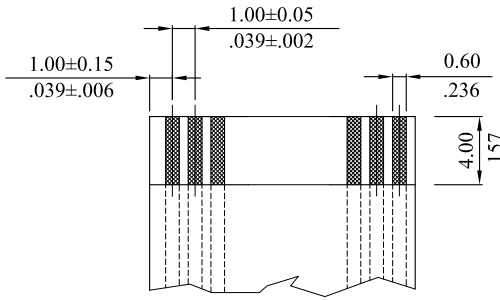
* Current Rating: 0.5A

* Contact Resistance: 30mΩ Max.

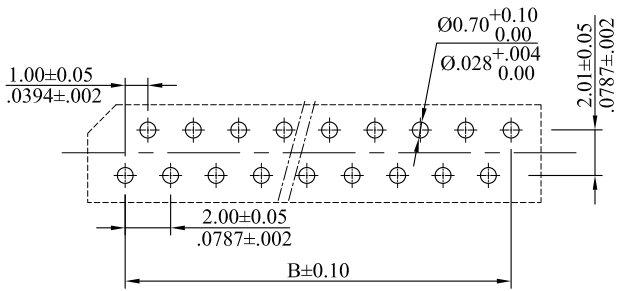
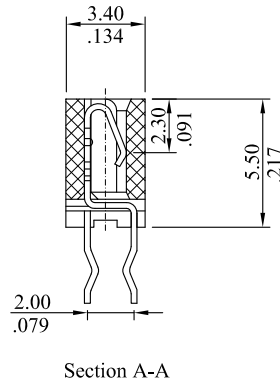
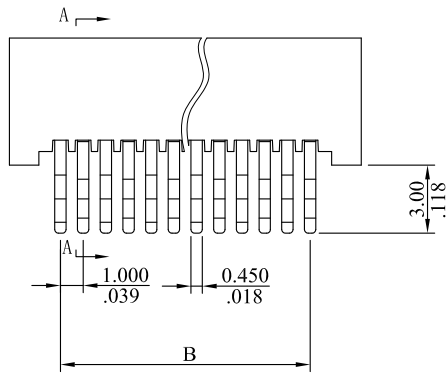
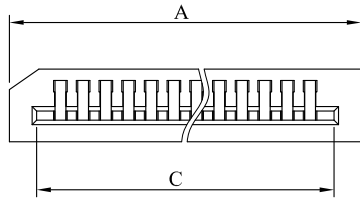
* Withstanding Voltage: 500V

* Insulator Resistance: 500MΩ Min.

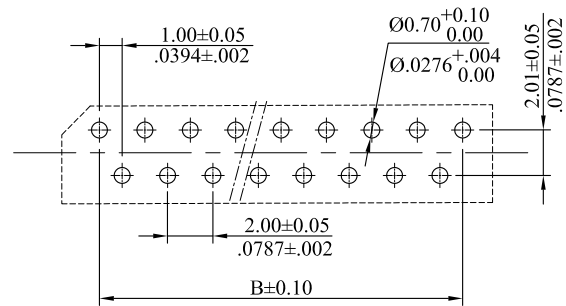
* Temperature Rating : -20°C to +85°C



Recommended FFC/FPC Pattern
Thickness 0.3mm (.012")



PCB Layout
TYPE I



PCB Layout
TYPE II

				LEOCO CORPORATION		APPROVED:		PART NO.:																			
				GENERAL TOLERANCES: (UNLESS SPECIFIED)		DATE:		1007S**VT*A																			
D	ES110110					CHECKED:						TITLE: 1.0mm(.039") Pitch FFC/FPC Connector															
C	ES101209			mm inch		DATE:		DRAWING NO.:																			
B	ES061038			1 PLACE	± 0.30	± --	DRAWN:					100702S															
A	DWG REL			2 PLACES	± 0.20	± .012	DATE:		<table border="1" style="width: 100%; border-collapse: collapse;"> <tr> <td style="width: 10%;"></td> <td style="width: 10%; text-align: center;">UNITS</td> <td style="width: 10%;">SCALE</td> <td style="width: 10%;">SIZE</td> <td style="width: 10%;">SHEET</td> <td style="width: 10%;">REV.</td> </tr> <tr> <td style="text-align: center;">REV.</td> <td style="text-align: center;">ECO. NO.</td> <td style="text-align: center;">CHG.</td> <td style="text-align: center;">APP.</td> <td style="text-align: center;">mm inch</td> <td style="text-align: center;">3:1</td> <td style="text-align: center;">A4</td> <td style="text-align: center;">1/2</td> <td style="text-align: center;">D</td> </tr> </table>								UNITS	SCALE	SIZE	SHEET	REV.	REV.	ECO. NO.	CHG.	APP.	mm inch	3:1
	UNITS	SCALE	SIZE	SHEET	REV.																						
REV.	ECO. NO.	CHG.	APP.	mm inch	3:1	A4	1/2	D																			
				3 PLACES	± 0.10	± .008																					
				4 PLACES	± --	± .004																					
				ANGULAR ± (1°)																							

Ordering Information :

RoHS COMPLIANT

1007S ** V T 0 A
 $\frac{1}{2} \frac{3}{A}$

1. No. of circuits

2. Plating:

T= Tin plated 100~200u" over 50~100u" nickel overall

3. Type of layout:

0=Type I layout

1=Type II layout

Circuits	Dim.A	Dim.B	Dim.C
04	7.50(.295)	3.00(.118)	5.10(.201)
05	8.50(.335)	4.00(.157)	6.10(.240)
06	9.50(.374)	5.00(.197)	7.10(.280)
07	10.50(.413)	6.00(.236)	8.10(.319)
08	11.50(.423)	7.00(.276)	9.10(.358)
09	12.50(.492)	8.00(.315)	10.10(.398)
10	13.50(.531)	9.00(.354)	11.10(.437)
11	14.50(.571)	10.00(.394)	12.10(.476)
12	15.50(.610)	11.00(.433)	13.10(.516)
13	16.50(.650)	12.00(.472)	14.10(.555)
14	17.50(.689)	13.00(.512)	15.10(.594)
15	18.50(.728)	14.00(.551)	16.10(.634)
16	19.50(.768)	15.00(.591)	17.10(.673)
17	20.50(.807)	16.00(.630)	18.10(.713)
18	21.50(.846)	17.00(.669)	19.10(.752)
19	22.50(.886)	18.00(.709)	20.10(.791)
20	23.50(.925)	19.00(.748)	21.10(.831)
21	24.50(.965)	20.00(.787)	22.10(.870)
22	25.50(1.004)	21.00(.827)	23.10(.909)
23	26.50(1.043)	22.00(.866)	24.10(.949)
24	27.50(1.083)	23.00(.906)	25.10(.988)
25	28.50(1.122)	24.00(.945)	26.10(1.028)
26	29.50(1.161)	25.00(.984)	27.10(1.067)
27	30.50(1.201)	26.00(1.024)	28.10(1.106)
28	31.50(1.240)	27.00(1.063)	29.10(1.146)
29	32.50(1.280)	28.00(1.102)	30.10(1.185)
30	33.50(1.319)	29.00(1.142)	31.10(1.224)
31	34.50(1.358)	30.00(1.181)	32.10(1.268)
32	35.50(1.398)	31.00(1.220)	33.10(1.303)
33	36.50(1.437)	32.00(1.260)	34.10(1.343)
34	37.50(1.476)	33.00(1.299)	35.10(1.382)
35	38.50(1.516)	34.00(1.339)	36.10(1.421)

A

A

B

B

C


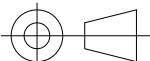
C

D

D

E

E

				 LEOCO CORPORATION			APPROVED:		PART NO.:				
D	ES110110			GENERAL TOLERANCES: (UNLESS SPECIFIED)			DATE:		1007S**VT*A				
C	ES101209						CHECKED:		TITLE: 1.0mm(.039") Pitch FFC/FPC Connector				
B	ES061038				mm	inch	DATE:		DRAWING NO.:				
A	DWG REL			1 PLACE	± 0.30	± --	DRAWN:						
				2 PLACES	± 0.20	± .012	DATE:		100702S				
				3 PLACES	± 0.10	± .008	DATE:						
REV.	ECO. NO.	CHG.	APP.	4 PLACES	± --	± .004			UNITS	SCALE	SIZE	SHEET	REV.
				ANGULAR ± (1°)			mm		3:1	A4	2/2	D	
					inch								