

FEATURES

UNPOLARIZED, SIZES 10 THROUGH 60 POSITIONS AVAILABLE.

"SINGLE BEAM" CONTACT DESIGN FOR EASIER MATING AND LOWER COST.

ACCEPTS 26 AND 28 AWG .050 PITCH RIBBON CABLE, (SEE PAGE D1).

STRAIN RELIEFS AND PULL TABS ARE AVAILABLE, SEE PAGES A13 AND A14.

STANDARD PLATINGS OF GOLD FLASH AND 15 μ GOLD DEPENDING ON YOUR DURABILITY NEEDS. NON-STANDARD PLATINGS ARE AVAILABLE, CONSULT FACTORY.

ACCEPTS 6300-0145 KEYING PLUG, CONSULT FACTORY FOR ORDERING INFORMATION.

COMPATIBLE WITH AUTOTERM HARNESS ASSEMBLY MACHINE.

SPECIFICATIONS:

MATERIALS & PLATING:

CONTACT:	BRASS
BODY & COVER:	GLASS FILLED POLYESTER, UL 94V-0, BLACK
PLATING:	SELECTIVE GOLD AND TIN/LEAD OVER 50 μ NICKEL

MECHANICAL:

INSERTION FORCE:	12 OZ. (340 GRAMS) MAX.
SEPARATION FORCE:	1 OZ. (28.4 GRAMS) MIN.
CONTACT RETENTION:	1 LB (454 GRAMS) MIN.

ELECTRICAL:

CURRENT RATING:	1 AMPERE
CONTACT RESISTANCE:	20 MILLIOHMS MAX. (INITIAL) 10 MILLIOHMS MAX INCREASE DURING LIFE
INSULATION RESISTANCE:	1000 MEGOHMS MIN.
DIELECTRIC WITHSTANDING VOLTAGE:	500 VAC

ENVIRONMENTAL:

TEMPERATURE RATING:	-55°C TO +105°C
---------------------	-----------------

9011185 0000018 T08

United States

Singapore

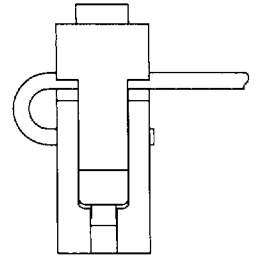
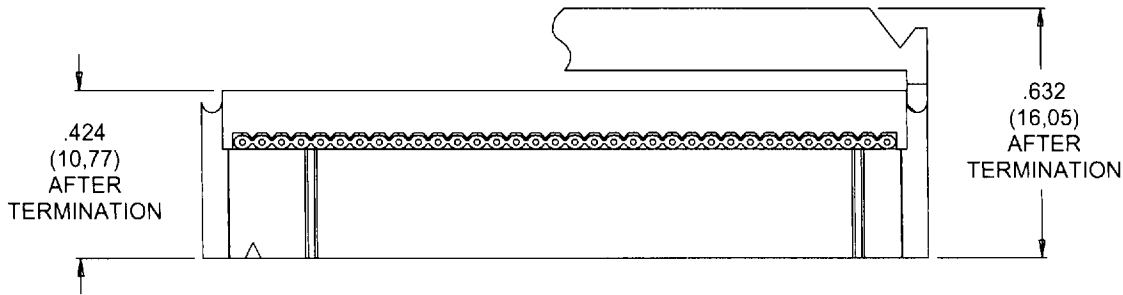
China

England

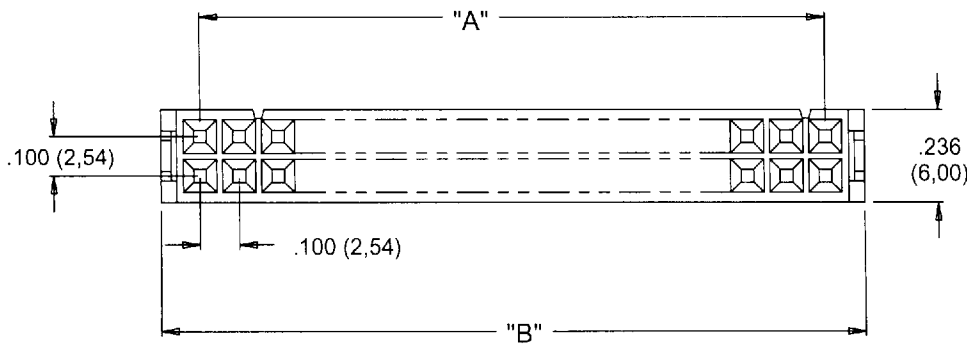
Korea

UNPOLARIZED VERSION

HOLLINGSWORTH



WITH STRAIN RELIEF
(ORDERED SEPARATELY)



SIZE	Part Numbers		Dimensions			
	Gold Flash	15 μ Gold	"A" Dim		"B" Dim	
10	6301-0101	6301-0102	.400	(10.16)	.680	(17.27)
14	6301-0141	6301-0142	.600	(15.24)	.880	(22.35)
16	6301-0161	6301-0162	.700	(17.78)	.980	(24.89)
20	6301-0201	6301-0202	.900	(22.86)	1.180	(29.97)
26	6301-0261	6301-0262	1.200	(30.48)	1.480	(37.59)
34	6301-0341	6301-0342	1.600	(40.64)	1.880	(47.75)
40	6301-0401	6301-0402	1.900	(48.26)	2.180	(55.37)
50	6301-0501	6301-0502	2.400	(60.96)	2.680	(68.07)
60	6301-0601	6301-0602	2.900	(73.66)	3.180	(80.77)

9011185 0000019 944

United States

Singapore

China

England

Korea

PAGE

A 12