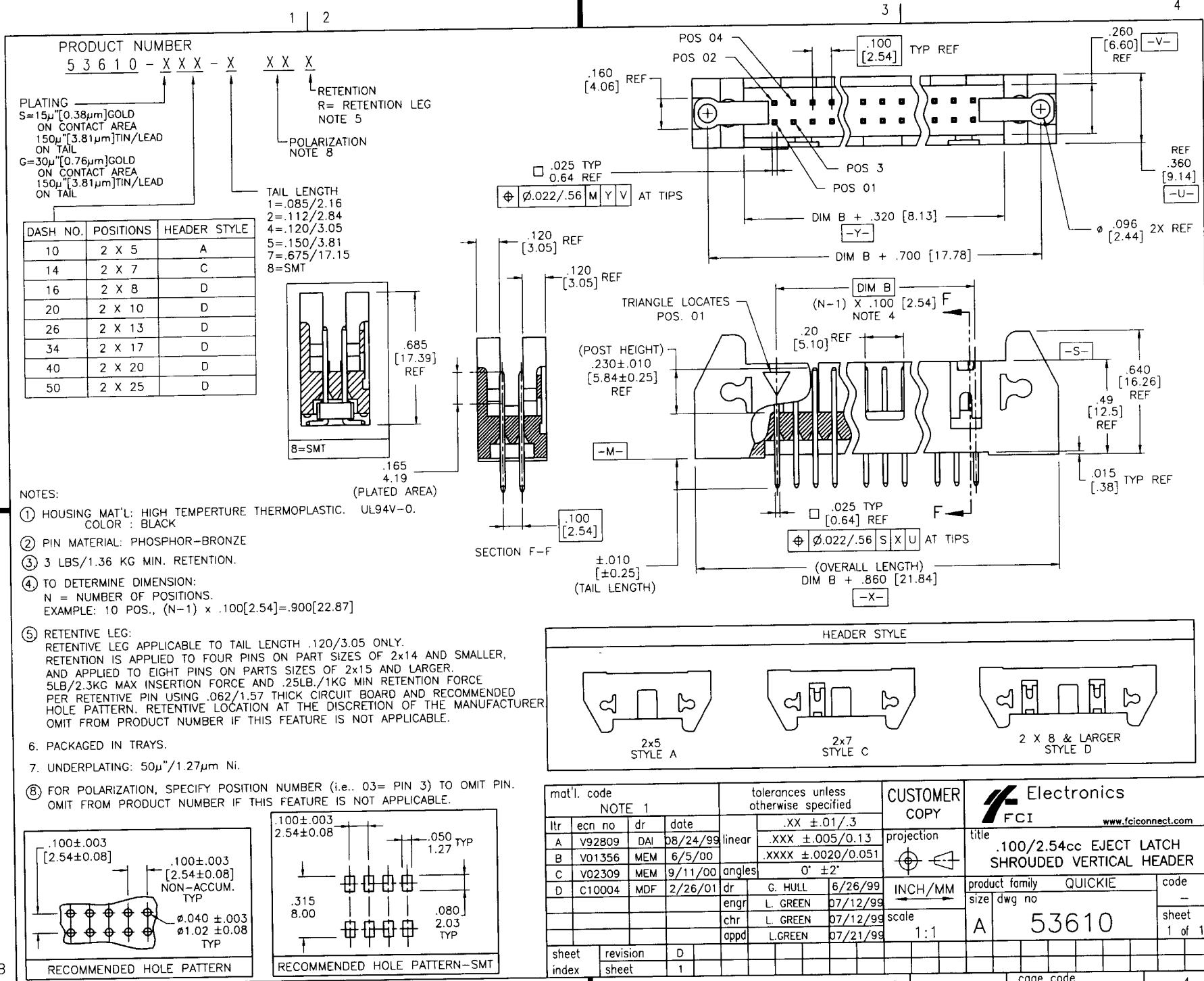


Tous droits strictement réservés. Reproduction ou communication à des tiers interdite sous quelque forme que ce soit sans autorisation écrite du propriétaire. Propriété de c FCI. Droits de reproduction FCI.

All rights strictly reserved. Reproduction or issue to third parties in any form whatever is not permitted without written authority from the proprietor. Property of FCI. Copyright FCI.



PRODUCT NUMBER  
5 3 6 1 0 - X X X - X X X X

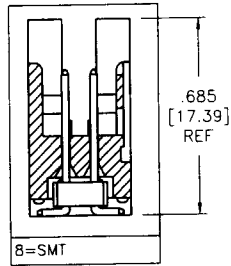
PLATING  
S=15µm [0.38µm] GOLD ON CONTACT AREA  
150µm [3.81µm] TIN/LEAD ON TAIL  
G=30µm [0.76µm] GOLD ON CONTACT AREA  
150µm [3.81µm] TIN/LEAD ON TAIL

RETENTION  
R= RETENTION LEG  
NOTE 5

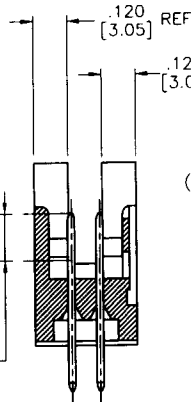
POLARIZATION  
NOTE 8

TAIL LENGTH  
1=.085/2.16  
2=.112/2.84  
4=.120/3.05  
5=.150/3.81  
7=.675/17.15  
8=SMT

DASH NO.	POSITIONS	HEADER STYLE
10	2 X 5	A
14	2 X 7	C
16	2 X 8	D
20	2 X 10	D
26	2 X 13	D
34	2 X 17	D
40	2 X 20	D
50	2 X 25	D



Ø.025 TYP  
0.64 REF  
Ø.022/.56 M Y V AT TIPS



.120 [3.05] REF

(POST HEIGHT)  
.230±.010 [5.84±0.25] REF

SECTION F-F

.100 [2.54]

±.010 [±0.25] (TAIL LENGTH)

TRIANGLE LOCATES POS. 01

(N-1) X .100 [2.54] F  
NOTE 4

.20 [5.10] REF

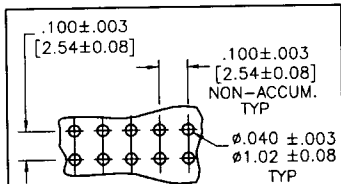
Ø.025 TYP [0.64] REF  
Ø.022/.56 S X U AT TIPS

(OVERALL LENGTH)  
DIM B + .860 [21.84]

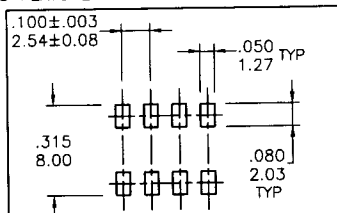
-X-

NOTES:

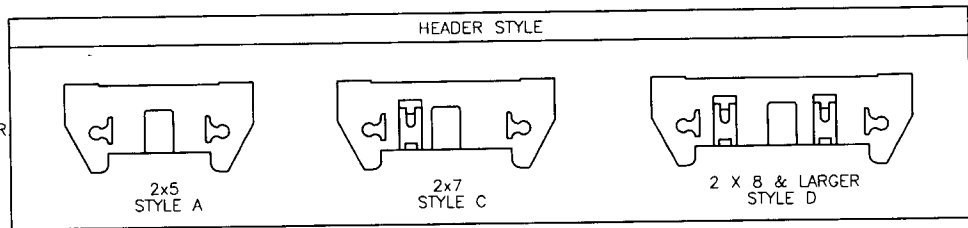
- HOUSING MAT'L: HIGH TEMPERATURE THERMOPLASTIC. UL94V-0. COLOR : BLACK
- PIN MATERIAL: PHOSPHOR-BRONZE
- 3 LBS/1.36 KG MIN. RETENTION.
- TO DETERMINE DIMENSION:  
N = NUMBER OF POSITIONS.  
EXAMPLE: 10 POS., (N-1) x .100[2.54]=.900[22.87]
- RETENTIVE LEG:  
RETENTIVE LEG APPLICABLE TO TAIL LENGTH .120/3.05 ONLY.  
RETENTION IS APPLIED TO FOUR PINS ON PART SIZES OF 2x15 AND SMALLER, AND APPLIED TO EIGHT PINS ON PARTS SIZES OF 2x15 AND LARGER.  
5LB/2.3KG MAX INSERTION FORCE AND .25LB/.1KG MIN RETENTION FORCE PER RETENTIVE PIN USING .062/1.57 THICK CIRCUIT BOARD AND RECOMMENDED HOLE PATTERN. RETENTIVE LOCATION AT THE DISCRETION OF THE MANUFACTURER OMIT FROM PRODUCT NUMBER IF THIS FEATURE IS NOT APPLICABLE.
- PACKAGED IN TRAYS.
- UNDERPLATING: 50µm/1.27µm Ni.
- FOR POLARIZATION, SPECIFY POSITION NUMBER (i.e., 03= PIN 3) TO OMIT PIN. OMIT FROM PRODUCT NUMBER IF THIS FEATURE IS NOT APPLICABLE.



RECOMMENDED HOLE PATTERN



RECOMMENDED HOLE PATTERN-SMT



mat'l. code				tolerances unless otherwise specified		CUSTOMER COPY		Electronics FCI	
NOTE 1						COPY		www.fciconnect.com	
ltr	ecn no	dr	date	linear	.XX ±.01/.3	projection	title		
A	V92809	DAI	08/24/99		.XXX ±.005/0.13		.100/2.54cc EJECT LATCH SHROUDED VERTICAL HEADER		
B	V01356	MEM	6/5/00	angles	.XXXX ±.0020/0.051		product family QUICKIE code		
C	V02309	MEM	9/11/00		0' ±2'	INCH/MM		size dwg no	
D	C10004	MDF	2/26/01	dr	G. HULL 6/26/99	scale		A 53610	
				enrg	L. GREEN 07/12/99	1:1		sheet 1 of 1	
				chr	L. GREEN 07/12/99				
				appd	L. GREEN 07/21/99				
sheet index	revision	D						cage code 22526	