

200G3 CONNECTOR SYSTEM

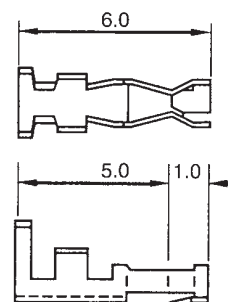
.079" (2.0mm) pitch wire(board)-to-board type



200G3-(1,2)H SERIES HOUSING

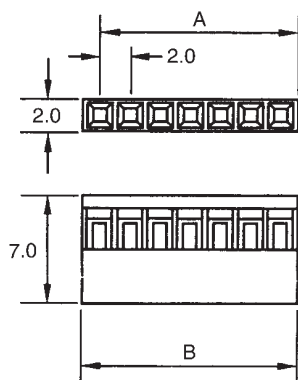
MATERIAL : PBT+30% GF UL 94V-0
 MATE WITH 200G3 SERIES PIN HEADER
 CURRENT RATING : 1A AC,DC
 VOLTAGE RATING : 250V AC,DC
 CONTACT RESISTANCE : 30m Ω MAX
 INSULATION RESISTANCE : 1000M Ω MIN
 WITHSTANDING VOLTAGE : 800V AC/MINUTE
 TEMPERATURE RANGE : -25°C TO +85°C

200G3-TP CRIMP TERMINAL

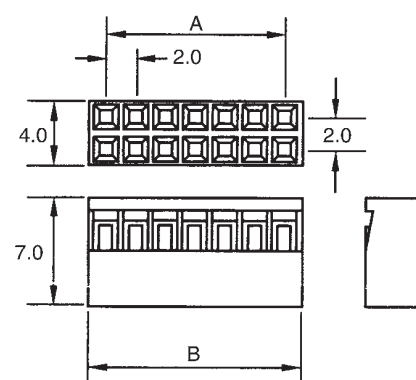


PART NO.	WIRE RANGE		MATERIAL/	THICKNESS	INSULATION	REEL
	AWG#	mm ²	FINISH	mm	O.D.(mm)	PCS
200G3-GP	26-30	0.1-0.05	PHOS/GOLD FLASH	0.20	0.9-1.3	10000

200G3-1H (1xN)



200G3-2H (2xN)



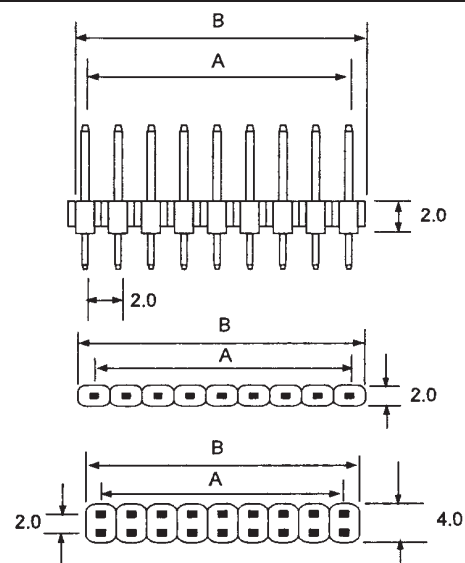
DIMENSIONS INFORMATION(mm)			DIMENSIONS INFORMATION(mm)			DIMENSIONS INFORMATION(mm)		
POLES	A	B	POLES	A	B	POLES	A	B
2(4)	2.0	4.0	15(30)	28.0	30.0	28(56)	54.0	56.0
3(6)	4.0	6.0	16(32)	30.0	32.0	29(58)	56.0	58.0
4(8)	6.0	8.0	17(34)	32.0	34.0	30(60)	58.0	60.0
5(10)	8.0	10.0	18(36)	34.0	36.0	31(62)	60.0	62.0
6(12)	10.0	12.0	19(38)	36.0	38.0	32(64)	62.0	64.0
7(14)	12.0	14.0	20(40)	38.0	40.0	33(66)	64.0	66.0
8(16)	14.0	16.0	21(42)	40.0	42.0	34(68)	66.0	68.0
9(18)	16.0	18.0	22(44)	42.0	44.0	35(70)	68.0	70.0
10(20)	18.0	20.0	23(46)	44.0	46.0	36(72)	70.0	72.0
11(22)	20.0	22.0	24(48)	46.0	48.0	37(74)	72.0	74.0
12(24)	22.0	24.0	25(50)	48.0	50.0	38(76)	74.0	76.0
13(26)	24.0	26.0	26(52)	50.0	52.0	39(78)	76.0	78.0
14(28)	26.0	28.0	27(54)	52.0	54.0	40(80)	78.0	80.0

200G3 CONNECTOR PIN HEADER

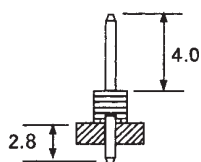
.079" (2.0mm) pitch wire(board)-to-board type



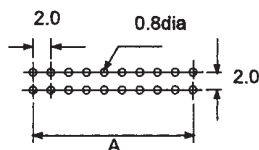
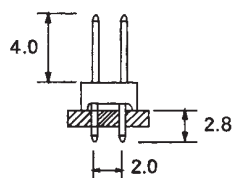
MATERIAL : PBT+30% GF UL 94V-0
 PIN BRASS GOLD FLASH
 CURRENT RATING : 1A AC,DC
 VOLTAGE RATING : 250V AC,DC
 CONTACT RESISTANCE : 30m δ MAX
 INSULATION RESISTANCE : 1000M δ MIN
 WITHSTANDING VOLTAGE : 800V AC/MINUTE
 TEMPERATURE RANGE : -25°C TO +85°C
 SQ PIN : 0.5 MM
 PC BOARD THICKNESS : 0.8 TO 1.6 MM



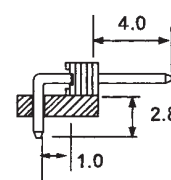
200G3-1V (1xN)



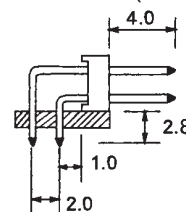
200G3-2V (2xN)



200G3-1L(1xN)



200G3-2L (2xN)



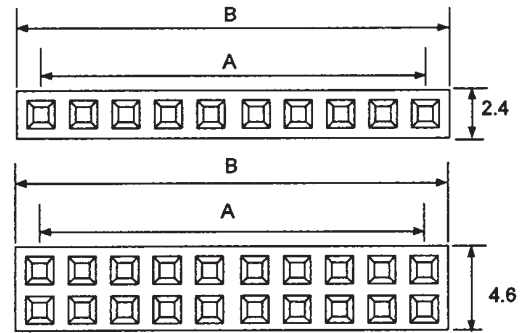
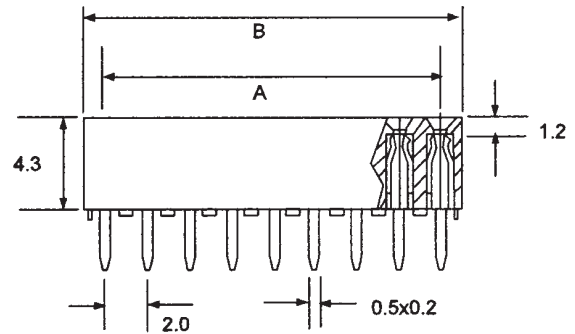
DIMENSIONS INFORMATION(mm)			DIMENSIONS INFORMATION(mm)			DIMENSIONS INFORMATION(mm)		
POLES	A	B	POLES	A	B	POLES	A	B
2(4)	2.0	4.0	15(30)	28.0	30.0	28(56)	54.0	56.0
3(6)	4.0	6.0	16(32)	30.0	32.0	29(58)	56.0	58.0
4(8)	6.0	8.0	17(34)	32.0	34.0	30(60)	58.0	60.0
5(10)	8.0	10.0	18(36)	34.0	36.0	31(62)	60.0	62.0
6(12)	10.0	12.0	19(38)	36.0	38.0	32(64)	62.0	64.0
7(14)	12.0	14.0	20(40)	38.0	40.0	33(66)	64.0	66.0
8(16)	14.0	16.0	21(42)	40.0	42.0	34(68)	66.0	68.0
9(18)	16.0	18.0	22(44)	42.0	44.0	35(70)	68.0	70.0
10(20)	18.0	20.0	23(46)	44.0	46.0	36(72)	70.0	72.0
11(22)	20.0	22.0	24(48)	46.0	48.0	37(74)	72.0	74.0
12(24)	22.0	24.0	25(50)	48.0	50.0	38(76)	74.0	76.0
13(26)	24.0	26.0	26(52)	50.0	52.0	39(78)	76.0	78.0
14(28)	26.0	28.0	27(54)	52.0	54.0	40(80)	78.0	80.0

200G3 FEMALE HEADER

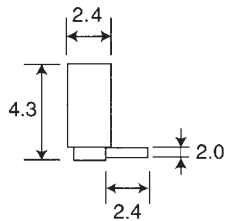
.079" (2.0mm) pitch (profile 4.3mm)



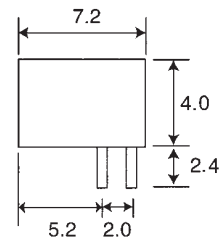
MATERIAL : PBT+30% GF UL 94V-0
 PIN BRASS GOLD FLASH
 MATEWITH : 200G3 SERIES PIN HEADER
 CURRENT RATING : 1A AC,DC
 VOLTAGE RATING : 250V AC,DC
 CONTACT RESISTANCE : 30m δ MAX
 INSULATION RESISTANCE : 1000M δ MIN
 WITHSTANDING VOLTAGE : 800V AC/MINUTE
 TEMPERATURE RANGE : -25°C TO +85°C



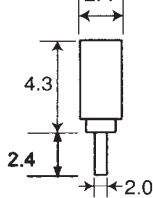
200G3-1FR (1xN)



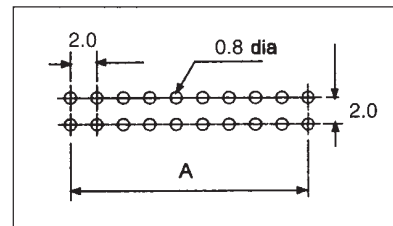
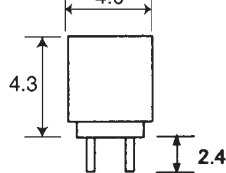
200G3-2FR (2xN)



200G3-1FV (1xN)



200G3-2FV (2xN)



DIMENSIONS INFORMATION(mm)			DIMENSIONS INFORMATION(mm)			DIMENSIONS INFORMATION(mm)		
POLES	A	B	POLES	A	B	POLES	A	B
2(4)	2.54	5.08	15(30)	35.56	38.10	28(56)	68.58	71.72
3(6)	5.08	7.62	16(32)	38.10	40.64	29(58)	71.72	73.66
4(8)	7.62	10.16	17(34)	40.64	43.18	30(60)	73.66	76.20
5(10)	10.16	12.70	18(36)	43.18	45.72	31(62)	76.20	78.74
6(12)	12.70	15.24	19(38)	45.72	48.26	32(64)	78.74	81.28
7(14)	15.24	17.78	20(40)	48.26	50.80	33(66)	81.28	83.82
8(16)	17.78	20.32	21(42)	50.80	53.34	34(68)	83.32	86.36
9(18)	20.32	22.86	22(44)	53.34	55.88	35(70)	86.36	88.90
10(20)	22.86	25.40	23(46)	55.88	58.42	36(72)	88.90	91.44
11(22)	25.40	27.94	24(48)	58.42	60.96	37(74)	91.44	93.98
12(24)	27.94	30.48	25(50)	60.96	63.50	38(76)	93.98	96.52
13(26)	30.48	33.02	26(52)	63.50	66.04	39(78)	96.52	99.06
14(28)	33.02	35.56	27(54)	66.04	68.58	40(80)	99.06	101.60