

TYPE NUMBER	PEAK INVERSE VOLTAGE	MAXIMUM AVERAGE DC OUTPUT CURRENT <sup>②</sup>		PEAK 1 CYCLE SURGE CURRENT $t_p = 8.3$ msec.	MAXIMUM FORWARD VOLTAGE (PULSED) PER LEG		MAXIMUM REVERSE CURRENT @ PIV/LEG		MAX. THERMAL RESIS. $R_{\theta JC}$	MAX. REVERSE RECOVERY TIME <sup>①</sup>	PKG. STYLE
		Amps			V	A	$\mu$ AMPS				
		55°C	100°C				25°C	100°C			
S425DA	200	6.0	3.6	60	1.2	3.0	5.0	100	12	30	425
S425GE	600	4.0	2.5	25	1.7	3.0	2.0	50	12	150	
S425IE	1000	2.5	1.5	20	1.8	.75	5.0	50	12	60	426
S425IH	1000	4.0	2.5	25	1.7	3.0	2.0	50	12	300	
S426DA	200	6.0	3.6	60	1.2	3.0	5.0	100	12	5000	426
S426GE	600	4.0	2.5	25	1.7	3.0	2.0	50	12	150	
S426IC	1000	2.5	1.5	20	1.8	.75	5.0	50	12	60	427
S426IE	1000	4.0	2.5	25	1.7	3.0	2.0	50	12	300	
S426IH	1000	5.0	3.0	50	1.4	3.0	2.0	50	12	5000	427
S427DA	200	3.0	1.8	60	1.2	3.0	5.0	100	12	30	
S427GE	600	2.0	1.25	25	1.7	3.0	2.0	50	12	150	427
S427IC	1000	1.25	.75	20	1.8	.75	5.0	50	12	60	
S427IE	1000	2.0	1.25	25	1.7	3.0	2.0	50	12	300	428
S427IH	1000	2.5	1.5	50	1.4	3.0	2.0	50	12	5000	
S428DA	200	3.0	1.8	60	1.2	3.0	5.0	100	12	30	428
S428GE	600	2.0	1.25	25	1.7	3.0	2.0	50	12	150	
S428IC	1000	1.25	.75	20	1.8	.75	5.0	50	12	60	428
S428IE	1000	2.0	1.25	25	1.7	3.0	2.0	50	12	300	
S428IH	1000	2.5	1.50	50	1.4	3.0	2.0	50	12	5000	

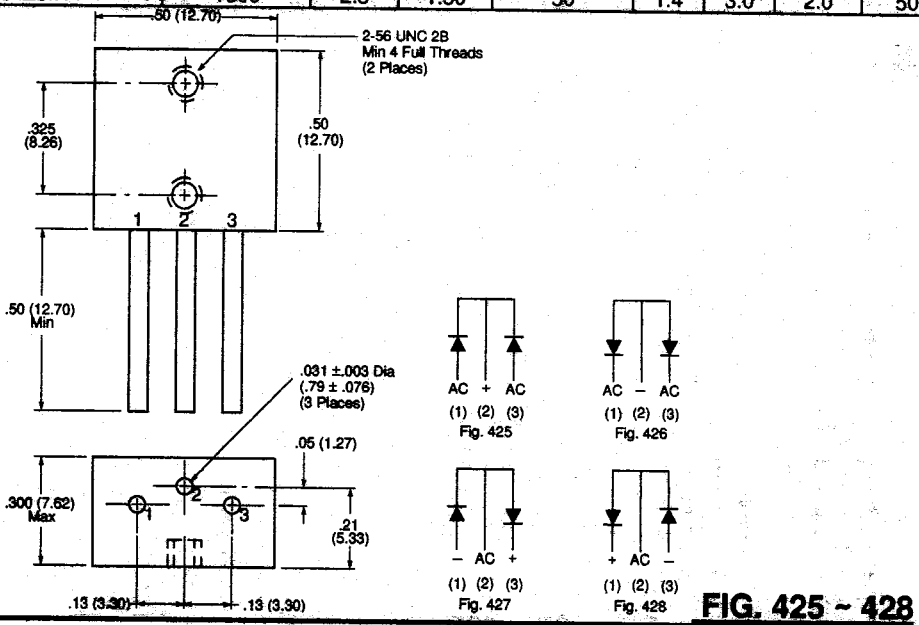


FIG. 425 ~ 428

▼150 Volt devices are available in; 50 & 100 Volt versions.  
 ▼1000 Volt devices are available in 200, 400, 600 & 800 Volt versions.

- Notes:**
- All ratings are at  $T_C = 25^\circ\text{C}$  unless otherwise specified.
  - Maximum operating and storage temperature range  $-55^\circ\text{C}$  to  $+150^\circ\text{C}$ .
  - ① Reverse recovery time conditions:  $I_f = 0.5\text{A}$ ,  $I_r = 1.0\text{A}$ ,  $t_{rr}$  measured when rectifier recovers to 0.25 Amps.
  - $t_{rr}$  measured on discrete rectifiers prior to assembly.
  - Add suffix L to the part number for leaded version; contact the factory for details.