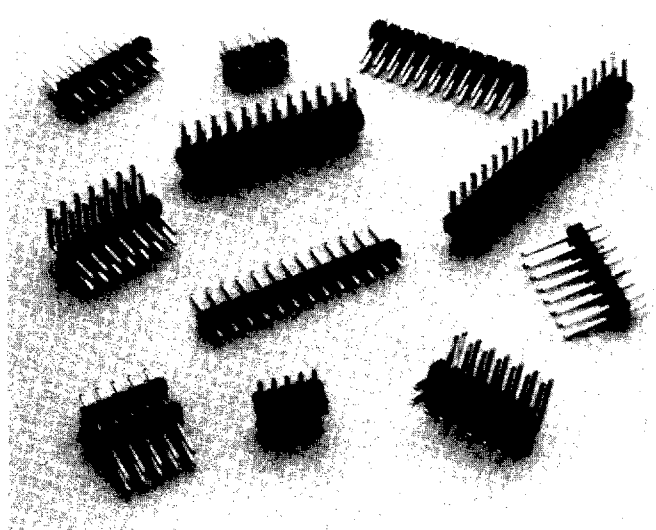


A-61-05-07

7.1



Garry's .025" square headers are available in straight and right angle configurations. The BRP1 has a .130", the BRP2 has a .230", and the BRP3 has a .318" above the board dimension. The single and dual row headers have the Garry "Breakaway" feature that allows you to "Snap-Off" a part to any length you need. Selective plating allows you to have gold on the contact surface and tin lead on the solder area.

- Pins are post plated with no exposed edges or tips.
- "Breakaway" feature allows you to carry only one size in stock and "Snap-Off" any number of pins per row you require.
- Straight, Right Angle, Single and dual row give you all the options you need.

**Material:**

**Insulator:**  
Glass filled thermoplastic polyester, rated UL94V-0.  
Color: Black.

**Pins:**  
Phosphor bronze, .025" square. Gold over nickel.  
Tin lead over nickel. Selective plating Gold/Tin.

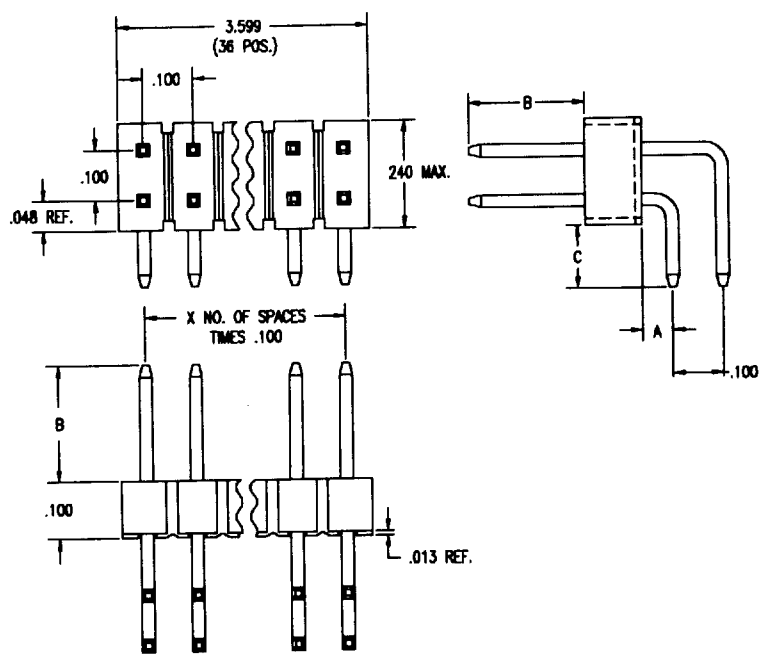
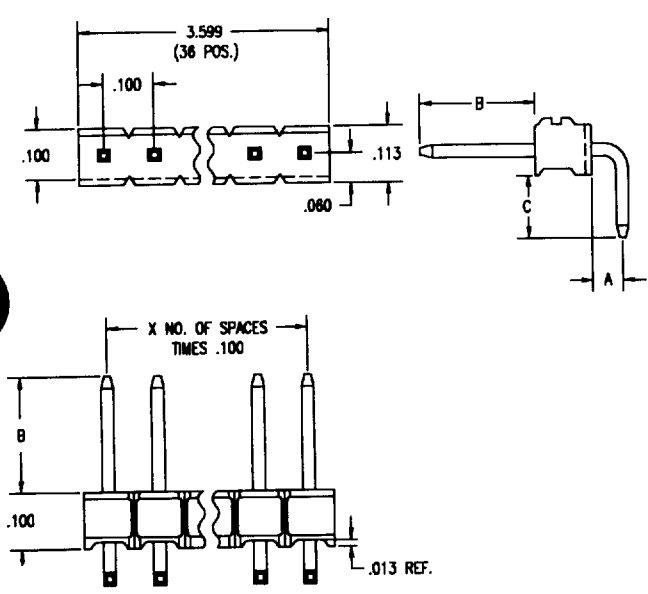
Plating options and specifications are available by contacting either the Garry factory or your local representative.

**Pin Header Assemblies** *Right Angle .025 Square Headers*

**Right Angle Single Row**

**Right Angle Dual Row**

7.3



BRPX - X - XX - X - X - XX

**SERIES**  
 BRP1 B Dim = .130  
 BRP2 B Dim = .230  
 BRP3 B Dim = .318

**NO. OF ROWS**  
 D = Dual  
 S = Single

**TOTAL NO. OF PINS**  
 2 - 40 Positions = Single  
 4 - 80 Positions = Dual

**TAIL CONFIGURATION**  
 R = Right Angle

PLATING	
T	Bright Acid Tin Over Ni
G1	Gold Over Ni
G2	Gold Over Ni on Mating Area; Balance Tin Plating

TAIL LENGTHS			
Order Code	A Dim	B Dim	C Dim
1	.060	.230	.100
2	.060	.230	.395
3	.060	.230	.695
4	.160	.230	.100
5	.160	.230	.400
6	.160	.230	.600
7	.060	.318	.110
8	.060	.130	.100
9	.160	.130	.100
10	.060	.318	.210