

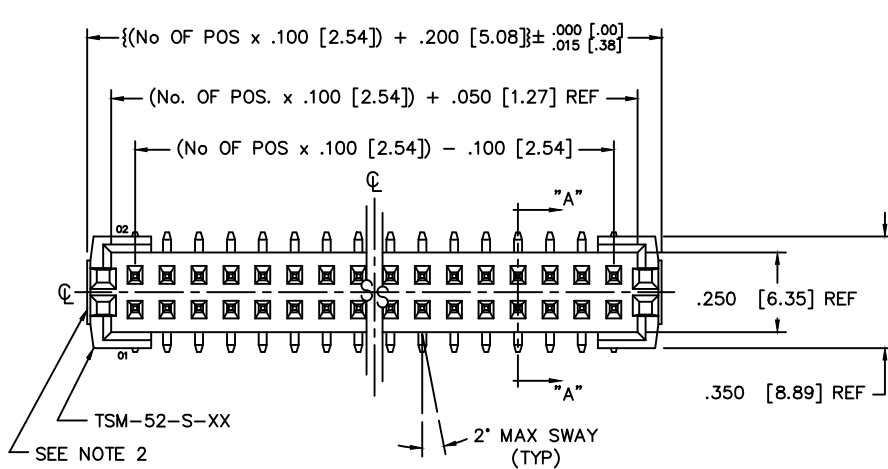
DIMENSIONS ARE IN INCHES UNLESS OTHERWISE NOTED		TOLERANCES ARE:
ONE PLACE DECIMALS $\pm .1[2.5]$	THREE PLACE DECIMALS $\pm .005[.13]$	ANGLES $\pm 2^\circ$
TWO PLACE DECIMALS $\pm .01[.3]$	FOUR PLACE DECIMALS $\pm .0020[.051]$	

TITLE: .100" C.L. SHROUDED TERMINAL ASSEMBLY

DWG NO: TSM-1XX-XX-XX-DV-S-XXX-XX
SHEET 1 OF 2

FIG. 1

DO NOT SCALE THIS DRAWING

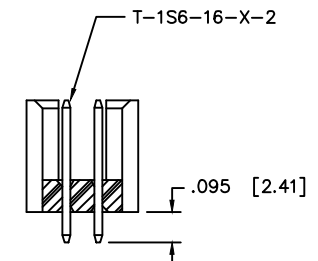
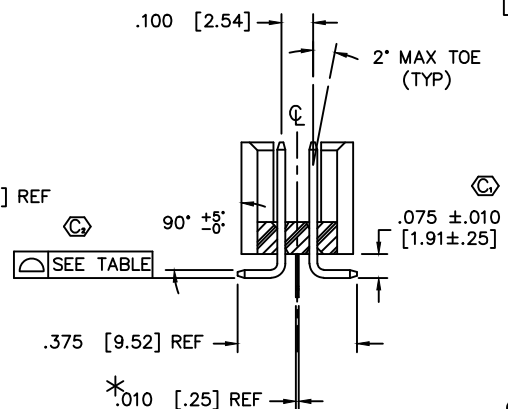
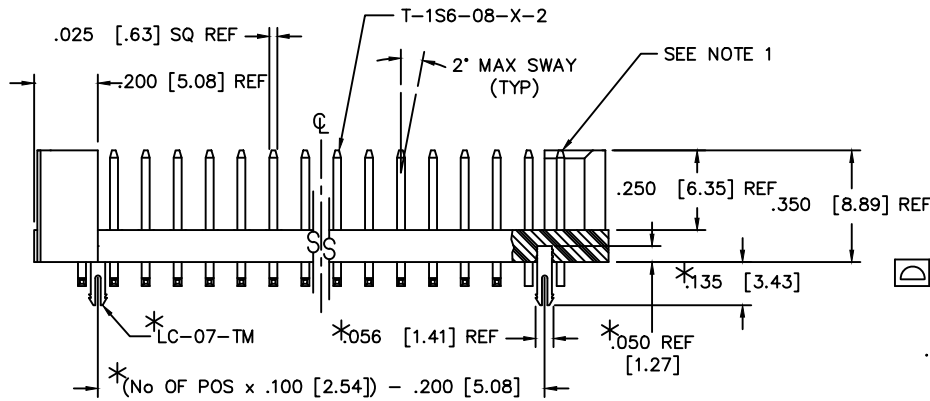


- TSM-1XX-XX-XX-DV-S-XXX-XX
- NO. OF POSITIONS
-02 THRU -36 (PER ROW)
(-02 THRU -04 SEE NOTE 4.)
- LEAD STYLE
-01
- PLATING
- S: 30μ" SELECTIVE GOLD IN CONTACT AREA, MATTE TIN ON TAIL
 - T: MATTE TIN CONTACT AND TAIL
 - G: 10μ" GOLD IN CONTACT AREA, 3μ" GOLD TAIL
 - F: 3μ" FLASH SELECTIVE GOLD IN CONTACT AREA, MATTE TIN ON TAIL
 - L: 10μ" LIGHT SELECTIVE GOLD IN CONTACT AREA, MATTE TIN ON TAIL
 - SM: 30μ" SELECTIVE GOLD IN CONTACT AREA, MATTE TIN ON TAIL
 - TM: MATTE TIN CONTACT AND TAIL
 - FM: 3μ" FLASH SELECTIVE GOLD IN CONTACT AREA, 3μ" GOLD ON TAIL
 - LM: 10μ" LIGHT SELECTIVE GOLD IN CONTACT AREA, MATTE TIN ON TAIL
- OPTION 2
- LC: LOCKING CLIP (SEE FIG 1) (SEE NOTE 5) (DV ONLY)
 - A: ALIGNMENT PIN (SEE FIG 2, SHEET 2) (DV ONLY)
 - P: PICK & PLACE PAD USE PPP-06 (SEE FIG 4) (POS. -05 THRU -36 DV ONLY)
 - M: METAL PICK & PLACE PAD USE LMP-01 (SEE FIG. 5) (DV ONLY) (-T, -TM PLATING WITH -M AVAILABLE TO EXISTING CUSTOMERS ONLY AS OF REV. R. DO NOT DESIGN IN)
 - TR: TAPE & REEL (-05 THRU -28 POS) (DV ONLY)
- OPTION 1
- POLARIZED POSITIONS SPECIFY OMITTED PINS

ROW SPECIFICATION
-DV: DOUBLE VERTICAL
*-TH: THROUGH HOLE
MOLDED END SHROUDS

COPLANARITY	
POSITION	
05-10	.004
11-24	.006
25-36	.008

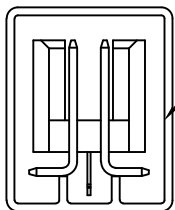
* NOT ENGINEERING APPROVED



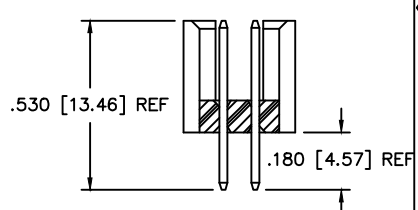
SECT. "A-A"
TH OPTION
(ALL DIMS SAME EXCEPT AS SHOWN)

(*) DIMENSIONS APPLY ONLY WHEN USING THE -LC OPTION.

- NOTE:
- TERMINALS TO BE FLUSH TO .010 BELOW TOP OF SHROUD.
 - MAXIMUM CUT FLASH ALLOWED IS .010" IN THIS AREA ONLY.
 - PACKAGE IN PT-1-24-01-58 TUBE WITH TP-13 PLUGS PER TUBE.
 - POS. -02 AND -03 MUST USE MPP-01 OR GRIPPERS WILL BE USED INSTEAD OF VACUUM.
 - DUE TO THE HIGH AMOUNT OF INSERTION FORCE NEEDED, THE -LC OPTION IS NOT COMPATIBLE WITH AUTO PLACEMENT. SAMTEC RECOMMENDS MANUAL PLACEMENT FOR ALL ASSEMBLIES WITH THE -LC OPTION.
 - (⊙) REPRESENTS A CRITICAL DIMENSION.
 - INSULATOR MATERIAL: BLACK, LCP, UL 94 VO



PACKAGING VIEW
(SEE NOTE 3)



IN-PROCESS
(DV ONLY)

PROPRIETARY NOTE
THIS DOCUMENT CONTAINS INFORMATION CONFIDENTIAL AND PROPRIETARY TO SAMTEC INC AND SHALL NOT BE REPRODUCED OR TRANSFERRED TO OTHER DOCUMENTS OR DISCLOSED TO OTHERS OR USED FOR ANY PURPOSE OTHER THAN THAT FOR WHICH IT WAS OBTAINED WITHOUT THE EXPRESSED WRITTEN CONSENT OF SAMTEC INC.

MISC WKTS
TSM-1XX-XX-XX-DV-S-XXX-XX-MKT1

samtec

520 PARK EAST BLVD. NEW ALBANY, INDIANA 47150
PHONE (812) 944-6733 P.O. BOX 1147
CODE 55322

MADE BY: BRATCHER 10-30-97

TSM-1XX-XX-XX-DV-S-XXX-XX
SHEET 1 OF 2

REV U

DIMENSIONS ARE IN INCHES		UNLESS OTHERWISE NOTED	TOLERANCES ARE:
ONE PLACE DECIMALS ±.1[2.5]	THREE PLACE DECIMALS ±.005[.13]	ANGLES ± 2°	
TWO PLACE DECIMALS ±.01[.3]	FOUR PLACE DECIMALS ±.0020[.051]		

TITLE:
 .100" C.L. SHROUDED
 TERMINAL ASSEMBLY

DWG NO:
 TSM-1XX-XX-XX-DV-S-XXX-XX
 SHEET 2 OF 2

**DO NOT SCALE
 THIS DRAWING**

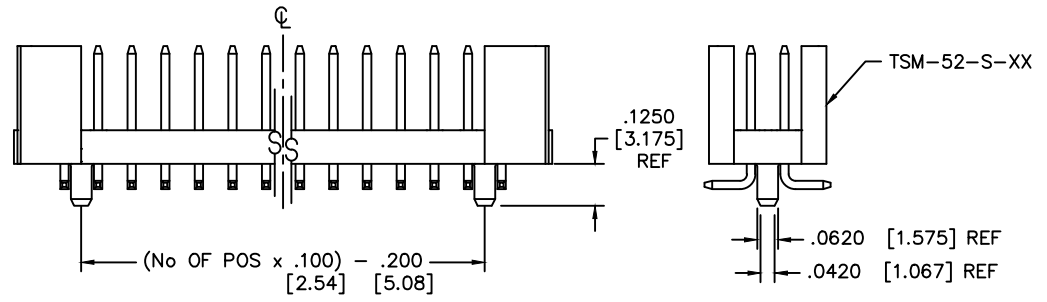


FIG. 2
 -A: ALIGNMENT PIN OPTION (MOLDED)
 DIFFERENT AS SHOWN. OTHERWISE SAME AS FIG. 1.

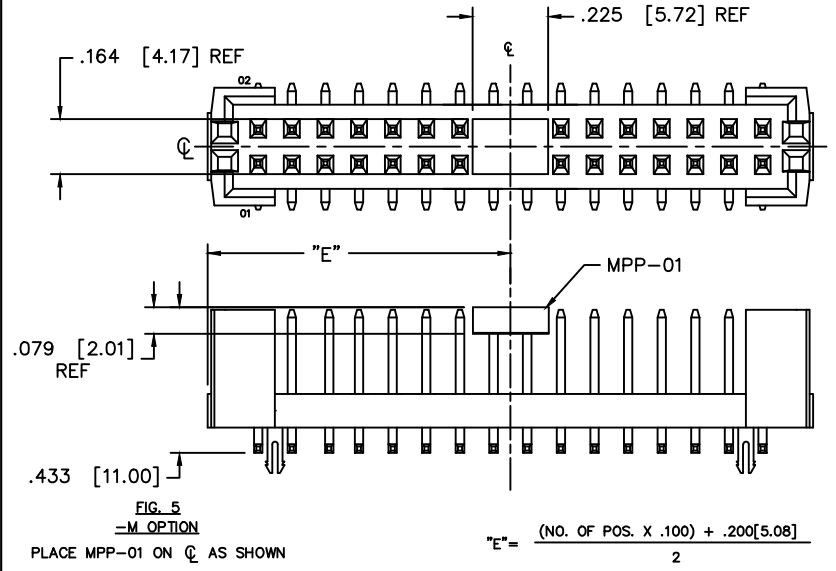
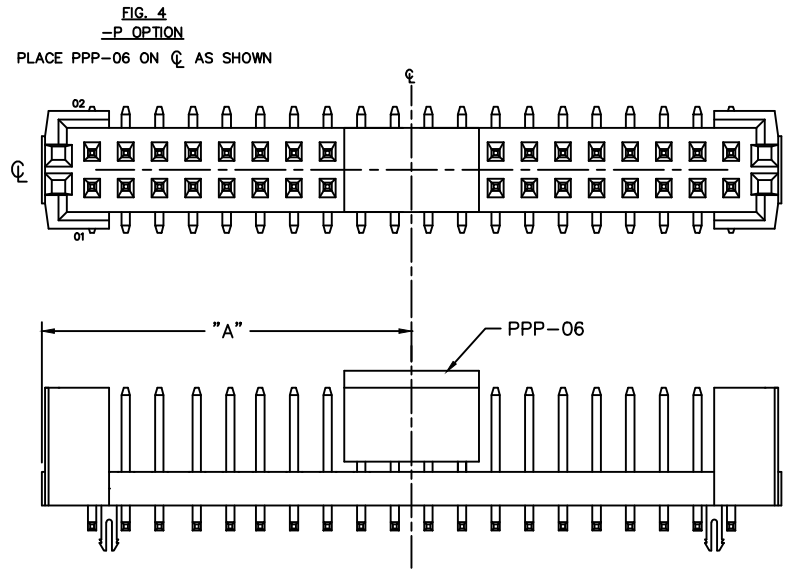


FIG. 5
 -M OPTION
 PLACE MPP-01 ON Q AS SHOWN



"A" = $\frac{(\text{NO. OF POS. X .100}) + .200[5.08]}{2}$

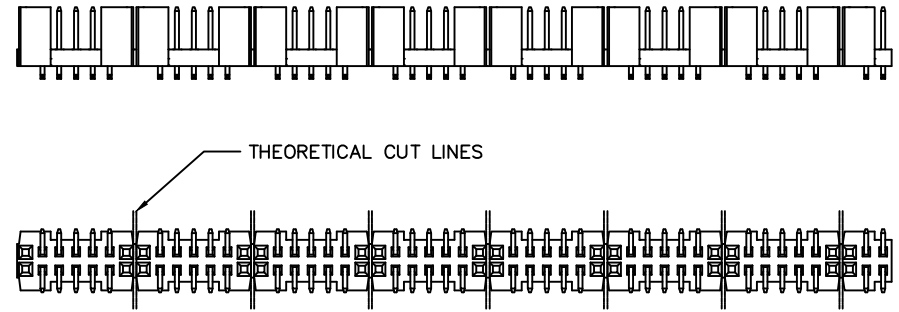


FIG. 3
 SCALE: .5X
 FULL STRIP VIEW

PLOT SCALE: 1 = .3

PROPRIETARY NOTE
 THIS DOCUMENT CONTAINS INFORMATION
 CONFIDENTIAL AND PROPRIETARY TO
 SAMTEC INC. AND SHALL NOT BE
 REPRODUCED OR TRANSMITTED TO
 OTHER DOCUMENTS OR DISCLOSED TO
 OTHERS OR USED FOR ANY PURPOSE
 OTHER THAN THAT FOR WHICH IT WAS
 OBTAINED WITHOUT THE EXPRESSED
 WRITTEN CONSENT OF SAMTEC INC.

EXISPROD\ASSEMBLY100
 TSM-ES2

samtec

520 PARK EAST BLVD. NEW ALBANY, INDIANA 47150
 PHONE (812) 944-6733 P.O. BOX 1147
 CODE 55322

MADE BY: BRATCHER 10-30-97

TSM-1XX-XX-XX-DV-S-XXX-XX
 SHEET 2 OF 2