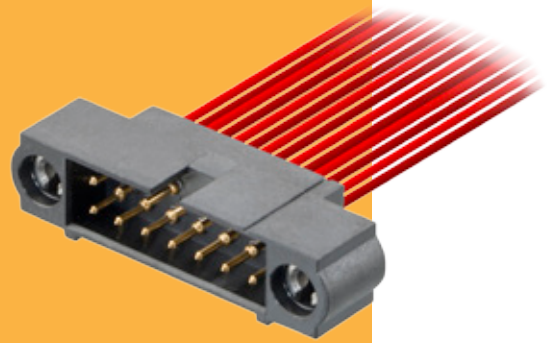


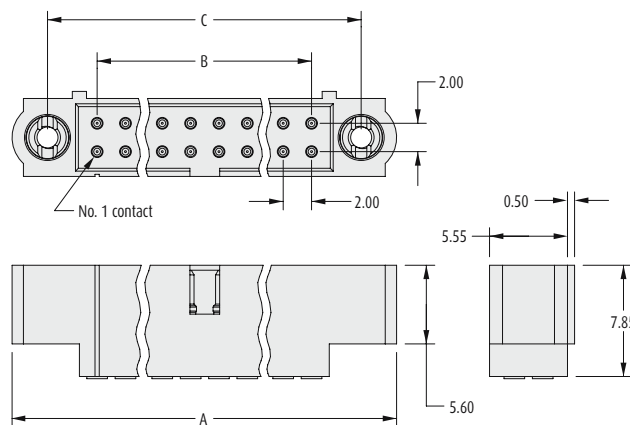
Male Crimp 101Lok

- ❖ Mates with female connectors shown on pages 39, 42, 47 and 50.
- ❖ Crimp contacts supplied loose.
- ❖ Crimp contacts are rear insertable and replaceable.
- ❖ Large Bore 22 AWG, Small Bore 24 – 28 AWG.
- ❖ Part numbers are for housings and the equivalent number of contacts.
- ❖ Spare contacts are available – see page 65.



DATAMATE J-TEK

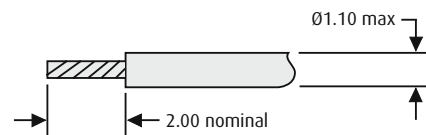
101LOK	CALCULATION
--------	-------------



A	B + 12
B	Total no. of contacts - 2
C	B + 7

TOOLS	WIRE STRIPPING DETAILS
-------	------------------------

Recommended Crimp Tool – M22520/2-01
Positioner – Z80-193
Contact Insertion/Removal Tool – Z80-280
 See pages 87 to 89
 ❖ Instruction sheets available at www.harwin.com/downloads/instructions



HOW TO ORDER

M80 - 5 X1 XX 05 MC

SERIES CODE			
TYPE			
C1 Small Bore 24-28 AWG			
D1 Large Bore 22 AWG			
TOTAL NO. OF CONTACTS			
04 to 50			
Even numbers only			
		JACKSCREW	
		MC	101Lok
		FINISH	
		05	Gold

All dimensions in mm.