

# BOARD MOUNT SOCKET (Low Profile)

### FEATURES

- Chamfered entry prevents pin stubbing
- High reliability tuning fork contact
- Insulator standoffs reduce rework due to flux residue
- Low profile allows tighter packaging
- Mates with Crane's PEG, MPEG, LPEG, and DPEG Headers

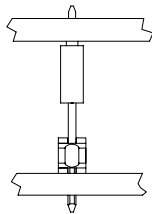
### STANDARD PART DIMENSIONS

INSULATOR BODY		Single Row	Dual Row
<b>W</b>	WIDTH	0.098" / 2,49mm	0.195" / 4,95mm
<b>H</b>	HEIGHT	0.225" / 5,72mm	0.225" / 5,72mm
<b>S</b>	STANDOFF	0.015" / 0,38mm	0.015" / 0,38mm
PC TAIL		Single Row	Dual Row
<b>L</b>	LENGTH	0.115" / 2,92mm	0.115" / 2,92mm
WIDTH x THICKNESS		0.030" / 0,76mm x 0.016" / 0,41mm	
MATERIALS			
INSULATOR BODY		Glass Filled Polyester (UL94V-O)	
CONTACT		Phosphor Bronze	

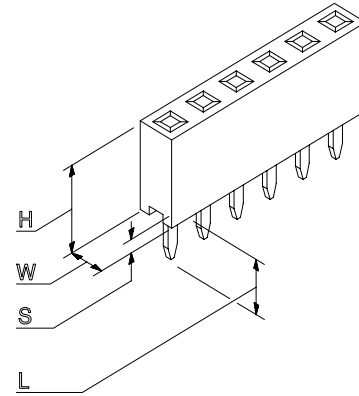
See SPECIFICATIONS and PERFORMANCE DATA for more information.

### Crane Really Stacks Up ... And DOWN!

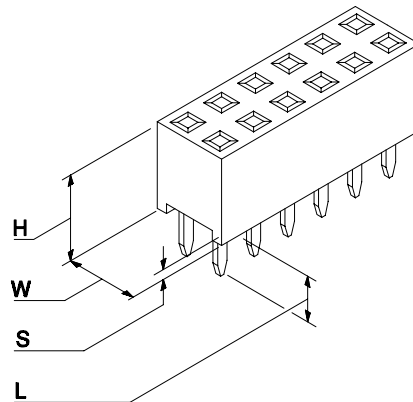
Crane's ATS Series board mount sockets team with Crane's Pin Strip Headers for board stacking combinations as high as 2.000", and as low as 0.225". When it comes to board stacking, we've got the ANSWERS!



### SINGLE ROW (1 to 32 Positions)



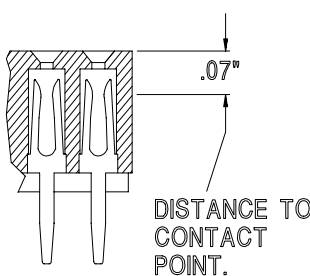
### DUAL ROW (2 to 64 Positions)



**SAMPLE HOTLINE: 1-800-676-7644**

0.100" (2,54mm) Centers To Mate With 0.025" (0,64mm) Square Mating Posts		HOW TO ORDER CRANE'S ATS SERIES							
		STANDARD PART NUMBER							OPT
<b>PRODUCT SERIES</b>	ATS					--			
<b>TOTAL NUMBER OF POSITIONS</b>	SINGLE	01-40							
	DUAL	02-80							
<b>NUMBER OF ROWS</b>	SINGLE		S						
	DUAL		D						
<b>TYPE OF SOCKET</b>	STRAIGHT			S					
<b>CONTACT PLATING</b>	CHOOSE G, T or H, F								
NOTE: Some platings may be subject to minimums									
<b>TAIL PLATING</b>	SAME AS CONTACT							C	
<b>CONTACT SPACING</b>	0.100" x 0.100" (2,54mm x2,54mm)								B
<b>BOARD RETENTION OPTION</b>	KINKED TAILS								K

### Benefits Of A Tuning Fork Contact

<ul style="list-style-type: none"> <li>Undamaged by multiple flexing</li> <li>High normal forces limit surface movement</li> <li>Foreign material cannot enter contact area (gas tight)</li> <li>High retention force without high insertion force</li> <li>Contact made on both sides of the mating pin</li> <li>Insertion range from 0.095" to 0.170"</li> </ul>	 <p style="font-size: small;">DISTANCE TO CONTACT POINT.</p>
--	---

**SAMPLE HOTLINE: 1-800-676-7644**

# CRANE CONNECTORS - PLATING SPECIFICATIONS

PLATING OPTIONS		CONTACT AREA Inches (Millimeters)	PC TAIL Inches (Millimeters)	UNDERPLATE Inches (Millimeters)
<b>G</b>	Selective	15 $\mu$ " (0,00038) Gold	100 $\mu$ " (0,00254) Tin/Lead - Min	50 $\mu$ " (0,00127) Nickel - Min.
<b>T</b>	Tin / Lead	100 $\mu$ " (0,00254) Tin / Lead	100 $\mu$ " (0,00254) Tin/Lead - Min	50 $\mu$ " (0,00127) Nickel - Min.
<b>M</b>	Selective	50 $\mu$ " (0,00127) Gold	100 $\mu$ " (0,00254) Tin/Lead - Min	50 $\mu$ " (0,00127) Nickel - Min.
<b>H</b>	Selective	30 $\mu$ " (0,00076) Gold	100 $\mu$ " (0,00254) Tin/Lead - Min	50 $\mu$ " (0,00127) Nickel - Min.
<b>L</b>	Selective	10 $\mu$ " (0,00025) Gold	100 $\mu$ " (0,00254) Tin/Lead - Min	50 $\mu$ " (0,00127) Nickel - Min.
<b>F</b>	Selective	3 $\mu$ " (0,00008) Gold	100 $\mu$ " (0,00254) Tin/Lead - Min	50 $\mu$ " (0,00127) Nickel - Min.

## STANDARDS

ISO9001



Crane Connectors  
File No. A-3620

Registered by UL to ISO9001 under UL's accreditation by Raad voor de Certificatie (RvC), the Dutch Council for Certification.

**ENGINEERING NOTE:** The information presented in this catalog page is accurate to the best of our knowledge. Due to ongoing efforts to advance design and material performance, the information is subject to change without notice.

**SAMPLE HOTLINE: 1-800-676-7644**

**CRANE CONNECTORS** • 4700 Smith Road • Cincinnati, Ohio 45212 USA • E-mail Address: info@craneconnectors.com  
Phone: (513) 631-4700 • Fax (513) 631-5700 • Toll Free US (800) 676-7644 • Canada (800) 420-7310