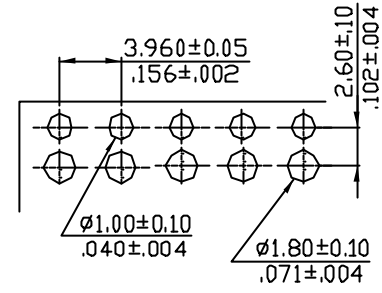
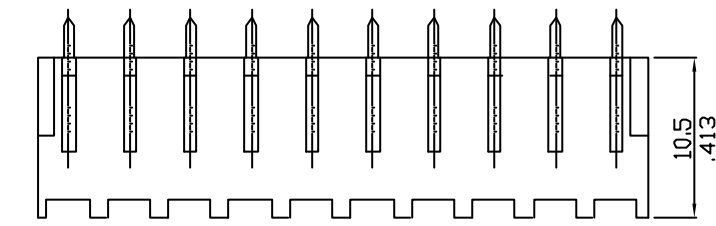
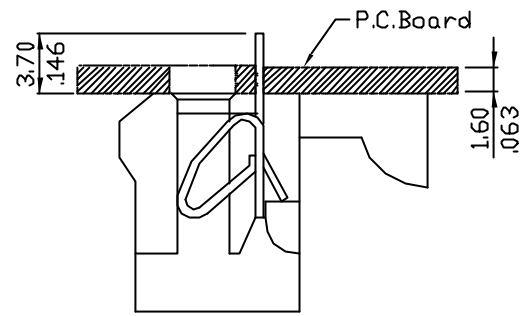
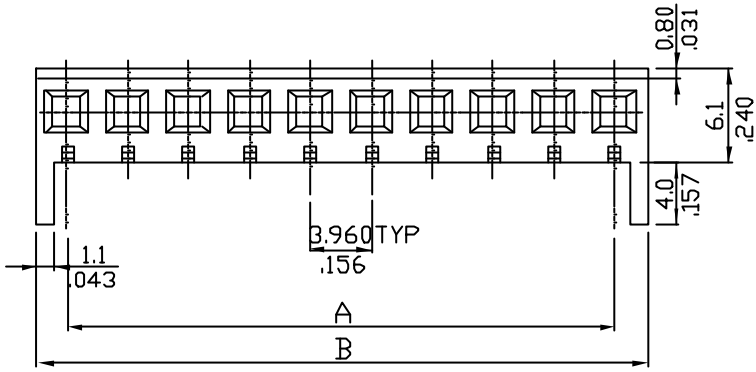


*** 3963 R Series ***
 Material :
 * Insulator : UL 94V-2 Nylon 6/6
 * Contact : Brass
 * Plating : Tin



RECOMMENDED HOLE PATTERN

CIRCUITS	PART NO.	DIMENSION	
		A	B
2	3963S02R000	3.960(.156)	7.8(.307)
3	3963S03R000	7.920(.312)	11.8(.465)
4	3963S04R000	11.880(.468)	15.7(.618)
5	3963S05R000	15.840(.624)	19.7(.776)
6	3963S06R000	19.800(.780)	23.6(.929)
7	3963S07R000	23.760(.936)	27.6(1.087)
8	3963S08R000	27.720(1.091)	31.6(1.244)
9	3963S09R000	31.680(1.248)	35.5(1.398)
10	3963S10R000	35.640(1.403)	39.5(1.555)
11	3963S11R000	39.600(1.560)	43.5(1.713)
12	3963S12R000	43.560(1.716)	47.4(1.866)
13	3963S13R000	47.520(1.871)	51.4(2.024)
14	3963S14R000	51.480(2.027)	55.3(2.177)
15	3963S15R000	55.440(2.183)	59.3(2.335)

LECO CORPORATION				APPROVED:		PART NO.:			
				GENERAL TOLERANCE		DATE:		3963S**R000	
X. ± X° ± 2' .X ± $\frac{0.30}{.012}$.X' ± 1' .XX ± $\frac{0.20}{.008}$.XX' ± 0.5' .XXX ± $\frac{0.10}{.004}$.XXX' ± 0.1'				CHECKED:		TITLE:			
				DATE:		HEADER			
A DWG REL				DRAWN:		DRAWING NO.:			
				DATE:		396302S			
REV.	ECO. NO.	CHG.	APP.		UNITS	SCALE	SIZE	SHEET	REV.
					mm Inch	~	A4	1/1	A