

DWG. NO. SJ 017443  
SYM 2

SYN. 2  
DCH NO. 24285  
REVISION REVISED INSULATOR COLOR  
DATE 7 SEP 88  
DRAWN FUJIHARA  
CHECKED  
APP'D  
APP'D

**FILED**

OCT 01 2001

DOCUMENT CONTROL

TABLE 1. PART NO. NO OF CONTACTS AND DIMENSIONS

PART NO.	NO. OF CONTACTS	DIMENSIONS	
		A	(B)
PS-1PF-S4TI-PK*	1	—	25.4 (.100)
2	2	25.4 (.100)	5.08 (.200)
3	3	5.08 (.200)	7.62 (.300)
4	4	7.62 (.300)	10.16 (.400)
5	5	10.16 (.400)	12.7 (.500)
6	6	12.7 (.500)	15.24 (.600)
7	7	15.24 (.600)	17.78 (.700)
8	8	17.78 (.700)	20.32 (.800)
9	9	20.32 (.800)	22.86 (.900)
10	10	22.86 (.900)	25.4 (1.000)
11	11	25.4 (1.000)	27.94 (1.100)
12	12	27.94 (1.100)	30.48 (1.200)
13	13	30.48 (1.200)	33.02 (1.300)
14	14	33.02 (1.300)	35.56 (1.400)
PS-15PF-S4TI-PK*	15	35.56 (1.400)	38.1 (1.500)

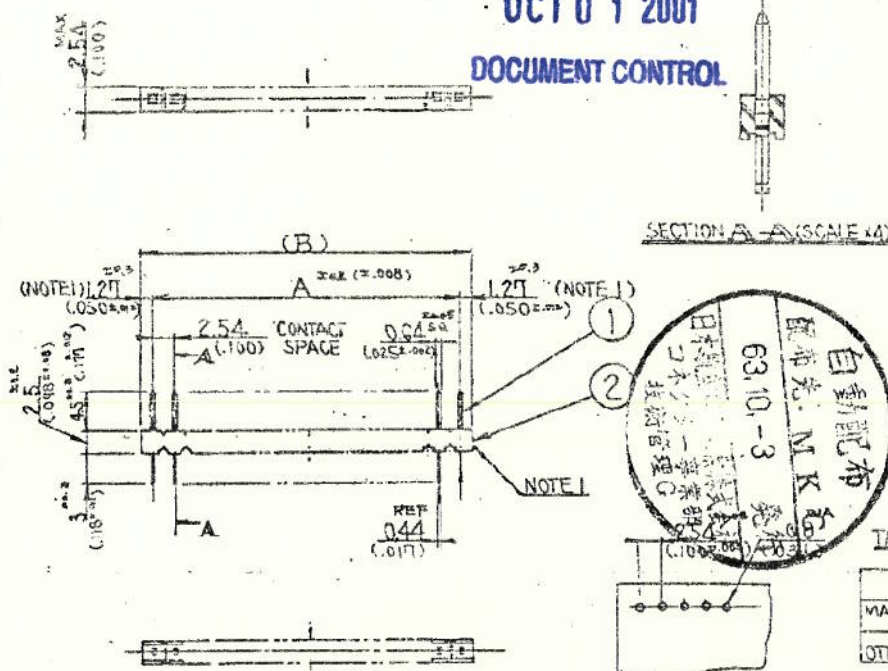


TABLE 2 CONTACT FINISH

*	1	2	3
MATING PORTION	GOLD FLASH	GOLD 10 MICRONS OVER NICKEL	GOLD 30 MICRONS OVER NICKEL
OTHER AREA	GOLD FLASH	GOLD FLASH	GOLD FLASH

NOTE 1. THIS SHOWS THE BOTH ENDS OF PIN HEADER. DIMENSIONS FOR INSTALLATION ON P.C BOARD.  
(ONLY 15 CONTACT PIN HEADER 1.27" (32.0))  
THE CONFIGURATION OF THE OTHER NUMBER OF CONTACT PIN HEADER IS OPTIONAL AS BEING MADE OF 15-CONTACT PIN HEADER.

2	INSULATOR	1	PHOSPHOR BRONZE	NONE	UL 94V-0
1	POST	SEE TABLE 1	P.P.S	SEE TABLE 2	
ITEM	DESCRIPTION	QTY	MATERIAL	FINISH	REMARK

UNLESS OTHERWISE SPECIFIED			DATE 29-June-1984	TITLE
DIMENSIONS ARE IN MILLIMETERS (INCHES)			DRAWN	PS-15PF-S4TI-PK* PIN HEADER
TOLERANCES OR (INCHES)			CHECKED	
FRACTIONS	DECIMALS	ANGLES	APP'D	
	±0.01	±0.04		
TREATMENT OR FINISH			APP'D	

JAPAN AVIATION ELECTRONICS  
IND. CO. LTD.  
FACTORY  
KAKAGANCHO, AKISHIMA-SHI  
TOKYO, JAPAN

DWG. NO. SJ 017443 - E

APPLICATION	USED ON	NEXT ASSY	FINAL ASSY

SCALE DWG. SIZE B WT.

SHEET

12/14/95  
21  
315