

Tous droits strictement réservés. Reproduction ou communication à des tiers interdite sous quelque forme que ce soit sans autorisation écrite du propriétaire. Propriété de c FCI. Droits de reproduction FCI.

All rights strictly reserved. Reproduction or issue to third parties in any form without prior written authority from the proprietor. Property of FCI. Copyright FCI.

PRODUCT NUMBER  
5 2 6 0 2 - X X X - X X X X

PLATING  
S=15μ [0.38μm] GOLD  
ON CONTACT AREA  
150μ [3.81μm] TIN/LEAD ON TAIL  
G=30μ [0.76μm] GOLD  
ON CONTACT AREA  
150μ [3.81μm] TIN/LEAD ON TAIL  
ON TAIL

RETENTION  
R= RETENTIVE LEG  
NOTE 6

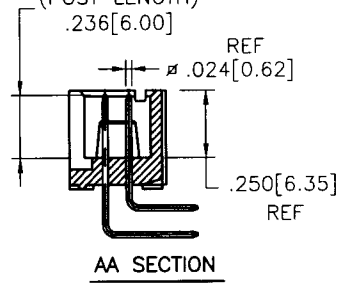
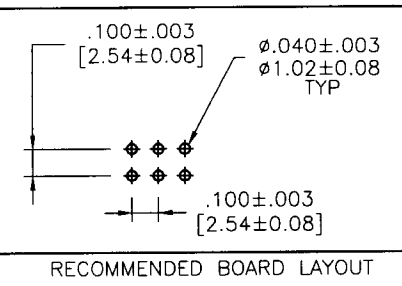
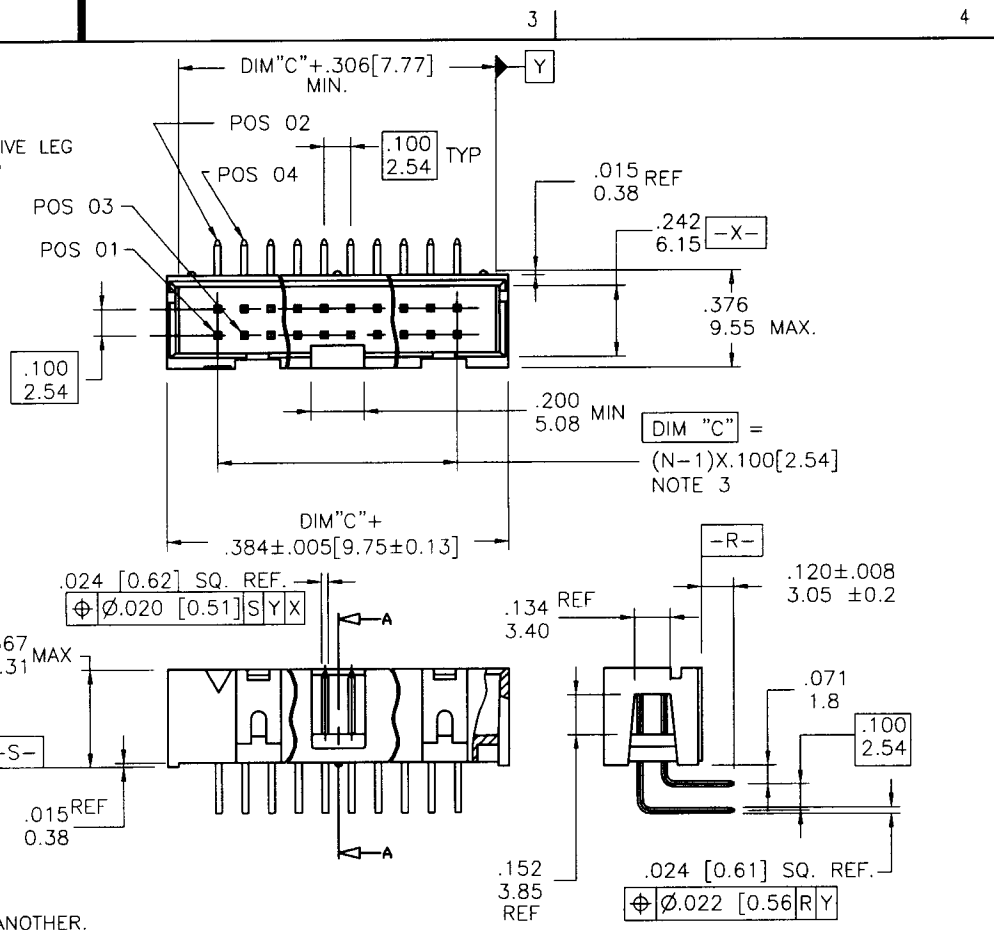
POLARIZATION  
NOTE 8

TAIL  
4= .120/3.05

TOTAL POSITIONS	
10	2 x 5
14	2 x 7
16	2 x 8
20	2 x 10
26	2 x 13
30	2 x 15
34	2 x 17
40	2 x 20
50	2 x 25
60	2 x 30

NOTES:

- HOUSING MAT'L: HIGH TEMPERATURE THERMOPLASTIC. UL94V-0  
COLOR: BLUE
- PIN MATERIAL: PHOSPHOR-BRONZE
- TO DETERMINE DIMENSIONS:  
N = NUMBER OF POSITIONS  
EXAMPLE: 10 POS., (N-1) x .100[2.54]=.900[22.87]
- 3 LBS./1.36 KG MIN. RETENTION
- PACKAGED IN TUBES.
- RETENTIVE LEG APPLICABLE TO TAIL LENGTH .120/3.05 ONLY.  
RETENTION IS APPLIED TO TWO PINS PER PART, ADJACENT TO ONE ANOTHER.  
5LB/2.3KG MAX INSERTION FORCE AND .25LB./1KG MIN RETENTION FORCE  
PER RETENTIVE PIN USING .062/1.57 THICK CIRCUIT BOARD AND RECOMMENDED  
HOLE PATTERN. RETENTIVE LOCATION AT THE DISCRETION OF THE MANUFACTURER.  
OMIT FROM PRODUCT NUMBER IF THIS FEATURE IS NOT APPLICABLE.
- UNDER PLATING: 50μ"/1.27μm Ni.
- FOR POLARIZATION SPECIFY POSITION NUMBER (i.e., A03=ROW A POS. 3)  
TO OMIT PIN.  
OMIT FROM PRODUCT NUMBER IF THIS FEATURE IS NOT APPLICABLE.  
(POST LENGTH)



mat'l. code NOTE 1 & 2		tolerances unless otherwise specified		CUSTOMER COPY	Electronics FCI www.fciconnect.com			
ltr	ecn no	dr	date	linear	projection	title		
A	V92809	DAI	08/24/99	.XX ± .01 / .X ± .3		.100/2.54mm LOW PROFILE SHROUDED R/A HEADER		
B	V94314	DAI	11/3/99	.XXX ± .005 / .XX ± .13			product family QUICKIE	code
C	V02361	AZ	09/27/00	.XXX ± .0020 / .XXX ± .051			size	dwg no
		angles		0° ± 2°	INCH/MM	52602	sheet 1 of 1	
		dr	D. INGRAM	07/07/99	scale			
		enrg	L. GREEN	07/12/99	1:1			
		chr	L. GREEN	07/12/99				
		appd	L. GREEN	07/21/99				
sheet index	revision sheet	C	1			cage code	22526	