

MITSUBISHI RF POWER TRANSISTOR

**2SC2627**

**NPN EPITAXIAL PLANAR TYPE**

**DESCRIPTION**

2SC2627 is a silicon NPN epitaxial planar type transistor designed for RF power amplifiers in VHF band mobile radio applications.

**FEATURES**

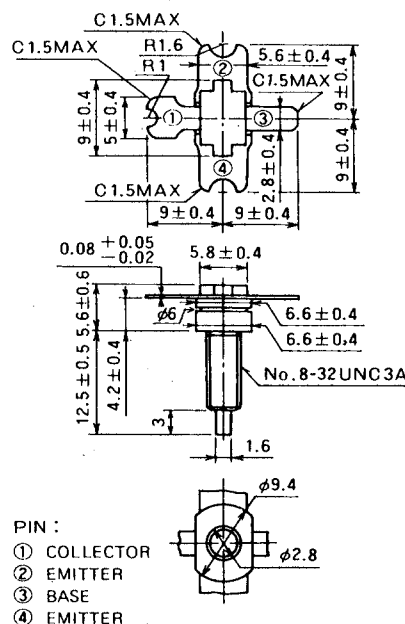
- High power gain:  $G_{pe} \geq 13\text{dB}$   
@  $V_{CC} = 12.5\text{V}$ ,  $P_O = 5\text{W}$ ,  $f = 175\text{MHz}$
- Emitter ballasted construction and gold metallization for high reliability and good performances.
- Low thermal resistance ceramic package with stud.
- Ability of withstanding more than 20:1 load VSWR when operated at  $V_{CC} = 15.2\text{V}$ ,  $P_O = 6\text{W}$ ,  $f = 175\text{MHz}$ ,  $T_C = 25^\circ\text{C}$ .
- Equivalent input/output series impedance:  
 $Z_{in} = 2.9 + j0.5\Omega$  @  $P_O = 6\text{W}$ ,  $V_{CC} = 12.5\text{V}$ ,  $f = 175\text{MHz}$   
 $Z_{out} = 11 - j1.9\Omega$

**APPLICATION**

4 to 5 watts output power amplifiers in VHF band mobile radio applications.

**OUTLINE DRAWING**

Dimensions in mm



**T-41** NOTE: ALL ELECTRODES ARE ISOLATED FROM FLANGE.

**ABSOLUTE MAXIMUM RATINGS** ( $T_C = 25^\circ\text{C}$  unless otherwise specified)

Symbol	Parameter	Conditions	Ratings	Unit
$V_{CB0}$	Collector to base voltage		35	V
$V_{EB0}$	Emitter to base voltage		4	V
$V_{CE0}$	Collector to emitter voltage	$R_{BE} = \infty$	17	V
$I_C$	Collector current		2	A
$P_C$	Collector dissipation	$T_a = 25^\circ\text{C}$	2	W
		$T_C = 25^\circ\text{C}$	20	W
$T_j$	Junction temperature		175	$^\circ\text{C}$
$T_{stg}$	Storage temperature		-55 to 175	$^\circ\text{C}$
$R_{th-a}$	Thermal resistance	Junction to ambient	75	$^\circ\text{C/W}$
$R_{th-c}$		Junction to case	7.5	$^\circ\text{C/W}$

Note. Above parameters are guaranteed independently.

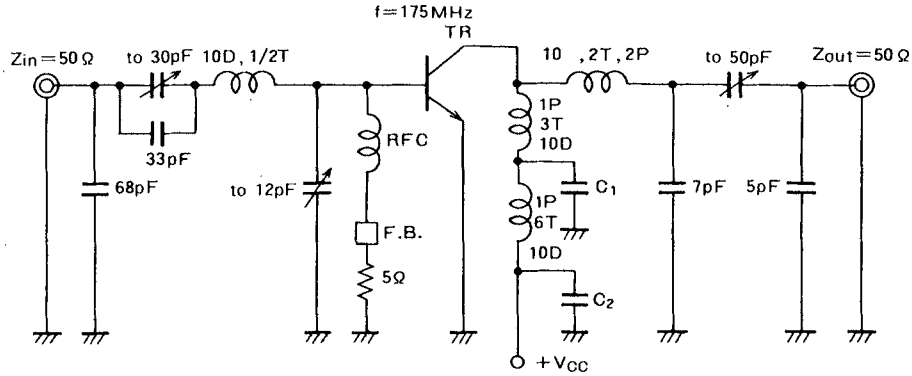
**ELECTRICAL CHARACTERISTICS** ( $T_C = 25^\circ\text{C}$  unless otherwise specified)

Symbol	Parameter	Test conditions	Limits			Unit
			Min	Typ	Max	
$V_{(BR)EB0}$	Emitter to base breakdown voltage	$I_E = 5\text{mA}$ , $I_C = 0$	4			V
$V_{(BR)CB0}$	Collector to base breakdown voltage	$I_C = 10\text{mA}$ , $I_E = 0$	35			V
$V_{(BR)CE0}$	Collector to emitter breakdown voltage	$I_C = 50\text{mA}$ , $R_{BE} = \infty$	17			V
$I_{CB0}$	Collector cutoff current	$V_{CB} = 25\text{V}$ , $I_E = 0$			1	mA
$I_{EB0}$	Emitter cutoff current	$V_{EB} = 3\text{V}$ , $I_C = 0$			1	mA
$h_{FE}$	DC forward current gain*	$V_{CE} = 10\text{V}$ , $I_C = 0.1\text{A}$	10	80	180	—
$P_O$	Output power	$V_{CC} = 12.5\text{V}$ , $P_{in} = 0.25\text{W}$ , $f = 175\text{MHz}$	5	6		W
$\eta_C$	Collector efficiency		60	70		%

Note. \* Pulse test,  $P_W = 150\mu\text{s}$ , duty = 5%.

Above parameters, ratings, limits and conditions are subject to change.

**TEST CIRCUIT**

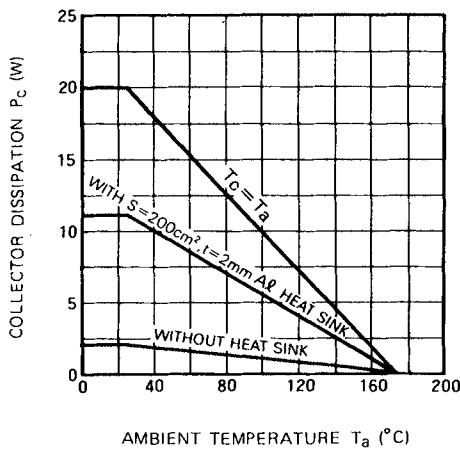


- C1: 100pF, 2200pF, 0.01μF in parallel
- C2: 100pF, 2200pF, 0.01μF, 10μF in parallel
- F.B.: Ferrite Bead

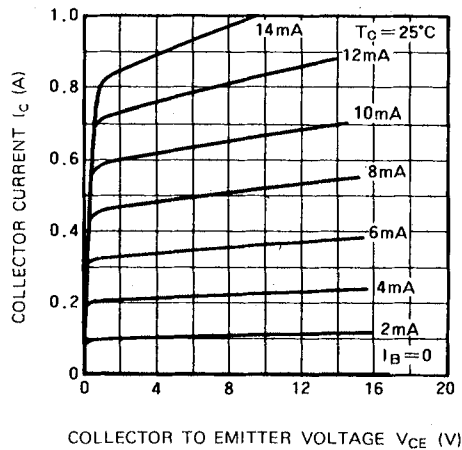
Notes: All coils are made from 1.5mmφ silver plated copper wire  
 D: Inner diameter of coil  
 T: Turn number of coil  
 P: Pitch of coil  
 Dimension in milli-meter

**TYPICAL PERFORMANCE DATA**

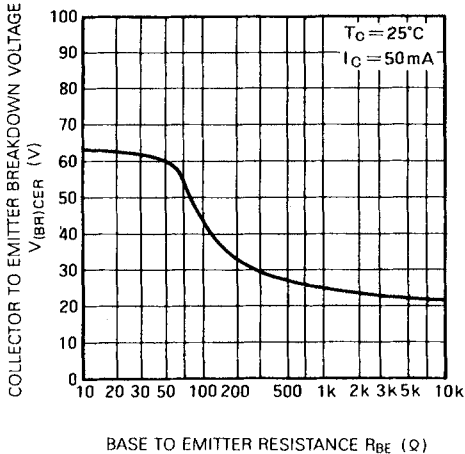
**COLLECTOR DISSIPATION VS. AMBIENT TEMPERATURE**



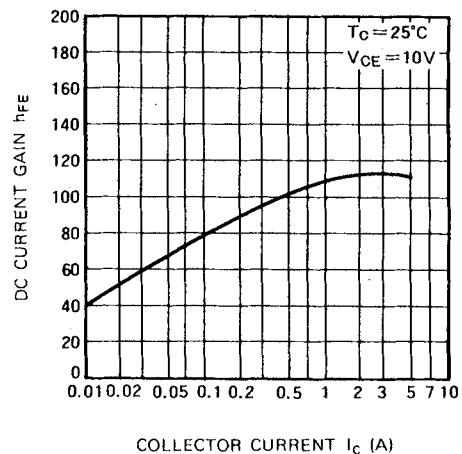
**COLLECTOR CURRENT VS. COLLECTOR TO EMITTER VOLTAGE**



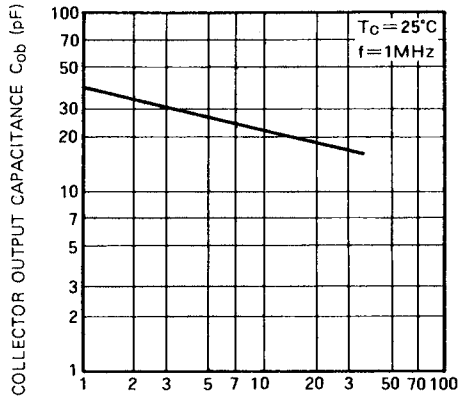
**COLLECTOR TO EMITTER BREAKDOWN VOLTAGE VS. BASE TO EMITTER RESISTANCE**



**DC CURRENT GAIN VS. COLLECTOR CURRENT**

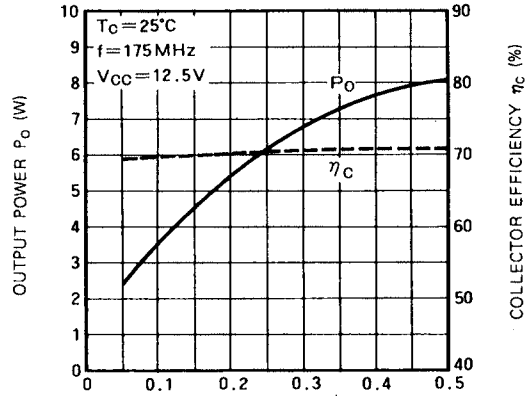


**COLLECTOR OUTPUT CAPACITANCE VS. COLLECTOR TO BASE VOLTAGE**



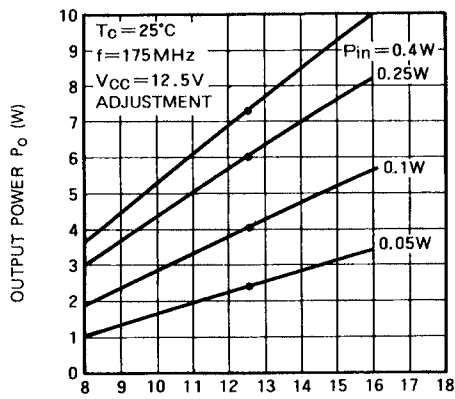
COLLECTOR TO BASE VOLTAGE  $V_{CB}$  (V)

**OUTPUT POWER, COLLECTOR EFFICIENCY VS. INPUT POWER**



INPUT POWER  $P_{in}$  (W)

**OUTPUT POWER VS. COLLECTOR SUPPLY VOLTAGE**



OUTPUT POWER  $P_o$  (W)