

SPECIFICATIONS

Mechanical

Contact Retention Force: 1.36kg min.

Electrical

Current Rating: 3A Per Pin Min.

Dielectric Withstanding Voltage: 500V RMS

Insulation Resistance: 1000MW min.

Physical

Housing: High Temperature, UL 94V-0 Color Black

Contact: Copper Alloy

Plating: See "ORDERING INFORMATION"

Operating Temperature: -10 to +85

Shrouded Connector

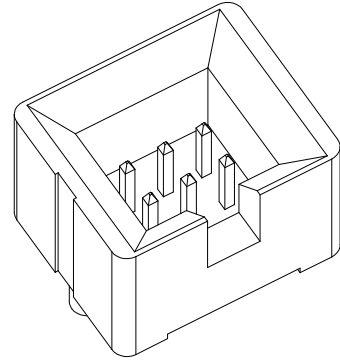
HL44 Series

Vertical, T/H Type

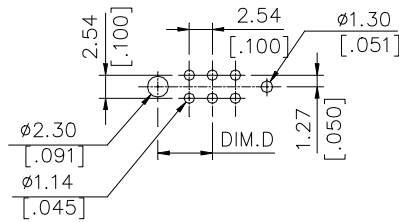
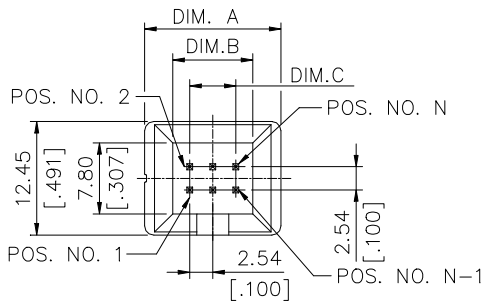
Receptacle

2.54mmX2.54mm

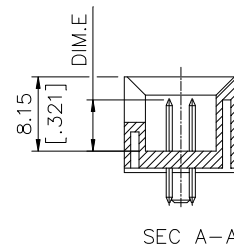
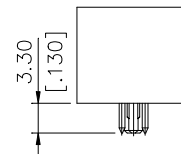
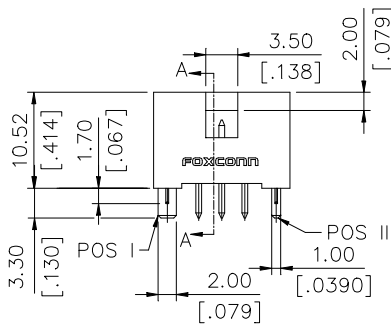
[.100]X[.100] Pitch



DRAWING



RECOMMENDED PCB FOOTPRINT



ORDERING INFORMATION

PRODUCT NO.: H L 4 4 * * * - * * * *

- Header
- Shrouded Header
- Termination&Contact Type
- No. Of Pos
- 02=02Pos
-
- 10=10Pos
- Contact Area Plating
- 0=150u" Min. Tin/ Lead
- F=Gold Flish With Lead Free RoHS COMPLIANCE
- v=15u" Min Gold With Lead Free RoHS COMPLIANCE
- E=Tin Plated With Lead Free RoHS COMPLIANCE
- H=30 u" Min Gold With Lead Free RoHS COMPLIANCE

- None : Standrad Type
- L: Extended Height Type DIM.F=19.91
- E: Extended Height Type DIM.F=25.91mm
- M: Extended Height Type DIM.F=19.9mm
- H:Extended Height Type DIM.F=27.25mm
- None : Withpost I And Post II
- S : Withpost I And Without Post II
- None DIM.E (For All Pins)=5.1 mm
- G1 : DIM. E(Only For 4th Pin0)=5.60mm
- DIM.E(For Remaining PIN)=5.10mm
- G3 : DIM. E(Only For 1st & 2nd Pin)=5.60mm
- DIM.E(For Remaining PIN)=5.10mm
- G4 : DIM. E(Only For 4th,9th,14th,19th Pin)=5.60mm
- DIM.E(For Remaining PIN)=5.10mm

HL4410*-****	10	32.80 [1.292]	26.58 [1.047]	22.86 [.901]	14.89 [.587]
HL4405*-****	05	19.10 [.753]	13.88 [.547]	10.16 [.400]	8.54 [.336]
HL4404*-****	04	17.50 [.690]	11.34 [.447]	7.62 [.300]	7.27 [.286]
HL4403*-****	03	15.00 [.591]	8.80 [.347]	5.08 [.200]	6.00 [.236]
HL4402*-****	02	12.46 [.491]	6.26 [.247]	2.54 [.100]	4.73 [.186]
P/N	POS.	DIM. A	DIM. B	DIM. C	DIM. D