

SPECIFICATIONS

D-SUB Connector

Mechanical

Contact Retention Force: 1.36kg (3.00Lb) min.
Contact Engagement Force: 0.34kg (0.75Lb) max.
Contact Separation Force: 0.021kg (0.05Lb) min.
Durability: 500 Cycles

DZ Series

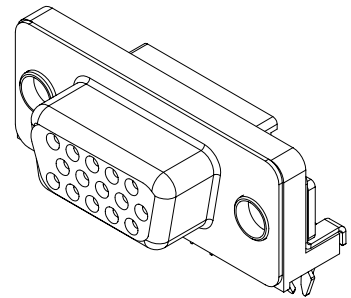
Right Angle, T/H Type
2.29mm [.090"] Pitch
15 Pos.

Electrical

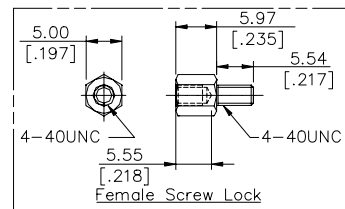
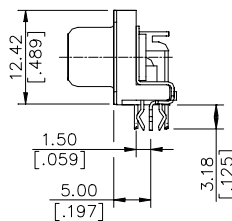
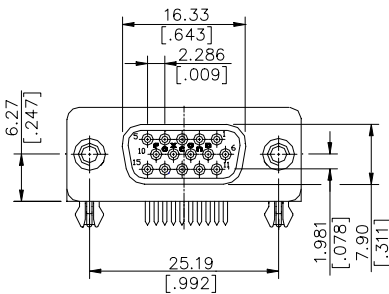
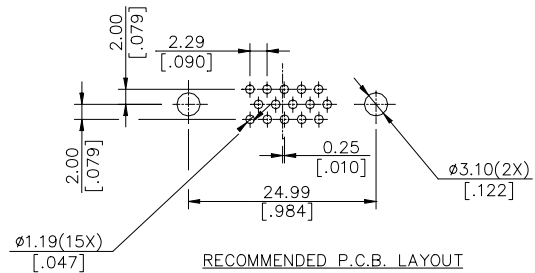
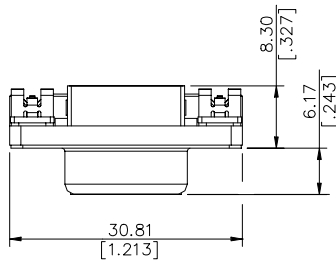
Current Rating: 2A
Contact Resistance: 15mΩ max.
Dielectric Withstanding Voltage: 1000V AC/1min min.
Insulation Resistance: 5000MΩ min.

Physical

Housing: Thermoplastic, UL 94V-0 rated in Blue 661C Color
Contact: Copper alloy
Plating: See "ORDERING INFORMATION"
Operating Temperature: -20°C to +85°C
Recommended Thickness of PCB: 1.57[.062]



DRAWING



ORDERING INFORMATION

PRODUCT NO.: DZ 1 1 A A * - P**

VGA Series _____
 Body Type _____
 1=Right Angle PCB Mount _____
 Termination Type _____
 1=Female _____
 NO. of Pos. _____
 A=H/D 15 Pos. _____
 Body Length _____
 A=5.00 _____

Extension Code _____
 Contact Area Plating _____
 1=Gold Flash _____
 2=20u" Gold _____
 3=30u" Gold _____
 6=10u" Gold _____
 7=15u" Gold _____
 F=Gold Flash(Lead Free) _____

DZ11AA*-P34	WITH FEMALE SCREW LOCK
DZ11AA*-P33	WITHOUT FEMALE SCREW LOCK
P/N	CHARACTER