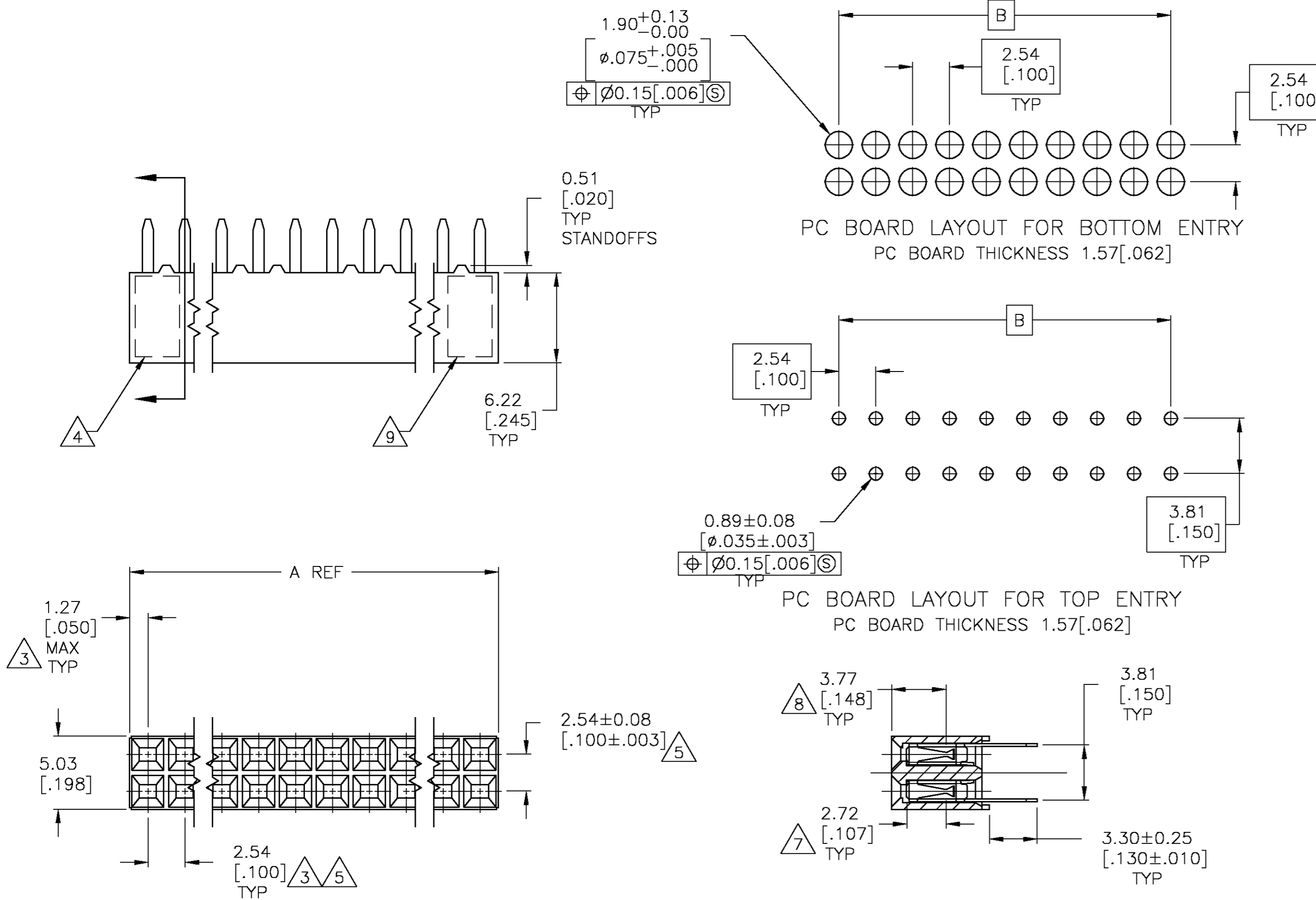


THIS DRAWING IS UNPUBLISHED. RELEASED FOR PUBLICATION  
 © COPYRIGHT BY TYCO ELECTRONICS CORPORATION. ALL RIGHTS RESERVED.

LOC		DIST		REVISIONS			
P	LTR	DESCRIPTION		DATE	DWN	APVD	
E		REV PER 063C 0657 04		09DEC04	BSV	JO	



2	99.06[3.900]	101.60[4.000]	80	4-147096-0
2	96.52[3.800]	99.06[3.900]	78	3-147096-9
2	93.98[3.700]	96.52[3.800]	76	3-147096-8
2	91.44[3.600]	93.98[3.700]	74	3-147096-7
2	88.90[3.500]	91.44[3.600]	72	3-147096-6
2	86.36[3.400]	88.90[3.500]	70	3-147096-5
2	83.82[3.300]	86.36[3.400]	68	3-147096-4
2	81.28[3.200]	83.82[3.300]	66	3-147096-3
2	78.74[3.100]	81.28[3.200]	64	3-147096-2
2	76.20[3.000]	78.74[3.100]	62	3-147096-1
2	73.66[2.900]	76.20[3.000]	60	3-147096-0
2	71.12[2.800]	73.66[2.900]	58	2-147096-9
2	68.58[2.700]	71.12[2.800]	56	2-147096-8
2	66.04[2.600]	68.58[2.700]	54	2-147096-7
2	63.50[2.500]	66.04[2.600]	52	2-147096-6
2	60.96[2.400]	63.50[2.500]	50	2-147096-5
2	58.42[2.300]	60.96[2.400]	48	2-147096-4
2	55.88[2.200]	58.42[2.300]	46	2-147096-3
2	53.34[2.100]	55.88[2.200]	44	2-147096-2
2	50.80[2.000]	53.34[2.100]	42	2-147096-1
2	48.26[1.900]	50.80[2.000]	40	2-147096-0
2	45.72[1.800]	48.26[1.900]	38	1-147096-9
2	43.18[1.700]	45.72[1.800]	36	1-147096-8
2	40.64[1.600]	43.18[1.700]	34	1-147096-7
2	38.10[1.500]	40.64[1.600]	32	1-147096-6
2	35.56[1.400]	38.10[1.500]	30	1-147096-5
2	33.02[1.300]	35.56[1.400]	28	1-147096-4
2	30.48[1.200]	33.02[1.300]	26	1-147096-3
2	27.94[1.100]	30.48[1.200]	24	1-147096-2
2	25.40[1.000]	27.94[1.100]	22	1-147096-1
2	22.86[.900]	25.40[1.000]	20	1-147096-0
2	20.32[.800]	22.86[.900]	18	147096-9
2	17.78[.700]	20.32[.800]	16	147096-8
2	15.24[.600]	17.78[.700]	14	147096-7
2	12.70[.500]	15.24[.600]	12	147096-6
2	10.16[.400]	12.70[.500]	10	147096-5
2	7.62[.300]	10.16[.400]	8	147096-4
2	5.08[.200]	7.62[.300]	6	147096-3
2	2.54[.100]	5.08[.200]	4	147096-2
2	-	2.54[.100]	2	147096-1


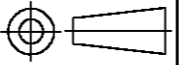

- 1 HOUSING: FLAME RETARDANT, GLASS FILLED, POLYESTER, COLOR: BLACK. CONTACT: PHOSPHOR BRONZE
- 2 CONTACT: 3.81-7.62 MICROMETERS[.000150-.000300] BRIGHT TIN-LEAD OVER 1.27µm[.000050] MINIMUM NICKEL
- 3 THESE DIMENSIONS PERTAIN TO CAVITY CENTERLINES ONLY - NOT TO CONTACT LOCATIONS
- 4 PART NUMBER AND DATE CODE ARE MARKED IN APPROXIMATE LOCATION SHOWN.
- 5 TOLERANCE IS NON-CUMULATIVE.
- 6 2 POSITION DATE CODE IS MARKED OPPOSITE SIDE OF TYCO LOGO.
- 7 POINT-OF-MEASUREMENT DIMENSION FOR PLATING THICKNESS (INSIDE CONTACT BEAM).
- 8 POINT-OF-CONTACT DIMENSION.
- 9 TYCO TRADEMARK AND CSA LOGO ARE MOLDED INTO HOUSING, THIS LOCATION.
- 10 NO PART NUMBER MARKING REQUIRED FOR THIS PART.
- 11 CONTACT: 3.81-7.62 MICROMETERS (.000150-.000300) MATTE TIN OVER 1.27 MICROMETERS (.000050) MINIMUM NICKEL
- 12 ROHS 2002 /95/EC COMPLIANT

THIS DRAWING IS A CONTROLLED DOCUMENT.		DWN M.BINNER 06NOV2002	Tyco Electronics Corporation Harrisburg, Pa 17105-3608	
DIMENSIONS: mm [INCHES]		CHK J.OLSON 06NOV02	NAME	
TOLERANCES UNLESS OTHERWISE SPECIFIED:		APVD J.OLSON 06NOV02	RECEPTACLE ASSEMBLY, MOD IV, DOUBLE ROW, DUAL ENTRY, .100X.100CL, VERTICAL MOUNT, AMPMODU	
0 PLC ± -		PRODUCT SPEC	SIZE	CAGE CODE
1 PLC ± -		APPLICATION SPEC	A2	00779
2 PLC ± 0.13[.005]		WEIGHT	DRAWING NO C=147096	
3 PLC ± -		RESTRICTED TO	-	
4 PLC ± -		CUSTOMER DRAWING	SCALE 4:1 SHEET 1 OF 2 REV E	
ANGLES ± -				
FINISH				

THIS DRAWING IS UNPUBLISHED. RELEASED FOR PUBLICATION  
 © COPYRIGHT BY TYCO ELECTRONICS CORPORATION. ALL RIGHTS RESERVED.

LOC	DIST	REVISIONS			
P	LTR	DESCRIPTION	DATE	DWN	APVD
AD	00	SEE SHEET 1	-	-	-

FINISH	B	A	POSN	PART NUMBER
△11	99.06	[3.900]	101.60	[4.000] 80 △12 9-147096-0
△11	96.52	[3.800]	99.06	[3.900] 78 △12 8-147096-9
△11	93.98	[3.700]	96.52	[3.800] 76 △12 8-147096-8
△11	91.44	[3.600]	93.98	[3.700] 74 △12 8-147096-7
△11	88.90	[3.500]	91.44	[3.600] 72 △12 8-147096-6
△11	86.36	[3.400]	88.90	[3.500] 70 △12 8-147096-5
△11	83.82	[3.300]	86.36	[3.400] 68 △12 8-147096-4
△11	81.28	[3.200]	83.82	[3.300] 66 △12 8-147096-3
△11	78.74	[3.100]	81.28	[3.200] 64 △12 8-147096-2
△11	76.20	[3.000]	78.74	[3.100] 62 △12 8-147096-1
△11	73.66	[2.900]	76.20	[3.000] 60 △12 8-147096-0
△11	71.12	[2.800]	73.66	[2.900] 58 △12 7-147096-9
△11	68.58	[2.700]	71.12	[2.800] 56 △12 7-147096-8
△11	66.04	[2.600]	68.58	[2.700] 54 △12 7-147096-7
△11	63.50	[2.500]	66.04	[2.600] 52 △12 7-147096-6
△11	60.96	[2.400]	63.50	[2.500] 50 △12 7-147096-5
△11	58.42	[2.300]	60.96	[2.400] 48 △12 7-147096-4
△11	55.88	[2.200]	58.42	[2.300] 46 △12 7-147096-3
△11	53.34	[2.100]	55.88	[2.200] 44 △12 7-147096-2
△11	50.80	[2.000]	53.34	[2.100] 42 △12 7-147096-1
△11	48.26	[1.900]	50.80	[2.000] 40 △12 7-147096-0
△11	45.72	[1.800]	48.26	[1.900] 38 △12 6-147096-9
△11	43.18	[1.700]	45.72	[1.800] 36 △12 6-147096-8
△11	40.64	[1.600]	43.18	[1.700] 34 △12 6-147096-7
△11	38.10	[1.500]	40.64	[1.600] 32 △12 6-147096-6
△11	35.56	[1.400]	38.10	[1.500] 30 △12 6-147096-5
△11	33.02	[1.300]	35.56	[1.400] 28 △12 6-147096-4
△11	30.48	[1.200]	33.02	[1.300] 26 △12 6-147096-3
△11	27.94	[1.100]	30.48	[1.200] 24 △12 6-147096-2
△11	25.40	[1.000]	27.94	[1.100] 22 △12 6-147096-1
△11	22.86	[.900]	25.40	[1.000] 20 △12 6-147096-0
△11	20.32	[.800]	22.86	[.900] 18 △12 5-147096-9
△11	17.78	[.700]	20.32	[.800] 16 △12 5-147096-8
△11	15.24	[.600]	17.78	[.700] 14 △12 5-147096-7
△11	12.70	[.500]	15.24	[.600] 12 △12 5-147096-6
△10	10.16	[.400]	12.70	[.500] 10 △12 5-147096-5
△10	7.62	[.300]	10.16	[.400] 8 △12 5-147096-4
△10	5.08	[.200]	7.62	[.300] 6 △12 5-147096-3
△10	2.54	[.100]	5.08	[.200] 4 △12 5-147096-2
△10	-		2.54	[.100] 2 △12 5-147096-1

THIS DRAWING IS A CONTROLLED DOCUMENT.		DWN M.BINNER 06NOV2002	 Tyco Electronics Corporation Harrisburg, Pa 17105-3608	
DIMENSIONS: mm [INCHES]		CHK J.OLSON 06NOV02	NAME	
TOLERANCES UNLESS OTHERWISE SPECIFIED: 0 PLC ± - 1 PLC ± - 2 PLC ± 0.13[.005] 3 PLC ± - 4 PLC ± - ANGLES ± - FINISH		APVD J.OLSON 06NOV02	RECEPTACLE ASSEMBLY, MOD IV, DOUBLE ROW, DUAL ENTRY, .100X.100CL, VERTICAL MOUNT, AMPMODU	
		PRODUCT SPEC 108-25022	SIZE A2	RESTRICTED TO
MATERIAL		APPLICATION SPEC 114-25018	CAGE CODE 00779	DRAWING NO C=147096
		WEIGHT -	SCALE 1:1	SHEET 2 OF 2
CUSTOMER DRAWING			REV E	