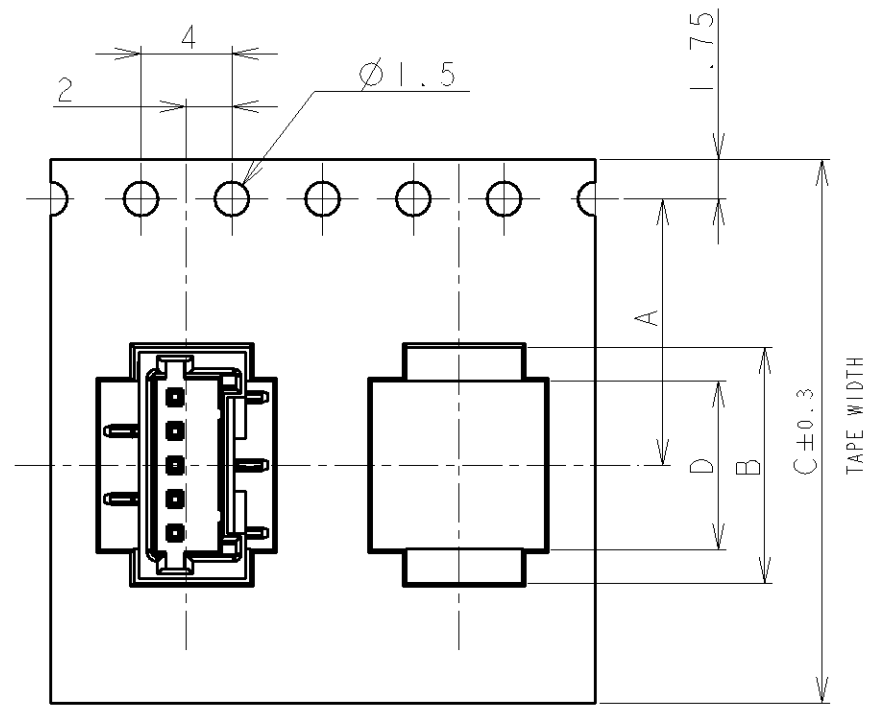
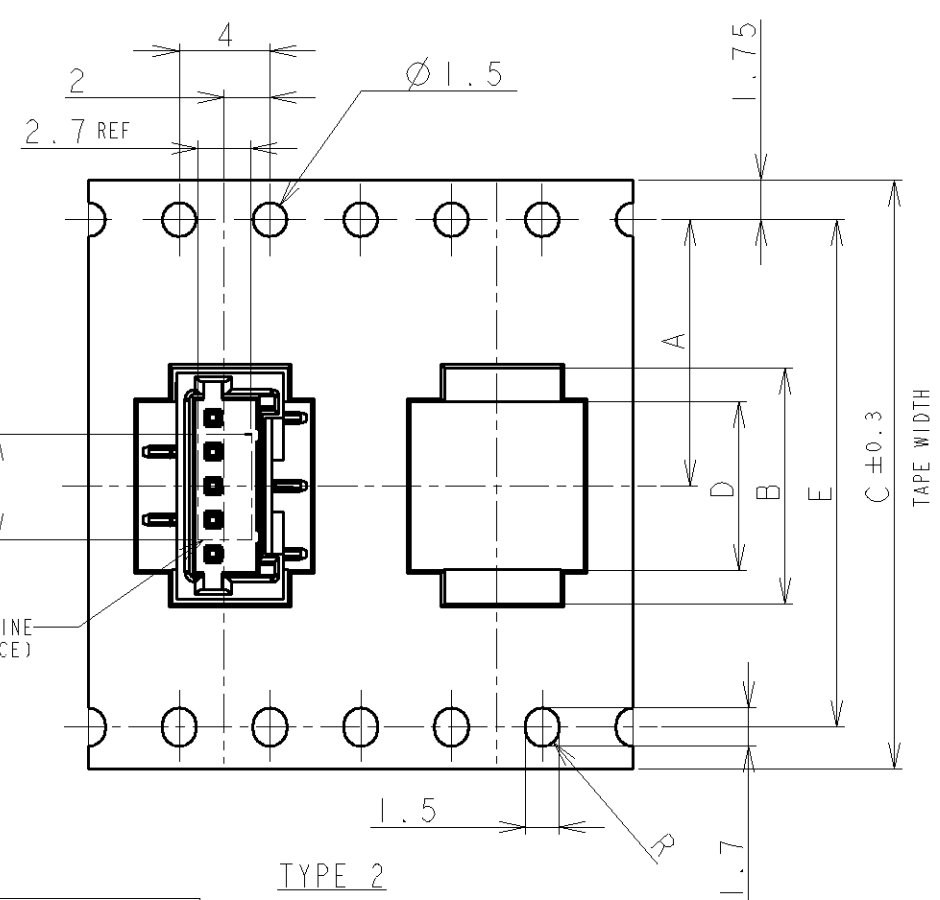


THIS DRAWING IS UNPUBLISHED. RELEASED FOR PUBLICATION .19
 © COPYRIGHT 19 BY AMP INCORPORATED. ALL RIGHTS RESERVED.

LOC	DIST	REVISIONS			
P	LTR	DESCRIPTION	DATE	DWN	APVD
DY	-	REVISED	FP00-0090-03	24APR03	LWY CWL



TYPE 1

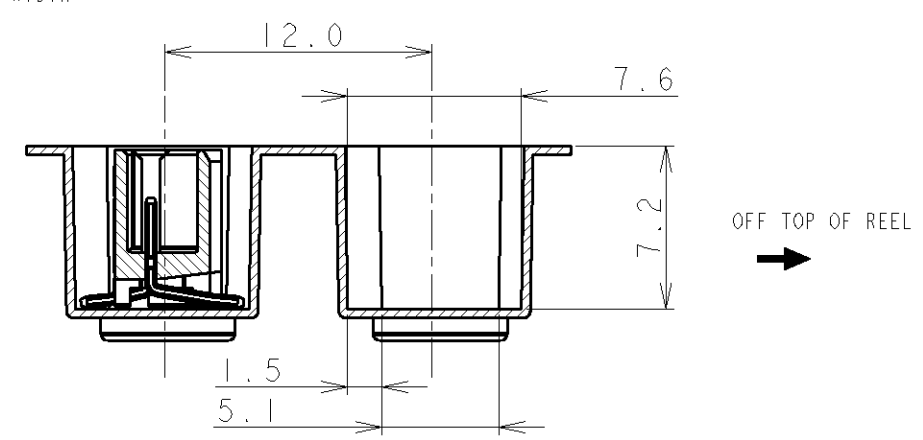
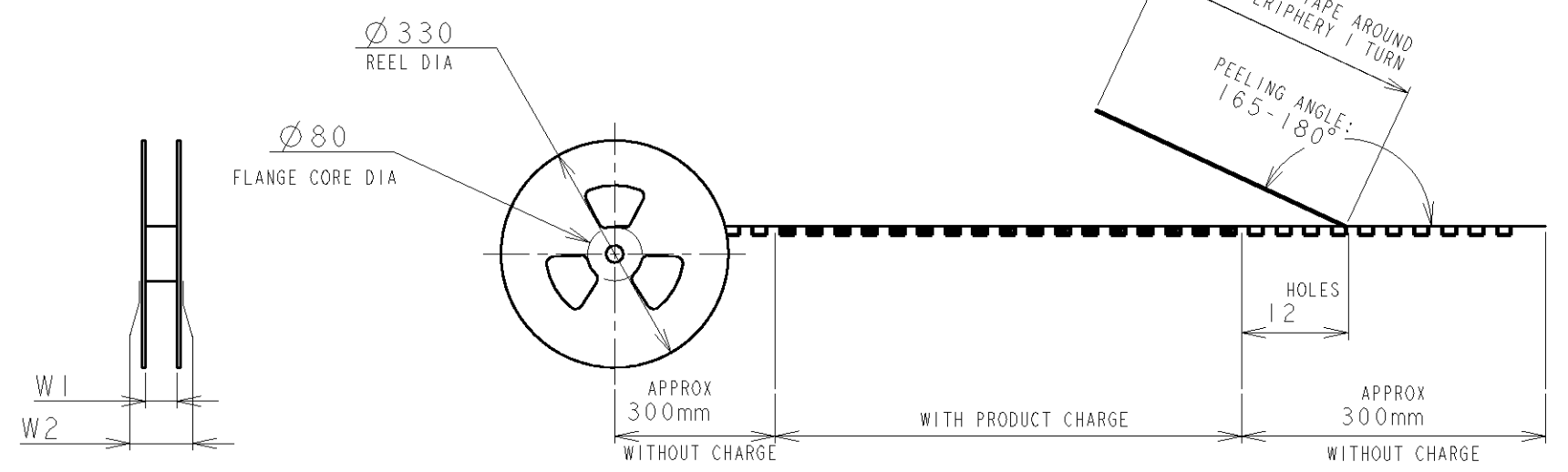
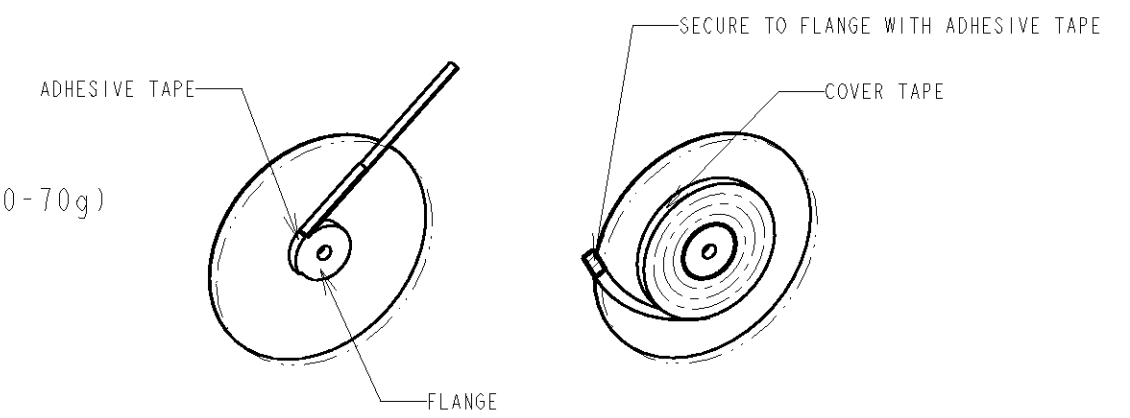


TYPE 2

TOLERANCES UNLESS OTHERWISE SPECIFIED:

10 >	: ±0.2
30 > * > 10	: ±0.25
100 > * > 30	: ±0.3
ANGLE	: ±3°

NOTE:
 1. PEELING STRENGTH: 0.20-0.69N (20-70g)
 PEELING ANGLE: 165-180°
 PEELING SPEED: 300mm/MINUTE.



THIS DRAWING IS A CONTROLLED DOCUMENT FOR AMP INCORPORATED. IT IS SUBJECT TO CHANGE AND THE CONTROLLING ENGINEERING ORGANIZATION SHOULD BE CONTACTED FOR THE LATEST REVISION.		DWN W.L. CHOO 8.AUG'97	AMP AMP MANUFACTURING (SINGAPORE) PTE. LTD.		
DIMENSIONS: mm		CHK J. TANIGAWA 8.AUG'97			
TOLERANCES UNLESS OTHERWISE SPECIFIED:		APVD W.L. CHOO	NAME AMP Mini Common Terminated (CT) Connector 1.5mm PITCH SINGLE ROW POST HDR ASS'Y (V) SMT TYPE WITH BOSS, EMBOSS TAPE PACKAGED		
0 PLC ± 1 PLC ± 2 PLC ± SEE L.H.S. 3 PLC ± 4 PLC ± ANGLES ±		PRODUCT SPEC 108-5525	SIZE A3	CAGE CODE 00779	DRAWING NO C-353521
MATERIAL		APPLICATION SPEC 114-5223	RESTRICTED TO		
FINISH		WEIGHT	SCALE NON		
		CUSTOMER DRAWING	SHEET 1 OF 2		
			REV F		

LOC	DIST	REVISIONS					
		P	LTR	DESCRIPTION	DATE	DWN	APVD
DY	-						

TYPE	W2	W1	F	E	D	C	B	A	QTY/ REEL	POS	COLOR	CONNECTOR P/N	ON TAPE P/N	
	DIMENSIONS													
TYPE 2	49.5	45.5	6.2	40.4	29.9	44	32.9	20.2±0.15	500	20	BLACK	7-353520-0	7-353521-0	
	49.5	45.5	4.7	40.4	28.4	44	31.4		500	19		6-353520-9	6-353521-9	
	49.5	45.5	6.2	40.4	26.9	44	29.9		500	18		6-353520-8	6-353521-8	
	49.5	45.5	4.7	40.4	25.4	44	28.4		500	17		6-353520-7	6-353521-7	
	49.5	45.5	6.2	40.4	23.9	44	26.9		500	16		6-353520-6	6-353521-6	
	49.5	45.5	4.7	40.4	22.4	44	25.4		500	15		6-353520-5	6-353521-5	
	49.5	45.5	6.2	40.4	20.9	44	23.9		500	14		6-353520-4	6-353521-4	
	49.5	45.5	4.7	40.4	19.4	44	22.4		500	13		6-353520-3	6-353521-3	
	37.5	33.5	6.2	28.4	17.9	32	20.9		14.2	500		12	6-353520-2	6-353521-2
	37.5	33.5	4.7	28.4	16.4	32	19.4		14.2	500		11	6-353520-1	6-353521-1
TYPE 1	37.5	33.5	6.2	28.4	14.9	32	17.9	14.2	500	10	6-353520-0	6-353521-0		
	37.5	33.5	4.7	28.4	13.4	32	16.4	14.2	500	9	5-353520-9	5-353521-9		
	29.5	25.5	6.2	-	11.9	24	14.9	11.5	500	8	5-353520-8	5-353521-8		
	29.5	25.5	4.7	-	10.4	24	13.4	11.5	500	7	5-353520-7	5-353521-7		
	29.5	25.5	6.2	-	8.9	24	11.9	11.5	500	6	5-353520-6	5-353521-6		
	29.5	25.5	4.7	-	7.4	24	10.4	11.5	500	5	5-353520-5	5-353521-5		
	21.5	17.5	6.2	-	5.9	16	8.8	7.5	500	4	5-353520-4	5-353521-4		
21.5	17.5	4.7	-	4.4	16	7.4	7.5	500	3	5-353520-3	5-353521-3			
21.5	17.5	2.8	-	2.9	16	5.9	7.5	500	2	-	-			

TYPE	W2	W1	F	E	D	C	B	A	QTY/ REEL	POS	COLOR	CONNECTOR P/N	ON TAPE P/N	
	DIMENSIONS													
TYPE 2	49.5	45.5	6.2	40.4	29.9	44	32.9	20.2±0.15	500	20	BEIGE	2-353520-0	2-353521-0	
	49.5	45.5	4.7	40.4	28.4	44	31.4		500	19		1-353520-9	1-353521-9	
	49.5	45.5	6.2	40.4	26.9	44	29.9		500	18		1-353520-8	1-353521-8	
	49.5	45.5	4.7	40.4	25.4	44	28.4		500	17		1-353520-7	1-353521-7	
	49.5	45.5	6.2	40.4	23.9	44	26.9		500	16		1-353520-6	1-353521-6	
	49.5	45.5	4.7	40.4	22.4	44	25.4		500	15		1-353520-5	1-353521-5	
	49.5	45.5	6.2	40.4	20.9	44	23.9		500	14		1-353520-4	1-353521-4	
	49.5	45.5	4.7	40.4	19.4	44	22.4		500	13		1-353520-3	1-353521-3	
	37.5	33.5	6.2	28.4	17.9	32	20.9		14.2	500		12	1-353520-2	1-353521-2
	37.5	33.5	4.7	28.4	16.4	32	19.4		14.2	500		11	1-353520-1	1-353521-1
TYPE 1	37.5	33.5	6.2	28.4	14.9	32	17.9	14.2	500	10	1-353520-0	1-353521-0		
	37.5	33.5	4.7	28.4	13.4	32	16.4	14.2	500	9	353520-9	353521-9		
	29.5	25.5	6.2	-	11.9	24	14.9	11.5	500	8	353520-8	353521-8		
	29.5	25.5	4.7	-	10.4	24	13.4	11.5	500	7	353520-7	353521-7		
	29.5	25.5	6.2	-	8.9	24	11.9	11.5	500	6	353520-6	353521-6		
	29.5	25.5	4.7	-	7.4	24	10.4	11.5	500	5	353520-5	353521-5		
	21.5	17.5	6.2	-	5.9	16	8.8	7.5	500	4	353520-4	353521-4		
21.5	17.5	4.7	-	4.4	16	7.4	7.5	500	3	353520-3	353521-3			
21.5	17.5	2.8	-	2.9	16	5.9	7.5	500	2	-	-			

RELEASED FOR PUBLICATION

THIS DRAWING IS UNPUBLISHED.

ALL RIGHTS RESERVED.
BY AMP INCORPORATED.

DIMENSIONS: mm

TOLERANCES UNLESS OTHERWISE SPECIFIED:

0 PLC ±
1 PLC ±
2 PLC ± SEE SHEET 1
3 PLC ±
4 PLC ±
ANGLES ±

DWN W. L. CHOO 8.AUG '97
CHK J. TANIGAWA 8.AUG '97
APVD WL CHOO
PRODUCT SPEC
SEE SHEET 1 OF 2
APPLICATION SPEC
SEE SHEET 1 OF 2
WEIGHT

MATERIAL FINISH

AMP AMP MANUFACTURING (SINGAPORE) PTE. LTD.

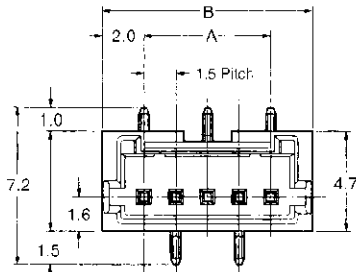
NAME AMP Mini Common Terminated (CT) Connector 1.5mm PITCH SINGLE ROW POST HDR ASS'Y (V) SMT TYPE WITH BOSS, EMBOSS TAPE PACKAGED

SIZE A4 CAGE CODE 00779 DRAWING NO C=353521 RESTRICTED TO -

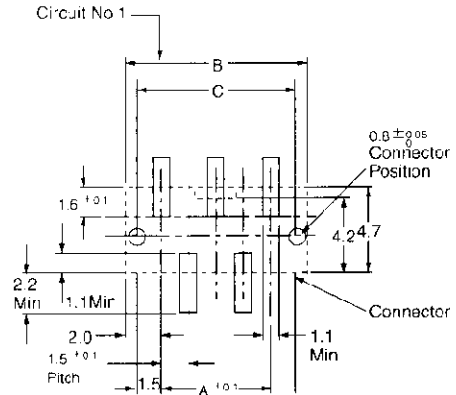
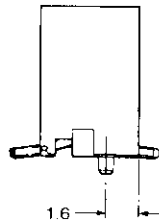
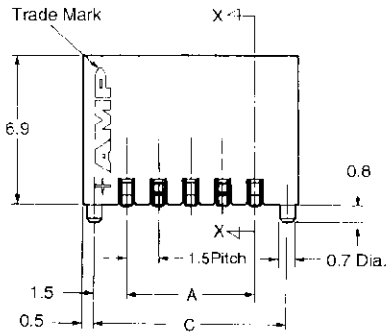
CUSTOMER DRAWING SCALE NON SHEET 2 OF 2 REV F

Wire to Board Connectors Mini CT (Common Termination) Connectors System Post Header Assemblies (Board-mount)

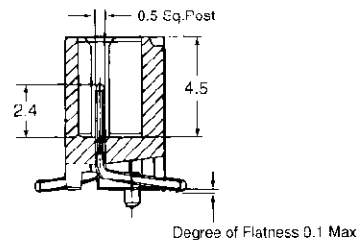
One-Row SMT Type /
Vertical-mount Type
(with bosses)



Circuit No.1



PC Board Layout (Component Side)
(Applicable board thickness—0.8mm Min.)

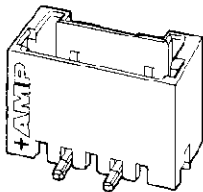


Section X-X

Material and Finish :

Housing—UL94V-0 rated,
glass fiber reinforced (heat-
resistant) Nylon, beige and
black

Post—1 in-lead plated,
brass wire



No. of Pos.	Dimensions			Part No. of Post Header Assemblies*	
	A	B	C	Beige (Natural color)	Black
2	1.5	5.5	4.5	—	—
3	3.0	7.0	6.0	353521-3	5-353521-3
4	4.5	8.5	7.5	353521-4	5-353521-4
5	6.0	10.0	9.0	353521-5	5-353521-5
6	7.5	11.5	10.5	353521-6	5-353521-6
7	9.0	13.0	12.0	353521-7	5-353521-7
8	10.5	14.5	13.5	353521-8	5-353521-8
9	12.0	16.0	15.0	353521-9	5-353521-9
10	13.5	17.5	16.5	1-353521-0	6-353521-0
11	15.0	19.0	18.0	1-353521-1	6-353521-1
12	16.5	20.5	19.5	1-353521-2	6-353521-2
13	18.0	22.0	21.0	1-353521-3	6-353521-3
14	19.5	23.5	22.5	1-353521-4	6-353521-4
15	21.0	25.0	24.0	1-353521-5	6-353521-5
16	22.5	26.5	25.5	1-353521-6	6-353521-6
17	24.0	28.0	27.0	1-353521-7	6-353521-7
18	25.5	29.5	28.5	1-353521-8	6-353521-8
19	27.0	31.0	30.0	1-353521-9	6-353521-9
20	28.0	32.5	31.5	2-353521-0	7-353521-0

* Emboss tape mounted, 500 pcs.

- [Home](#)
- [Part Number Search](#)
- [Document Search](#)
- [Text Search](#)
- [Alternate Part Search](#)
- [Multiple Part Comparison](#)
- [Alphabetical Search](#)
- [Brand Search](#)
- [Industry Product Search](#)
- [Product Type Search](#)
- [Product Family Search](#)
- [Competitor Cross Reference](#)
- [Lead Free Solutions](#)
- [Help/Glossary](#)

Current Brand View	View All Tyco Electronics Brands Click to activate links to all other products
AMP	

CT (Common Termination) Connector System

1.5mm Centerline AMP Mini CT

AMP **353521-4** **Active** [Active](#)

(Tyco Electronics P/N: 353521-4)

[Search for Parts](#) | [Previous](#) [1] [2](#) [3](#) [4](#) [Next](#)

Document links for this part cannot be displayed. Your browser does not support inline frames or is currently configured not to display inline frames. Inline frames are supported in both Internet Explorer 5 and Netscape 6, as well as all later versions of these browsers.

Related Part Information		
General Information	eCommerce	Related Part Information
General Info Sales Info Assembly Subcontractors	Pricing Product Availability	

Photos & Line Drawings - The photographs and/or line drawings are representative images of a product for viewing purposes only.

[Recommended PC Board Layout](#)

Searchable Features:	
Brand:	AMP
Product Type:	Post Header
No. of Positions:	4
Panel Attachment:	No
PCB Mount Angle:	Vertical
Terminate To:	Printed Circuit Board
PCB Mount Style:	Surface Mount
No. of Rows:	1
Color:	Beige
PCB Retention Feature:	Without
PCB Polarization:	With

Other Properties:	
Housing Material:	Glass Fiber Reinforced Nylon
Housing Flammability Rating:	UL 94V-0
Heat Resistant Material:	Yes
Contact Material:	Brass
Contact Mating Area Plating:	Tin-Lead
Contact Shape:	Square
Post Size (mm [in]):	0.50 [.020]
PCB Thickness (mm [in]):	0.80 [0.032]
Centerline (mm [in]):	1.50 [0.059]

Packaging Method:

Tape

PCB Polarization Method:

Mounting Boss

[Copyright](#) and [Privacy Statement](#)

Visit [Tyco International, Ltd.](#)

[Products](#) | [Catalog](#) | [Brands](#) | [Industries](#) | [Commerce](#) | [Supplier](#) | [Customer Service](#) | [About](#) | [Home](#)