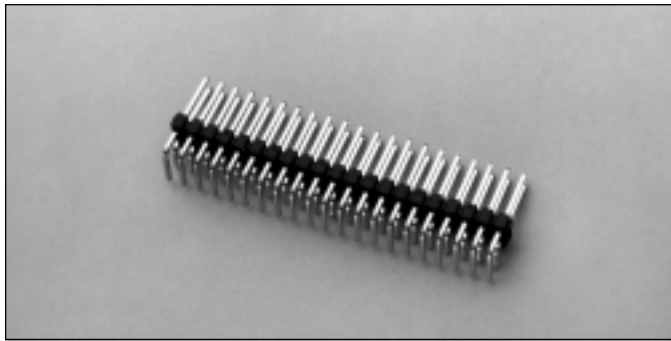


.100" (2.54mm) Dual Row, Through Hole, Right Angle Header with Retention Tails



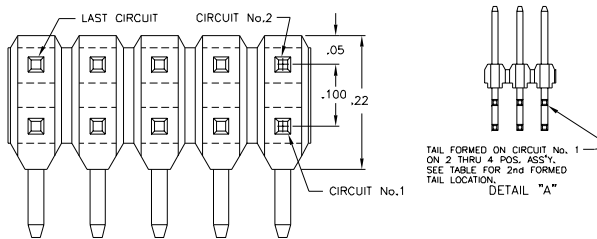
9100 SERIES ("POST/BOXE")

PART NUMBER LEGEND

91XX-33-2XX-XX

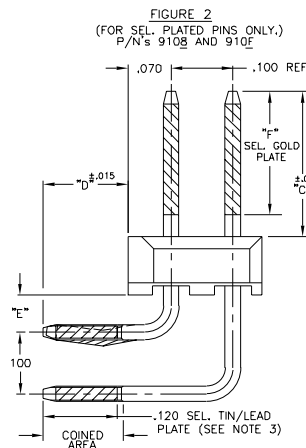
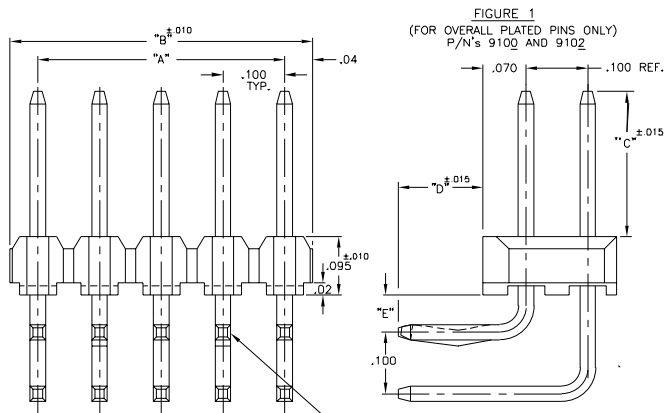
- PIN NUMBER**
(SEE TABLE 2)
- NUMBER OF POSITIONS PER ROW**
(SEE TABLE 1)
- PIN PLATING** (SEE NOTE 3)
- INSULATOR MATERIAL** (SEE NOTE 1)

MATING CONNECTORS: 9000 SERIES



NOTES:

1. INSULATOR MATERIAL : 910X - GLASS FILLED POLYESTER (PET); UL 94V-0; COLOR: BLACK
911X - GLASS FILLED POLYESTER (PCT); UL 94V-0; COLOR: BLACK
2. PIN MATERIAL : PHOSPHOR BRONZE
3. PIN FINISH :
910Q - BRITE TIN OVER NICKEL PLATE.
910J - .000015 GOLD OVER NICKEL PLATE.
910B - .000050/.000150 NICKEL PLATE ALL OVER; 000030 SEL. GOLD PLATE AS INDICATED; .0001-.0002 SEL. 90/10 TIN/LEAD ON SOLDER TAIL AS INDICATED.
910E - .000050/.000150 NICKEL PLATE ALL OVER; .000015 SEL. GOLD PLATE AS INDICATED; .0001-.0002 SEL. 90/10 TIN/LEAD ON SOLDER TAIL AS INDICATED.



PART No.	"C"	"D"	"E"	"F"
-01	.230	.110	.06	.200
-02	.320	.110	.06	.200
-03	225±.008, 085±.008		.035	.200
-04	342±.008	.102	.06	.200

TAIL FORMED ON CIRCUIT No. 3 (TYP. 5 THRU 40 POS. ASS'Y.) SEE TABLE FOR 2nd & 3rd FORMED TAIL LOCATIONS. SEE DETAIL "A" FOR FORMED TAIL LOCATIONS ON 2 THRU 4 POS. ASS'Y.

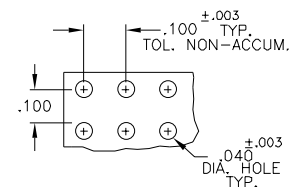


TABLE 1

PART NUMBER	NO. OF CIRCUITS	DIM. A	DIM. B	2nd FORMED TAIL LOCATION CIRCUIT No.	3rd FORMED TAIL LOCATION CIRCUIT No.
910X-33-202-XX	4	1.100	1.190	3	1
-203	6	2.008	2.910	9	1
-204	8	3.008	3.910	7	1
-205	10	4.008	4.910	7	1
-206	12	5.008	5.910	9	1
-207	14	6.008	6.910	11	1
-208	16	7.008	7.910	13	1
-209	18	8.008	8.910	15	1
-210	20	9.008	9.910	17	1
-211	22	1.000	1.090	19	1
-212	24	1.100	1.190	21	1
-213	26	1.200	1.290	23	1
-214	28	1.300	1.390	25	1
-215	30	1.400	1.490	27	1
-216	32	1.500	1.590	29	1
-217	34	1.600	1.690	31	1
-218	36	1.700	1.790	33	1
-219	38	1.800	1.890	35	1
-220	40	1.900	1.990	37	1
-221	42	2.000	2.090	39	21
-222	44	2.100	2.190	41	21
-223	46	2.200	2.290	43	23
-224	48	2.300	2.390	45	23
-225	50	2.400	2.490	47	25
-226	52	2.500	2.590	49	25
-227	54	2.600	2.690	51	27
-228	56	2.700	2.790	53	27
-229	58	2.800	2.890	55	29
-230	60	2.900	2.990	57	29
-231	62	3.000	3.090	59	31
-232	64	3.100	3.190	61	31
-233	66	3.200	3.290	63	33
-234	68	3.300	3.390	65	33
-235	70	3.400	3.490	67	35
-236	72	3.500	3.590	69	35
-237	74	3.600	3.690	71	37
-238	76	3.700	3.790	73	37
-239	78	3.800	3.890	75	39
910X-33-240-XX	80	3.900	3.990	77	39