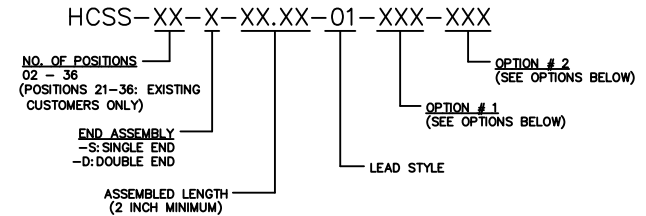
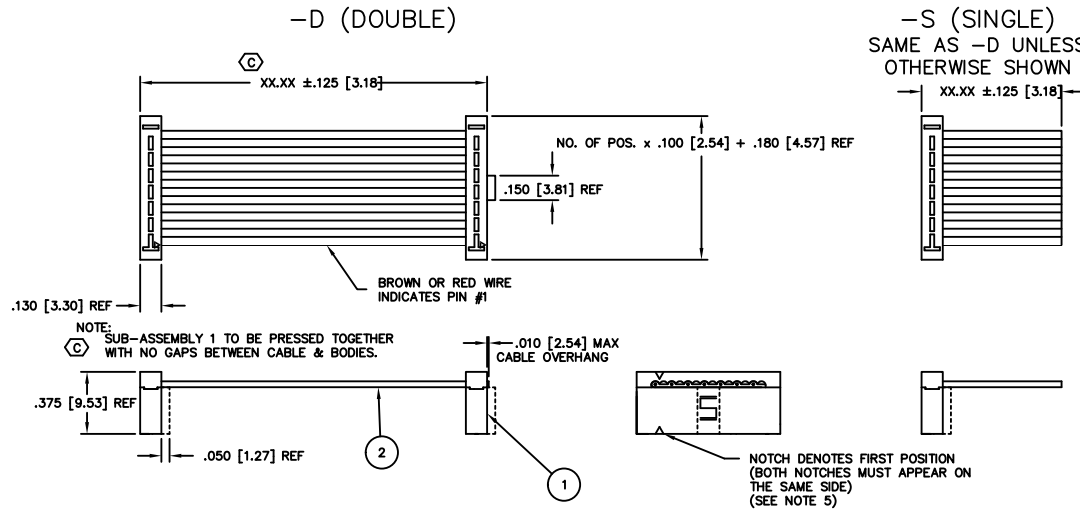


REVISION T

DO NOT SCALE FROM THIS PRINT

DIMENSIONS ARE IN INCHES		TOLERANCES ARE:		TITLE:	DWG NO.:
ONE PLACE DECIMALS ±.1	THREE PLACE DECIMALS ±.005	ANGLES ±1°	ASSEMBLY	.100 C.L. MOLD TO POS. SINGLE ROW, FEMALE ASSEMBLY	HCSS-XX-X-XX.XX-01-XXX-XXX
TWO PLACE DECIMALS ±.01	FOUR PLACE DECIMALS ±.0020				HCSS-XX-X-XX.XX-01-XXX-XXX

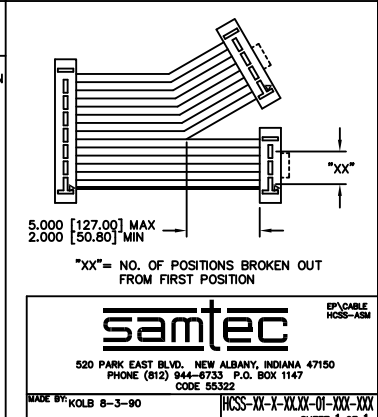
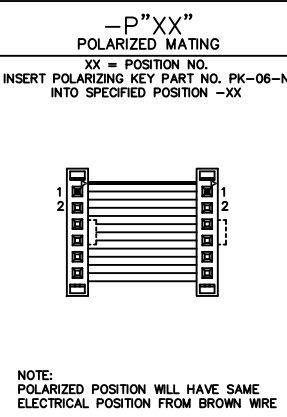
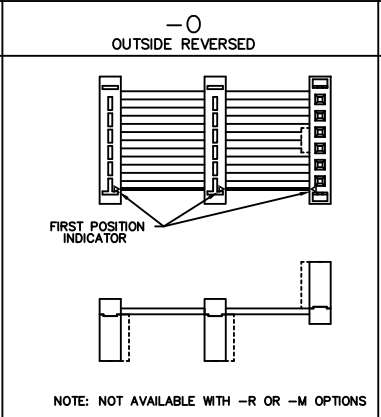
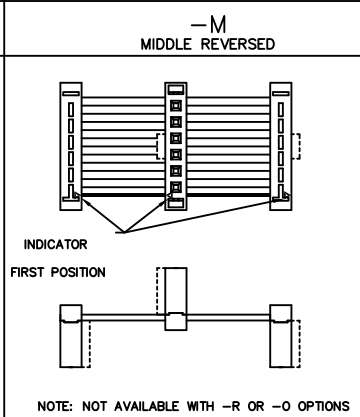
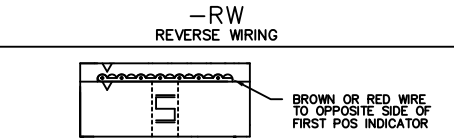
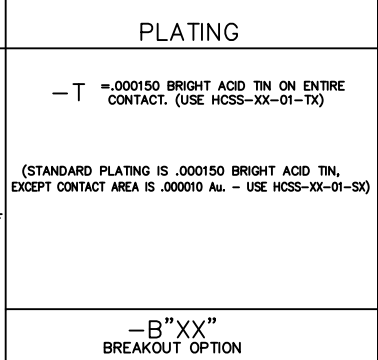
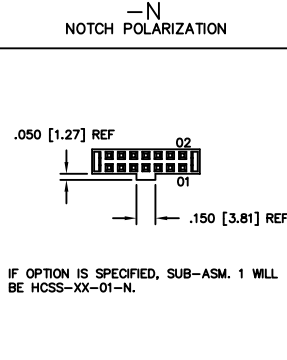
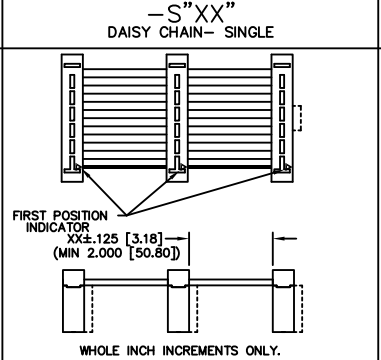
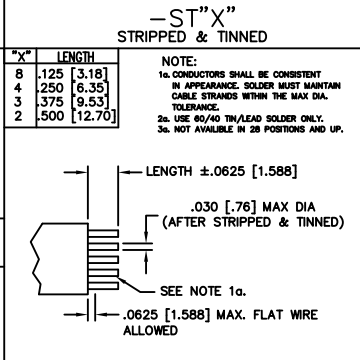
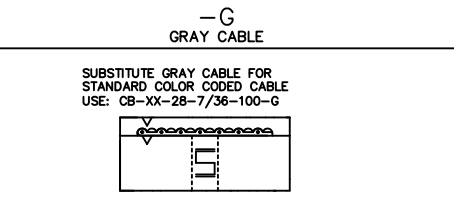
SHEET 1 OF 1



- NOTES:
- HIDDEN LINES ARE USED TO SHOW POLARIZATION WHEN USING -N OPTION.
 - (C) REPRESENTS CRITICAL DIMENSIONS FOR STATISTICAL PROCESS CONTROL.
 - ALL ASSEMBLIES TO BE 100% ELECTRICALLY TESTED FOR SHORTS AND OPENS.
 - ALL ASSEMBLIES TO BE 100% HI-POT TESTED AT 1000V.
 - FOR -R OR -RW OPTION, CABLE RIB ORIENTATION CAN BE EITHER TOWARDS OR AWAY FROM THE CAP.
 - WHEN CUTTING CABLE TO LENGTH, CONDUCTORS SHOULD NOT EXTEND PAST THE CABLE INSULATION, EXTENDING LESS THAN 25% OF CABLE THICKNESS ON CONSECUTIVE AND LESS THAN 50% OF CABLE THICKNESS ON NON-CONSECUTIVE STRANDS IS CONSIDERED A PROCESS INDICATOR.
 - FOR CONNECTOR ASSEMBLY SEE HCSS-XX-XX-XXX.

1	2
HCSS-XX-01-X	CB-XX-28-7/36-100-C

SPECIFY NO. OF POS. IN PART CALLOUT -XX



PROPRIETARY NOTE

samtec EP/CABLE HCSS-ASM

520 PARK EAST BLVD. NEW ALBANY, INDIANA 47150
PHONE (812) 944-8733 P.O. BOX 1147
CODE 55322

MADE BY: KOLB 8-3-90

HCSS-XX-X-XX.XX-01-XXX-XXX
SHEET 1 OF 1