

Tous droits strictement réservés. Reproduction ou communication à des tiers interdite sous quelque forme que ce soit sans autorisation écrite du propriétaire. Propriété de c FCI. Droits de reproduction FCI.



All rights strictly reserved. Reproduction or issue to third parties in any form whatever is not permitted without written authority from the proprietor. Property of FCI. Copyright FCI.

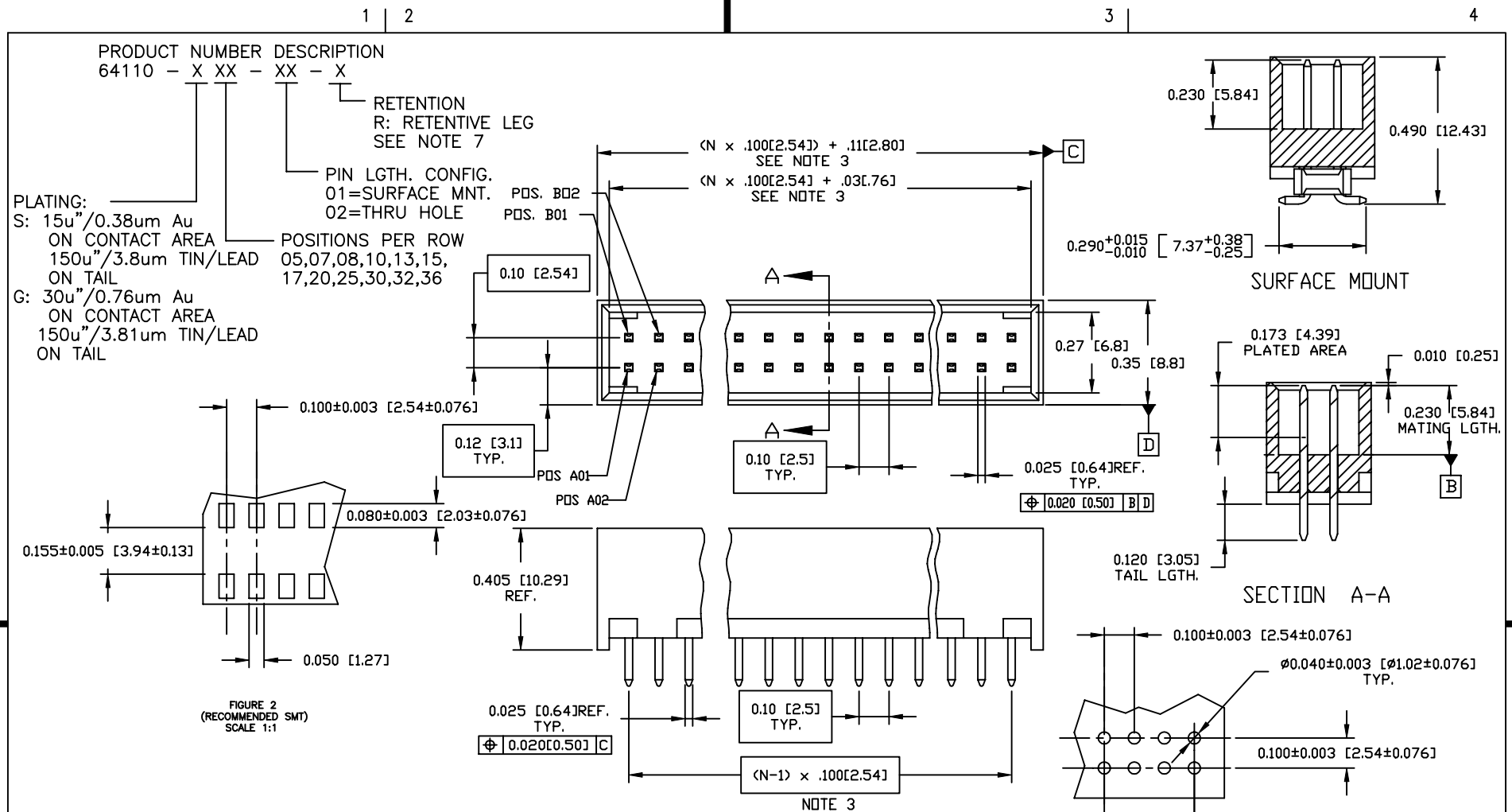


FIGURE 2 (RECOMMENDED SMT) SCALE 1:1

FIGURE 1 (RECOMMENDED THRU HOLE) SCALE: 1:1

- NOTES:
1. MATERIAL HOUSING: HIGH TEMP. THERMOPLASTIC UL 94V-0, COLOR: BLACK
 2. PIN MATERIAL: PHOS BRONZE
 3. TO DETERMINE DIMENSIONS:
N=NUMBER OF POSITIONS PER ROW
EX. 10 POS., $N \times .100/2.54 = 1.00/25.4$
 4. 0.9Kg MIN. PIN RETENTION IN EITHER DIRECTION
 5. PACKAGE IN TRAYS.
 6. RETENTION LEG:
5lbs/2.3Kgs MAX. INSERTION FORCE & .25lbs/1Kg MIN. RETENTION FORCE PER RETENTIVE PIN USING .062/1.57 THICK PCB AND RECOMMENDED HOLE PATTERN. RETENTIVE LOCATION AT THE DISCRETION OF THE MANUF. RETENTION IS TWO PINS PER PART ADJACENT TO ONE ANOTHER.
 7. OMIT FROM PRODUCT NUMBER IF THIS FEATURE IS NOT APPLICABLE.
 8. UNDERPLATING: 50u"/1.27um Ni.

mat'l. code				tolerances unless otherwise specified		CUSTOMER COPY	FCI Electronics	
SEE NOTES							www.fciconnect.com	
ltr	ecn no	dr	date	.XX ±.01/.3		projection	title .100/2.54 SHROUDED HDR. BOARD TO BOARD	
A	V92814	TAB	08/24/99	linear	.XXX ±.005/0.13			
B	V10891	GIP	01/25/02	.XXX ±.0020/0.051		INCH/MM	product family HEADER	
				angles	0° ±2°			
				dr	T.BRUNGARD 07/14/99	scale 1:1	size A 64110	
				enr	H.SUNDY 07/14/99			
				chr	H.SUNDY 07/14/99			
				appd	H.SUNDY 07/14/99			
sheet index	revision sheet	B	1					code 213
								sheet 1 of 1