

54AC/74AC241 • 54ACT/74ACT241

Octal Buffer/Line Driver With 3-State Outputs

Description

The 'AC/ACT241 is an octal buffer and line driver designed to be employed as a memory address driver, clock driver and bus-oriented transmitter or receiver which provides improved PC board density.

- 3-State Outputs Drive Bus Lines or Buffer Memory Address Registers
- Outputs Source/Sink 24 mA
- 'ACT241 has TTL-Compatible Inputs

Ordering Code: See Section 6

Truth Tables

Inputs		Outputs (Pins 12, 14, 16, 18)
OE ₁	D	
L	L	L
L	H	H
H	X	Z

Inputs		Outputs (Pins 3, 5, 7, 9)
OE ₂	D	
H	L	L
H	H	H
L	X	Z

H = HIGH Voltage Level

L = LOW Voltage Level

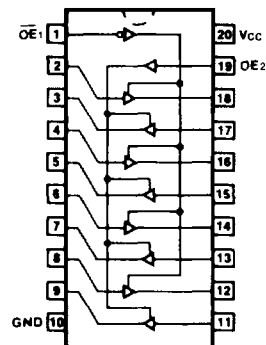
X = Immaterial

Z = High Impedance

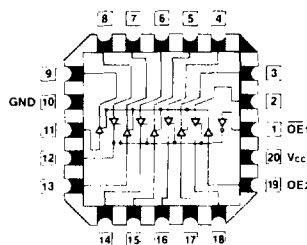
DC Characteristics (unless otherwise specified)

Symbol	Parameter	54AC/ACT	74AC/ACT	Units	Conditions
I _{CC}	Maximum Quiescent Supply Current	160	80	μA	V _{IN} = V _{CC} or Ground, V _{CC} = 5.5 V, T _A = Worst Case
I _{CC}	Maximum Quiescent Supply Current	8.0	8.0	μA	V _{IN} = V _{CC} or Ground, V _{CC} = 5.5 V, T _A = 25°C
I _{CC(T)}	Maximum Additional I _{CC} /Input ('ACT241)	1.6	1.5	mA	V _{IN} = V _{CC} - 2.1 V, V _{CC} = 5.5 V, T _A = Worst Case

Connection Diagrams



Pin Assignment for DIP, Flatpak and SOIC



Pin Assignment for LCC

AC Characteristics

Symbol	Parameter	V _{cc} * (V)	74AC			54AC		74AC		Units	Fig. No.
			T _A = +25°C C _L = 50 pF			T _A = -55°C to +125°C C _L = 50 pF		T _A = -40°C to +85°C C _L = 50 pF			
			Min	Typ	Max	Min	Max	Min	Max		
t _{PLH}	Propagation Delay Data to Output	3.3 5.0	1.0 1.0	6.0 5.0	9.0 7.0	1.0 1.0	12.0 9.5	1.0 1.0	10.0 7.5	ns	3-5
t _{PHL}	Propagation Delay Data to Output	3.3 5.0	1.0 1.0	6.0 4.5	9.0 7.0	1.0 1.0	11.0 9.0	1.0 1.0	10.5 7.5	ns	3-5
t _{PZH}	Output Enable Time	3.3 5.0	1.0 1.0	6.5 5.5	12.5 9.0	1.0 1.0	13.0 10.0	1.0 1.0	13.0 9.5	ns	3-7
t _{PZL}	Output Enable Time	3.3 5.0	1.0 1.0	7.0 5.5	12.0 9.0	1.0 1.0	13.0 10.0	1.0 1.0	13.0 9.5	ns	3-8
t _{PHZ}	Output Disable Time	3.3 5.0	1.0 1.0	8.0 6.5	12.0 10.0	1.0 1.0	13.0 11.5	1.0 1.0	12.5 10.5	ns	3-7
t _{PLZ}	Output Disable Time	3.3 5.0	1.0 1.0	7.0 6.0	12.5 10.0	1.0 1.0	13.0 11.5	1.0 1.0	13.5 10.5	ns	3-8

*Voltage Range 3.3 is 3.3 V ± 0.3 V
Voltage Range 5.0 is 5.0 V ± 0.5 V

5

AC Characteristics

Symbol	Parameter	V _{cc} * (V)	74ACT			54ACT		74ACT		Units	Fig. No.
			T _A = +25°C C _L = 50 pF			T _A = -55°C to +125°C C _L = 50 pF		T _A = -40°C to +85°C C _L = 50 pF			
			Min	Typ	Max	Min	Max	Min	Max		
t _{PLH}	Propagation Delay Data to Output	5.0	1.0	6.5	9.0	1.0	10.0	1.0	10.0	ns	3-5
t _{PHL}	Propagation Delay Data to Output	5.0	1.0	7.0	9.0	1.0	10.0	1.0	10.0	ns	3-5
t _{PZH}	Output Enable Time	5.0	1.0	6.0	9.0	1.0	11.5	1.0	10.0	ns	3-7
t _{PZL}	Output Enable Time	5.0	1.0	7.0	10.0	1.0	12.5	1.0	11.0	ns	3-8
t _{PHZ}	Output Disable Time	5.0	1.0	8.0	10.5	1.0	12.5	1.0	11.5	ns	3-7
t _{PLZ}	Output Disable Time	5.0	1.0	7.0	10.5	1.0	12.5	1.0	11.5	ns	3-8

*Voltage Range 5.0 is 5.0 V ± 0.5 V

Military parameters given herein are for general references only. For current military specifications and subgroup testing information please request Fairchild's Table I data sheet from your Fairchild sales engineer or account representative.

Capacitance

Symbol	Parameter	54/74AC/ACT	Units	Conditions
		Typ		
C _{IN}	Input Capacitance	4.5	pF	V _{CC} = 5.5 V
C _{PD}	Power Dissipation Capacitance	45.0	pF	V _{CC} = 5.5 V