

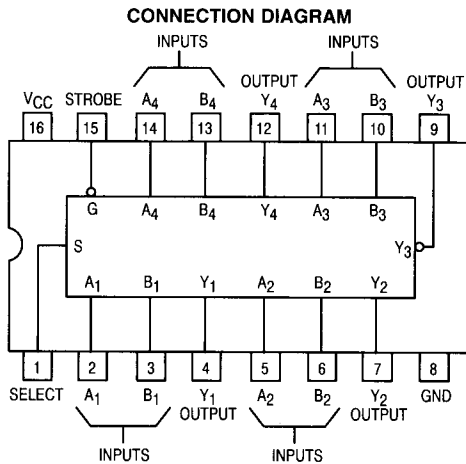


Quad 2-Input Data Selector/Multiplexer with Enable

ELECTRICALLY TESTED PER:
MIL-M-38510/30904

The LSTTL/MSI 54LS158 is a high-speed Quad 2-Input Multiplexer. It selects four bits of data from two sources using the common Select and Enable inputs. The four buffered outputs preset the selected data in the inverted form. The 'LS158 can also generate any four of the 16 different functions of two variables. The 'LS158 is fabricated with the Schottky barrier diode process for high speed and is completely compatible with all Motorola TTL families.

- Schottky Process For High-Speed
- Multifunction Capability
- Inverted Outputs
- Input Clamp Diodes Limit High-Speed Termination Effects



Military 54LS158



AVAILABLE AS:

- 1) JAN: JM38510/30904BXA
- 2) SMD: 7603301
- 3) 883: 54LS158/BXAJC

X = CASE OUTLINE AS FOLLOWS:
 PACKAGE: CERDIP: E
 CERFLAT: F
 LCC: 2

THE LETTER "M" APPEARS
 BEFORE THE / ON LCC.

PIN ASSIGNMENTS

FUNCT.	DIL 620-09	FLATS 650-05	LCC 756A-02	BURN-IN (COND. A)
S	1	1	2	VCC
A1	2	2	3	VCC
B1	3	3	4	VCC
Y1	4	4	5	VCC
A2	5	5	7	VCC
B2	6	6	8	VCC
Y2	7	7	9	VCC
GND	8	8	10	GND
Y3	9	9	12	VCC
B3	10	10	13	VCC
A3	11	11	14	VCC
Y4	12	12	15	VCC
B4	13	13	17	VCC
A4	14	14	18	VCC
G	15	15	19	VCC
VCC	16	16	20	VCC

BURN-IN CONDITIONS:
 VCC = 5.0 V MIN/6.0 V MAX

TRUTH TABLE

Enable	Select Inputs	Inputs		Output
G	S	A	B	\bar{Y}
H	X	X	X	H
L	L	L	X	H
L	L	H	X	L
L	H	X	L	H
L	H	X	H	L

H = HIGH Voltage Level
 L = LOW Voltage Level
 X = Don't Care

5

54LS158

FUNCTIONAL DESCRIPTION

The 'LS158 is a Quad 2-Input Multiplexer fabricated with the Schottky barrier diode process high speed. It selects four bits of data from two sources under the control of a common Select Input (S) and presets the data in inverted form at the four outputs. The Enable Input (G) is Active LOW. When G is HIGH, all of the outputs (Y) are forced HIGH regardless of all other inputs.

The 'LS158 is the logic implementation of a 4-pole, 2-position switch where the position of the switch is determined by the logic levels supplied to the Select Input.

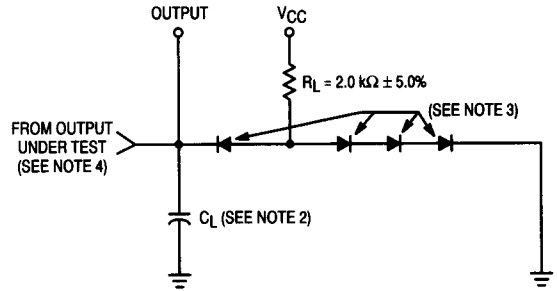
A common use of the 'LS158 is the moving of data from two groups of registers to four common output buses. The particular register from which the data comes is determined by the state of the Select Input. A less obvious use is as a function generator. The 'LS158 can generate four different functions of two variables with one variable common. This is useful for implementing gating functions.

Pin Names		Loading (Note a)	
		HIGH	LOW
S	Common Select Input	1.0 U.L.	0.5 U.L.
G	Enable (Active LOW) Input	1.0 U.L.	0.5 U.L.
A ₁ -A ₄	Data Inputs from Source 0	0.5 U.L.	0.25 U.L.
B ₁ -B ₄	Data Inputs from Source 1	0.5 U.L.	0.25 U.L.
Y ₁ -Y ₄	Multiplexer Outputs (Note b)	10 U.L.	5(2.5) U.L.

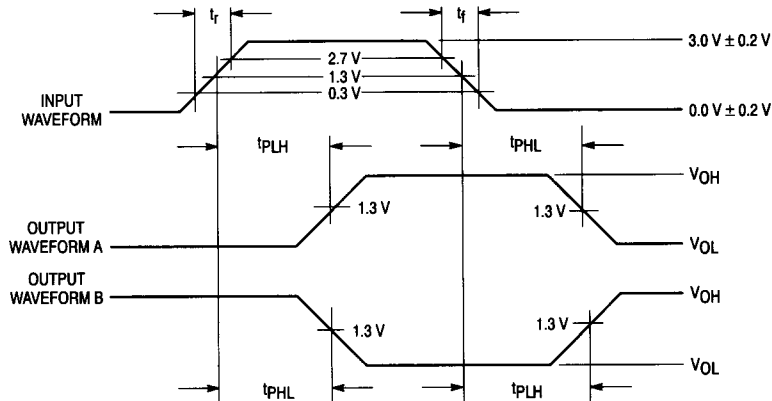
NOTES:

- One TTL Unit Load (U.L.) = 40 μ A HIGH/1.6 mA LOW.
- The Output LOW drive factor is 2.5 U.L. for Military (54) Temperature Ranges.

AC TEST CIRCUIT



WAVEFORMS



NOTES:

- Input pulse generator has the following characteristics:
 $t_r \leq 15$ ns, $t_f \leq 6.0$ ns, $PRR \leq 1.0$ MHz.
- $C_L = 50$ pF $\pm 10\%$, including scope probe and jig capacitance.
- $R_L = 2.0$ k Ω $\pm 5.0\%$. All diodes are 1N3064 or 1N916.
- Load circuit on a given output is only required where the specific test the Static Parameter table indicates "OUT" on that output.
- Voltage measurements are to be made with respect to network ground terminal.

54LS158

Symbol	Parameter	Limits						Unit	Test Condition (Unless Otherwise Specified)
		+ 25°C		+ 125°C		- 55°C			
		Subgroup 1		Subgroup 2		Subgroup 3			
Static Parameters:		Min	Max	Min	Max	Min	Max		
V _{OH}	Logical "1" Output Voltage	2.5		2.5		2.5		V	V _{CC} = 4.5 V, I _{OH} = -0.4 mA, G = 2.0 V, other inputs are open.
V _{OL}	Logical "0" Output Voltage		0.4		0.4		0.4	V	V _{CC} = 4.5 V, I _{OL} = 4.0 mA, G = 0.7 V, S = 2.0 V, V _{IN} = 2.0 V, other inputs are open.
V _{IC}	Input Clamping Voltage		-1.5					V	V _{CC} = 4.5 V, I _{IN} = -18 mA, other inputs are open.
I _{IH1}	Logical "1" Input Current		20		20		20	μA	V _{CC} = 5.5 V, V _{IH} = 2.7 V, other inputs are open, S = 5.5 V or GND.
I _{IHH1}	Logical "1" Input Current		100		100		100	μA	V _{CC} = 5.5 V, S = 5.5 V or GND, other inputs are open.
I _{IH2}	Logical "1" Input Current		40		40		40	μA	V _{CC} = 5.5 V, S & G = 2.7 V or GND, other inputs are open.
I _{IHH2}	Logical "1" Input Current		200		200		200	μA	V _{CC} = 5.5 V, S & G = 5.5 V or GND, other inputs are open.
I _{IL}	Logical "0" Input Current	-0.16	-0.4	-0.16	-0.4	-0.16	-0.4	mA	V _{CC} = 5.5 V, V _{IN} = 0.4 V, other input = 5.5 V, S = GND or 5.5 V, G = GND.
I _{IL(S)}	Logical "0" Input Current	-0.23	-0.71	-0.23	-0.71	-0.23	-0.71	mA	V _{CC} = 5.5 V, S = 0.4 V, G = 5.5 V, other inputs are open.
I _{IL(G)}	Logical "0" Input Current	-0.32	-0.8	-0.32	-0.8	-0.32	-0.8	mA	V _{CC} = 5.5 V, S = 5.5 V, G = 0.4 V, other inputs are open.
I _{OS}	Output Short Circuit Current	-15	-100	-15	-100	-15	-100	mA	V _{CC} = 5.5 V, S = open, G = 5.5 V, V _{OUT} = GND, other inputs are open.
I _{CC}	Power Supply Current		8.0		8.0		8.0	mA	V _{CC} = 5.5 V, V _{IN} = 5.5 V (all inputs).
V _{IH}	Logical "1" Input Voltage	2.0		2.0		2.0		V	V _{CC} = 4.5 V.
V _{IL}	Logical "0" Input Voltage		0.7		0.7		0.7	V	V _{CC} = 4.5 V.
	Functional Tests	Subgroup 7		Subgroup 8A		Subgroup 8B			per Truth Table with V _{CC} = 5.0 V, V _{INL} = 0.4 V, and V _{INH} = 2.5 V.

54LS158

Symbol	Parameter	Limits						Unit	Test Condition (Unless Otherwise Specified)
		+ 25°C		+ 125°C		- 55°C			
		Subgroup 9		Subgroup 10		Subgroup 11			
		Min	Max	Min	Max	Min	Max		
t _{PHL1} t _{PHL1}	Propagation Delay /Data-Output Data to Output	3.0 —	17 15	3.0 —	26 21	3.0 —	26 21	ns	V _{CC} = 5.0 V, C _L = 50 pF, R _L = 2.0 kΩ. V _{CC} = 5.0 V, C _L = 15 pF, R _L = 2.0 kΩ.
t _{PLH1} t _{PLH1}	Propagation Delay /Data-Output Data to Output	3.0 —	17 12	3.0 —	26 21	3.0 —	26 21	ns	V _{CC} = 5.0 V, C _L = 50 pF, R _L = 2.0 kΩ. V _{CC} = 5.0 V, C _L = 15 pF, R _L = 2.0 kΩ.
t _{PHL3} t _{PHL3}	Propagation Delay /Data-Output Enable to Output	3.0 —	23 24	3.0 —	35 30	3.0 —	35 30	ns	V _{CC} = 5.0 V, C _L = 50 pF, R _L = 2.0 kΩ. V _{CC} = 5.0 V, C _L = 15 pF, R _L = 2.0 kΩ.
t _{PLH3} t _{PLH3}	Propagation Delay /Data-Output Enable to Output	3.0 —	22 17	3.0 —	33 28	3.0 —	33 28	ns	V _{CC} = 5.0 V, C _L = 50 pF, R _L = 2.0 kΩ. V _{CC} = 5.0 V, C _L = 15 pF, R _L = 2.0 kΩ.
t _{PHL5} t _{PHL5}	Propagation Delay /Data-Output Select to Output	3.0 —	29 24	3.0 —	44 39	3.0 —	44 39	ns	V _{CC} = 5.0 V, C _L = 50 pF, R _L = 2.0 kΩ. V _{CC} = 5.0 V, C _L = 15 pF, R _L = 2.0 kΩ.
t _{PLH5} t _{PLH5}	Propagation Delay /Data-Output Select to Output	3.0 —	25 20	3.0 —	38 33	3.0 —	38 33	ns	V _{CC} = 5.0 V, C _L = 50 pF, R _L = 2.0 kΩ. V _{CC} = 5.0 V, C _L = 15 pF, R _L = 2.0 kΩ.

NOTE:

1. The limits specified for C_L = 15 pF are guaranteed but not tested.