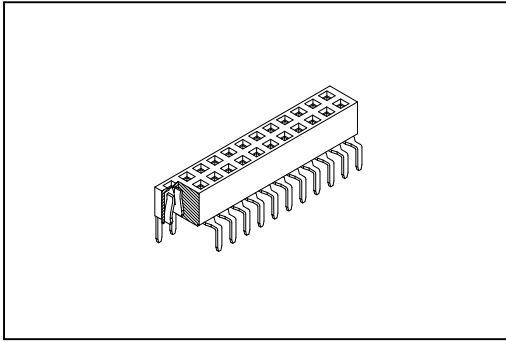


# 2148 Series

**P.C.B. Socket**  
**2.0mmX2.0mm(0.079"X0.079")**



### Material:

Housing: High Temperature Plastic UL94V-0.

Contacts: Copper Alloy.

### Electrical Characteristics:

Current Rating: 1 A.

Dielectric Withstanding Voltage: AC 500V.

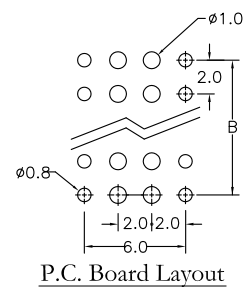
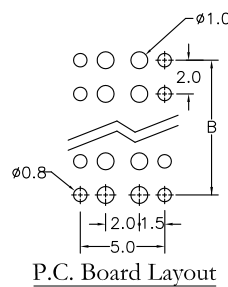
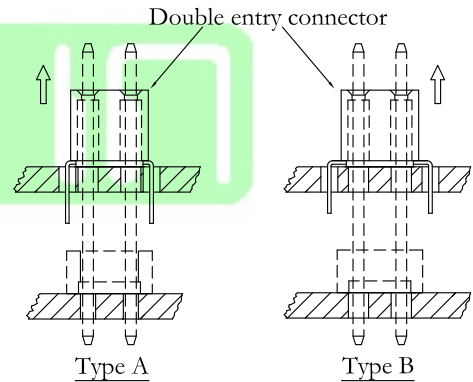
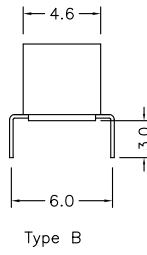
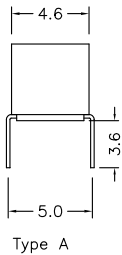
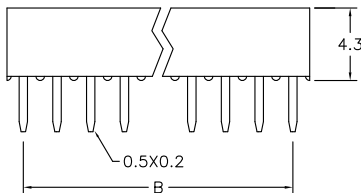
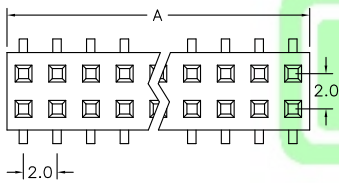
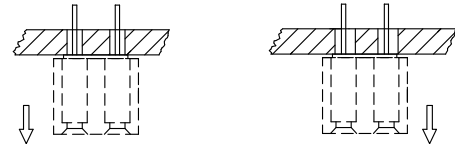
Insulator Resistance: 1000MΩ min.

Contact Resistance: 20mΩ max.

Operating Temperature: -65°C~+125°C.

### Features:

- \* Bottom entry, Pass through or Top entry.
  - \* Low profile 4.30mm(0.169").
  - \* Choice of two different foot print.
  - \* Mates with 0.5mm(0.02") square pin.
  - \* Additional plating options available.
- Mates with: 2111,2112,2113,2114,2115.



Position Dimension	6 Thru 80
A	2.0 X No. of Positions
B	2.0 X No. of Positions/2-2.0

## Ordering information

**2148-** Series   
**2** Double Row   
**X** No. of Pin Per Row   
**40**   
**G** G: Gold Plated   
**00** 00: G/F   
**A** A: 2.0mm X 5.0mm  
 B: 2.0mm X 6.0mm   
**U** U: Tube Package