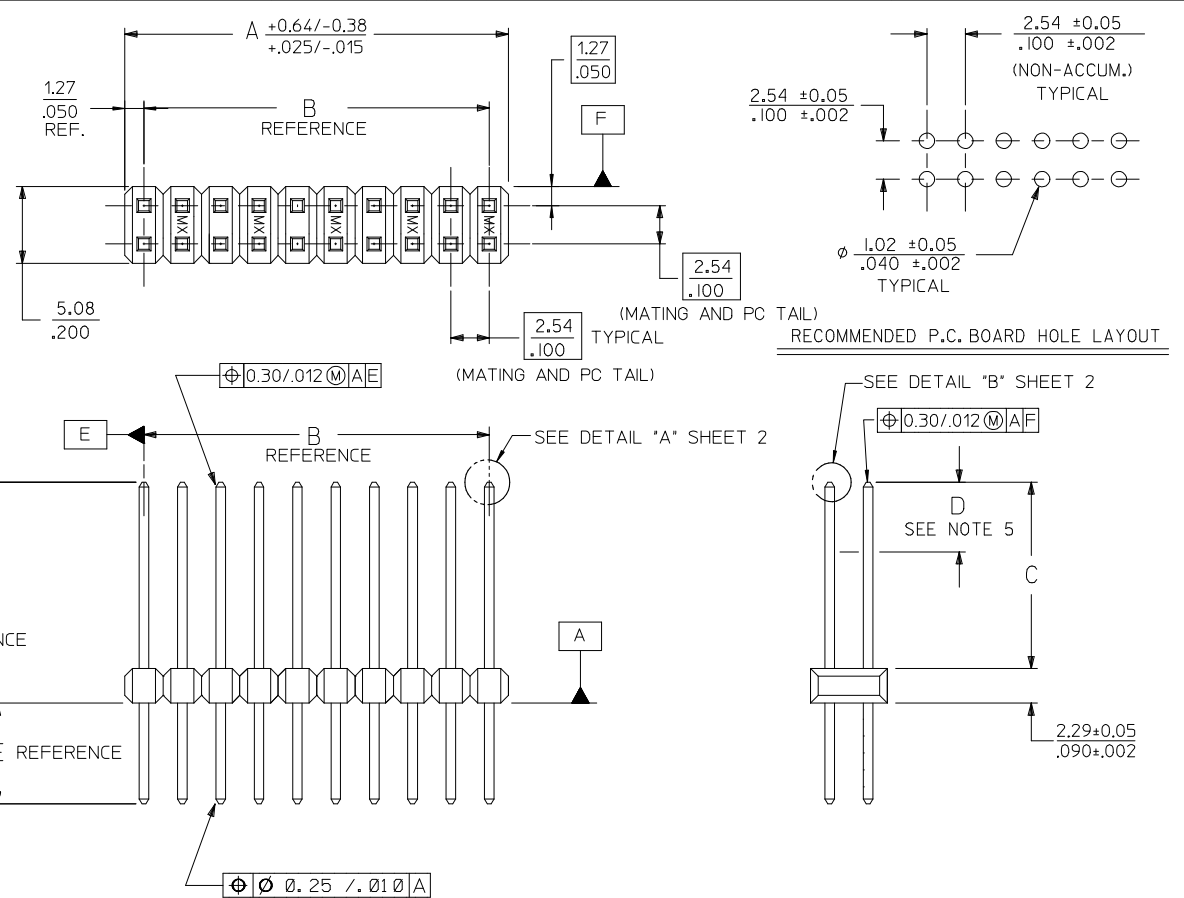


CKT. SIZE	DIM. A REF.		DIM. B	
	MM	INCH	MM	INCH
4	5.08	.200	2.54	.100
6	7.62	.300	5.08	.200
8	10.16	.400	7.62	.300
10	12.70	.500	10.16	.400
12	15.24	.600	12.70	.500
14	17.78	.700	15.24	.600
16	20.32	.800	17.78	.700
18	22.86	.900	20.32	.800
20	25.40	1.000	22.86	.900
22	27.94	1.100	25.40	1.000
24	30.48	1.200	27.94	1.100
26	33.02	1.300	30.48	1.200
28	35.56	1.400	33.02	1.300
30	38.10	1.500	35.56	1.400
32	40.64	1.600	38.10	1.500
34	43.18	1.700	40.64	1.600
36	45.72	1.800	43.18	1.700
38	48.26	1.900	45.72	1.800
40	50.80	2.000	48.26	1.900
42	53.34	2.100	50.80	2.000
44	55.88	2.200	53.34	2.100
46	58.42	2.300	55.88	2.200
48	60.96	2.400	58.42	2.300
50	63.50	2.500	60.96	2.400
52	66.04	2.600	63.50	2.500
54	68.58	2.700	66.04	2.600
56	71.12	2.800	68.58	2.700
58	73.66	2.900	71.12	2.800
60	76.20	3.000	73.66	2.900
62	78.74	3.100	76.20	3.000
64	81.28	3.200	78.74	3.100
66	83.82	3.300	81.28	3.200
68	86.36	3.400	83.82	3.300
70	88.90	3.500	86.36	3.400
72	91.44	3.600	88.90	3.500
74	93.98	3.700	91.44	3.600
76	96.52	3.800	93.98	3.700
78	99.06	3.900	96.52	3.800
80	101.06	4.000	99.06	3.900
82	104.14	4.100	101.06	4.000
84	106.68	4.200	104.14	4.100
86	109.22	4.300	106.68	4.200
88	111.76	4.400	109.22	4.300
90	114.30	4.500	111.76	4.400
92	116.84	4.600	114.30	4.500
94	119.38	4.700	116.84	4.600
96	121.92	4.800	119.38	4.700
98	124.46	4.900	121.92	4.800
100	127.00	5.000	124.46	4.900

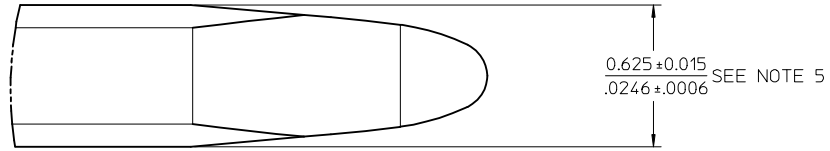
**NOTES:**

- MATERIAL: WAFER- GLASS FILLED LCP (LIQUID CRYSTAL POLYMER), UL 94V-0, COLOR: BLACK  
PIN- COPPER ALLOY
- FINISH: (BRIGHT TIN) 0.00381/.000150 MINIMUM TIN PLATE OVER NICKEL UNDERPLATE
- PRODUCT SPECIFICATION: PS-70280
- PACKAGING INFORMATION: PACKAGE IN TUBES PER PK-70873-0276 UNLESS OTHERWISE NOTED IN TABLES.
- DIMENSION D IS THE MEASURE POINT FOR PLATING THICKNESS AND PIN WIDTH.
- WAFER TO BE FLAT WITHIN (0.003 MM/MM) OR .003 IN./IN.
- PIN DIMENSION SHOULD BE SYMMETRICAL WITHIN TOLERANCE SHOWN.
- ALL PIN TIPS AND EDGES MAY BE RADIUSED - R(0.127)/.005 MAXIMUM.
- NO BURRS ON TIPS OR PIN EDGES.
- ALL PIN DIMENSIONS INCLUDE PLATING.

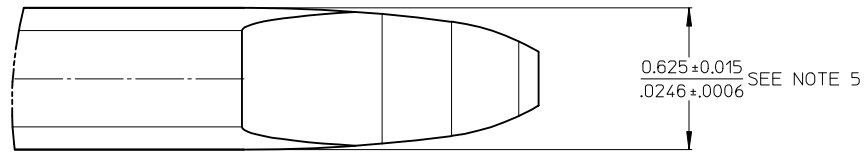
- PIN PUSHOUT FORCE 3 LBS. MINIMUM (IN EITHER DIRECTION)
- FOR ILLUSTRATION PURPOSES, 20 (DUAL 10) CIRCUIT SIZE SHOWN.
- PINS MUST MEET SOLDERABILITY SPECIFICATION SMES-152. VOIDS PERMISSIBLE AT BANDOLIER FAYING SURFACE. (APPROXIMATELY 0.64/.025 LNG X 0.15/.006 WIDE REF.) - 2 LOCATIONS.
- THIS PART CONFORMS TO CLASS B REQUIREMENTS OF COSMETIC SPECIFICATION PS-45499-002.



CORRECT DIM E EC NO: UCP2014-2514 DRWN:KIPPER 2013/12/12 CHKD:JBELL 2013/12/17 APPR:FSMLTH 2013/12/19	QUALITY SYMBOLS ▽=0 ▽=0 ▽=0	GENERAL TOLERANCES (UNLESS SPECIFIED)		DIMENSION STYLE MM/IN		SCALE 4:1	DESIGN UNITS INCH	THIRD ANGLE PROJECTION	
		4 PLACES ± --- ± ---	3 PLACES ± --- ± .005	2 PLACES ± 0.13 ± .01	1 PLACE ± 0.25 ± ---	0 PLACE ± ±	DRAWN BY DATE BSMART 01/19/2005		CHECKED BY DATE BBARKER 01/19/2005
D2	REV	ANGULAR ±1/2°		MATERIAL NO.		DOCUMENT NO.		SHEET NO.	
		DRAFT WHERE APPLICABLE MUST REMAIN WITHIN DIMENSIONS		SEE TABLE		SD-70280-001		1 OF 3	
THIS DRAWING CONTAINS INFORMATION THAT IS PROPRIETARY TO MOLEX INCORPORATED AND SHOULD NOT BE USED WITHOUT WRITTEN PERMISSION									



DETAIL "A"  
SCALE 30:1



DETAIL "B"  
SCALE 30:1

<b>CHANGE PIN</b> EC NO: UCP2008-1376 DRAWING: GAVRILL 2009/06/30 CHKD: JBELL 2009/07/01 APPR: FSMITH 2009/07/01	QUALITY SYMBOLS ▽=0 ▽=0	GENERAL TOLERANCES (UNLESS SPECIFIED)		DIMENSION STYLE <b>MM ONLY</b>		SCALE ---	DESIGN UNITS METRIC	THIRD ANGLE PROJECTION			
		4 PLACES ± --- ± ---	3 PLACES ± --- ± ---	2 PLACES ± --- ± ---	1 PLACE ± --- ± ---	DRAWN BY BSMART	DATE 01/19/2005	TITLE SALES ASSY-HIGH TEMP. DUAL ROW WAFER W/BREAK-OFF OPTION .025			
		ANGULAR ±1/2°				CHECKED BY BBARKER	DATE 01/19/2005	APPROVED BY SMILELR 01/19/2005			
		DRAFT WHERE APPLICABLE MUST REMAIN WITHIN DIMENSIONS		MATERIAL NO. SEE TABLE		DOCUMENT NO. SD-70280-001		SHEET NO. 2 OF 3		MOLEX INCORPORATED	

	13	12	11	10	9	8	7	6	5	4	3	2	1	
J	ENGINEERING NUMBER A-70280-				E REF.	J REF.	C ±(0.25) ±.010			CONNECTOR END PLATING		P.C. BOARD END PLATING		FOR PACKAGING INFORMATION. SEE NOTE 4, SHEET 1 (UNLESS OTHERWISE SPECIFIED BELOW)
	-4400/-4448				3.76 .148	15.88 .625	9.83 .387			BRIGHT TIN	D MEAS. 4.57 .180	BRIGHT TIN		
I														
H														

CKTS	ITEM NUMBER	ITEM NUMBER	ITEM NUMBER	ITEM NUMBER	CKTS
04	70280-4400				04
06	70280-4401				06
08	70280-4402				08
10	70280-4403				10
12	70280-4404				12
14	70280-4405				14
16	70280-4406				16
18	70280-4407				18
20	70280-4408				20
22	70280-4409				22
24	70280-4410				24
26	70280-4411				26
28	70280-4412				28
30	70280-4413				30
32	70280-4414				32
34	70280-4415				34
36	70280-4416				36
38	70280-4417				38
40	70280-4418				40
42	70280-4419				42
44	70280-4420				44
46	70280-4421				46
48	70280-4422				48
50	70280-4423				50
52	70280-4424				52
54	70280-4425				54
56	70280-4426				56
58	70280-4427				58
60	70280-4428				60
62	70280-4429				62
64	70280-4430				64
66	70280-4431				66
68	70280-4432				68
70	70280-4433				70
72	70280-4434				72
74	70280-4435				74
76	70280-4436				76
78	70280-4437				78
80	70280-4438				80

CKTS	ITEM NUMBER	ITEM NUMBER	ITEM NUMBER	ITEM NUMBER	CKTS
82	70280-4439				82
84	70280-4440				84
86	70280-4441				86
88	70280-4442				88
90	70280-4443				90
92	70280-4444				92
94	70280-4445				94
96	70280-4446				96
98	70280-4447				98
100	70280-4448				100

A	B	OBSOLETE P/N'S FC. NO.: UICP2007-3007 DRAWN: NKP/PPER 2007/05/30 CHKD: ADERR 2007/05/31 APPR: FSM/TH 2007/06/04	QUALITY SYMBOLS	GENERAL TOLERANCES (UNLESS SPECIFIED)	DIMENSION STYLE		SCALE ---	DESIGN UNITS INCH	THIRD ANGLE PROJECTION	TITLE SALES ASSY-HIGH TEMP. DUAL ROW WAFER W/BREAK-OFF OPTION, .025 SQ PINS
			$\nabla=0$ $\sphericalangle=0$		MM/IN					
			C2	mm	INCH	DRAWN BY BSMART	DATE 01/19/2005			
A	B	OBSOLETE P/N'S FC. NO.: UICP2007-3007 DRAWN: NKP/PPER 2007/05/30 CHKD: ADERR 2007/05/31 APPR: FSM/TH 2007/06/04		4 PLACES ± --- ± ---	CHECKED BY BBARKER	DATE 01/19/2005	MATERIAL NO.			
				3 PLACES ± --- ±.005	APPROVED BY SMILLER	DATE 01/19/2005	DOCUMENT NO.			
				2 PLACES ± 0.13 ± .01 1 PLACE ± 0.25 ± --- ANGULAR ±1/2°	SEE TABLE			SD-70280-001		SHEET NO. 3 OF 3
A	B	OBSOLETE P/N'S FC. NO.: UICP2007-3007 DRAWN: NKP/PPER 2007/05/30 CHKD: ADERR 2007/05/31 APPR: FSM/TH 2007/06/04		DRAFT WHERE APPLICABLE MUST REMAIN WITHIN DIMENSIONS	THIS DRAWING CONTAINS INFORMATION THAT IS PROPRIETARY TO MOLEX INCORPORATED AND SHOULD NOT BE USED WITHOUT WRITTEN PERMISSION					

lb_frame_C_P_ME_T Rev. E 2006/04/15	12	11	10	9	8	7	6	5	4	3	2	1
--	----	----	----	---	---	---	---	---	---	---	---	---