

Customer Information Sheet

DRAWING No.: M80-820XXXX

SHEET 2 OF 2

IF IN DOUBT - ASK

©

NOT TO SCALE

THIRD ANGLE PROJECTION

ALL DIMENSIONS IN mm

ORDER CODE:

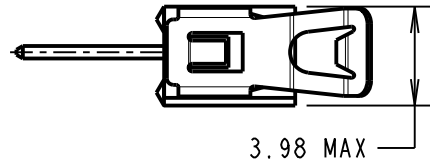
M80-820XXXX

TOTAL No. OF WAYS
02-07, 17, 22

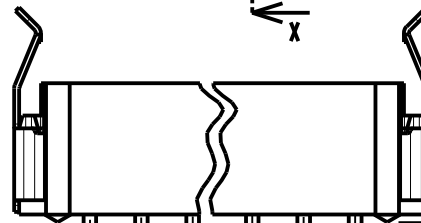
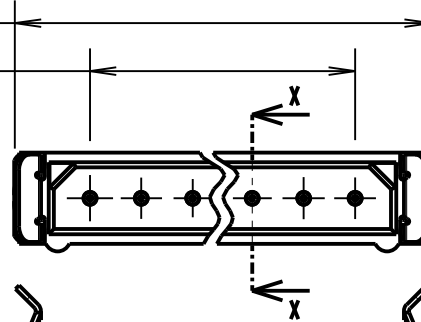
FINISH
05 - GOLD
22 - SELECTIVE GOLD

2.00 x No. OF WAYS + 4.10 MAX

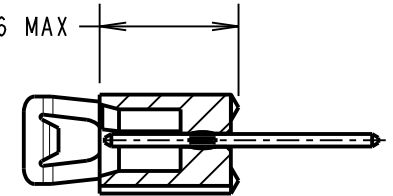
2.00 x No. OF PITCHES



3.98 MAX



5.56 MAX



SECTION X-X

NOTES:

- 2-OFF STRAIN RELIEF STRAPS M80-0030006 CAN BE ORDERED SEPARATELY IF REQUIRED.

SPECIFICATIONS:

MATERIAL:

MOULDING = GLASS-FILLED POLYESTER UL94V-0, BLACK

CONTACTS = PHOSPHOR BRONZE

LATCH = BERYLLIUM COPPER

FINISH:

CONTACTS:

05 = 0.75µ GOLD

22 = 0.75µ GOLD ON CONTACT AREA, 3.0µ 90/10 TIN/LEAD ON TAILS

LATCH = 1.25µ NICKEL

ELECTRICAL:

CURRENT RATING AT 25°C = 3.0A MAX

CURRENT RATING AT 85°C = 2.2A MAX

WORKING VOLTAGE = 120V AC/DC

VOLTAGE PROOF = 360V AC/DC

CONTACT RESISTANCE (INITIAL) = 20 mΩ MAX

CONTACT RESISTANCE (AFTER CONDITIONING) = 25 mΩ MAX

INSULATION RESISTANCE (INITIAL) = 1,000 MΩ MIN

INSULATION RESISTANCE (AFTER CONDITIONING) = 100 MΩ MIN

MECHANICAL:

DURABILITY = 500 OPERATIONS

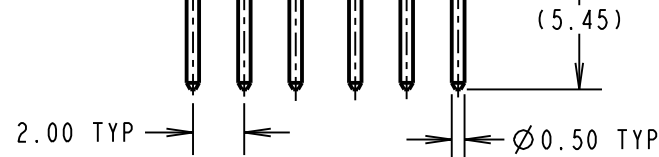
ENVIRONMENTAL:

TEMPERATURE RANGE = -55°C TO +125°C

PACKING:

TUBE

FOR COMPLETE SPECIFICATION, SEE COMPONENT SPECIFICATION C005XX (LATEST ISSUE)



2.00 x No. OF PITCHES

2.25 TYP

Ø 0.80 MAX TYP

2.375 TYP

Ø 0.90 MIN TYP
STRAIN RELIEF STRAP HOLES
(OPTIONAL)

4.75

2.00 TYP

RECOMMENDED PCB LAYOUT

BRITISH STANDARD ORDER CODE:

B5743-1XX-M-T-X

TOTAL No. OF WAYS
02-07, 17, 22

FINISH:

A = GOLD

T = SELECTIVE GOLD

SM	5	07.06.11	10832
NAME	ISS.	DATE	C/NOTE
APPROVED: S. MCCULLAGH			
CHECKED: M. G. PLESTED			
DRAWN:		A. LIOTTA	
CUSTOMER REF.:			
ASSEMBLY DRG:			

HARWIN

HARWIN USA TEL: 603 893 5376 FAX: 603 893 5396 mis@harwin.com	HARWIN Europe (UK) TEL: 023 9231 4545 FAX: 023 9231 4590 mis@harwin.co.uk	HARWIN Asia TEL: +65 6 779 4909 FAX: +65 6 779 3868 mis@harwin.com.sg
--	--	--

THIS DRAWING AND ANY INFORMATION OR DESCRIPTIVE MATTER SET OUT HEREON ARE CONFIDENTIAL AND COPYRIGHT PROPERTY OF THE HARWIN GROUP AND MUST NOT BE DISCLOSED, LOANED, COPIED OR USED FOR MANUFACTURING, TENDERING OR FOR ANY OTHER PURPOSE WITHOUT THEIR WRITTEN PERMISSION.

TOLERANCES

X. = ±1mm
X.X = ±0.25mm
X.XX = ±0.10mm
X.XXX = ±0.01mm

ANGLES = ±5°

UNLESS STATED

MATERIAL:

SEE ABOVE

FINISH:

S/AREA:

mm²

TITLE: DATAMATE 2mm PITCH
VERTICAL PC TAIL SIL PLUG
ASSEMBLY - LATCHED

DRAWING NUMBER:

M80-820XXXX

SHT
2
OF
2