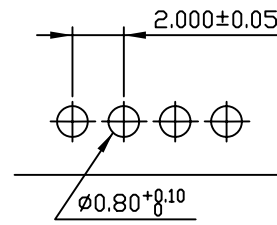


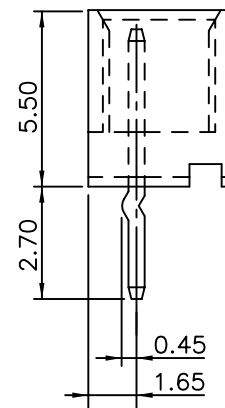
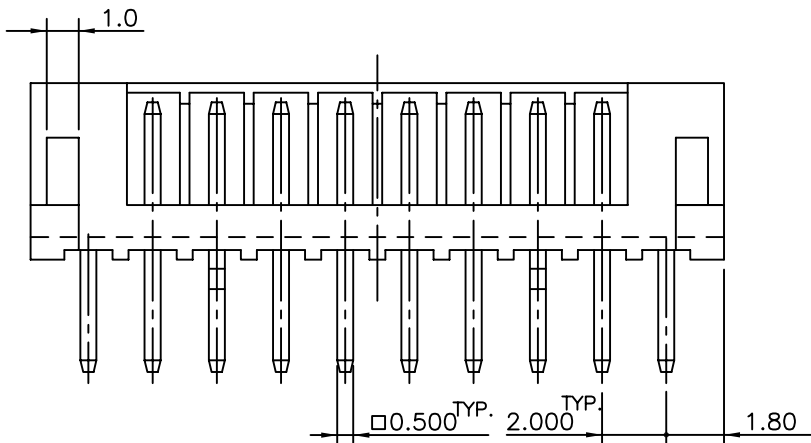
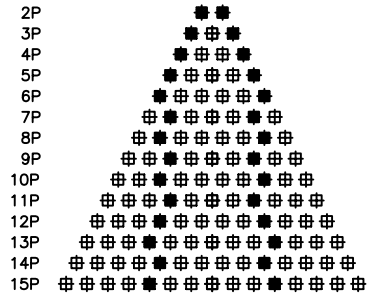
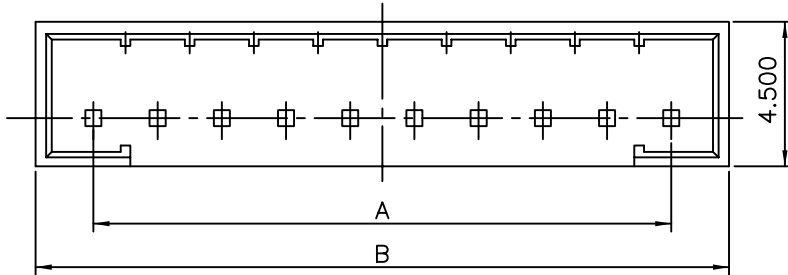
*** 2013 ***

Material :
 Insulator : UL 94V-0 NYLON 6/6
 * Contact : Brass
 * Plating : Tin



RECOMMENDED HOLE PATTERN

NOTE: Position of kink Pin's



Circuits	Dim.A	Dim.B	Circuits	Dim.A	Dim.B
2	2.000	5.6	10	18.00	21.6
3	4.000	7.6	11	20.00	23.6
4	6.000	9.6	12	22.00	25.6
5	8.000	11.6	13	24.0	27.6
6	10.000	13.6	14	26.0	29.6
7	12.000	15.6	15	28.0	31.6
8	14.00	17.6	16	30.0	33.6
9	16.00	19.6	17	32.0	35.6

LECO CORPORATION				APPROVED: DAN 11.4		PART NO.: 2013P**000L			
				DATE:		CHECKED: SHOU 11.4		TITLE: HEADER	
GENERAL TOLERANCE X. ± X' ± 2° .X ± $\frac{0.30}{.012}$.X' ± 1° .XX ± $\frac{0.20}{.008}$.XX' ± 0.5° .XXX ± $\frac{0.10}{.004}$.XXX' ± 0.1°				DATE:		DRAWING NO.: 201301SA			
				DRAWN: JANE 11.4		DATE:		UNITS	
A	DWG REL					SCALE	SIZE	SHEET	REV.
REV.	ECO. NO.	CHG.	APP.	$\frac{mm}{inch}$		~	A4	1/1	A