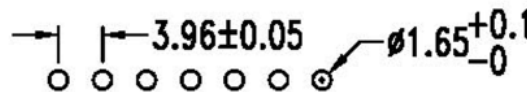
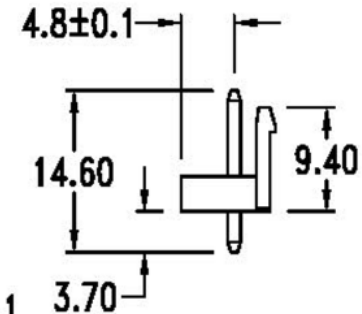
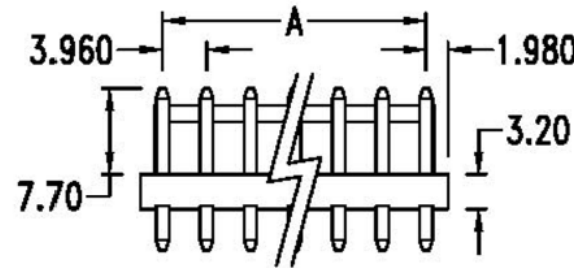
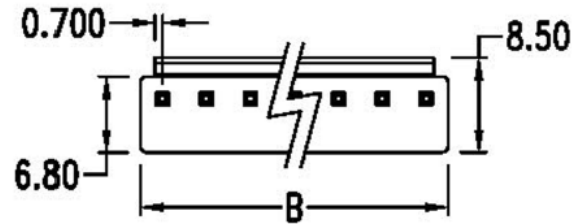


SPECIFICATIONS


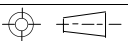
Current rating: 7 amps
 Voltage rating: 250 volts
 Pins: 0.045" square
 Contact resistance: 20 milliohms max.
 Insulator material: Nylon 66, UL94V-0, white
 Withstanding: 1500 VAC for 1 min.
 Temperature range: -25°C to +85°C

Dimensions		
Pins	A	B
2	3.96	7.92
3	7.92	11.88
4	11.88	15.84
5	15.84	19.80
6	19.80	23.76
7	23.76	27.72
8	27.72	31.68
9	31.68	35.64
10	35.64	39.60
11	39.60	43.56
12	43.56	47.52



P. C. B. hole dimensions

RoHS compliant

Rev.	Description	Date	Approved	Drawing	Name	Date	 Central Components Manufacturing 440 Lincoln Blvd., Middlesex, New Jersey 08846 Phone 732 469-5720 888 288-5152 Fax 732 469-1919
				Approved	Howard	08/10/99	
				Checked	Lizzy	08/10/99	
				Drawn	Tina	08/10/99	
0.0 ± 0.35 0.00 ± 0.20 Angles ± 3'							Part No.: JS-9397-XX Description: Power header, 0.156" pitch
 UNIT: mm							