

D-Subminiature Commercial Metal Shell

.109" (2.77mm) Density
Wire Wrap
Basic D

CINCH

Features

- Available in 5 connector sizes: 9, 15, 25, 37, and 50, with wire wrap terminals
- Variety of shell styles available
- Indented shell styles available for ground wire soldering
- Intermateable with all D-Subminiature Connectors of comparable pin count and complying dimensionally with MIL-C-24308
- UL Recognized file no. E19071
- CSA Certified file no. LR31996-3

Performance Data

Materials

Insulation Material: Two-piece glass-filled polyester, UL94V0

Contact Material:

Plug Contacts: Brass (machined)
Socket Contacts: Phosphor bronze (machined)

Contact Plating: Gold flash over nickel (For 30 μinch gold plating, consult factory)

Shell Material: Steel

Shell Plating: Zinc with yellow chromate coating or bright tin

Electrical Characteristics

Withstanding Voltage: 1250 VAC rms (@ sea level)

Current Rating: 5 Amps

Contact Resistance: 2.7 Milliohms maximum

Insulation Resistance: 5000 Megohms minimum

Mechanical Characteristics

Individual Contact Insertion and Separation Force: 0.7 oz. (20g) minimum, 12 oz (341g) maximum

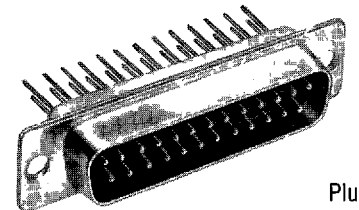
Environmental Characteristics

Shock: Exceeds test requirements of MIL-STD-202D, Method 213, Condition G

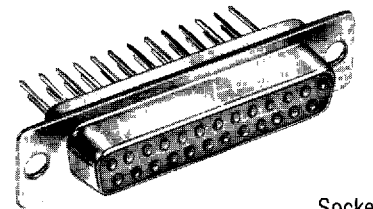
Operating Temperature: with nylon insulator - 65°C to + 125°C

Vibration: Exceeds requirements of MIL-STD-202D, Method 204, Condition D

Humidity: Exceeds requirements of MIL-STD-202D, Method 106



Plug

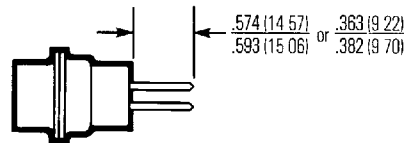


Socket

Accessories

For metal shell D-Subminiature Connector accessories see pages 34 through 45.

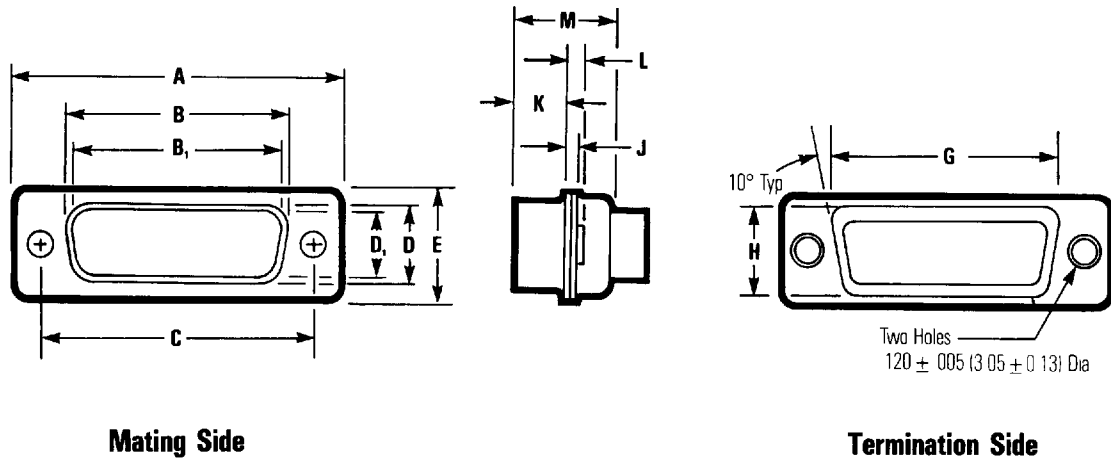
Dimensions



For standard shell dimensions and panel cutouts, see pages 5 and 6

Ordering Information

D	B	E	- 25	P	T	I - F179C
Series Prefix D-Subminiature	Mounting Method (Optional) No Entry = 120" (3.05mm) Hole E = 4-40 Clinch Nut F = Front Float Bushing R = Reverse Float Bushing Y = Dual Float Mount Bushing	No. of Contacts 09 15 25 37 50	Contact Type P = Plug S = Socket	Shell Finish (Optional) No Entry = Zinc/Yellow Chromate T = Bright Tin	Modification (Optional) I = Grounding Indents (Available on plugs with tinned shells only)	Contact Style F179 = Wire Wrap 363"- 382" long F179C = Wire Wrap 574"- 593" long
Shell Size E = 09 A = 15 B = 25 C = 37 D = 50						



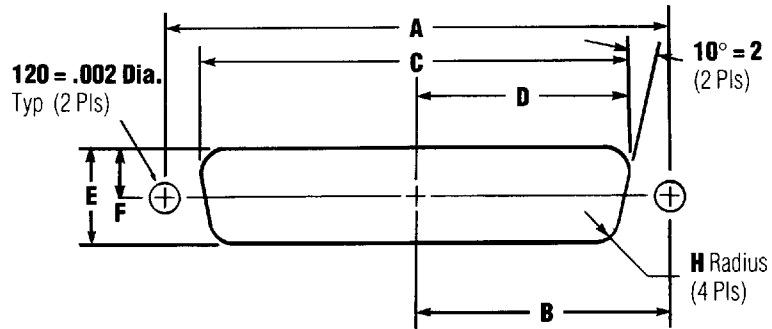
Dimensions

Shell Size	Connector Type	A ± .015" (0.38mm)		B ± .010" (0.25mm)		B ₁ ± .005" (0.13mm)		C ± .005" (0.13mm)		D ± .010" (0.25mm)		D ₁ ± .010" (0.25mm)		E ± .015" (0.38mm)	
		in	mm	in	mm	in	mm	in	mm	in	mm	in	mm	in	mm
E	Plug	1.213	30.81	—	—	.666	16.90	.0984	24.99	—	8.40	.329	—	.494	12.55
	Socket	1.213	30.81	.640	16.26	—	—	.0984	24.99	.308	—	—	.782	.494	12.55
A	Plug	1.541	39.14	—	—	.994	25.30	1.312	33.32	—	8.40	.329	—	.494	12.55
	Socket	1.541	39.14	.968	24.59	—	—	1.312	33.32	.308	—	—	.782	.494	12.55
B	Plug	2.088	53.04	—	—	1.534	39.00	1.852	47.04	—	8.40	.329	—	.494	12.55
	Socket	2.088	53.04	1.508	38.30	—	—	1.852	47.04	.308	—	—	.782	.494	12.55
C	Plug	2.729	69.32	—	—	2.182	55.40	2.500	63.50	—	8.40	.329	—	.494	12.55
	Socket	2.729	69.32	2.156	54.76	—	—	2.500	63.50	.308	—	—	.782	.494	12.55
D	Plug	2.635	66.93	—	—	2.079	52.80	2.406	61.11	—	11.07	.436	—	.605	15.37
	Socket	2.635	66.93	2.062	52.34	—	—	2.406	61.11	.420	—	—	10.67	.605	15.37

Shell Size	Connector Type	G ± .010" (0.25mm)		H ± .010" (0.25mm)		J ± .010" (0.25mm)		K ± .010" (0.25mm)		L ± .010" (0.25mm)		M ± .010" (0.25mm)	
		in	mm	in	mm	in	mm	in	mm	in	mm	in	mm
E	Plug	.759	19.28	.422	10.72	.030	0.76	.236	5.99	.045	1.14	.422	10.72
	Socket	.759	19.28	.422	10.72	.030	0.76	.243	6.17	.045	1.14	.429	10.92
A	Plug	1.083	27.51	.422	10.72	.030	0.76	.236	5.99	.045	1.14	.422	10.72
	Socket	1.083	27.51	.422	10.72	.030	0.76	.243	6.17	.045	1.14	.429	10.92
B	Plug	1.625	41.27	.422	10.72	.039	0.99	.231	5.87	.060	1.52	.426	10.82
	Socket	1.625	41.27	.422	10.72	.030	0.76	.243	6.17	.045	1.14	.429	10.92
C	Plug	2.272	57.71	.422	10.72	.039	0.99	.231	5.87	.060	1.52	.426	10.82
	Socket	2.272	57.71	.422	10.72	.030	0.76	.243	6.17	.045	1.14	.429	10.92
D	Plug	2.178	55.32	.534	13.56	.039	0.99	.231	5.87	.060	1.52	.426	10.82
	Socket	2.178	55.32	.534	13.56	.030	0.76	.243	6.17	.045	1.14	.429	10.92

B and D are outside dimensions for socket. B₁ and D₁ are inside dimensions for plug

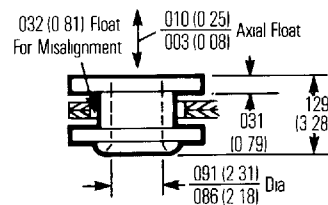
Panel Mounting Specifications



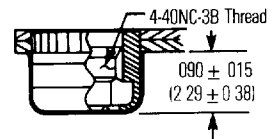
Dimensions

Shell Size	Mounting Method Front/Rear Panel	Dimensions (inches)						
		A	B	C	D	E	F	H
E	Front	0.98	0.49	0.87	0.44	0.51	0.26	0.08
	Rear	0.98	0.49	0.81	0.40	0.45	0.23	0.13
A	Front	1.31	0.66	1.10	0.60	0.51	0.26	0.08
	Rear	1.31	0.66	1.13	0.57	0.45	0.23	0.13
B	Front	1.85	0.93	1.74	0.87	0.51	0.26	0.08
	Rear	1.85	0.93	1.67	0.84	0.45	0.23	0.13
C	Front	2.50	1.25	2.39	1.20	0.51	0.26	0.08
	Rear	2.50	1.25	2.33	1.16	0.45	0.23	0.13
D	Front	2.41	1.20	2.30	1.15	0.62	0.31	0.08
	Rear	2.41	1.20	2.22	1.11	0.56	0.28	0.13

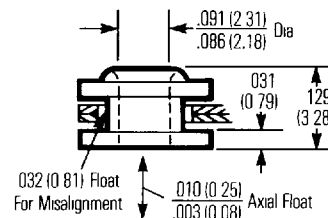
Float Bushing



4-40 Clinch Nut



Reverse Float Bushing



Floating Dual Bushing

