

30A, 700V - 1000V Hyperfast Dual Diodes

RHRG3070CC, RHRG3080CC, RHRG3090CC, and RHRG30100CC (TA49064) are hyperfast dual diodes with soft recovery characteristics ($t_{RR} < 65\text{ns}$). They have half the recovery time of ultrafast diodes and are silicon nitride passivated ion-implanted epitaxial planar construction.

These devices are intended for use as freewheeling/clamping diodes and rectifiers in a variety of switching power supplies and other power switching applications. Their low stored charge and hyperfast soft recovery minimize ringing and electrical noise in many power switching circuits reducing power loss in the switching transistors.

PACKAGING AVAILABILITY

PART NUMBER	PACKAGE	BRAND
RHRG3070CC	TO-247	RHRG3070C
RHRG3080CC	TO-247	RHRG3080C
RHRG3090CC	TO-247	RHRG3090C
RHRG30100CC	TO-247	RHR30100C

NOTE: When ordering, use the entire part number.

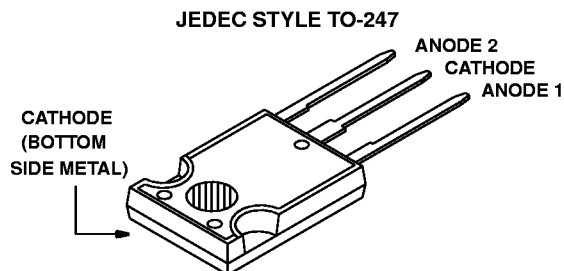
Features

- Hyperfast with Soft Recovery <65ns
- Operating Temperature +175°C
- Reverse Voltage Up To 1000V
- Avalanche Energy Rated
- Planar Construction

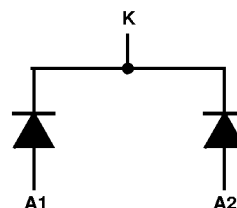
Applications

- Switching Power Supplies
- Power Switching Circuits
- General Purpose

Package



Symbol



Absolute Maximum Ratings (per leg) $T_C = +25^\circ\text{C}$, Unless Otherwise Specified

	RHRG3070CC	RHRG3080CC	RHRG3090CC	RHRG30100CC	UNITS
Peak Repetitive Reverse Voltage V_{RRM}	700	800	900	1000	V
Working Peak Reverse Voltage V_{RWM}	700	800	900	1000	V
DC Blocking Voltage V_R	700	800	900	1000	V
Average Rectified Forward Current $I_{F(AV)}$ ($T_C = +95^\circ\text{C}$)	30	30	30	30	A
Repetitive Peak Surge Current I_{FSM} (Square Wave, 20kHz)	70	70	70	70	A
Nonrepetitive Peak Surge Current I_{FSM} (Halfwave, 1 Phase, 60Hz)	325	325	325	325	A
Maximum Power Dissipation P_D	125	125	125	125	W
Avalanche Energy (see Figures 10 and 11) E_{AVL}	20	20	20	20	mj
Operating and Storage Temperature T_{STG}, T_J	-65 to +175	-65 to +175	-65 to +175	-65 to +175	°C

RHRG3070CC, RHRG3080CC, RHRG3090CC, RHRG30100CC

Electrical Specifications (per leg) $T_C = +25^{\circ}\text{C}$, Unless Otherwise Specified

SYMBOL	TEST CONDITION	RHRG3070CC			RHRG3080CC			RHRG3090CC			RHRG30100CC			UNITS
		MIN	TYP	MAX	MIN	TYP	MAX	MIN	TYP	MAX	MIN	TYP	MAX	
V_F	$I_F = 30\text{A}, T_C = +25^{\circ}\text{C}$	-	-	3.0	-	-	3.0	-	-	3.0	-	-	3.0	V
	$I_F = 30\text{A}, T_C = +150^{\circ}\text{C}$	-	-	2.5	-	-	2.5	-	-	2.5	-	-	2.5	V
I_R	$V_R = 700\text{V}, T_C = +25^{\circ}\text{C}$	-	-	500	-	-	-	-	-	-	-	-	-	μA
	$V_R = 800\text{V}, T_C = +25^{\circ}\text{C}$	-	-	-	-	-	500	-	-	-	-	-	-	μA
	$V_R = 900\text{V}, T_C = +25^{\circ}\text{C}$	-	-	-	-	-	-	-	-	500	-	-	-	μA
	$V_R = 1000\text{V}, T_C = +25^{\circ}\text{C}$	-	-	-	-	-	-	-	-	-	-	-	500	μA
I_R	$V_R = 700\text{V}, T_C = +150^{\circ}\text{C}$	-	-	1.0	-	-	-	-	-	-	-	-	-	mA
	$V_R = 800\text{V}, T_C = +150^{\circ}\text{C}$	-	-	-	-	-	1.0	-	-	-	-	-	-	mA
	$V_R = 900\text{V}, T_C = +150^{\circ}\text{C}$	-	-	-	-	-	-	-	-	1.0	-	-	-	mA
	$V_R = 1000\text{V}, T_C = +150^{\circ}\text{C}$	-	-	-	-	-	-	-	-	-	-	-	1.0	mA
t_{RR}	$I_F = 1\text{A}, dI_F/dt = 100\text{A}/\mu\text{s}$	-	-	65	-	-	65	-	-	65	-	-	65	ns
	$I_F = 30\text{A}, dI_F/dt = 100\text{A}/\mu\text{s}$	-	-	75	-	-	75	-	-	75	-	-	75	ns
t_A	$I_F = 30\text{A}, dI_F/dt = 100\text{A}/\mu\text{s}$	-	35	-	-	35	-	-	35	-	-	35	-	ns
t_B	$I_F = 30\text{A}, dI_F/dt = 100\text{A}/\mu\text{s}$	-	33	-	-	33	-	-	33	-	-	33	-	ns
Q_{RR}	$I_F = 30\text{A}, dI_F/dt = 100\text{A}/\mu\text{s}$	-	200	-	-	200	-	-	200	-	-	200	-	nC
C_J	$V_R = 10\text{V}, I_F = 0\text{A}$	-	100	-	-	100	-	-	100	-	-	100	-	pF
$R_{\theta JC}$		-	-	1.2	-	-	1.2	-	-	1.2	-	-	1.2	$^{\circ}\text{C}/\text{W}$

DEFINITIONS

V_F = Instantaneous forward voltage (pw = 300 μs , D = 2%).

I_R = Instantaneous reverse current.

t_{RR} = Reverse recovery time (Figure 2), summation of $t_A + t_B$.

t_A = Time to reach peak reverse current (See Figure 2).

t_B = Time from peak I_{RM} to projected zero crossing of I_{RM} based on a straight line from peak I_{RM} through 25% of I_{RM} (see Figure 2).

Q_{RR} = Reverse recovery charge.

C_J = Junction Capacitance.

$R_{\theta JC}$ = Thermal resistance junction to case.

E_{AVL} = Controlled avalanche energy. (See Figures 10 and 11).

pw = pulse width.

D = duty cycle.

V_1 AMPLITUDE CONTROLS I_F
 V_2 AMPLITUDE CONTROLS dI_F/dt
 L_1 = SELF INDUCTANCE OF
 $R_4 + L_{\text{LOOP}}$

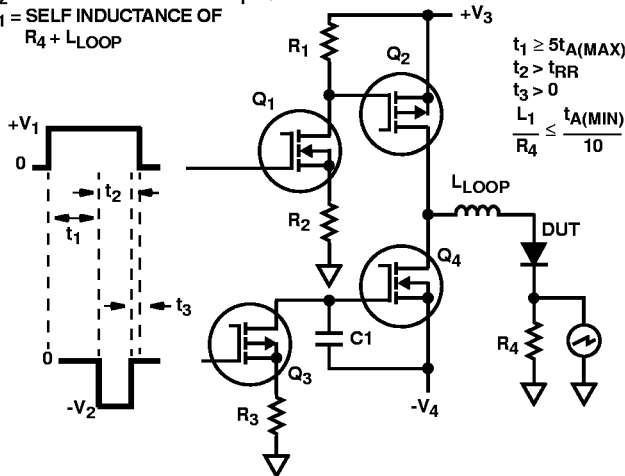


FIGURE 1. t_{RR} TEST CIRCUIT

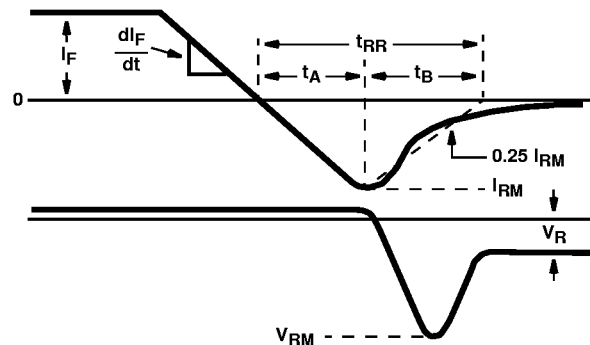


FIGURE 2. t_{RR} WAVEFORMS AND DEFINITIONS

Typical Performance Curves

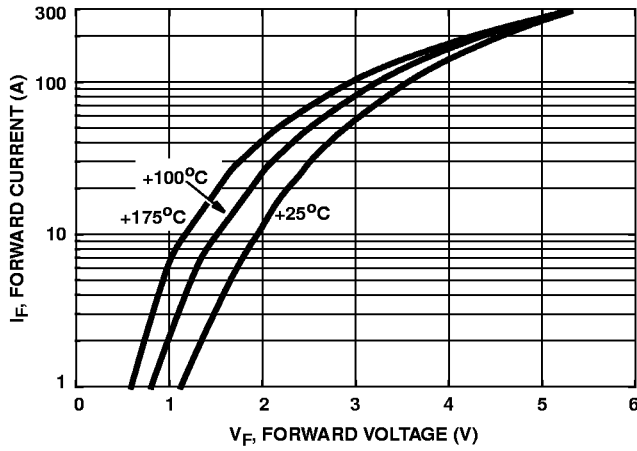


FIGURE 3. TYPICAL FORWARD CURRENT vs FORWARD VOLTAGE DROP

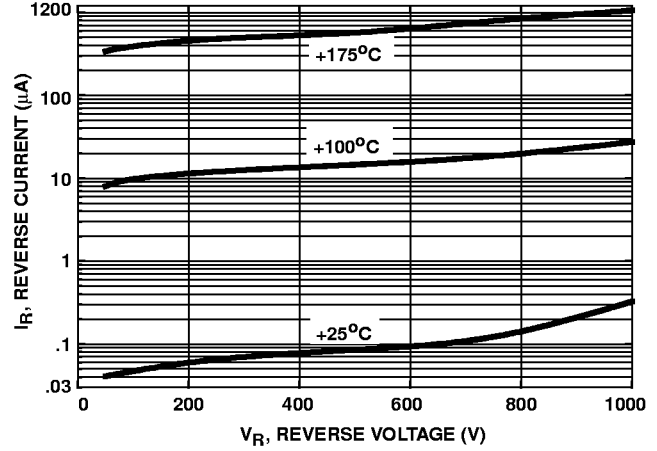


FIGURE 4. TYPICAL REVERSE CURRENT vs REVERSE VOLTAGE

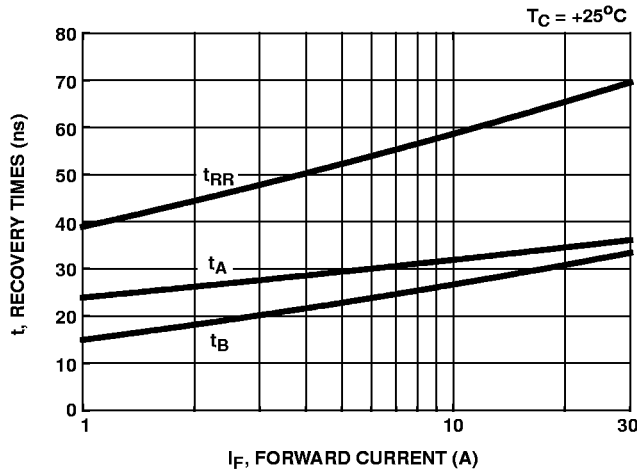


FIGURE 5. TYPICAL t_{RR} , t_A AND t_B CURVES vs FORWARD CURRENT AT +25°C

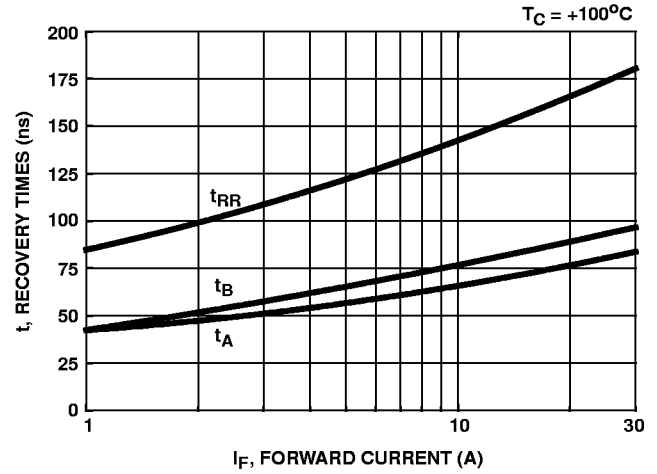


FIGURE 6. TYPICAL t_{RR} , t_A AND t_B CURVES vs FORWARD CURRENT AT +100°C

Typical Performance Curves (Continued)

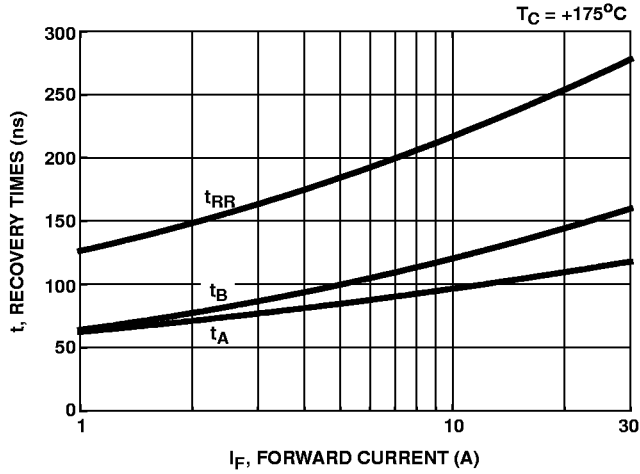


FIGURE 7. TYPICAL t_{RR} , t_A AND t_B CURVES vs FORWARD CURRENT AT $+175^\circ\text{C}$

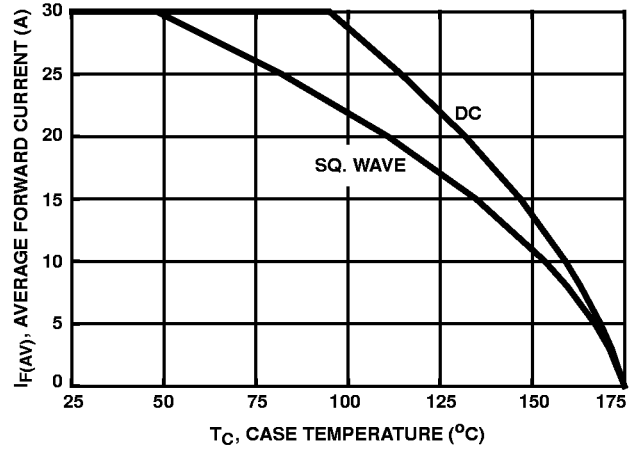


FIGURE 8. CURRENT DERATING CURVE FOR ALL TYPES

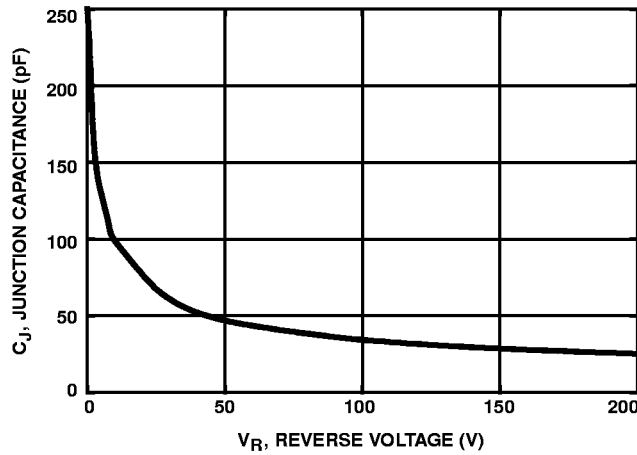


FIGURE 9. TYPICAL JUNCTION CAPACITANCE vs REVERSE VOLTAGE

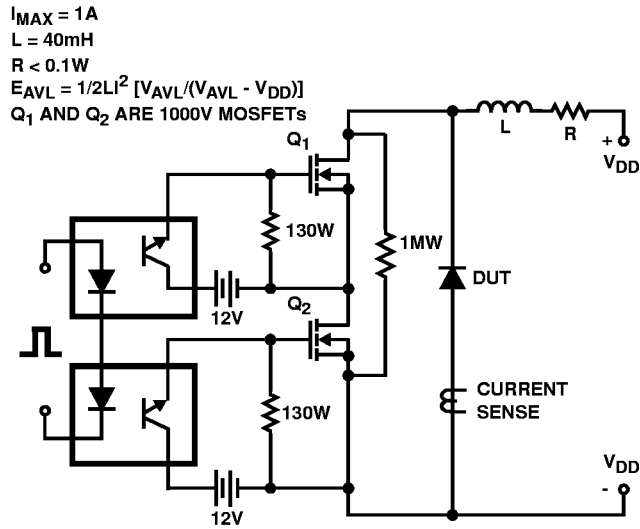


FIGURE 10. AVALANCHE ENERGY TEST CIRCUIT

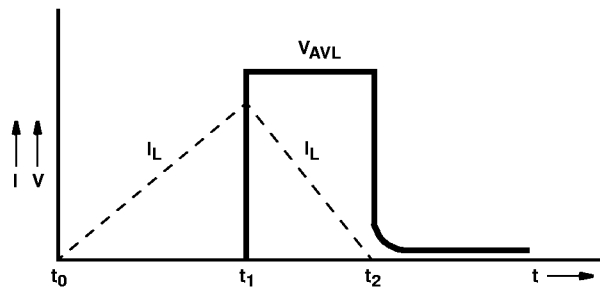


FIGURE 11. AVALANCHE CURRENT AND VOLTAGE WAVEFORMS