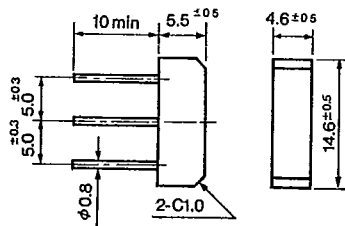


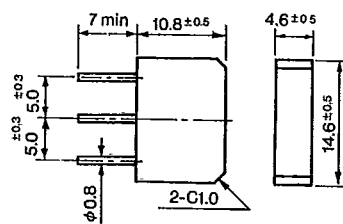
MI/RBA/RBV

Rating/ Characteristics	Absolute Maximum Ratings				Electrical Characteristics (Ta=25°C)				Others																					
	V _{RSM} (V)	I _o (A)	I _{FSM} (A)	T _j (°C)	T _{stg} (°C)	V _F (V)	I _R (μA)	I _{R(H)} (μA)	Outline Drawing	Weight(g)	Taping	Internal Connections																		
Type No.			50Hz Half Sine Wave Single Pulse			Max. per chip	I _F (A)	V _R =V _{RM} Max. per chip	V _R =V _{RM} Max. per chip																					
MI-101	100	1.0				0.95	0.5					Center Tap <table border="1"> <tr><th>Type</th><th>Internal Connections</th></tr> <tr><td>MI-101</td><td></td></tr> <tr><td>MI-102</td><td></td></tr> <tr><td>MI-104</td><td></td></tr> <tr><td>MI-106</td><td></td></tr> <tr><td>MI-101R</td><td></td></tr> <tr><td>MI-102R</td><td></td></tr> <tr><td>MI-104R</td><td></td></tr> <tr><td>MI-106R</td><td></td></tr> </table>	Type	Internal Connections	MI-101		MI-102		MI-104		MI-106		MI-101R		MI-102R		MI-104R		MI-106R	
Type	Internal Connections																													
MI-101																														
MI-102																														
MI-104																														
MI-106																														
MI-101R																														
MI-102R																														
MI-104R																														
MI-106R																														
MI-101R	100																													
MI-102	200																													
MI-102R	200																													
MI-104	400																													
MI-104R	400																													
MI-106	600																													
MI-106R	600																													
MI-151	100	1.5	50	-40 ~ +130		0.95	1.0	5				Center Tap <table border="1"> <tr><th>Type</th><th>Internal Connections</th></tr> <tr><td>MI-151</td><td></td></tr> <tr><td>MI-152</td><td></td></tr> <tr><td>MI-154</td><td></td></tr> <tr><td>MI-156</td><td></td></tr> <tr><td>MI-151R</td><td></td></tr> <tr><td>MI-152R</td><td></td></tr> <tr><td>MI-154R</td><td></td></tr> <tr><td>MI-156R</td><td></td></tr> </table>	Type	Internal Connections	MI-151		MI-152		MI-154		MI-156		MI-151R		MI-152R		MI-154R		MI-156R	
Type	Internal Connections																													
MI-151																														
MI-152																														
MI-154																														
MI-156																														
MI-151R																														
MI-152R																														
MI-154R																														
MI-156R																														
MI-151R	100																													
MI-152	200																													
MI-152R	200																													
MI-154	400																													
MI-154R	400																													
MI-156	600																													
MI-156R	600																													
MI-151U	100	0.75 (per chip)										Voltage Doubler Type 																		
MI-152U	200																													
MI-154U	400																													
RBA-401	100	4.0	80			1.05	2.0	10	100			Center Tap <table border="1"> <tr><th>Type</th><th>Internal Connections</th></tr> <tr><td>MI-151</td><td></td></tr> <tr><td>MI-152</td><td></td></tr> <tr><td>MI-154</td><td></td></tr> <tr><td>MI-156</td><td></td></tr> <tr><td>MI-151R</td><td></td></tr> <tr><td>MI-152R</td><td></td></tr> <tr><td>MI-154R</td><td></td></tr> <tr><td>MI-156R</td><td></td></tr> </table>	Type	Internal Connections	MI-151		MI-152		MI-154		MI-156		MI-151R		MI-152R		MI-154R		MI-156R	
Type	Internal Connections																													
MI-151																														
MI-152																														
MI-154																														
MI-156																														
MI-151R																														
MI-152R																														
MI-154R																														
MI-156R																														
RBA-402	200																													
RBV-404	400																													
RBV-406	600																													
RBV-408	800	100				1.0	2.0	10	50			Voltage Doubler Type 																		
RBV-402L	200																													
RBV-406M	600	6.0	120	-40 ~ +150		0.92	3.0	250	1000			Voltage Doubler Type 																		
RBV-601	100	4.0				100								0.95	3.0	10	100													
RBV-602	200																													
RBV-604	400																													
RBV-606	600																													
RBV-608	800	6.0				100													Voltage Doubler Type 											
RBV-604	400																													
RBV-606	600																													
RBV-608	800																													

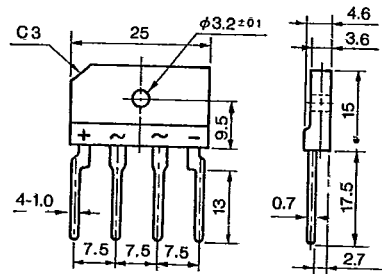
Outline Drawing ⑬



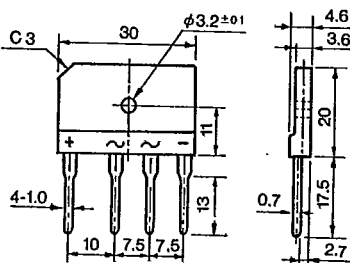
Outline Drawing ⑭



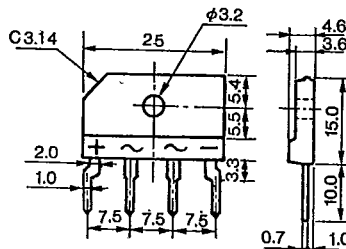
Outline Drawing ⑮

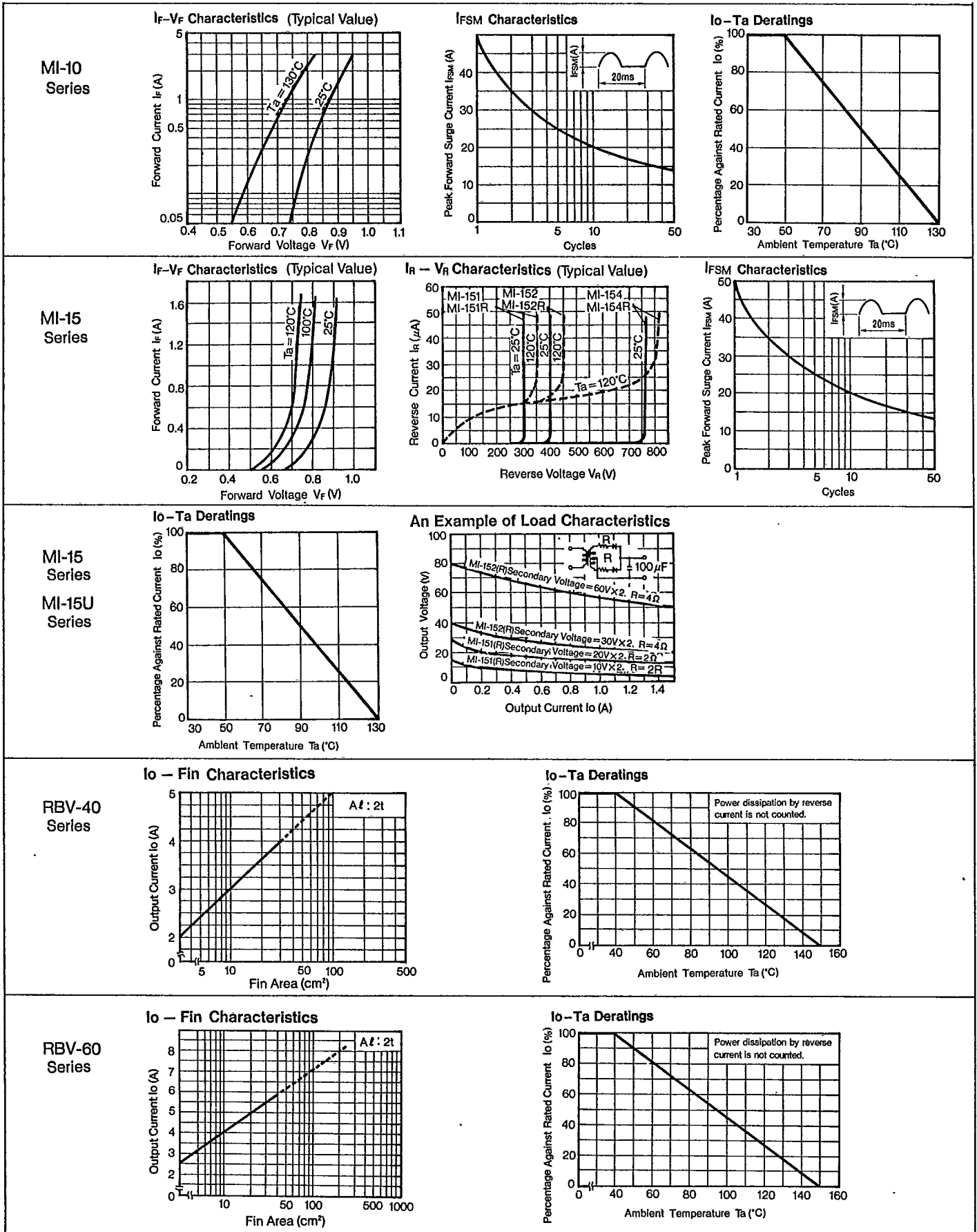


Outline Drawing ⑯



Outline Drawing ⑰



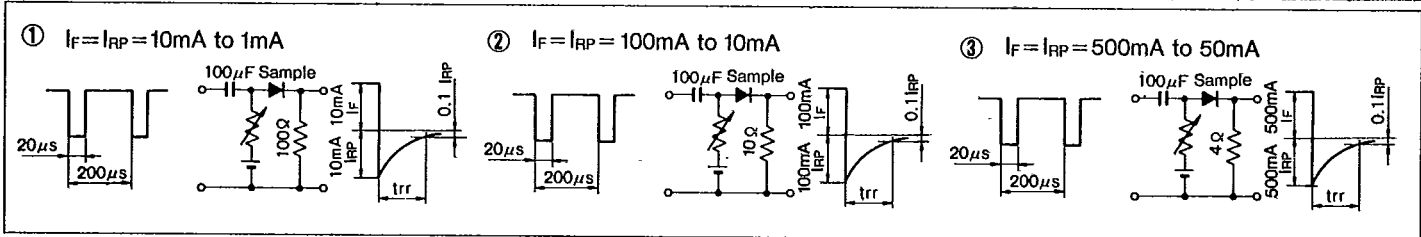


Symbols/trr Measurement Circuit

Symbols

V_{RSM}	Peak Reverse Surge Voltage	I_{RSM}	Peak Reverse Surge Current	T_{stg}	Storage Temperature
V_{RM}	Peak Reverse Voltage	I_R	Reverse Current	t_{rr}	Reverse Recovery Time
V_{P-P}	Reverse Voltage (Peak to Peak)	I_{RP}	Peak Reverse Current	C_t	Total Capacitance Between Terminals
V_R	Reverse Voltage	$I_{R(H)}$	Reverse Current (High Temperature)	$R_{th(j-c)}$	Thermal Resistance, Junction to Case
V_F	Forward Voltage	I_Z	Avalanche Current	r_z	Temperature Coefficient of Breakdown Voltage
V_B	Breakdown Voltage	I_{ZSM}	Allowable Avalanche Current	R_z	Equivalent Resistance of Breakdown Region
I_o	Average Rectified Forward Current	T_a	Ambient Temperature	$P_{F(AV)}$	Average Forward Power Dissipation
I_F	Forward Current	T_j	Junction Temperature	I^2_t	I^2_t limiting Value
$I_{F(AV)}$	Average Forward Current	T_{opr}	Operating Ambient Temperature		
I_{FSM}	Peak Forward Surge Current	T_c	Case Temperature		

Reverse Recovery Time Measurement Circuit



Taping Specifications

Excluding High Voltage Diodes

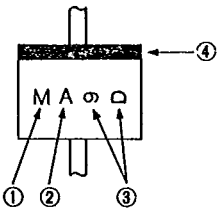
Designation	Dimension (in mm)	Packaging Dimension and Marking	Quantity
V Add Suffix [V] to Type No.	<p>Tape Carrier Method</p> <p>(1) Right side of taping direction is cathode. (2) Place electrode side down when casing. (3) Provide leader tape of 150~200mm at beginning of tape. (4) Provide space of more than 10 pitches each for beginning and end of tape.</p>	<p>Reel</p> <p>Marking of Type No., Lot No. and Quantity</p>	1,800 pcs per reel
V Add Suffix [V] to type No.	<p>Axial Taping</p>	<p>Reel</p> <p>Markings of Type No. Lot No. and Quantity</p>	5,000 pcs per reel (2.7 φ body) 3,000 pcs per reel (4.0 φ body)

Taping Specifications

Designation	Dimension (in mm)	Packaging Dimension and Marking	Quantity
V1 Add Suffix [V1] to Type No.	Axial Taping 	Ammunition Pack Broken Line: Perforation Markings of Type No, Lot No, and Quantity	2,000 pcs per box (2.7 φ body) 1,000 pcs per box (4.0 φ body)
VO Add Suffix [VO] to Type No.	Axial Taping 	Ammunition Pack Broken Line: Perforation Markings of Type No, Lot No, and Quantity	2,000 pcs per box (2.7 φ body) (2.4 φ body)
V3 Add Suffix [V3] to Type No.	Axial Taping 	Reel Markings of Type No, Lot No, and Quantity 	1,500 pcs per reel (5.2 φ body)
V4 Add Suffix [V4] to Type No.	Axial Taping 	Ammunition Pack Broken Line: Perforation Trade Mark Markings of Type No, Lot No, and Quantity	1,000 pcs per box (5.2 φ body)
W Add Suffix [W] to Type No.	Radial Taping 	Ammunition Pack Broken Line: Perforation Markings of Type No, Lot No, and Quantity	4,000 pcs per box (2.7 φ body) (0.6 φ lead)
WS Add Suffix [WS] to Type No.	Radial Taping (Applicable to AO Series) 	Ammunition Pack Markings of Type No, Lot No, and Quantity 	2,500 pcs per box (2.4 φ body)
WK Add Suffix [WK] to Type No.	Radial Taping (Applicable to AO Series) 		

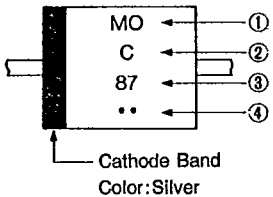
Marking Guide

1 Small TMD



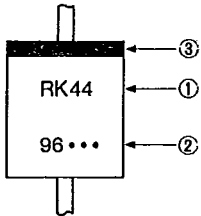
- ① Type Designation (in abbreviation)
AM01 is abbreviated as M.
- ② Class Designation
Z: 200V, No Letter: 400V, A: 600V
- ③ A: Year (Last Number of AD Year)
B: Month (Jan. to Sept. are represented by numbers 1 to 9 respectively, and Oct., Nov., and Dec. are abbreviated as O, N and D respectively)
- ④ Cathode Band: Successive Band, however AU02 Type is Non-Successive Band.

2 E/EO Type TMD



- ① Type Designation (in abbreviation)
EM01 is abbreviated as MO, EM2 is abbreviated as M2.
- ② Class Designation
Z: 200V, No Letter: 400V, A: 600V
B: 800 V, C: 1000V, F: 1500V
However, EU02A to be marked 2A, and EU2YX to be marked Y.
- ③ Abbreviations Representing Production Period
A: Year (Last Number of AD Year)
B: Month (1~9, O, N, D)
- ④ Production Period Divided in 3 ten day terms
• : 1st 10days •• : 2nd 10days ••• : 3rd 10days

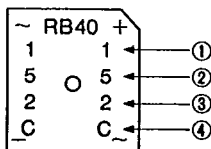
3 R Type TMD



- ① Type Designation: Mark in 2 sets
- ② Production Period: Mark in 4 sets
A: Year (Last Number of AD Year)
B: Month (1~9, O, N, D)
- ③ Production Period Divided in 3 ten day terms
• : 1st 10days •• : 2nd 10days ••• : 3rd 10days
- ④ Cathode Band Color: Silver: For Power Supply
Yellow: For Middle Speed
Red : For High Speed and Ultra-High Speed

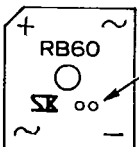
4 RB40/60

(RB40 Series)



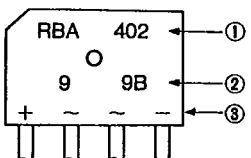
- ① Peak Reverse Voltage Designation
1, 2, 4, 6, C
Production Period
- ② Year (Last Number of AD Year)
- ③ Month (1~9, O, N, D)
- ④ Divided in 3 ten day terms
A: 1st 10days, B: 2nd 10days
C: 3rd 10days
Color Designation: Silver

(RB60 Series)



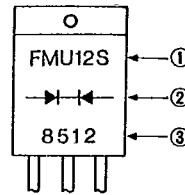
Dot Designation RB601 Violet
RB602 No Color
RB604 Blue
RB606 White

5 RBV/RBA



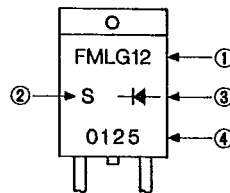
- ① Type Designation
- ② Lot Number
1st : Year (Last Number of AD Year)
2nd: Month (1~9, O, N, D)
3rd : Divided 1~3 ten day Terms
A: 1st 10 days B: 2nd 10 days
C: 3rd 10 days
- ③ In-Put Designation

6 TO220 Type (FM or CT Type)



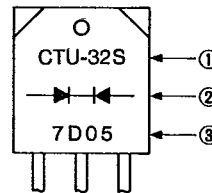
- ① Type Designation
Show FMU-12S as FMU12S.
- ② Polarity: Rectifier Symbols
- ③ Lot Number (Laser Marking)
1st : Year (Last Number of AD Year)
2nd : Month (0~9, O, N, D)
3rd, 4th: Day

7 TO220 Type (FM or CT Type, single chip)



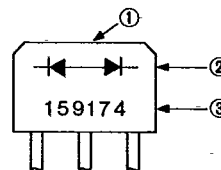
- ① Type Designation: Omit Last Letter
Show FML-G12S as FMLG12.
- ② Last Letter of Type Designation
- ③ Polarity: Rectifier Symbols
- ④ Lot Number (Laser Marking)
1st : Year (Last Number of AD Year)
2nd : Month (0~9, O, N, D)
3rd, 4th: Day

8 TO3P Type (FM or CT Type)



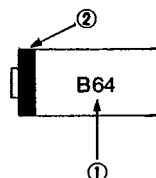
- ① Type shown in full designation
However, CTB-34/34S/34M are marked as CTB-34, CTU-G3DR is marked as CTUG3DR.
- ② Polarity: Rectifier Symbols
- ③ Lot Number:
1) M, U, G and L Types
First Number : Last Digit of AD Year
Second Number : Month
Third and Fourth Numbers: Day
Fifth Number : None
2) For types CTB-34/34S/34M, the fifth letter shows type designation. If no fifth number, the type is CTB-33 or CTB-34.
- 3) Marking Color: Silver

9 MI-10/15 Type



- ① MI-10/15 is die-stamped on the top of the case.
- ② Rectifier Symbols
- ③ Lot Number:
First Number : Peak Reverse Voltage:
(Letter) 0=50V, 1=100V, 2=200V,
4=400V, 6=600V, C=1000V
Second Number : Last Digit of AD Year
Third Number : Month
Fourth and Fifth Numbers: Day
Sixth Number : Production number and
U: Voltage Doubler Type

10 SFP Type



- ① Type Designation:
SFPB-64 is abbreviated at B64,
- ② Cathode Band