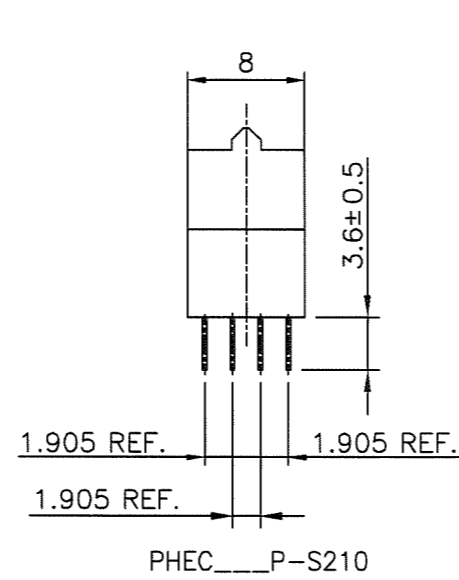
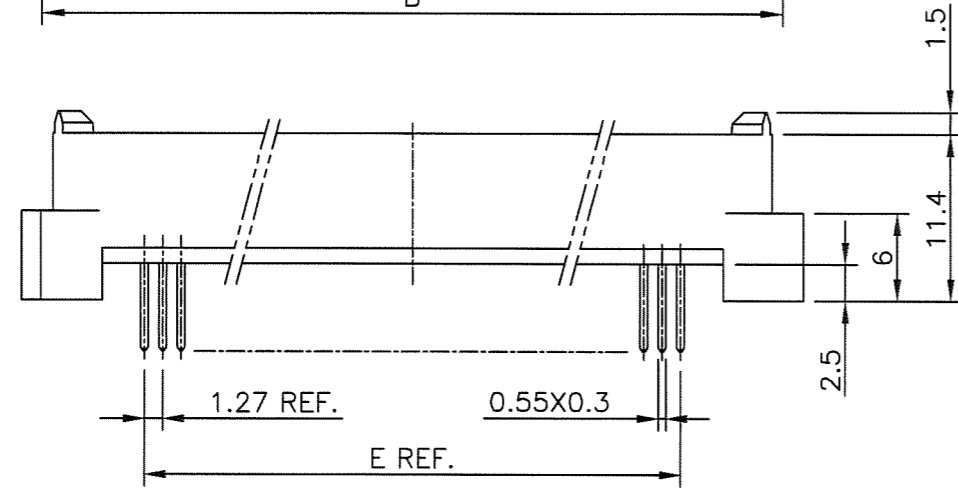
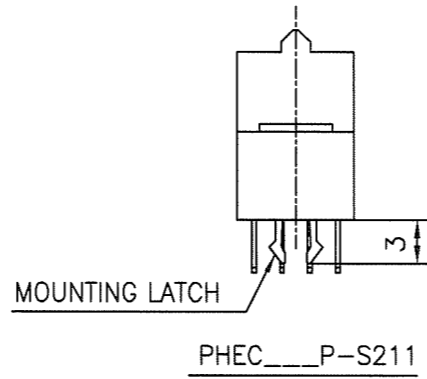
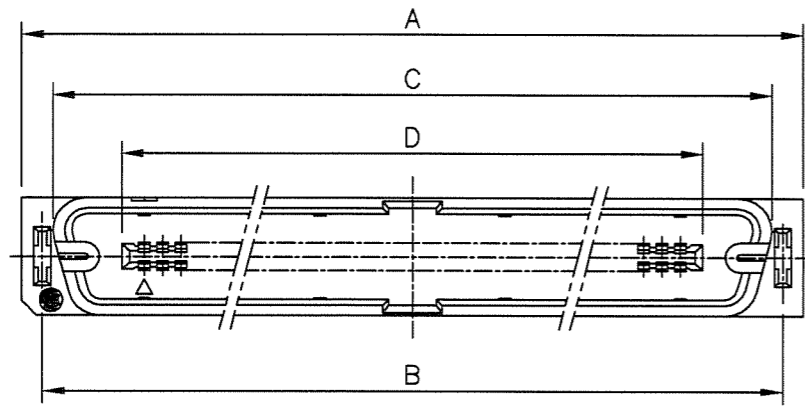
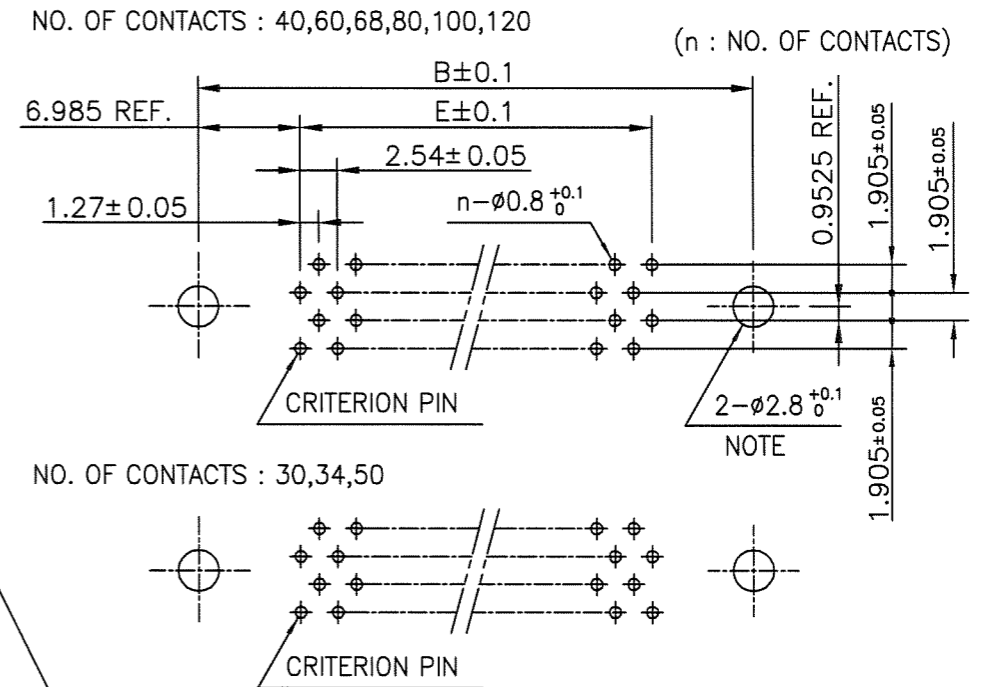


PRODUCT NO.

JSC 90735

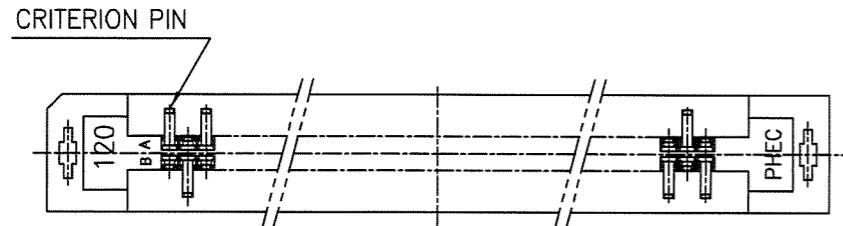


RECOMMENDED PC BOARD  
THICKNESS: 1.6 ± 0.2  
HOLE PATTERN (COMPONENT SIDE)

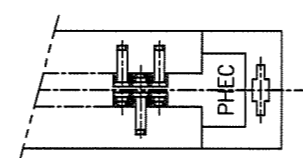


NOTE : THROUGH-HOLES FOR MOUNTING LATCHES ALSO SHOULD BE PLATED

NO. OF CONTACTS : 40,60,68,80,100,120



NO. OF CONTACTS : 30,34,50



CAT. NO.	NO. OF CONTACTS (MATING SIDE)	DIMENSIONS				
		A	B	C	D	E
PHEC30P-S21_	15/ROW X 2 ROWS	34.55	31.75	30.30	20.42	17.78
PHEC34P-S21_	17/ROW X 2 ROWS	37.09	34.29	32.84	22.96	20.32
PHEC40P-S21_	20/ROW X 2 ROWS	40.90	38.10	36.65	26.77	24.13
PHEC50P-S21_	25/ROW X 2 ROWS	47.25	44.45	43.00	33.12	30.48
PHEC60P-S21_	30/ROW X 2 ROWS	53.60	50.80	49.35	39.47	36.83
PHEC68P-S21_	34/ROW X 2 ROWS	58.68	55.88	54.43	44.55	41.91
PHEC80P-S21_	40/ROW X 2 ROWS	66.30	63.50	62.05	52.17	49.53
PHEC100P-S21_	50/ROW X 2 ROWS	79.00	76.20	74.75	64.87	62.23
PHEC120P-S21_	60/ROW X 2 ROWS	91.70	88.90	87.45	77.57	74.93

MATERIAL

INSULATOR : NYLON RESIN GLASS REINFORCED (UL94V-0)  
COLOR : BLACK

CONTACT : COPPER ALLOY

MOUNTING LATCH : PHOSPHOR BRONZE  
SOLDER PLATED

CONTACT PLATING TABLE  
[THICKNESS: μm]

CONTACT AREA	REMAINDER
GOLD 0.25 MIN. OVER NICKEL 3.2	SOLDER OVER NICKEL

mat'l. code				surface ISO 1302		tolerance ISO 406 ISO 1101		projection		product family PHEC		CODE JP	
description				angles		linear		MM		title			
AA REVISED J04-0358 H.T 10/13/04				0°±2'		0.X ±0.3				PRINTED CIRCUIT CONNECTOR (CAT.NO.PHEC _ _ _ P-S21_)			
AB REVISED J07-0047 S.O 1/25/07						0.XX ±0.3				dwg no sheet 1 of 1 size			
				dr M.OBA		1/25/07		FCJ		JSC 90735 A3			
				enr S.OKUDAIRA		1/25/07				type Customer Drawing			
				chr R. Shoyji		1/25/07				Rev. AB			
				appd S. Sudan		1/25/07							
sheet index		revision sheet		AB		1							

FCIconnect.com

Copyright FCI.